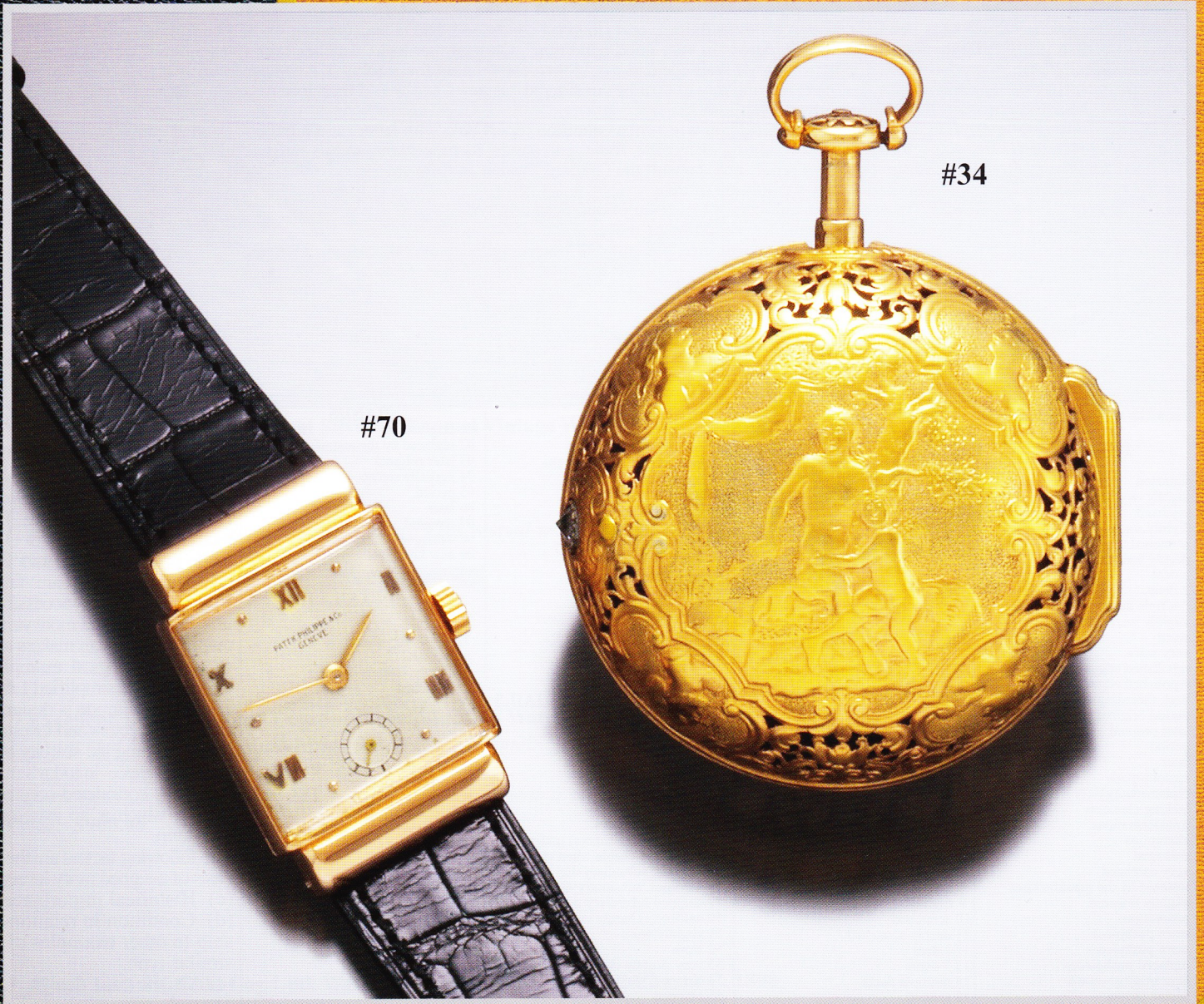


ASHLAND

A Catalog of Fine and Important Watches



#70

#34

Call Toll Free
1-800-424-5353

or call
1-941-957-3760

FAX
1-941-365-4931

SUITE 200, 640 SOUTH WASHINGTON BLVD. • SARASOTA, FL 34236-7137



ASHLAND

1-800-424-5353
OR
1-941-957-3760
FAX
1-941-365-4931

- A. Due to rapid sales, ordering by phone is recommended. Please ask for RICK GILBERT or JIM MILLER at
B. Please make checks or money orders payable to: ASHLAND.
We also accept Visa, MasterCard and American Express
C. ASHLAND offers a full seven (7) day return privilege on items improperly described.
D. Orders can be held for 45 days with a 20% non-refundable deposit.
E. Office Hours are 9 a.m. to 5 p.m., Monday through Friday.

Send all checks to: ASHLAND, Suite 200, 640 South Washington Blvd., Sarasota, FL 34236-7137; All Foreign orders should be paid by Bank Wire Transfer; Northern Trust Bank of Florida; ABA #066009650; Checking Account Number 718936; Credit to ASHLAND INVESTMENT

ASHLAND GRADING SYSTEM GUIDE

The lots described in this catalog have been carefully examined and valued by Ashland's experts and watch makers, taking into consideration the aesthetical, historical and technical interest, age and rarity, as well as the technology available at the time of production of each timepiece.

For such judgment to be as objective as possible, it must rest on a number of criteria, particularly with regards to the age of a lot. Indeed, a wrist watch of less than 50 years old cannot be judged with the same criteria as a Renaissance watch. This is the reason why some of the gradings will only qualify for certain types of watches and will never be used for others.

For example, if, as a general rule, watches can be attributed gradings from 1 to 4 for the case, the dial and the movement, watches of less than 100 years old can be given grading 1 (as new), 3 (in very good condition), or 4 (in good condition). The latter, (grading 4), will be followed by one or more grading numbers to justify why the lot cannot be considered "in very good condition". On the other hand, watches over 100 years old, of similar condition, would indeed be considered as "very good" because of their age and would therefore qualify for grading 3. Needless to say, watches over 100 years old, even the best state of conservation for their age, are unlikely to ever be considered "as new" and would therefore never be eligible for grading 1; for this reason, we have introduced grading 2 (in perfect condition).

At the end of each lot description, before the description, you will find a condition report box, with letters and numbers, divided into 4 sections: these are the grades given to the lot with reference to the condition of its case, its dial and hands, its movement, and its rarity level-if applicable.

To understand the grades shown in the condition report box, consult the Grading System as follows:

C for the case, followed by one or more numbers = condition of case.

D for the dial (& hands), followed by one or more numbers = condition of dial & hands.

M for the movement, followed by one or more numbers = condition of movement.

Next to this condition report box, is an experts rarity box featuring one number from 1-10 as an overall rarity grade.

See example below:

C 1	D 1-01	M 1	R 4
------------	---------------	------------	------------

Case: as new Dial: as new - original hands Movement: as new Rarity Grade

GUIDE TO GRADING

1 : as new	2 : in perfect condition	3 : very good	4 : good	5 : fair
------------	--------------------------	---------------	----------	----------

C CASE	ENAMEL AND VARIOUS TYPES OF DECORATION	D DIAL (cont.)	HANDS	RARITY GRADE
DETAILS				
6 patinated	54 very worn	25 partly rubbed	01 original	A select group of watches in this catalog have been assigned a "rarity grade" which will appear in the description heading. The total production number of U. S. made pocket watches and vintage wrist watches are fairly well known and accessible, unlike the large and more varied output of European makers and of early horological examples. Therefore, this simplified 1 thru 10 numerical grade is designed to assist collectors and investors in determining the scarcity of a given timepiece in today's market (#1 is considered common to #10, which is an extremely rare item). The following factors are the basis of assigned rarity levels: (c) Historical importance. (d) Condition in relationship to other examples of similar type. (e) Artistic case design, I.e. enamel, unusual shape or form pieces. (f) Low survival rate of similar types. (g) Investment potential for increase in demand and price. A rarity grade will be assigned to highlight items which offer strong investment potential (generally items of level 5 thru 10).
7 slightly oxidized	55 very slightly chipped	26 very well reprinted by the manufacturer	02 replaced by the manufacturer	
8 oxidized	56 chipped	27 partially reprinted	03 later original	
9 slightly scratched	57 damaged	28 very well reprinted	04 partially replaced	
10 scratched	58 very damaged	29 well reprinted	05 period	
11 deeply scratched	59 slight restoration (hard enamel)	30 reprinted	06 later	
12 a dent	60 restored (hard enamel)	31 luminous reprinted	07 repaired	
13 2 dents	61 slight restoration (soft enamel)	32 alterations	08 damaged	
14 multiple dents	62 restored (soft enamel)	33 period, original	09 new luminous	
15 slightly worn	63 period original	34 later original		
16 worn	64 later original	35 period	M MOVEMENT	
17 very worn	65 period	36 later	DETAILS	
18 repolished edges preserved	66 later	37 custom-made	6 patinated	
19 repolished edges altered	67 custom-made	38 to be restored	7 slightly oxidized	
20 back threading damaged	68 to be restored		8 oxidized	
21 period original	69 pearl missing	ENAMEL DIAL DETAILS	9 slightly scratched	
22 later original	70 pearls missing	39 slightly oxidized	10 scratched	
23 period	71 paste stone missing	40 slightly scratched	11 plating slightly deteriorated	
24 later	72 paste stones missing	41 scratched	12 plating deteriorated	
25 custom-made	73 precious stone missing	42 deeply scratched	13 rusted	
26 replacements	74 precious stones missing	43 hairline	14 a dent	
27 lacking elements	75 outer over glaze	44 two hairlines	15 dents	
28 transformations		45 multiple hairlines	16 replacements	
29 alterations	D DIAL	46 chips(s) or hairline(s) under bezel, not visible when closed	17 lacking elements	
30 damaged	METALLIC DIAL DETAILS	47 hairline, subsidiary dial	18 later escapement	
31 very damaged	6 patinated	48 hairlines, subsidiary dial	19 upgraded	
32 restored by the manufacturer	7 slightly oxidized	49 chipped subsidiary dial	20 later balance	
33 slightly restored	8 oxidized	50 hairline(s) barely visible	21 transformations	
34 restorations	9 slightly scratched	51 slightly worn	22 alterations	
35 worn pushpiece	10 scratched	52 worn	23 damaged	
36 worn pushpieces	11 deeply scratched	53 very slightly chipped	24 very damaged	
37 replaced pushpieces	12 a dent	54 chipped, winding aperture	25 restored by the manufacturer	
38 later original crown	13 2 dents	55 chipped	26 slightly restored	
39 period crown	14 multiple dents	56 damaged	27 restorations	
40 to be restored	15 spotted	57 slightly restored	28 inscription rubbed	
41 partially re-gilt	16 slightly worn	58 restored by the manufacturer	29 re-rhodiumed	
42 re-gilt	17 worn	59 restorations	30 re-gilt	
43 bow replaced	18 very worn	60 soft overglazed	31 period, original	
44 hinge worn	19 damaged	61 partly rubbed	32 later original	
45 hinge restored	20 refreshed	62 alterations	33 period	
46 renumbered	21 soft over glazed	63 period, original	34 later	
47 hairline	22 slightly restored	64 later original	35 custom-made	
48 2 hairlines	23 restored by the manufacturer	65 period	36 to be overhauled	
49 multiple hairlines	24 restorations	66 later	37 to be restored	
50 slightly scratched		67 custom-made	- a. cleaned	
51 scratched		68 to be restored	- b. minor	
52 slightly worn			- c. major	
53 worn			- d. broken staff	
			* overhaul recommended (at buyer's expense)	
			** overhaul required (at buyer's expense)	



1. Outstanding Egyptian Revival Silver & Enamel Vintage Watch Key

European; C. 1920s

CASE: 3-1/2" long, green/blue/silver.

C 3	R 8
-----	-----

Experts Opinion: A wonderful and very rare 1920s revival watch key!

Price: \$650.00

2. Excellent 14K Gold 32nd Degree Masonic Folding Watch Charm

25 Point (1/4 Carat) Diamond, red/black and white enamel.

C 3	R 7
-----	-----

Experts Opinion: 11.2 dwts. of 14K gold fully enameled with a very clean diamond. A rare find in this gold market, three hinged levels!

Price: \$900.00

3. 13-1/2 Inch 9K Gold Log Link Watch Chain with Double Sided Charm C. 1890

Two-sided charm - blood stone & sardonyx.

C 3	R 7-1/2
-----	---------

Experts Opinion: 31.25 dwts. (TW) large long link chain. Sadly, most have been melted, this one escaped the smelter!

Price: \$1,525.00

4. Very High Relief Cutaway See Through Silver Lady's Pocket Watch

Swiss; Lady's; C. 1890

CASE: 0 Size, open face, .800 silver, yellow/white, repousse and cutaway decorations.

DIAL: Off-white, fancy, porcelain, Roman numerals, filigree hands.

MOVT: 15 Jewel, pin-set, cylinder escapement, gilt, bridge style, unsigned.

C 3	D 3	M 3	R 7-1/2
-----	-----	-----	---------

Experts Opinion: Gold engraved dust cover is seen through the exceptionally high relief back (cutaway) lid. Unique & special!

Price: \$550.00

5. Lovely 18K Enamel (Guilloche) Lady's Watch with Diamond & Rare Matching 18K Gold Enamel Chain

Swiss; Lady's; C. 1910

CASE: No. 909987, 0 size, open-face, 18K, rose-gold, floral/geometric/enamel decorations. Sweet pattern under purple and white floral trim!

DIAL: Gold, textured, metal, Arabic numerals, spade hands.

MOVT: 16 Jewel, stem-set, lever escapement, nickel, bridge style.

C 3	D 2	M 2	R 7
-----	-----	-----	-----

Experts Opinion: 17" 18K enamel chain. The 17" chain separates this amazing timepiece into a rare category.

Price: \$2,550.00

6. Scarce Miniature Silver Purse Watch (pops open for time)

Hoffers (Swiss); Unisex; Serial # 10870; C. 1926

CASE: No. 56, miniature, 33x 22mm, hunter case, .800 silver, white, machined decorations.

DIAL: Off-white, metal, Arabic numerals, spade hands, Cartier signed (later added).

MOVT: 15 Jewel, stem-set, lever escapement, nickel, bridge style, signed.

C 3	D 3	M 3	R 7
-----	-----	-----	-----

Experts Opinion: Radium treated hand and numerals, on this scarce miniature purse watch. Quite a find!

Price: \$400.00

7. Mint & Rare Niello Floral & Rose-Gold 12 Size Gent's Hunter Case Pocket Watch

Record (Swiss); Man's; C. 1890

CASE: No. 67556, 12 size, hunter case, sterling silver, rose/black, floral and enamel decorations.

DIAL: White porcelain/double sunk, Arabic numerals, spade hands.

MOVT: 15 Jewel, stem-set, lever escapement, nickel, 3/4-plate, signed.

C 2	D 2	M 2	R 8
-----	-----	-----	-----

Experts Opinion: Mint Niellos are very rare and unusually beautiful. This one is no exception!

Price: \$500.00

8. 12 Size Hunter Case P. H. Doret Silver Scenic Niello Pocket Watch of A Dog & Hunter In Search Of Prey

Doret (Swiss); Man's; C. 1890

CASE: 12 Size, hunter case, .800 silver, white/rose/black & silver, enamel decorations.

DIAL: White porcelain/double sunk, Arabic numerals, filigree hands, signed "P. H. Doret."

MOVT: 10 Jewel, lever-set, cylinder escapement, gilt, bridge style, unsigned.

C 3	D 3	M 2	R 8
-----	-----	-----	-----

Experts Opinion: Very nice scene of a hunter and dog in search of prey. Scarce watch intricately carved prior to adding niello.

Price: \$875.00

9. 16 Size Moonphase Full Calendar Open Face Man's Pocket Watch

Haslers & Fils (Swiss); Man's; C. 1890

CASE: 16 Size, open face, nickel, white, plain and signed "Haslers & Fils."

DIAL: Off-white, metal, Arabic numerals, filigree hands.

MOVT: 3 Jewels, pin-set, lever escapement, nickel, 3/4-plate, signed.

C 3	D 3-10	M 3	R 7-1/2
-----	--------	-----	---------

Experts Opinion: These have all but disappeared from the market place. A rare opportunity!

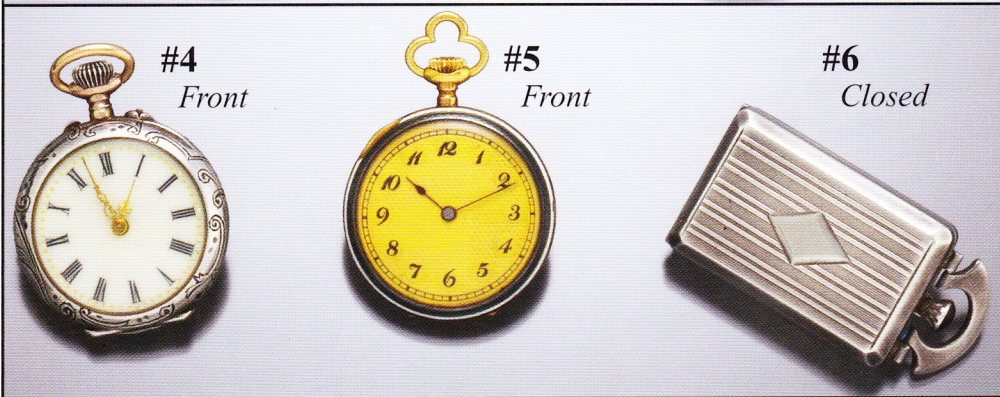
Price: \$775.00



#4
Back

#6

#5
with
chain



#4
Front

#5
Front

#6
Closed



#7

#8

#9

10. Unusual New England Padishah Duplex Pocket Watch with One of the Finest Train Engraved Cases*N. E. W. Co. (Conn.); Man's; C. 1905***CASE:** 16 Size, open face, base metal, white. Amazing railroad train scene!**DIAL:** White porcelain, Arabic numerals, spade hands, signed "New England."**MOVT:** 0 Size, stem-set, push-stem setting, duplex escapement, gilt, full plate, signed.

C 3	D 2	M 3	R 7
-----	-----	-----	-----

*Experts Opinion: Extraordinary detail shown on the reverse of this collectible timepiece!***Price: \$400.00****11. Exceptional Dan Patch New England Chronograph with a Gold-Filled Chain & a Solid Gold Dan Patch Charm***N. E. W. Co. (Conn.); Man's; Serial # 17662; C. 1912***CASE:** 16 Size, 48mm, open face, gold-filled, rose-gold, Dan Patch horse engraved.**DIAL:** White porcelain, Arabic numerals, spade hands, signed Dan Patch stop watch!

C 3	D 3-53	M 3	R 8
-----	--------	-----	-----

*Experts Opinion: A great example of a hard-to-locate watch. Includes a small gold-filled chain with a 14K gold Dan Patch charm with movable wheels. Super-duper!***Price: \$1,025.00****12. Remarkable 63mm 24 Size Leonidas Oversized Chronograph Pocket Watch with 30-Minute Register***Leonidas (Swiss); Man's; C. 1885***CASE:** Oversized 63mm, open face, nickel, white, plain.**DIAL:** Fancy white porcelain, Roman numerals, spade hands.**MOVT:** 16 Size, pin-set, lever escapement, gilt, 3/4-plate, signed.

C 3	D 3-53	M 2	R 8
-----	--------	-----	-----

*Experts Opinion: Wow, never had an oversized chronograph before and this is a beauty! A rare item with a three-color dial!***Price: \$1,025.00****13. Stupendous Unused & Extra-Rare Silver Embossed Cricket Alarm Pocket Watch***Cricket (Swiss); Man's; Serial # 1098; C. 1890***CASE:** No. 1098, 16 size, 48mm, open face, .800 silver, embossed Cricket scene with pierced case.**DIAL:** Fancy white porcelain, Roman numerals, original, unique style hands.**MOVT:** 16 Jewel, pin-set, lever escapement, gilt, 3/4-plate, unsigned.

C 2	D 2	M 2	R 8-1/2
-----	-----	-----	---------

*Experts Opinion: You will never see one as nice as this. Rare to find and impossible to locate in new condition! "Outstanding!"***Price: \$2,050.00****14. Heavy 18K 10 Size Waltham P. S. Bartlett Keywind/Keyset Hunter Case Pocket Watch with Key***Waltham (Mass.); Unisex; Serial # 266415; C. 1866***CASE:** No. 9384, 10 size, hunter case, 18K, yellow, floral/machined and geometric decorations, signed "W. P. & Co."**DIAL:** White porcelain, Roman numerals, Cathedral hands, signed "American Watch Co."**MOVT:** 13 Jewel, keyset, lever escapement, gilt, 3/4-plate, signed.

C 3	D 3-43	M 3-7	R 6
-----	--------	-------	-----

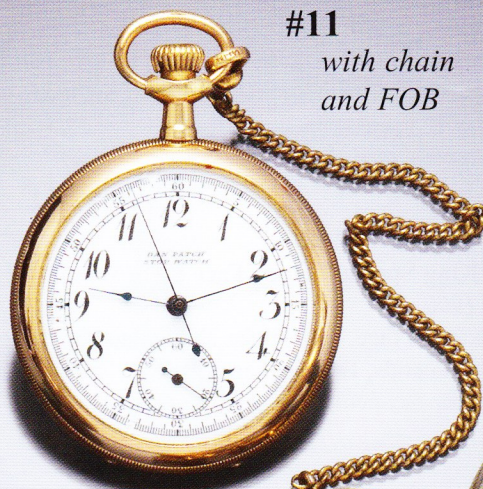
*Experts Opinion: Very heavy gold case, this is another watch that has escaped the melting pot. Preserve this jewel!***Price: \$1,600.00****15. Crisp 18K Lever Fusee 14-Size Swing-Out Fancy Gold Dial Pocket Watch with Key***L. H. Samuel & Co. (Liverpool, U.K.); Man's; Serial # 30164; C. 1850***CASE:** No. 30164, 14 size, 45mm, open face, swing-out, 18K yellow gold, machined/geometric decorations, signed "S. Hoyt, New York."**DIAL:** Gold, fancy, engraved lakeside scene, gold, Roman numerals, Breguet hands.**MOVT:** Keyset, No. 30164, lever escapement, gilt, full plate, signed.

C 2	D 3	M 2	R 7-1/2
-----	-----	-----	---------

*Experts Opinion: Plenty of gold in this treasure - just put it away and watch it climb!***Price: \$1,525.00**



#11
Back



#11
with chain
and FOB



#10
Back



#12



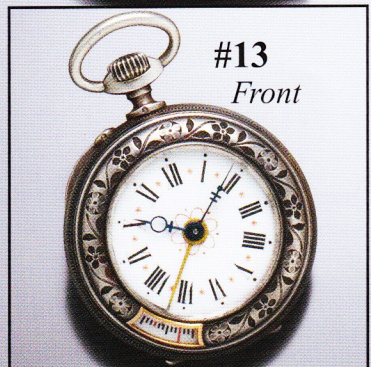
#13
Back



#15



#14



#13
Front



#15
Mov't

16. Very Rare – Perfect Fancy Porcelain Dial 18-Size Gold-Filled Hunter Case American Waltham Pocket Watch

Waltham (Mass.); Man's; Serial # 8410517; C. 1898

CASE: No. 761492, 18 size, hunter case, gold-filled, yellow, floral/machined/barleycorn decorations, signed "Essex 20 Year."

DIAL: White/gold/silver/black/blue, fancy, porcelain dial, Arabic numerals, filigree hands, signed "American Waltham."

MOVT: 15 Jewel, lever-set, No. 8410517, lever escapement, nickel, 3/4-plate, signed.

C 2	D 2	M 3	R 8
-----	-----	-----	-----

Experts Opinion: Superb dial makes this extremely rare. An exceptionally fancy dial!

Price: \$825.00

17. An Admiral 6 Oz. Coin Silver Illinois "King Special" Open Face Stem Wind Pocket Watch

Illinois (U. S.); Man's; Serial #1427466; C. 1900

CASE: No. P2586, 18 size, oversized, 61mm, open face, coin silver, shield decorations, signed "Fahys Coin."

DIAL: White porcelain/double sunk, Roman numerals, Breguet hands, signed "King Special."

MOVT: 17 Jewel, lever-set, No. 14217466, lever escapement, nickel, 3/4-plate, signed.

C 3	D 2	M 2	R 7
-----	-----	-----	-----

Experts Opinion: These massive cased watches are very rare, usually found in key winds. This is a superb example of a very collectible timepiece!

Price: \$1,025.00

18. 14K 12 Size Illinois 21 Jewel 5-Color Gold Multi Hunter Case Pocket Watch

Illinois (U. S.); Unisex; Serial # 2281634; C. 1910

CASE: No. 382244, 12 size, hunter case, 14K, multi-color, floral/geometric/bird decorations, signed "Solidarity."

DIAL: White porcelain/double sunk, Arabic numerals, spade hands, signed "Illinois Watch Co."

MOVT: 21 Jewel, stem-set, No. 2281634, lever escapement, nickel, bridge style, signed.

C 2	D 2	M 2	R 7-1/2
-----	-----	-----	---------

Experts Opinion: Wonderful in every respect – nice heavy gold case. T. W. 41.7 dwts. or 64.84 gr.

Price: \$2,325.00

19. 17 Jewel Waltham 16 Size Multi-Gold Hunter Case Pocket Watch

Waltham (Mass.); Man's; Serial # 13404226; C. 1903

CASE: No. 74880, 16 size, hunter case, 14K, multi-color, floral/barleycorn/geometric decorations, signed "Leon W. C. Co."

DIAL: White porcelain/double sunk, Roman numerals, spade hands, signed "Waltham."

MOVT: 17 Jewel, stem-set, No. 13,404,226, lever escapement, nickel, bridge style, signed.

C 3-15	D 3	M 3	R 6-1/2
--------	-----	-----	---------

Experts Opinion: .05 Ct. diameter located in the center back lid. Heavy cased 54 dwts. 84 gr. watch – a great buy!

Price: \$1,900.00

20. 18 Size Massive 14K Rockford Hunter Case Pocket Watch with Front Lid Multi-Gold Design

Rockford (Illinois); Man's; Serial # 286512; C. 1886

CASE: No. 130283, 18 size, hunter case, 14K, rose/multi-color, floral and barleycorn decorations, signed "C. W. Mfg. Co."

DIAL: White porcelain, single sun, Roman numerals, spade hands, signed "Rockford."

MOVT: 15 Jewel, lever-set, No. 286512, lever escapement, nickel, 3/4-plate, signed.

C 3	D 2	M 3	R 7
-----	-----	-----	-----

Experts Opinion: 92.7 dwts. 144 gr. (T. W.) states plenty of gold here! Front lid is multi-gold trimmed. A virtual bargain with a good upside!

Price: \$3,300.00

21. Scarce Hampden 23 Jewel 16 Size Special Railway Gent's Pocket Watch

Hampden (Ohio); Man's; Serial # 3327601; C. 1917

CASE: No. 1181762, 16 size, open-face, gold-filled, rose, plain/geometric decorations, signed "Dueber."

DIAL: White porcelain/single sunk, Arabic numerals, spade hands, signed "Dueber Hampden."

MOVT: 23 Jewel, lever-set, No. 3327601, 5 adjustments, lever escapement, nickel, bridge style, signed.

C 3-9	D 3-44	M 3	R 6-1/2
-------	--------	-----	---------

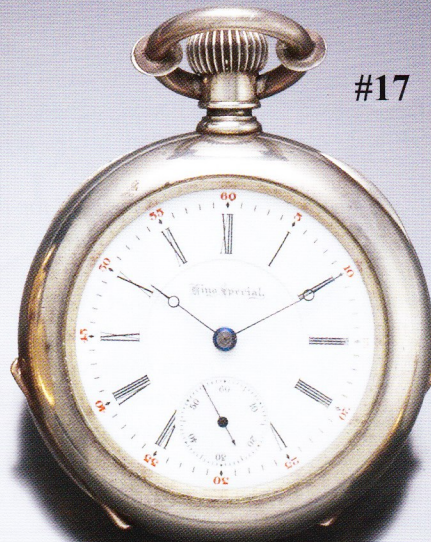
Experts Opinion: Unusual to find this model. A scarce railroad watch, by a fine company! Inside cover with mars.

Price: \$625.00

#16



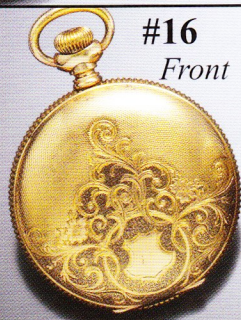
#17



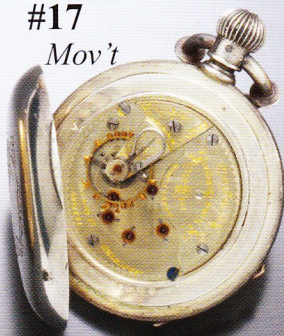
#18



#16
Front



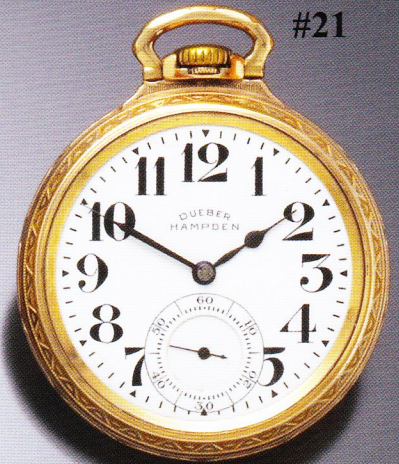
#17
Mov't



#20
Front



#21



#19



#20
Back



#21
Mov't



22. Rare 23 Jewel Illinois Sangamo Special Railroad Pocket Watch in a Sangamo Special Signed Case

Illinois (U. S.); Man's; Serial # 3862389; C. 1921

CASE: No. 8520458, 16 size, open-face, gold-filled, rose, plain/barleycorn decorations, signed "Sangamo Special Wadsworth.

DIAL: White porcelain/double sunk, Arabic numerals, spade hands, signed "Illinois."

MOVT: 23 Jewel, lever-set, No. 3862389, lever escapement, nickel, bridge style, signed.

C 3	D 3	M 3	R 7
-----	-----	-----	-----

Experts Opinion: A rare railroad, highly sought by many. Great potential for the next generation!

Price: \$1,025.00

23. Extremely Rare 16-Size 23 Jewel Illinois Ball Railroad Pocket Watch

Ball (Illinois); Man's; Serial # B803189; C. 1931

CASE: No. 9767339, 16 size, open face, gold-filled, rose, plain/barleycorn decorations, signed "Ball Official R R Standard J. Boss."

DIAL: White porcelain/single sunk, Arabic numerals, spade hands, signed "Ball Official R R Standard, Cleveland."

MOVT: 23 Jewel, lever-set, No. B803189, lever escapement, nickel, 3/4-plate, signed.

C 3	D 3	M 3	R 8-1/2
-----	-----	-----	---------

Experts Opinion: Not many 23 jewel Illinois Ball's exist – this is a very clean and rare watch!

Price: \$4,050.00

24. Truly Amazing 24 Jewel Rockford 900 Pocket Watch with Rare Private Label Dial In An Outstanding Sterling Multi-Gold Inlay Case

Rockford (Illinois); Man's; Serial # 866122; C. 1910

CASE: No. 154560, 18 size, open-face, gold-filled/sterling silver, multi-color, floral/machined/barleycorn/geometric decorations, signed "Philadelphia Watch Case Co."

DIAL: white, porcelain/double sunk, Arabic numerals, spade hands, signed "Sam Mayer Special Denver, Colorado."

MOVT: 24 Jewel, lever-set, No. 86122, lever escapement, nickel, 3/4-plate, signed.

C 3	D 2	M 3	R 8-1/2
-----	-----	-----	---------

Experts Opinion: What an exception watch! 24 Jewel, private label dial, amazing case – it's got it all! Hurry folks!

Price: \$3,550.00

25. Rare 18K Gold 21 Jewel Agassiz 12 Size 8-Day, Up/Down Indicator Pocket Watch

Agassiz (Swiss); Man's; Serial # 249862; C. 1890

CASE: No. 249759, 12 size, open-face, 18K yellow gold, plain decorations, signed "Agassiz Watch Co."

DIAL: Gold, metal, Arabic numerals, Breguet hands, signed "Agassiz."

MOVT: 21 Jewel, stem-set, No. 249862, lever escapement, nickel, bridge style, signed.

C 3	D 3-7	M 3	R 8-1/2
-----	-------	-----	---------

Experts Opinion: An infrequent find! Very heavy 18K monogrammed case with an 8-day movement and up/down indicator. Yes – it is a rare one!

Price: \$1,825.00

26. 18K Gold Tiffany & Co. Split-Second Chronograph 16 Size Open Face Pocket Watch

Tiffany (Swiss); Man's; Serial # 7650; C. 1890

CASE: No. 7650, 16 size, 45mm, open-face, 18K yellow gold, plain decorations and monogrammed, signed "Tiffany & Co."

DIAL: White porcelain/single sunk, Arabic numerals, spade/baton hands, signed "Tiffany & Co."

MOVT: 26 Jewel, stem-set, No. 7650, fully adjusted, lever escapement, nickel, bridge style, signed.

C 3	D 3	M 3	R 7
-----	-----	-----	-----

Experts Opinion: Complicated - "I'll Say" – What a special movement by a tremendous retailer!

Price: \$3,550.00

27. 18K Gold Captains, Double Time, Independent Seconds Two-Train 17 Size Open Face Keywind Pocket Watch with Key

Lutz Freres (Swiss); Man's; Serial # 8335; C. 1868

CASE: No. 8335, 17 size, open-face, 18K, yellow, floral/machined/village decorations, dust cover with lake scene, signed "Lutz Freres."

DIAL: Gold color, gold, Roman/makers, baton hands, village and lake side scene engraved.

MOVT: 23 Jewel, keyset, No. 8335, lever escapement, gilt, bridge style, unsigned.

C 3	D 3-16	M 3	R 8
-----	--------	-----	-----

Experts Opinion: Wonderfully engraved case and dial sets this masterpiece apart. Enamel and engraved dust cover adds to the beauty and lake side scene of a gentleman opening the locks to lower the water level.

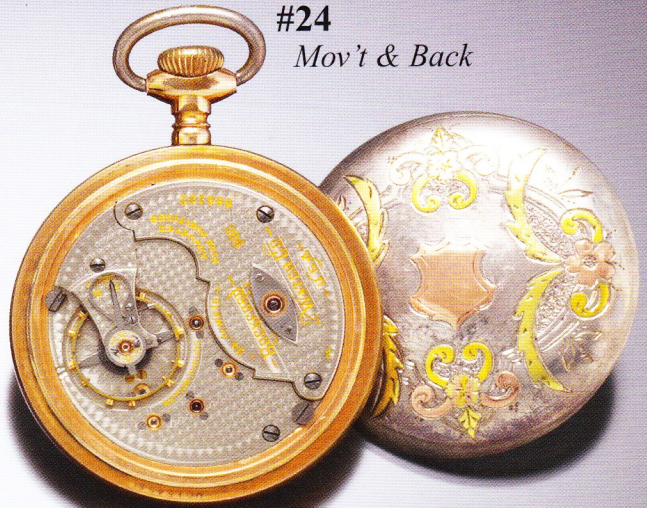
Price: \$3,550.00



#22



#23



#24

Mov't & Back



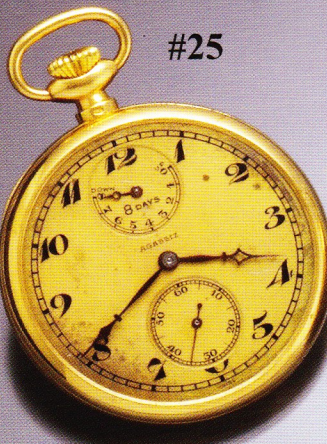
#22

Mov't

#23

Mov't

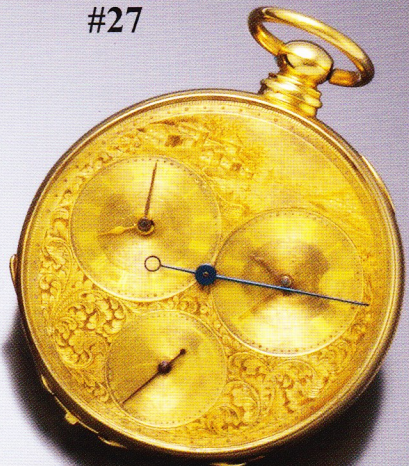
#24



#25



#26



#27



#25

Mov't

#26

Mov't

#27

Dust

Cover

28. 17 Size Silver Verge Fusee Pocket Watch with Hand Painted Scenic Dial With Key

Fres Bordier (Geneve Swiss); Man's; Serial # 4662; C. 1725

CASE: 17 Size, 50mm, open-face, swing-out, sterling silver, plain.

DIAL: Fancy, painted dial of "Lovers of the Forest," porcelain, Arabic numerals, and Breguet hands.

MOVT: Keyset, verge/fusee escapement, gilt, full plate, signed.

C 3	D 3	M 3	R 7
-----	-----	-----	-----

Experts Opinion: An interesting verge with a lovely fancy dial, most likely going to China. Let's keep as many in the U. S. as possible!

Price: \$1,825.00

29. Very-Rare Thin 18K Cylinder Blue Enamel Pocket Watch with Pearls

Heron (Paris, France); Man's; Serial # 127/171; C. 1820

CASE: 18 Size, open-face, 18K yellow gold, enamel decorations with split pearls.

DIAL: White porcelain, Arabic numerals, and Breguet hands.

MOVT: Keyset, No. 127/171, cylinder escapement, gilt, 3/4-plate, unsigned.

C 3-62	D 3	M 3	R 7-1/2
--------	-----	-----	---------

Experts Opinion: A very early cylinder movement in an exceptionally beautiful enamel and split pearl case. What a great appearance!

Price: \$4,050.00

30. Remarkable 18 Size 18K Gold Embossed Multi-Color Gold Dial Pocket Watch with Unique Minute Hand, Hour Hand Layout with Key

Melly Brothers (Geneva); Man's; Serial # 7706; C. 1829

CASE: No. 7706, 18 size, open-face, 18K yellow gold, machined decorations with deeply carved edges, signed "Melly Brothers."

DIAL: Gold/fancy, silver/green/rose, gold type, Roman/markers, baton hands.

MOVT: 23 Jewel, keyset, No. 7706, lever escapement, gilt, bridge style, signed.

C 3	D 3	M 3	R 8-1/2
-----	-----	-----	---------

Experts Opinion: Rare makers known for their unusual variations of lever escapements and dial layout. This is an excellent example of their ingenuity. Massive in 18K gold (TW 75 dwts.) 116 Gr. (T.W.) This rare item offers the greatest 18K dial we have seen in years. Unique hour hand below and minute hand above – wow!

Price: \$3,800.00



#28

#30

#29
Back



#28
Mov't

#29
*Also on
Back
Cover*

#30
Mov't

31. 1/4-Hour Gilt Automaton Verge Fusee Pocket Watch

Berthoud (Paris, France); Man's; C. 1780

CASE: 18 Size, open-face, gold plate, gilt, road, plain.

DIAL: White porcelain, Arabic numerals, starburst hands, signed "Berthoud, Paris."

MOVT: Keyset, verge/fusee escapement, gilt, full plate, signed.

C 3	D 3-57	M 3	R 8
-----	--------	-----	-----

Experts Opinion: The automated pocket watch has been devoured by the Chinese buying machine. Just look at past auctions and you will see amazing results. This clean watch should be put up for a generation and the profits will flow!

Price: \$5,300.00

32. Desirable American Waltham 14K 5-Minute Repeater 17 Size Open Face Hunter Case Pocket Watch

Waltham (Mass.); Man's; Serial # 3793497; C. 1887

CASE: No. 261420, 17 size, 53mm, open-face/hunter case, 14K, rose, machined decorations, signed "Waltham 14K."

DIAL: White porcelain/single sunk, Arabic numerals, spade hands, signed "A. W. W. Co. Waltham."

MOVT: 16 Size, lever-set, No. 3793497, lever escapement, nickel, full plate, signed.

C 3	D 3-50	M 3	R 7-1/2
-----	--------	-----	---------

Experts Opinion: The only repeater made for production in the U. S. A. A rare American collector's item in extra nice condition! Special order case!

Price: \$7,800.00

33. Extremely Rare & Early Garon Verge Fusee 1/4-Hour Silver Pair Case Bell Repeater Pocket Watch & Key

Peter Garon (London U.K.); Man's; C. 1700

CASE: 20 Size, 60mm, pair case, sterling silver, white, plain with pierced inner case.

DIAL: White porcelain, Roman numerals, and spade hands.

MOVT: Keyset, verge/fusee escapement, gilt, full plate, signed.

C 3	D 3-50	M 3	R 8-1/2
-----	--------	-----	---------

Experts Opinion: A stunning 1/4-hour bell repeater from a renowned watchmaker. Very early example of a museum grade timepiece striking the hour & 1/4-hour on a bell!

Price: \$9,050.00

34. Exceedingly Rare John Ellicott 7-1/2-Minute Repeater, Cylinder Escapement 20K Inner Gilt Repousse Outer Pair Cased Museum Pocket Watch

John Ellicott (London, U.K.); Man's; Serial # 6362; C. 1760

CASE: 18 Size, pair case, gilt, 20K, yellow, repousse decoration with mother/child and 4 busts of family members.

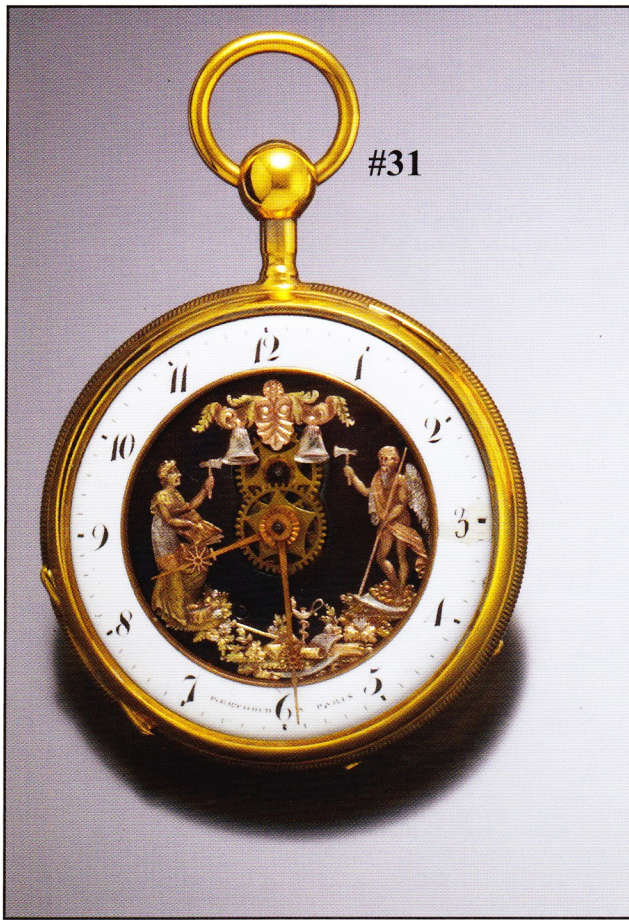
DIAL: White porcelain, Arabic numerals, and poker hands.

MOVT: Keyset, No. 6362, cylinder/fusee, gilt, full plate, signed.

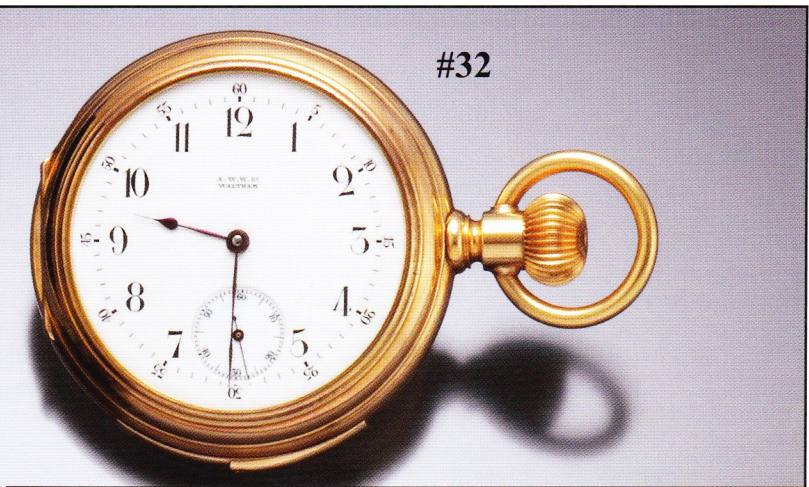
C 3	D 3	M 3	R 9
-----	-----	-----	-----

Experts Opinion: John Ellicott is one of Great Britain's most famous watchmakers, 1/8 of a page in Baille means prominence. What an exceptional quality watch in all respects. 7-1/2-minute on bell, amazing cylinder escapement, special case, original dial and hands! Yes! Yes! Yes!

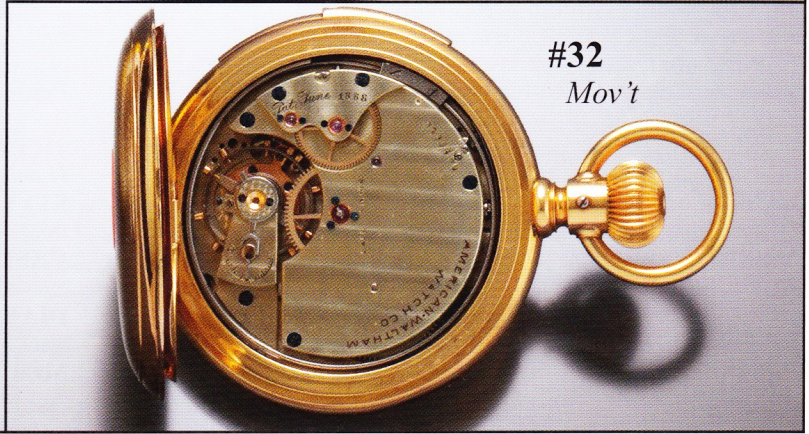
Price: \$18,550.00



#31



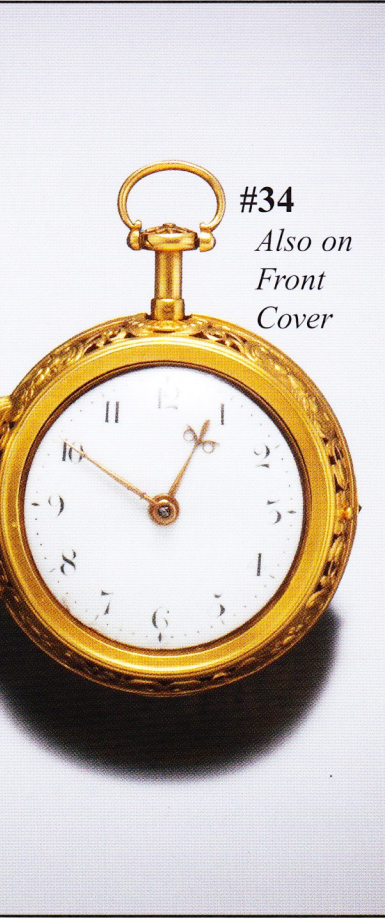
#32



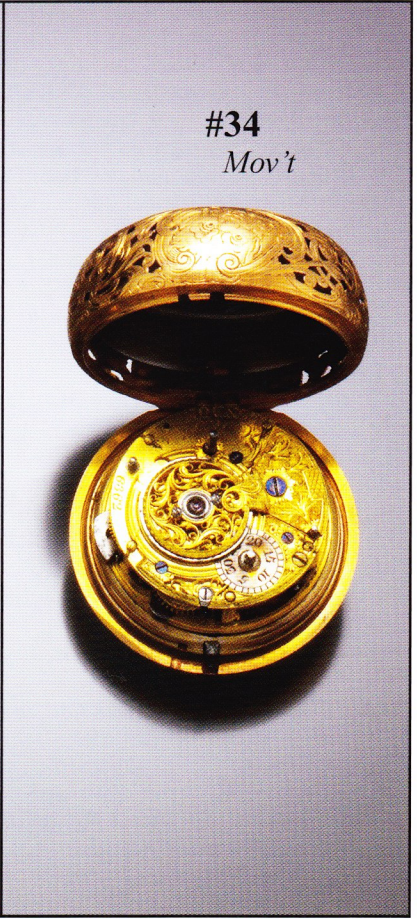
#32
Mov't



#33
*Also on
Back
Cover*



#34
*Also on
Front
Cover*



#34
Mov't

35. Rare 18K Gold 5-Motion Automaton 1/4-Hour Verge Fusee Gent's Pocket Watch With Key

Swiss; Man's; Serial # 15914; C. 1855

CASE: No. 15914, 18 size, open face, 18K, rose-gold, machined decorations and signed "PHPI."

DIAL: White porcelain, Arabic numerals, and Breguet hands.

MOVT: Keyset, No. 15914, verge/fusee, gilt, full plate, unsigned.

C 3 D 3 M 3 R 9

Experts Opinion: Motion #1 Jack enters upper window, motion #2 jack strikes bell for hours, #3 jack returns to hidden area, #4 & 5 - 1/4-hours are struck by two Cherubs below. Friends - these automated watches are an extraordinary work of art, let's keep a few in America. This scarce variation is a prime example. Last sale in Germany brought \$28-\$30,000.00 for the same item, to whom? The Chinese!

Price: \$22,550.00

36. Charming Platinum & Diamond Lady's Wrist Watch By Tiffany & Co. (T. W.) 1.0 Carat

E. Huguenin (Tiffany); Swiss; Lady's; C. 1930s

STYLE: Length lug-to-lug 28mm, width 14mm without crown, thickness 5mm.

CASE: No. 56739, platinum, white, rectangular shape, fancy lugs, diamonds bezel, snap back.

BAND: Cord

DIAL: Silver, Arabic numerals, minute/5-minute track, baton hands.

MOVT: Manual, 15 jewel, 3 adjustments, lever escapement, stem-set, signed.

C 3 D3-28 M 3 R 7

Experts Opinion: Clean and sweet for the loved one. A rare little beauty!

Price: \$1,025.00

37. Impressive Retro 14K Green & Pink Lady's Covered Dial Bracelet Wrist Watch with Diamond & Ruby Trim

ERA Watch Co.; Swiss; Lady's; C. 1940s

STYLE: Length lug-to-lug 37mm, width 15mm without crown, length with band 7-1/2", thickness 12mm.

CASE: 14K pink/green, rectangular shape, hidden lugs, diamond and ruby bezel on cover, snap back.

BAND: Flexible, green-gold bracelet, 7-1/8".

DIAL: Rose, Arabic/markers, baton hands.

MOVT: Manual, 17 jewel, lever escapement, stem-set, signed.

C 3 D 3 M 3 R 7

Experts Opinion: T. W. 33 dwts (51.3 gr.) Early Retro/Lute deco! This amazing watch has it all. What a look! Pull down on bottom ruby cluster and cover pops open to expose watch.

Price: \$2,550.00

38. Scarce Original Mickey Mouse Unisex Wrist Watch with Matching Mickey Mouse Bracelet

Ingersoll; U. S. A.; Unisex; C. 1930s

STYLE: Length lug-to-lug 40mm, width 32mm without crown, length with band 6", thickness 8mm.

CASE: Base metal, white, round shape, snap back.

BAND: Original Mickey Mouse, 6".

DIAL: Off-white, Arabic numerals, minute/5-minute track, Mickey's hands, rotating mice.

MOVT: Manual, lever escapement, stem-set, signed.

C 2 D 2 M 2 R 2

Experts Opinion: Never seen one this nice. A true collector's item in many respects!

Price: \$700.00

39. Very Rare Elgin Direct Read Golf Ball Gent's Wrist Watch

Elgin; Swiss; Man's; C. 1950s

STYLE: Length lug-to-lug 38mm, width 30mm without crown, thickness 7mm.

CASE: No. U219832, REF. #9587, gold-filled, yellow, round

16

shape, curved lugs, golf ball pattern, snap back.

DIAL: Off-white, Arabic, minute/5-minute track, digital.

MOVT: Manual, 17 jewel, lever escapement, stem-set, signed.

C 3 D 3 M 3 R 7-1/2

Experts Opinion: A scarce variation of the Elgin direct read series!

Price: \$650.00

40. Rare 23 Jewel Lord Elgin Jump Hour & Wandering Minute Rectangular Gent's Wrist Watch

Elgin; Swiss; Man's; C. 1950s

STYLE: Length lug-to-lug mm, width mm without crown, thickness mm.

CASE: Yellow-gold-filled, rectangular shape, curved lugs, snap back.

DIAL: Off-white/two-tone, Arabic numerals, minute track, direct read.

MOVT: Manual, 23 jewel, stem-set, signed.

C 3 D 3 M 3 R 8

Experts Opinion: The most sought after of the Elgin series, big oversized direct read.

Price: \$850.00

41. Two-Tone Hamilton Electric Railroad Watch "Special #51"

Hamilton; Swiss; Man's; C. 1963

STYLE: Length lug-to-lug 45mm, width 35mm without crown, thickness 8mm.

CASE: No. P808231, stainless, gold-filled, white/yellow, round, curved lugs, screw back.

DIAL: White, R R Special, Arabic numerals, minute/5-minute track, baton hands, and center sweep seconds.

MOVT: Electric, Model 505, stem-set.

C 3-9 D 3 M 3 R 7

Experts Opinion: The Hamilton Electric series has been a rock throughout this financial upheaval. Great watch, solid investment!

Price: \$400.00

42. Hamilton Gemini 11 Electric Gold-Filled Wrist Watch

Hamilton; Swiss; Man's; C. 1963

STYLE: Length lug-to-lug 35mm, width 30mm without crown, thickness 10mm.

CASE: Yellow-gold-filled, square, curved lugs and snap back.

DIAL: Off-white, markers, baton hands, center sweep.

MOVT: Electric, Model 505, stem-set, signed.

C 3 D 3 M 3 R 6-1/2

Experts Opinion: Disappearing as we speak, these Electrics are quite an excellent investment!

Price: \$325.00

43. Rare Variation Of The Famed Bulova Accutron Scarce Case Shape Wrist Watch With Bow Tie Lugs

Bulova Accutron; Swiss; Man's; C. 1960s

STYLE: Length lug-to-lug 40mm, width 35mm without crown, thickness 8mm.

CASE: No. C31059; This white stainless round case features bow tie lugs and a screw back.

BAND: Alligator.

DIAL: Silver, markers, minute/5-minute 1/5-second, radium hands, center sweep seconds, date windows.

MOVT: Electric, Model 218, stem-set, signed.

C 3 D 2 M 3 R 8-1/2

Experts Opinion: Only one we have ever seen of this case style and it is mint!

Price: \$500.00



#35
Also on Back Cover

#36

#37

#38

#37
Side



#40

#42

#41

#39

#43

44. Rare AstroMark II Bulova Accutron w/Time Zone&Date

Bulova; Swiss; Man's; C. 1970s

STYLE: Length lug-to-lug 40mm, width 35mm without crown, thickness 8mm.

CASE: No. A97154, stainless, white, cushion shape, curved lugs, screw back.

DIAL: Black/two-tone/red, Arabic/markers, minute/5-minute track, baton/radium hands, center sweep seconds, time zone aperture.

MOVT: Electric, Model 218, stem-set, signed.

C 3-9 D 2 M 2 R 8

Experts Opinion: Originally sold at \$275.00 Upper button adjusts hour hand only for time zone change. A real rarity!

Price: \$600.00

45. Scarce Accutron Astronaut Man's Steel Wrist Watch

Bulova; Swiss; Man's; C. 1940s

STYLE: Length lug-to-lug 40mm, width 35mm without crown, thickness 10mm.

CASE: No. C35921, REF. #214, stainless, white, round shape, hidden/curved lugs, enamel bezel, screw back.

DIAL: Black, markers, minute/5-minute track, baton hands, and center sweep seconds.

MOVT: Electric, Model 214, stem-set, signed.

C 3 D 3 M 3 R 6

Experts Opinion: Our best selling Accutron - great look!

Price: \$625.00

46. Gold-Filled Illinois "Male" Two-Tone Gent's Wrist Watch

Illinois; U. S. A.; Man's; C. 1929/32

STYLE: Length lug-to-lug 35mm, width 30mm without crown, thickness 8mm.

CASE: No. 590797, gold-filled, white/yellow, tonneau-shape, hidden/curved lugs, engraved bezel, snap back.

DIAL: Two-tone/silver, Arabic numerals, minute/5-minute track, spade hands, subsidiary seconds.

MOVT: Manual, No. 5566124, 17J, lever escapement, stem-set, signed.

C 3 D 3-28 M 3 R 7

Experts Opinion: These sell as fast as we list them!

Price: \$425.00

47. Exceptional Large Illinois Square with Cut Corners Two-Tone Dial Man's Nickel Wrist Watch

Illinois; U. S.; Man's; C. 1927

STYLE: Length lug-to-lug 38mm, width 30mm without crown, thickness 8mm.

CASE: No. 9148817, gold-filled, nickel, white/yellow, square with cut corners, carved bezel, snap back.

DIAL: Black/two-tone/silver, Arabic numerals, minute track, spade hands, subsidiary seconds.

MOVT: Manual, No. 5042881, 17 J, lever escapement, stem-set, signed.

C 3 D 3-28 M 3 R 7

Experts Opinion: Scarce wrist watch, large size, great look! Hurry on this one!

Price: \$425.00

48. Illinois Viking White Gold-Filled Watch (Seconds at 9:00)

Illinois; U. S.; Unisex; C. 1928

STYLE: Length lug-to-lug 38mm, width 30mm without crown, thickness 6mm.

CASE: No. 588395, gold-filled, white, tonneau-shape, carved bezel, snap back.

DIAL: Off-white/two-tone/gold, Arabic numerals, minute/5-minute track, spade/radium hands, subsidiary seconds at 9:00 position.

MOVT: Manual, No.5127729, 17J, lever escapement, stem-set, signed.

C 3 D 3-7 M 3 R 7-1/2

Experts Opinion: Another seldom seen watch (all original) Viking model!

Price: \$450.00

49. Very Rare Croton Ruby Vacuum Automatic Wrist Watch Case Is Actually Made of Red Corundum (Ruby)

Croton; Swiss; Man's; C. 1970

STYLE: Length lug-to-lug 36mm, width 36mm without crown, thickness 10mm.

CASE: Red corundum (ruby)/dark red, square shape, hidden lugs, vacuum sealed.

DIAL: Maroon in color, Roman numerals, baton hands, center sweep seconds, date windows/day windows.

MOVT: Automatic, 17 jewel, lever escapement, stem-set, signed.

C 3 D 3-9 M 3 R 8

Experts Opinion: Must be rare, cannot find any information on this beauty. Natural ruby case - super cool!

Price: \$600.00

50. Hard-To-Find South Bend Fancy Dial Unisex Wrist Watch

South Bend; U. S.; Unisex; C. 1912

STYLE: Length lug-to-lug 38mm, width 32mm without crown, thickness 7 mm.

CASE: No. 584729, nickel, base metal, white, cushion, curved lugs, engraved bezel, snap back.

DIAL: Fancy 4-color, roman numerals, minute/5-minute track, fancy hands, subsidiary seconds.

MOVT: Manual, No.696940, 15J, lever escapement, stem-set, signed.

C 4-53 D 3-44 M 3 R 8

Experts Opinion: Very rare American wrist watch with a lovely dial. Case wear is all on the hidden back.

Price: \$525.00

51. Exceedingly Rare 1/2-Size "Boys" Gallet Stainless Steel Olive Button Chronograph Watch With 30-Minute Register

Gallet; Swiss; Swiss; C. 1940s

STYLE: Length lug-to-lug 30mm, width 26mm without crown, thickness 10mm.

CASE: No. 8912639, stainless, round, curved lugs, snap back.

DIAL: Silver, Arabic numerals, minute/5-minute/1/5-second track, baton hands, subsidiary seconds, 30-minute register.

MOVT: Manual, 17 jewel, lever escapement, stem-set, signed.

C 3 D 3-6 M 3 R 8-1/2

Experts Opinion: Super rare in this small size, all original and excellent condition for the true collector (back lid has a few small nicks).

Price: \$1,975.00

52. Complex Wittnauer Man's Steel Round Button Chronograph With 30-Minute & 12-Hour Registers

Wittnauer; Swiss; Man's; C. 1950s

STYLE: Length lug-to-lug 40mm, width 36mm without crown, thickness 10mm.

CASE: No. 5754143, REF. #800, stainless, white, round shape, oversize/curved lugs, screw back.

DIAL: Silver, Arabic numerals, minute/5-minute/1/5-second/12-hour register.

MOVT: Manual, 17 jewel, lever escapement, stem-set, signed.

C 3-9 D 3-29 M 3 R 7-1/2

Experts Opinion: Restored and ready to wear. A very complicated watch at a reasonable price!

Price: \$600.00

53. Wonderful Mulco Anti-Magnetic Steel Gent's Chronograph Wrist Watch With 30-Minute Register

Mulco; Swiss; Man's; C. 1940s

STYLE: Length lug-to-lug 45mm, width 36mm without crown, thickness 10mm.

CASE: Stainless, white, round shape, oversize/curved lugs, screw back.

DIAL: Silver, Arabic numerals, minute/5-minute/1/5-second/telemeter track, baton/radium hands, subsidiary seconds, 30-minute register.

MOVT: Manual, 17 jewel, lever escapement, stem-set, unsigned.

C 3-9 D 2-7 M 2 R 7

Experts Opinion: An unbelievable condition watch. Oversized chronographs are rare and in this exciting condition - I would say - buy it!

Price: \$575.00



54. Le Coultre Futurmatic Up/Down Indicator Yellow Gold-Filled Automatic Wrist Watch

Le Coultre; Swiss; Man's; C. 1950

STYLE: Length lug-to-lug 45mm, width 35mm without crown, thickness 8mm.

CASE: Yellow-gold-filled, round shape, fancy/curved lugs, screw back.

DIAL: Off-white, two-tone, markers, minute/5-minute track, baton hands, subsidiary seconds, and power reserve.

MOVT: Automatic, 17 jewel, lever escapement, back-set, signed.

C 3	D 3-7	M 3	R 7-1/2
-----	-------	-----	---------

Experts Opinion: An investment watch that you can't find any more! Power indicator on dial!

Price: \$700.00

55. Fancy-Cut Case Gruen Curvex 43mm Gold-Filled Watch

Gruen; Swiss; Man's; C. 1940

STYLE: Length lug-to-lug 43mm, width 22mm without crown, thickness 7mm.

CASE: No. G983016, REF. #370/600, gold-filled, yellow, rectangular shape, curved lugs, carved bezel, snap back.

DIAL: Off-white, Arabic/markers numerals, minute/5-minute track, baton hands, subsidiary seconds.

MOVT: Manual, 17 jewel, lever escapement, stem-set, signed.

C 3	D 3-15	M 3	R 7
-----	--------	-----	-----

Experts Opinion: Wall Street look! Big and curved, good time-keeper!

Price: \$625.00

56. Exquisite 14K Red-Gold Gruen Curvex Wrist Watch with Two-Tone Matching Dial

Gruen; Swiss; Unisex; C. 1940s

STYLE: Length lug-to-lug 40mm, width 25mm without crown, thickness 6mm.

CASE: No. G433862, REF. #440/450, 14K rose-gold, rectangular shape, curved lugs, snap back.

DIAL: White/rose/two-tone, Arabic numerals, minute/5-minute track, baton hands, subsidiary seconds.

MOVT: Manual, 17 jewel, lever escapement, stem-set, signed.

C 2	D 2	M 2	R 7-1/2
-----	-----	-----	---------

Experts Opinion: One of the most beautiful Gruen's we have owned in a long time. Rich pink/red-gold with matching two-tone dial – yikes!

Price: \$2,300.00

57. Movado Day-Date-Calendar Steel Gent's Wrist Watch

Movado; Swiss; Man's; C. 1945

STYLE: Length lug-to-lug 40mm, width 32mm without crown, thickness 10mm.

CASE: No. 0487724, REF. #14788, outside between lugs 7724, stainless, white, round, curved lugs, screw back.

DIAL: Off-white/black/two-tone, original, Arabic numerals, minute/5-minute track, baton hands, subsidiary seconds, date windows/day windows/calendar track.

MOVT: Manual, 15 jewel, lever escapement, stem-set, signed.

C 3	D 3-7 (original)	M 2	R 7
-----	------------------	-----	-----

Experts Opinion: Attractive scarce calendar vintage Movado – ready to wear!

Price: \$875.00

58. Scarce 23 Jewel Lord Elgin Mystery Dial Gold-Filled Watch

Elgin; Swiss; Man's; C. 1957

STYLE: Length lug-to-lug 40mm, width 30mm without crown, thickness 5mm.

CASE: No. T728266, REF. #7620, gold-filled, yellow, round shape, curved lugs, snap back.

DIAL: Black/two-tone/gold, markers, mystery hands.

MOVT: Manual, 23 jewel, lever escapement, stem-set, signed.

C 3	D 3	M 3	R 7
-----	-----	-----	-----

Experts Opinion: A scarce gold-filled variation – attractive & eye-catching!

Price: \$450.00

59. Astonishing 18K Omega 24 Jewel Automatic Calendar Wrist Watch with Date & Original Omega Buckle

Omega; Swiss; Man's; C. 1960

STYLE: Length lug-to-lug 39mm, width 33mm without crown, thickness 5mm.

CASE: No. 14792, REF. #62, 18K, yellow, round shape, curved lugs, snap back.

DIAL: Gold, markers, minute/5-minute track, baton/radium hands, center sweep seconds, date windows.

MOVT: Automatic, 24 jewel, lever escapement, stem-set, signed.

C 3	D 3	M 3	R 7
-----	-----	-----	-----

Experts Opinion: Great every day wrist watch for the executive!

Price: \$900.00

60. Rare 18K Longines Conquest Automatic Calendar Watch

Longines; Swiss; Man's; C. 1960s

STYLE: Length lug-to-lug 40mm, width 35mm without crown, thickness 8mm.

CASE: 18K yellow gold round case, oversized lugs, screw back.

DIAL: Off-white, markers, baton/radium hands, center sweep, and date windows.

MOVT: Automatic, 19 jewel, lever escapement, stem-set, signed.

C 3	D 3-15	M 3	R 7-1/2
-----	--------	-----	---------

Experts Opinion: The enameled case back plaque identifies this as an original "Conquest" massive 18K case!

Price: \$1,600.00

61. Elegant 18K White-Gold Diamond Bezel Longines Dress Watch

Longines; Swiss; Man's; C. 1960s

STYLE: Length lug-to-lug 37mm, width 33mm without crown, thickness 5mm.

CASE: 18K, white, round shape, curved lugs, diamonds bezel, snap back.

DIAL: Silver, markers, baton hands, subsidiary seconds.

MOVT: Manual, 17 jewel, lever escapement, stem-set, signed.

C 3	D 3	M 3	R 7
-----	-----	-----	-----

Experts Opinion: Now this is a watch for the Tuxedo wearer. The best of the best!

Price: \$1,025.00

62. Cartier Gold Plated Gent's Tank Quartz Wrist Watch with Original Deployment Buckle

Cartier; Swiss; Unisex; C. 1970s

STYLE: Length lug-to-lug 30mm, width 23mm without crown, thickness 5mm.

CASE: No. 590005, REF. #84210, gold-filled, yellow, rectangular shape, hidden lugs, snap back.

BAND: Standard leather, Cartier deployment buckle.

DIAL: White/two-tone/grey, Roman/markers, minute/5-minute track, and baton hands.

MOVT: Quartz, stem-set.

C 2	D 2	M 2	R 7
-----	-----	-----	-----

Experts Opinion: Deployment buckle. Usually lady's sizes, men's are scarce. This is a cream puff!

Price: \$700.00



63. Very Clean 3/4-Size Rolex Steel Block Dial Wrist Watch

Rolex; Swiss; Unisex; C. 1962

STYLE: Length lug-to-lug 36mm, width 30mm without crown.

CASE: No. 162644, REF. #6430, stainless, white, round shape, curved lugs, screw back bezel.

DIAL: Black, markers, minute/5-minute track, baton/radium hands, and sweep seconds.

MOVT: Manual, 17 jewel, lever escapement, stem-set, signed.

C 3	D 2	M 2	R 7
-----	-----	-----	-----

Experts Opinion: Triple signed, great looking black original dial midsize. Unisex Oyster Speed King look, new and serviced.

Price: \$1,000.00

64. Rare Chris-Craft Logo Dial Rolex Steel DateJust Watch

Rolex; Swiss; Man's; C. 1973

STYLE: Length lug-to-lug 42mm, width 35mm without crown.

CASE: No. 3829734, REF. #1500, stainless, white, round shape, curved lugs, smooth bezel, and oyster back.

DIAL: Silver, markers, Chris-Craft Boat Logo, original dial, baton hands, center sweep seconds, date windows!

MOVT: Automatic, 26 jewel, fully adjusted, stem-set, signed.

C 3	D 3	M 3	R 8
-----	-----	-----	-----

Experts Opinion: Rare original dials with advertising logos of Chris-Craft boats. In great condition, bringing premium prices at auctions – serviced 2009!

Price: \$1,175.00

65. Rare 14K Rolex 3604 Unisex Cushion-Shaped Watch

Rolex; Swiss; Unisex; C. 1940s

STYLE: Length lug-to-lug 35mm, width 30mm without crown, thickness 5mm.

CASE: REF. #3604, 14K, yellow, cushion shape, curved lugs, snap back.

DIAL: Off-white, markers, baton hands.

MOVT: Manual, 17 jewel, lever escapement, stem-set, signed.

C 3	D 3	M 3	R 8
-----	-----	-----	-----

Experts Opinion: Very unusual style, great Rolex logo on back of case. Never had one of these before!

Price: \$3,550.00

66. Great Angelus Day-Date-Calendar (Triple Date) Square Button Chronograph Steel Man's Wrist Watch

Angelus; Man's; C. 1940s

STYLE: Length lug-to-lug 46mm, width 38mm without crown, thickness 10mm.

CASE: No. 240029, stainless, white, round shape, oversized lugs, plain bezel, snap back.

BAND: Standard lizard leather.

DIAL: silver, Arabic/markers, minute/5-minute track, baton hands, subsidiary seconds, 30-minute register, date windows/day windows/calendar track.

MOVT: Manual, 17 jewel, lever escapement, stem-set, signed. Pushers are tarnished and worn.

C 3	D 3	M 3	R 8
-----	-----	-----	-----

Experts Opinion: 38MM triple date chronograph, very impressive watch and triple signed vintage 40's. Oversized and complicated!

Price: \$1,400.00

67. Sweet 18K Gold Tear-Drop Lugged Vacheron & Constantin Gent's Wrist Watch with Screw Back Case

Vacheron Constantin; Swiss; Man's; C. 1942

STYLE: Length lug-to-lug 40mm, width 32mm without crown, thickness 7mm.

CASE: No. 284130, Movt. 443140, 18K yellow gold round

case with tear-drop oversized lugs and screw back.

DIAL: Two-tone, silver, Arabic numerals, minute/5-minute/1/5-second track, baton hands, subsidiary seconds.

MOVT: Manual, 17 jewel, adjusted temperature, lever escapement, stem-set, signed.

C 3	D 3	M 3	R 7-1/2
-----	-----	-----	---------

Experts Opinion: Scarce 18K yellow gold-gold man's Vacheron wrist watch with oversize tear-drop lugs and waterproof, screw back two-tone silvered dial with subsidiary seconds and a mint movement. This beautiful Vacheron & Constantin signed case, dial and movement is a head turner with its 1940s vintage look!

Price: \$4,650.00

68. Exciting Vacheron & Constantin 18K Lady's Tubular Lugged Rectangular Wrist Watch

Vacheron & Constantin; Swiss; Lady's; C. 1943

STYLE: Length lug-to-lug 29mm, width 17mm without crown, thickness 6mm.

CASE: No. 465406, REF. #16, 18K yellow gold rectangular shape, covered tubular lugs, snap back.

DIAL: Black, Arabic/markers, and baton hands.

MOVT: Manual, 18 jewel, fully adjusted, lever escapement, stem-set, signed.

C 3	D 3	M 3	R 7
-----	-----	-----	-----

Experts Opinion: Attractive lady's original vintage covered lugs, Vacheron & Constantin with great looking black dial. A jewel for that special lady!

Price: \$2,050.00

69. Clean, Sharp & Desirable Vacheron & Constantin Steel Screw Back Oversized Man's Wrist Watch

Vacheron & Constantin; Swiss; Man's; C. 1958

STYLE: Length lug-to-lug 42mm, width 34mm without crown, thickness 6mm.

CASE: No. 356332, REF #P454/15B, Movt. #528822; This white stainless, round shape case with curved lugs has a plain bezel is screw back and waterproof.

DIAL: A silver dial with applied white-gold markers featuring gold Maltese has 5-minute track, baton hands, and center sweep seconds.

MOVT: The manual, 18 jewel with lever escapement is stem-set and triple signed.

C 3	D 3	M 3	R 8
-----	-----	-----	-----

Experts Opinion: Very, very scarce stainless 34mm Vacheron & Constantin 50's original silvered spider dial and Maltese gold cross – 18 jewels, screw back, waterproof. Don't miss this beauty!

Price: \$4,300.00

70. Amazing 18K Red/Pink Gold Patek Philippe Rectangular 1438 Wrist Watch w/Original Leather Band, Buckle & Boxes

Patek Philippe & Co.; Swiss; Man's; C. 1939

STYLE: Length lug-to-lug 35mm, width 23mm without crown, thickness 6mm.

CASE: No. 622914, REF. #1438; This 18K pink-gold, rectangular shape case features hidden lugs and a snap back.

BAND: Patek Philippe Alligator band w/18K Patek Philippe buckle.

DIAL: The silver dial displays Roman numerals and markers, baton hands and subsidiary seconds.

MOVT: This manual, 18 jewel movement with lever escapement is stem-set and signed.

C 3	D 3-46	M 3-6	R 9
-----	--------	-------	-----

Experts Opinion: Original inner and outer box, Patek Philippe band and Patek Philippe buckle. Here it is – the gem of the wrist watch section. Will sell fast so don't think too long!

Price: \$11,550.00



#64

#65

#66

#63

#65
Back



#68

#69

#70

#67
Also on
Back Cover

Also on
Front
Cover

With both
Boxes

#68
Side



#33
Mov't



#29
Mov't



#35



#67

ASHLAND continues to be a major buyer...

in the field of horology and vertu with extreme purchasing power. Please give ASHLAND the opportunity to make an offer on your valued collection when the time comes to liquidate your investment.

- * Informative Articles
- * Market Updates
- * Calendar of Events
- * Appraisals
- * Authentication Service
- * And Much More ...

Now Live!
Grand Opening of



- * Pocket Watch Sales
- * Wristwatch Sales
- * Jewelry Sales
- * Auctions
- * Accessories
- * Ephemera

Richard M. Gilbert