

# ASHLAND

*A Catalog of Fine and Important Watches*



#35

#33

#70



Call Toll Free  
1-800-424-5353

or call  
1-941-957-3760

FAX  
1-941-365-4931

SUITE 200, 640 SOUTH WASHINGTON BLVD. • SARASOTA, FL 34236-7137

# ASHLAND

1-800-424-5353  
OR  
1-941-957-3760  
FAX  
1-941-365-4931

A. Due to rapid sales, ordering by phone is recommended. Please ask for RICK GILBERT or JIM MILLER at  
B. Please make checks or money orders payable to: ASHLAND.

We also accept Visa, MasterCard and American Express

C. ASHLAND offers a full seven (7) day return privilege on items improperly described.

D. Orders can be held for 45 days with a 20% non-refundable deposit.

E. Office Hours are 9 a.m. to 5 p.m., Monday through Friday.

Send all checks to: ASHLAND, Suite 200, 640 South Washington Blvd., Sarasota, FL 34236-7137; All Foreign orders should be paid by Bank Wire Transfer; Northern Trust Bank of Florida; ABA #066009650; Checking Account Number 718936; Credit to ASHLAND INVESTMENT

## ASHLAND GRADING SYSTEM GUIDE

The lots described in this catalog have been carefully examined and valued by Ashland's experts and watch makers, taking into consideration the aesthetic, historical and technical interest, age and rarity, as well as the technology available at the time of production of each timepiece.

For such judgment to be as objective as possible, it must rest on a number of criteria, particularly with regards to the age of a lot. Indeed, a wrist watch of less than 50 years old cannot be judged with the same criteria as a Renaissance watch. This is the reason why some of the gradings will only qualify for certain types of watches and will never be used for others.

For example, if, as a general rule, watches can be attributed gradings from 1 to 4 for the case, the dial and the movement, watches of less than 100 years old can be given grading 1 (as new), 3 (in very good condition), or 4 (in good condition). The latter, (grading 4), will be followed by one or more grading numbers to justify why the lot cannot be considered "in very good condition". On the other hand, watches over 100 years old, of similar condition, would indeed be considered as "very good" because of their age and would therefore qualify for grading 3. Needless to say, watches over 100 years old, even the best state of conservation for their age, are unlikely to ever be considered "as new" and would therefore never be eligible for grading 1; for this reason, we have introduced grading 2 (in perfect condition).

At the end of each lot description, before the description, you will find a condition report box, with letters and numbers, divided into 4 sections: these are the grades given to the lot with reference to the condition of its case, its dial and hands, its movement, and its rarity level-if applicable.

To understand the grades shown in the condition report box, consult the Grading System as follows:

**C** for the case, followed by one or more numbers = condition of case.

**D** for the dial (& hands), followed by one or more numbers = condition of dial & hands.

**M** for the movement, followed by one or more numbers = condition of movement.

Next to this condition report box, is an experts rarity box featuring one number from 1-10 as an overall rarity grade.

See example below:

<b>C</b> 1	<b>D</b> 1-01	<b>M</b> 1	<b>R</b> 4
------------	---------------	------------	------------

Case: as new    Dial: as new - original hands    Movement: as new    Rarity Grade

### GUIDE TO GRADING

1 : as new	2 : in perfect condition	3 : very good	4 : good	5 : fair
------------	--------------------------	---------------	----------	----------

C CASE	ENAMEL AND VARIOUS TYPES OF DECORATION	D DIAL (cont.)	HANDS	RARITY GRADE
<b>DETAILS</b>				
6 patinated	54 very worn	25 partly rubbed	01 original	A select group of watches in this catalog have been assigned a "rarity grade" which will appear in the description heading. The total production number of U. S. made pocket watches and vintage wrist watches are fairly well known and accessible, unlike the large and more varied output of European makers and of early horological examples. Therefore, this simplified 1 thru 10 numerical grade is designed to assist collectors and investors in determining the scarcity of a given timepiece in today's market (#1 is considered common to #10, which is an extremely rare item). The following factors are the basis of assigned rarity levels: (c) Historical importance. (d) Condition in relationship to other examples of similar type. (e) Artistic case design, i.e. enamel, unusual shape or form pieces. (f) Low survival rate of similar types. (g) Investment potential for increase indemand and price. A rarity grade will be assigned to highlight items which offer strong investment potential (generally items of level 5 thru 10).
7 slightly oxydized	55 very slightly chipped	26 very well reprinted by the manufacturer	02 replaced by the manufactureer	
8 oxydized	56 chipped	27 partially reprinted	03 later original	
9 slightly scratched	57 damaged	28 very well reprinted	04 partially replaced	
10 scratched	58 very damaged	29 well reprinted	05 period	
11 deeply scratched	59 slight restoration(hard enamel)	30 reprinted	06 later	
12 a dent	60 restored (hard enamel)	31 luminous reprinted	07 repaired	
13 2 dents	61 slight restoration (soft enamel)	32 alterations	08 damaged	
14 multiple dents	62 restored (soft enamel)	33 period, original	09 new luminous	
15 slightly worn	63 period original	34 later original		
16 worn	64 later original	35 period	<b>M MOVEMENT</b>	
17 very worn	65 period	36 later	<b>DETAILS</b>	
18 repolished edges preserved	66 later	37 custom-made	6 patinated	
19 repolished edges altered	67 custom-made	38 to be restored	7 slightly oxydized	
20 back threading damaged	68 to be restored		8 oxydized	
21 period original	69 pearl missing	<b>ENAMEL DIAL DETAILS</b>	9 slightly scratched	
22 later original	70 pearls missing	39 slightly oxydized	10 scratched	
23 period	71 paste stone missing	40 slightly scratched	11 plating slightly deteriorated	
24 later	72 paste stones missing	41 scratched	12 plating deteriorated	
25 custom-made	73 precious stone missing	42 deeply scratched	13 rusted	
26 replacements	74 precious stones missing	43 hairline	14 a dent	
27 lacking elements	75 outer over glaze	44 two hairlines	15 dents	
28 transformations		45 multiple hairlines	16 replacements	
29 alterations	<b>D DIAL</b>	46 chips(s) or hairline(s) under bezel, not visible when closed	17 lacking elements	
30 damaged	<b>METALLIC DIAL DETAILS</b>	47 hairline, subsidiary dial	18 later escapement	
31 very damaged	6 patinated	48 hairlines, subsidiary dial	19 upgraded	
32 restored by the manufacturer	7 slightly oxydized	49 chipped subsidiary dial	20 later balance	
33 slightly restored	8 ozydized	50 hairline(s) barely visible	21 transformations	
34 restorations	9 slightly scratched	51 slightly worn	22 alterations	
35 worn pushpiece	10 scratched	52 worn	23 damaged	
36 worn pushpieces	11 deeply scratched	53 very slightly chipped	24 very damaged	
37 replaced pushpieces	12 a dent	54 chipped, winding aperture	25 restored by the manufacturer	
38 later original crown	13 2 dents	55 chipped	26 slightly restored	
39 period crown	14 multiple dents	56 damaged	27 restorations	
40 to be restored	15 spotted	57 slightly restored	28 inscription rubbed	
41 partially re-gilt	16 slightly worn	58 restored by the manufacturer	29 re-rhodiumed	
42 re-gilt	17 worn	59 restorations	30 re-gilt	
43 bow replaced	18 very worn	60 soft overglazed	31 period, original	
44 hinge worn	19 damaged	61 partly rubbed	32 later original	
45 hinge restored	20 refreshed	62 alterations	33 period	
46 renumbered	21 soft over glazed	63 period, original	34 later	
47 hairline	22 slightly restored	64 later original	35 custom-made	
48 2 hairlines	23 restored by the manufacturer	65 period	36 to be overhauled	
49 multiple hairlines	24 restorations	66 later	37 to be restored	
50 slightly scratched		67 custom-made	- a. cleaned	
51 scratched		68 to be restored	- b. minor	
52 slightly worn			- c. major	
53 worn			- d. broken staff	
			* overhaul recommended (at buyer's expense)	
			** overhaul required (at buyer's expense)	



**1. Outstanding Lady's Highly Embossed 3/0 Size 14K Gold Hunters Case Pocket Watch**

Waltham (Mass.); Lady's; Serial # 12647150; Circa: 1903  
**CASE:** No. 118112, 3/0, 27mm, 14K yellow gold hunter case with extra high-relief flowers, vines and diamonds. Floral decorations and extra high-relief flowers with three diamonds for floral centers, signed "A. W. C. Co. 14K."  
**DIAL:** This white porcelain, single sunk dial displays Arabic numerals, spade hands, signed "Waltham."  
**MOVT:** This 15 Jewel, stem-set, No. 12647150, lever escapement, nickel, 3/4-plate, signed "Waltham Ruby."

C 2	D 2	M 2	R 8
-----	-----	-----	-----

*Experts Opinion: A tiny 14K beauty extra high-relief fancy 14K bow with fancy blank monogram, shield flowers and vines cover the entire case on both sides with diamonds for the center of the three flowers on the back lid. This scarce "Ruby" model also has a mint porcelain dial. Worn as a lapel watch or on a chain - don't miss this one!*

**Price: \$1,525.00**

**2. Amazing 14K Gold 0 Size Lady's Heavily & Heavenly Deeply Embossed & Engraved Hunter Case Pocket Watch**

S. B. Burritt - Swiss; Lady's; Serial # 2103909; Circa: 1890's  
**CASE:** No. 106766, 0 size, 34mm, hunter case, 14K rose-gold, floral decorations. Extra high-relief designs covering the entire case, vines & flowers, signed "Dubois Watch Case Co."  
**DIAL:** white, porcelain/single sunk, Arabic numerals, red 5-minute track, filigree hands, signed "S. D. Burritt."  
**MOVT:** This 17 Jewel, stem-set movement No. 2103909, adjusted, lever escapement, nickel, 3/4-plate, signed "S. B. Burritt, Rochester, New York."

C 2	D 2	M 2	R 8
-----	-----	-----	-----

*Experts Opinion: Fully ornate extra high-relief designs with 14K fancy matching bow. Very heavy 14K for this size case with a magnificent antique-look for this 120 year old beauty! Super heavy mint case - un-comparable!*

**Price: \$1,375.00**

**3. Outragious Deep Swirled Cut 14K Lady's Massive Hunters Case Pocket Watch With Pin & Fancy Dial**

Elgin (Illinois); Lady's; Serial # 6023842; Circa: 1895  
**CASE:** No. 109334, 0 size, 33mm, hunter case, 14K rose-gold. High-relief curved ribbed design, signed "K & V Mfg. Co. 14K U. S. Assay."  
**DIAL:** Fancy, porcelain, Roman numerals, filigree hands, signed "Elgin."  
**MOVT:** This 15 Jewel, stem-set, No. 6023842, lever escapement, gilt, 3/4-plate, signed.

C 2	D 2	M 2	R 8
-----	-----	-----	-----

*Experts Opinion: Fancy gold Fleur-de-lis lapel pin. Unused beautiful and unique with its extra high-relief scalloped curved designs covering complete case and fancy gold Fleur-de-lis lapel pin to top it off. Mint fancy multi-color Elgin porcelain dial, baby blue/white/black & gold colors. Very heavy 14K gold watch for a 0 size!*

**Price: \$1,375.00**

**4. Sensational 18K Diamond Well Carved Floral Brooch Watch With The Tiniest Lapel Watch Insert**

Brevete (Swiss); Lady's; Circa: 1908  
**CASE:** No. 11443, miniature, 45mm, open face, 18K yellow gold, floral/barley corn decorations, signed "Brevete." Diamond décor - amazing brooch!  
**DIAL:** A fancy porcelain dial displaying Arabic numerals and baton hands.  
**MOVT:** This 15 Jewel movement is pin-set and features lever escapement, is gilt and bridge style.

C 3	D 3	M 3	R 7-1/2
-----	-----	-----	---------

*Experts Opinion: 35 Single-cut diamonds decorate this extraordinary rare miniature watch. Set through a front pin, winds by the back. Never seen one before and never will again! This true rarity is due to the small size of the watch.*

**Price: \$5,800.00**

**5. 18K Gold 10 Size Enamel Decorated Unisex Hunter Case Keywind Pocket Watch With Key**

*Mathile (Swiss); Unisex; Serial # 41187; Circa: 1879*  
**CASE:** No. 41187, This 10 size, hunter case, 18K yellow gold case displays floral/barley corn/geometric decorations.

**DIAL:** This white porcelain dial is single sunk and displays Roman numerals, filigree hands.

**MOVT:** A 16 Size, keyset movement with lever escapement, gilt, bridge style, and signed.

C 3-12	D 3	M 3-7	R 7
--------	-----	-------	-----

*Experts Opinion: A scarce watch that is becoming scarcer due to the gold content. Many of these wonders are being melted!*

**Price: \$775.00**

**6. Rare & Highly Sought After 18K Scenic, Double-Sided Enamel Hunters Case Pocket Watch Made For The Lady With Key**

*Lewis Much Swiss; Lady's; Serial # 712; Circa: 1880*  
**CASE:** No. 712, 3/0 size, 30mm, hunter case, 18K yellow gold, enamel decorations. Wonderful lake scene and beautiful farm girl, signed "Louis Muh."

**DIAL:** This white porcelain dial displays Roman numerals and Breguet hands.

**MOVT:** 14K keyset movement with lever escapement, gilt, bridge style, unsigned.

C 3-61	D 3-46	M 3-6	R 7-1/2
--------	--------	-------	---------

*Experts Opinion: These great Artistic creations are all being bought by the Chinese collectors. Prices have increased substantially and are going to increase more in the future!*

**Price: \$3,050.00**

**7. Very Clean Rose-Gold, Silver & Niello Gent's Open Face Pocket Watch**

*Onoto (Swiss); Man's; Serial # 169729; Circa: 1905*  
**CASE:** No. 169729, 10 size, 40mm, open face, coin silver, roes/.900 silver, floral decorations. Niello & rose-gold design, signed "Niel Or".

**DIAL:** This white porcelain, single sunk dial displays Arabic numerals, Breguet hands, signed "Onoto."

**MOVT:** This 15 Jewel movement is stem-set, lever escapement, nickel, 3/4-plate, unsigned.

C 3	D 3-44	M 3	R 6
-----	--------	-----	-----

*Experts Opinion: A very clean and exceptional Niello for the investor, usually Niello's are chipped & damaged. This one is very close to perfect!*

**Price: \$400.00**

**8. Extraordinary 15 Size Tavannes Niello Hunter Case Pocket Watch For The Man**

*Tavannes (Swiss); Serial # 732868; Circa: 1895*  
**CASE:** No. 732868, 16 size, 47mm, hunter case, coin silver, rose-gold, niello and rose-gold design, signed "Trusty."

**DIAL:** This white porcelain dial is single sunk.

**MOVT:** This 15 Jewel, stem-set, lever escapement, nickel, bridge style, signed.

C 3	D 3	M 3	R 7-1/2
-----	-----	-----	---------

*Experts Opinion: Unusual to find so clean of a niello. Holly leaves and vines cover the entire case. A great keeper!*

**Price: \$500.00**

**9. Impressive United States Silver Dollar Pocket Watch With A Superb Decorated Fancy Floral Dial**

*Remontoir (Swiss); Lady's; Circa: 1890*  
**CASE:** 14 Size, open face, coin silver, floral decorations, 1896 U. S. silver dollar.

**DIAL:** Extremely fancy porcelain floral dial displays Arabic numerals and filigree hands.

**MOVT:** 6 Jewel, pin-set, cylinder escapement, gilt, bridge style, unsigned.

C 3	D 3-43	M 3	R 7
-----	--------	-----	-----

*Experts Opinion: Special dial, special case – specially made for you!*

**Price: \$500.00**

**10. Attractive & Unusual Calendar Moonphase Triple Dates Swiss Pocket Watch**

*Swiss; Man's; Serial # 467036; Circa: 1890*  
**CASE:** No. 467036, 52mm, open face, nickel, looks like silver, plain and signed "Gurzelen."

**DIAL:** This fancy white porcelain, single sunk dial displays Roman numerals, filigree hands, unsigned.

**MOVT:** 7 Jewel, pin-set, cylinder escapement, nickel, bridge style, unsigned.

C 3	D 3-45	M 3	R 6
-----	--------	-----	-----

*Experts Opinion: Attractive unusual attention getting vintage moonphase with triple dates – blue & gold moon dial at sub seconds and stem wind. Runs good and all dials function properly!*

**Price: \$525.00**

**11. Rare 16 Size 21 Jewel South Bend "The Studebaker" Pocket Watch With Montgomery Dial**

*Studebaker (Indiana); Serial # 598399; Circa: 1910*  
**CASE:** No. 8088182, 16 size, open face, rose-gold-filled, floral/barley corn/geometric decorations, signed "Dueber 20 Yrs."

**DIAL:** This white porcelain, double sunk dial displays Arabic numerals/Montgomery, spade hands, signed "South Bend."

**MOVT:** 21 Jewel, lever-set, No. 598399, lever escapement, nickel, bridge style, signed.

C 3	D 3-43	M 3	R 8
-----	--------	-----	-----

*Experts Opinion: Rarely offered, rarely seen. A fine watch for the investor of great American railroad time-pieces!*

**Price: \$1,525.00**



## ASHLAND

### 12. Scarce 23 Jewel Illinois Sangamo Special 16 Size Railroad Pocket Watch With Double Time Zone Hands

Illinois; Man's; Serial # 3353021; Circa: 1918

**CASE:** No. 4171444, 16 size, open face, yellow-gold-filled, plain, signed "Wadsworth 25 Years."

**DIAL:** This white porcelain, double sunk dial displays Arabic numerals, spade hands, 2-time zones, signed "Illinois."

**MOVT:** 23 Jewel, lever-set, No. 3353021, lever escapement, nickel, bridge style, signed.

C 3	D 3	M 3	R 7
-----	-----	-----	-----

*Experts Opinion:* Clean and rare – another excellent watch for the collector or investor!

**Price:** \$1,125.00

### 13. 18 Size 24 Jewel Illinois Washington Watch Company Lafayette Gold-Filled Box Hinge Open Face Watch

Illinois; Man's; Serial # 2082724; Circa: 1907

**CASE:** No. 378572, 18 size, open face/box hinge, rose-gold-filled, floral decorations. Man and dog hunting scene, signed "Fahys Montauk."

**DIAL:** This white porcelain, double sunk dial displays Arabic numerals, spade hands, signed "Washington Watch Co."

**MOVT:** 24 Jewel, lever-set, No. 2082724, lever escapement, nickel, full plate, signed.

C 3	D 3	M 2	R 8
-----	-----	-----	-----

*Experts Opinion:* The 24 jewel watches are all being absorbed into collections which will increase in value in upcoming years. This is a beauty! One star!

**Price:** \$2,050.00

### 14. Seldom Seen 1859 Model Keywind/Keyset Appleton Tracy Pocket Watch With Original Sterling Case & Rare Appleton Tracy & Co. Dial "Civil War Watch" With Key

American Waltham (Mass.); Man's; Serial # 150812; Circa: 1864

**CASE:** No. 5245, 18 size, open face, sterling silver, plain, with crest, signed "A. M. Watch Company," sterling silver.

**DIAL:** This white porcelain dial displays Roman numerals, spade hands, signed "Appleton Tracy & Co. Waltham."

**MOVT:** This 15 Jewel, keyset, No. 150812, lever escapement, gilt, full plate, signed.

C 3	D 3	M 3-7	R 7-1/2
-----	-----	-------	---------

*Experts Opinion:* It's very unusual to find these 150 year old watches with original dials but an original case! What a great find!

**Price:** \$1,025.00

### 15. Very Rare Dennison, Howard & Davis Coin Keywind/Keyset Open Face Pocket Watch & Key

American Watch Co. (Mass.); Man's; Serial # 2761; Circa: 1857

**CASE:** No. 1183, 18 size, open face, lid flips open by pendant push, coin silver, white, plain, signed and numbered, coin silver.

**DIAL:** This white porcelain dial displays Roman numerals, spade hands.

**MOVT:** This 15 Jewel, keyset, lever escapement, gilt, full plate, signed "Dennison-Howard-Davis."

C 3	D 3-43	M 3	R 8
-----	--------	-----	-----

*Experts Opinion:* A rare low Circa 1857, No. 2761 – a great Dennison-Howard-Davis movement. Original Dennison enamel dial and 3 oz. coin silver open face case, flip-open back by pushing pendant. Disappearing on open market – try to find one with a movement as nice as this!

**Price:** \$3,050.00

### 16. Wonderful 18 Size Mint Coin Silver Drum-Style Hunter Case Pocket Watch W/Private Label Illinois Movement

Lambert Bros. (Illinois); Man's; Serial # 1033266; Circa: 1890

**CASE:** No. 2197879, 18 size, hunter case, coin silver, white, floral/geometric/stag decorations, signed "Dueber Coin."

**DIAL:** This white porcelain, single sunk dial displays Roman numerals, spade hands, signed "Lambert Bros., New York."

**MOVT:** 7 Jewel, lever-set, No. 1033266, lever escapement, gilt, 3/4-plate, signed "Lambert Brothers, N.Y."

C 2	D 3-43	M 3	R 6-1/2
-----	--------	-----	---------

*Experts Opinion:* I really love mint silver hunters -they are rare and quite beautiful! This is an exceptional one!

**Price:** \$625.00

### 17. 14K 16 Size Mint Beautifully Engraved Elgin Hunter Case Pocket Watch With Special Dial

Elgin (Illinois); Man's; Serial # 11697026; Circa: 1904

**CASE:** No. 4726513, 16 size, hunter case, 14K yellow, floral/machined decorations, signed "Keystone 14K."

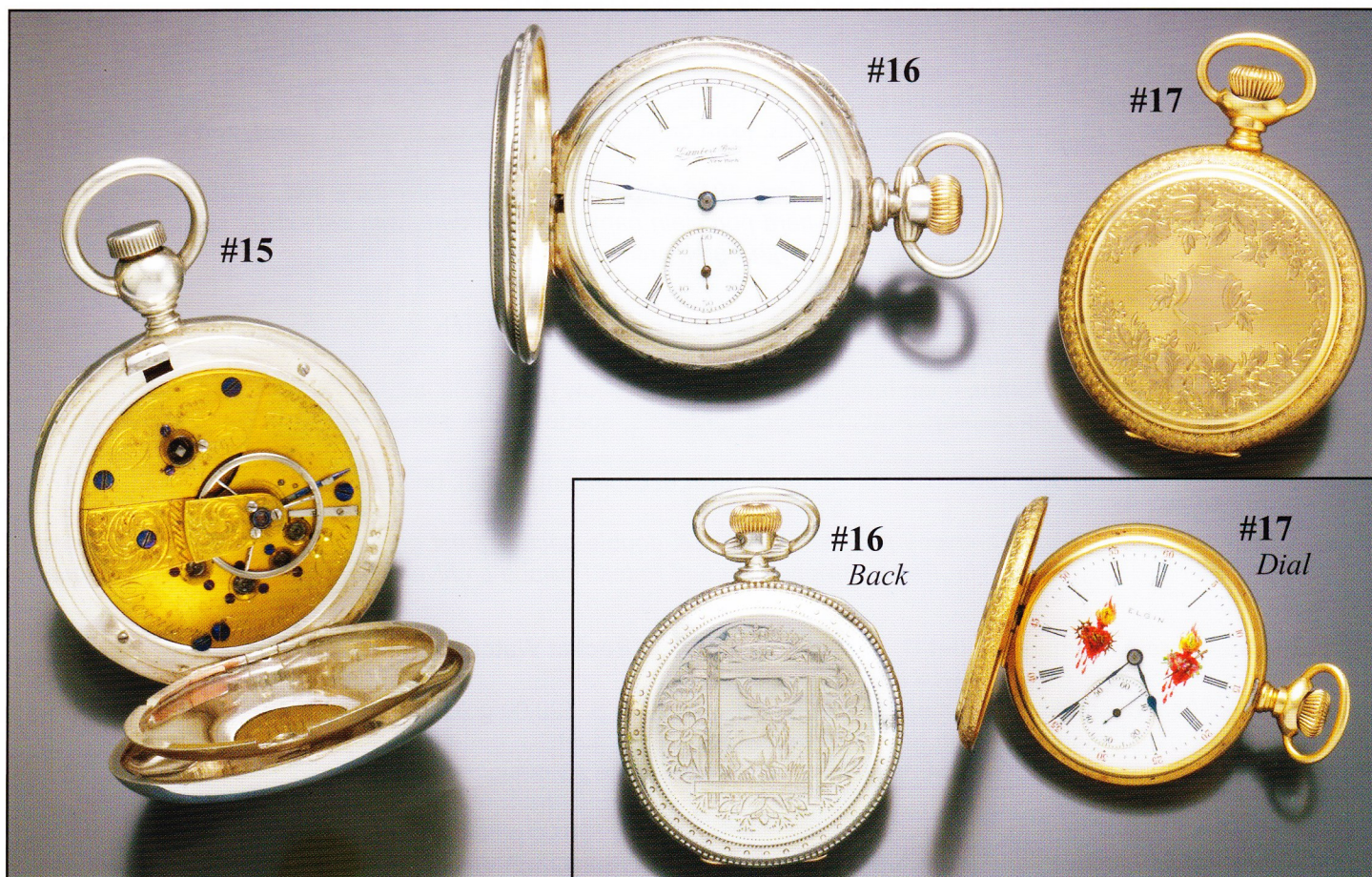
**DIAL:** White, (2) Sacred Hearts painted on the dial, porcelain, Roman numerals, spade hands, signed "Elgin."

**MOVT:** This 15 Jewel, stem-set, No. 11697026, lever escapement, nickel, bridge style, signed.

C 2	D 3	M 3	R 7-1/2
-----	-----	-----	---------

*Experts Opinion:* All are disappearing into the gold scrap pot. This is an exquisite example with nowhere to go but up!

**Price:** \$1,025.00



**18. Large Oversized 18 Size 14K Multi-Colored Gold Waltham Gents Pocket Watch With Fancy Dial**

*Waltham (Mass.); Man's; Serial #15668651; Circa: 1907*

**CASE:** No. 236627, 18 size, hunter case, 14K, multi-color, floral/machined/geometric decorations, signed "S. & Co. 14."

**DIAL:** Fancy, porcelain, Arabic numerals, spade hands, signed "Waltham."

**MOVT:** 7 Jewel, lever-set, No. 15668651, lever escapement, nickel, full plate, signed.

C 3-15	D 3-45	M 3	R 7
--------	--------	-----	-----

*Experts Opinion: Heavy gold 4-color multi hunter case for sale at a very fair price. T. W. 153 grams.*

**Price: \$3,050.00**

**19. 18 Size 14K Box Hinge 4-Color Multi-Gold Hunters Case Pocket Watch By Elgin**

*Elgin (Illinois); Man's; Serial # 6970191; Circa: 1896*

**CASE:** No. 772374, 18 size, hunter case/box hinge, 14K, multi-color, floral/machined decorations, signed "Roy 14K."

**DIAL:** This white porcelain, single sunk dial displays Roman numerals, spade hands, signed "Elgin Natl. Watch Co."

**MOVT:** 17 Jewel, lever-set, No. 6970191, lever escapement, nickel, full plate, signed.

C 3	D 3	M 3	R 7-1/2
-----	-----	-----	---------

*Experts Opinion: A great version of the box hinge multi. Scarce and becoming scarcer. Hurry – won't last long!*

**Price: \$4,000.00**

**20. 18K Early Lady's Patek Philippe Hunters Case Keywind Pocket Watch W/Papers From Patek Philippe Archives & Key**

*Patek Philippe (Swiss) Lady's; Serial # 39771; Circa: 1872*

**CASE:** No. 39771, 6 size, 34mm, hunter case, 18K yellow gold, machined decorations, signed "Patek Philippe for A. H. Rodanet & Cie Paris."

**DIAL:** This white porcelain dial displays roman numerals, Breguet hands.

**MOVT:** 16 Jewel, keyset, No. 39771, lever escapement, gilt, bridge style, unsigned.

C 2	D 2	M 3	R 7
-----	-----	-----	-----

*Experts Opinion: Patek archive papers & gold-filled pin. Early mint vintage piece of history, 18K yellow-gold hunting case, vintage 1872. Approximately 140 years old but looks like new lady's watch worn as lapel or remove lapel and wear with chain – no monograms!*

**Price: \$2,800.00**

**21. Great 18K Patek Philippe 12 Size Open Face Pocket Watch Signed Extra On Movement With Archive Papers**

*Patek Philippe – Tiffany Retailer (Swiss); Man's; Serial # 186599; Circa: 1916*

**CASE:** No. 186599, 12 size, 46mm, open face, 18K yellow gold, plain decorations, fancy monogram on back, signed "Made for Tiffany & Co. by Patek Philippe."

**DIAL:** Gold color, gold type, Roman numerals, Breguet hands, signed "Tiffany & Co. Switzerland."

**MOVT:** 18 Jewel, stem-set, No. 186599, 8 adjustments, extra on movement, lever escapement, nickel, bridge style, signed.

C 2	D 2	M 2	R 8
-----	-----	-----	-----

*Experts Opinion: Patek Philippe archives papers. Early 1916 dress Patek retailed by Tiffany and signed by both on case and movement. Impressive gold dial with factory hard porcelain name and numerals with subsidiary seconds. Nice professional small monogram on the back and comes with Patek archives papers.*

**Price: \$3,550.00**

**22. Excellent 18K Porcelain Dial Patek Philippe 20 Jewel Gent's Pocket Watch**

*Patek Philippe (Swiss); Man's; Serial # 198575; Circa: 1920*

**CASE:** No. 410006, 12 size, 45mm, open face/double back, 18K yellow gold, plain, signed "Patek Philippe."

**DIAL:** This white porcelain dial displays Arabic/Breguet numerals, spade hands, signed "Patek Philippe & Co. Geneva, Switzerland."

**MOVT:** 20 Jewel, stem-set, No. 198575, 8 adjustments, lever escapement, nickel, bridge style, signed.

C 3	D 3-43	M 3	R 7-1/2
-----	--------	-----	---------

*Experts Opinion: Patek Philippe archives papers. Heavy 18K double back highest grade, 20 jewel, wolf tooth winding, signed case, dial and movement. 18K Patek Philippe bow and Patek Philippe archive papers – a great Patek Philippe!*

**Price: \$3,550.00**

**23. Extremely Rare Audemars Piguet U. S. \$20.00 Gold Piece Pocket Watch**

*Audemars Piguet (Swiss); Unisex; Serial # B23053; Circa: 1920*

**CASE:** No. B23053, 8 size, 35mm, hunter case, 22K gold, yellow, U. S. \$20.00 gold coin, signed "Audemars Piguet, Jake."

**DIAL:** Off-white, metal, markers, baton hands, signed "Audemars Piguet."

**MOVT:** 18 Jewel, stem-set, No. B23054, fully adjusted, nickel, bridge style, signed.

C 3	D 2	M 2	R 8
-----	-----	-----	-----

*Experts Opinion: Rare-to-find an Audemars Piguet in an 1898 U. S. \$20.00 gold coin. Hidden side button pops open front lid to expose watch. Ultra-thin and quite rare! Interior of case is personalized "Jake."*

**Price: \$3,800.00**





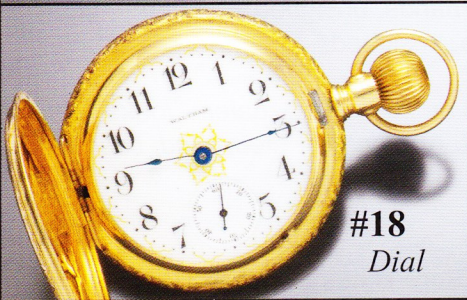
#18



#19



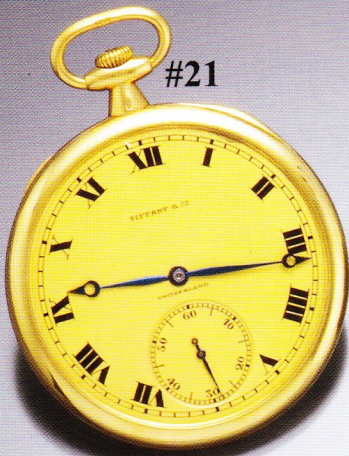
#20



#18  
Dial



#20  
Dial



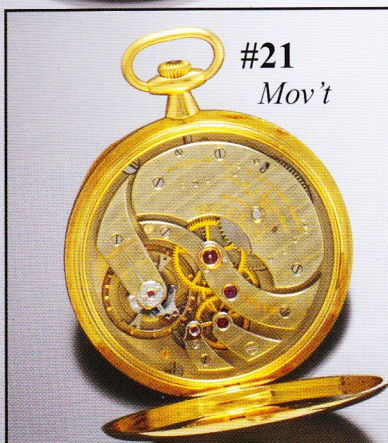
#21



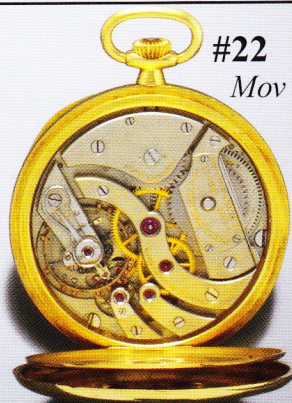
#22



#23



#21  
Mov't



#22  
Mov't



#23  
Back

**24. Massive 18K Lever Fusee Thomas Russell & Son Center Sweep Fully Engraved Hunter Case Pocket Watch & Key**

*Thomas Russell & Son (England); Man's; Serial # 21941; Circa: 1880s*

**CASE:** No. 21941, oversized 56mm, hunter case, 18K yellow gold, floral/machined/geometric decorations, signed "21941" number same as movement.

**DIAL:** This white porcelain, single sunk dial displays Roman numerals, spade hands, signed "Thomas Russell & Son."

**MOVT:** 18 Jewel, keyset, No. 21941, lever/fusee escapement, gilt, full plate, signed.

C 3	D 3-55	M 3	R 7
-----	--------	-----	-----

*Experts Opinion: Extremely heavy 18K fully engraved hunter case original hands and mint porcelain dial. High grade 18 jewel super condition 130 year old watch looks close to new by a most famous English watch maker! Plenty of gold in this 142 grams (T.W.) watch!*

**Price: \$3,550.00**

**25. Very Healthy Silver 1/4-Hour Oversized Swiss Open Face Gent's Repeater Pocket Watch**

*Swiss; Man's; Serial # 31056; Circa: 1890s*

**CASE:** No. 31056, oversized 56mm, open face, .800 silver, machined, signed "System Perfectionne 6 Award Photo's."

**DIAL:** This white porcelain, single sunk dial displays Arabic numerals, filigree hands, unsigned.

**MOVT:** 11-This 15 Jewel, pin-set, No. 31056, lever escapement, gilt, 3/4-plate, unsigned.

C 3	D 3-43	M 3	R 7-1/2
-----	--------	-----	---------

*Experts Opinion: Big very impressive vintage over 100 years old, unworn, silver 1/4-hour repeater – looks nearly unused with original enamel dial and mint movement, runs and strikes perfect. Affordable – stem wind, case never buffed!*

**Price: \$1,575.00**

**26. Black Gun Metal Gallet Super Clean Minute Repeater Pocket Watch W/Rare Black Porcelain Dial**

*Gallet & Co. (Swiss); Man's; Serial # 103901; Circa: 1890*

**CASE:** No. 103901, 16 size, open face, gun metal, black, plain, signed "Gallet & Co."

**DIAL:** Black, porcelain/double sunk, Arabic numerals, spade hands, signed "Gallet."

**MOVT:** This 15 Jewel, stem-set, No. 103901, lever escapement, nickel, 3/4-plate, signed.

C 3	D 2	M 3	R 7
-----	-----	-----	-----

*Experts Opinion: An exceptional repeater in excellent condition. This black beauty is something to cherish!*

**Price: \$1,525.00**

**27. Outstanding 14K Rose-Gold New/Old Stock 1/4Hour Repeater Hunter Case Pocket Watch**

*Swiss; Man's; Serial # 48604; Circa: 1890*

**CASE:** No. 48604, 18 size, 57mm, hunter case, 14K rose-gold, plain, signed ".585 D."

**DIAL:** This white porcelain, double sunk dial displays Arabic numerals, filigree hands.

**MOVT:** 30 Jewel, lever-set, No. 48604, lever escapement, gilt, bridge style, unsigned.

C 2	D 2	M 2	R 8
-----	-----	-----	-----

*Experts Opinion: A superb watch of the highest standard. Unused in condition and fully jeweled through the hammers! What a super timepiece! Jergensen lips on case.*

**Price: \$3,550.00**

**28. 18K A. Golay – Leresche & Son Man's 18 Size Open Face 5-Minute Repeater Pocket Watch**

*A. Golay – Leresche & Sons (Swiss); Man's; Serial # 13920; Circa: 1890/1900*

**CASE:** No. 13920, 18 size, 52mm, open face, 18K rose-gold, plain. Presentation "If you have the time, I'll go." Signed "A. Golay - Leresche & Fils."

**DIAL:** This white porcelain, single sunk dial displays Roman numerals, baton hands, signed "A. Golay – Leresche & Fils."

**MOVT:** 32 Jewel, pin-set, No. 13920, lever escapement, nickel, bridge style, signed.

C 3	D 3	M 3	R 8
-----	-----	-----	-----

*Experts Opinion: Very heavy gold cased watch of exceptional quality. Back cover has presentation and dust cover has been buffed in attempt to remove information. A wonderful quality timepiece for the collector!*

**Price: \$4,800.00**



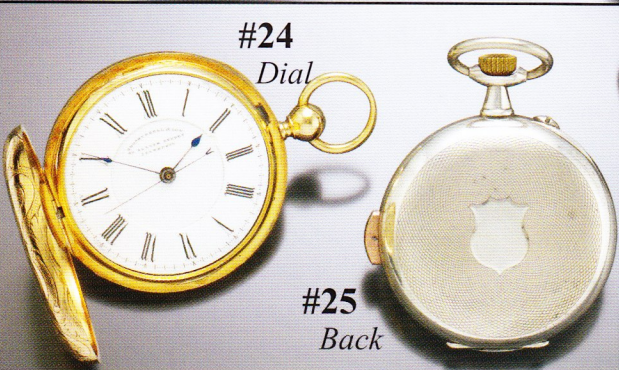
#24



#25



#26



#24  
Dial

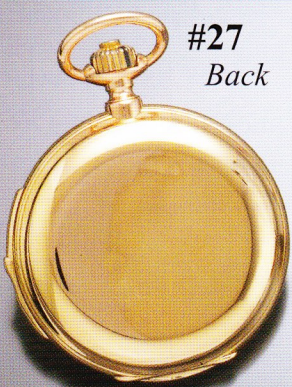
#25  
Back



#27



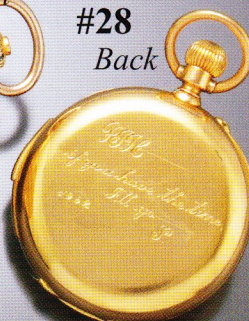
#28



#27  
Back



#27  
Mov't



#28  
Back

**29. 15 Jewel Minute Repeater 8-Day Geneva Clock Co. Travel Clock With Cartier Signed Dial**

*Geneva Clock Co. (Swiss); Unisex; Serial # 130391; Circa: 1930*

**CASE:** No. 8950, oversized 4" x 4", open face, stainless, plain.

**DIAL:** Gold, metal/single sunk, Arabic numerals, spade hands, signed "Cartier 8-Day."

**MOVT:** This 15 Jewel, stem-set, No. 130391, lever escapement, nickel, 3/4-plate, signed.

C 3-16	D 3	M 3	R 8
--------	-----	-----	-----

*Experts Opinion: A minute repeater 8-day travel clock is a very rare item. The dial seems to be re-signed at a later date. Great sound, loud gongs!*

**Price: \$2,800.00**

**30. Very Complex, 18K Hunters Cased Captains Two-Time Zone Pocket Watch With Independent Seconds, Keywind/Keyset**

*H. Rosselet; Man's; Serial # 2063; Circa: 1870s*

**CASE:** No. 2063, 18 size, 52mm, hunter case, 18K yellow gold, floral/machined, signed "H., Rosselet."

**DIAL:** This white porcelain dial displays Roman/Captains dial, spade hands.

**MOVT:** 23 Jewel, keyset, No. 2063, lever escapement, gilt, bridge style.

C 3	D 3-46	M 3	R 8
-----	--------	-----	-----

*Experts Opinion: Button activated independent seconds, 2 time zone dial, 18K hunters, keywind/keyset. This watch has it all!*

**Price: \$3,550.00**

**31. Ultra-Rare 18K Waltham American Watch Co. Double Dial Chronograph Open Face Pocket Watch**

*American Watch Co. (Mass.); Man's; Serial # 1590071; Circa: 1880*

**CASE:** No. 6258, 14 size, open face, 18K, rose-gold, personalized back, signed "Warranted 18K."

**DIAL:** This white porcelain, single sunk dial displays Roman numerals, spade hands.

**MOVT:** 16 Jewel, lever-set, lever escapement, gilt, full plate, signed.

C 3	D 3	M 3	R 8-1/2
-----	-----	-----	---------

*Experts Opinion: Only a very few double dial chronographs have crossed our desks. This rarity is quite desirable and will not last long. U. S. collectors hurry! Back chronograph dial is visited when pop open back is used. Scarcer in open face than hunter case!*

**Price: \$8,550.00**

**32. Extraordinary Verge Fusee Gilt Repousse Pair Case Pocket Watch With Exceptional & Original Dial, Joined With A Wonderful Gilt Chatalain**

*J. Wilders (London, England); Man's; Serial # 4467; Circa: 1780*

**CASE:** 18 Size, 50mm, pair case, gilt, repousse, three people and horse decorations, signed "T. R."

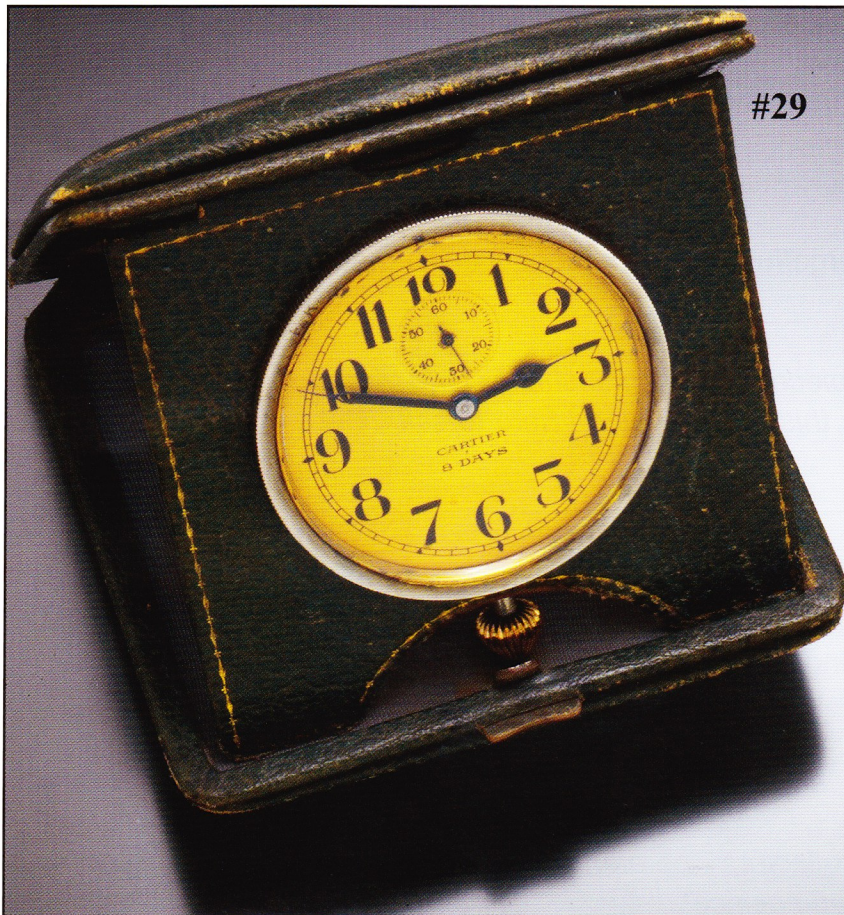
**DIAL:** Silver, fancy, cannons and flags, silver, Roman numerals, poker hands, signed "Wilders."

**MOVT:** Keyset, No. 4467, verge/fusee, gilt, full plate, signed.

C 3	D 3	M 3	R 8
-----	-----	-----	-----

*Experts Opinion: Cases and chain are silver gilt. A great set for the true collector. Oh what a super dial with cannons and flags. A great combination!*

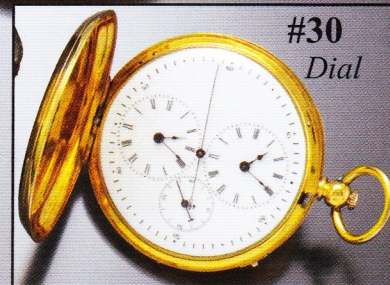
**Price: \$3,550.00**



#29



#30  
Front



#30  
Dial



#31 Also on  
Back Cover

#32

#32  
Front

**33. Extraordinary 20K Verge Fusee Skelatonized Pocket Watch By Jean Antoine Lepine, C. 1755**

*Complications: Early verge/fully skelatonized.*

**CASE:** The case is size 12, 42mm, open face, swing out, yellow 20K gold, it has geometric decorations and it has carved edges.

**DIAL:** This off white porcelain dial has Arabic/marker numerals, filigree/stone studded hands and it is signed Lepine, Paris

**MOVT:** The movement is key set with a verge/fusee escapement, it is gilt material and it has a bridge style/skelatonized layout.

C 2	D 3	M 2	R 9
-----	-----	-----	-----

*Experts Opinion: Oh! What an amazing piece of craftsmanship Lepine was an exceptional watch-maker with over 1/4 page in Baillie's folks this is one watch I hate to sell. One of the great masters work and I feel this was one of his finest.*

**Price: \$ 9,250.00**

**34. Very Rare Moonrise/Sunrise Dial Verge Fusee Pair Case Gent's Pocket Watch & Key**

*Jos. Whitfield (Liverpool, England); Man's; Circa: 1730*

**CASE:** Oversized, 60mm, pair case, sterling silver, plain.

**DIAL:** Silver, blue & gold sun & moon dials, silver, Arabic/Roman numerals, filigree hands, signed "Whitfield Liverpool."

**MOVT:** Keyset, verge/fusee, gilt, full plate, signed.

C 3	D 3	M 3	R 8
-----	-----	-----	-----

*Experts Opinion: Here it is - you fusee collectors - be alert! An early example of a great moon/sunrise verge pair case! Oh what a wonderful timepiece!*

**Price: \$10,550.00**

**35. The Ultimate Collectors Watch – 18K Minute Repeater, Full Perpetual Calendar, Moonphase, Split-Second Chronograph, 60-Minute Register Pocket Watch – Maker: Audemars Piguet**

*Audemars Piguet; Man's; Serial # 15937; Circa: 1911/12*

**CASE:** No. 15937, 16 size, 48mm, open face, 18K yellow, plain, signed "18K 15937."

**DIAL:** This white porcelain, single sunk dial displays Arabic numerals, spade hands, signed "Audemars Piguet."

**MOVT:** 32 Jewel, stem-set, No. 15937, fully adjusted, lever escapement, nickel, bridge style, signed.

C 3	D 2	M 2-22	R 9
-----	-----	--------	-----

*Experts Opinion: This is the most complicated watch we have ever offered publically. A true masterpiece of one of the top three watchmakers of this time! We are proud to own this watch and offer with great respect for the serious collector that will someday possess this masterpiece!*

*Time/moonphase/day, date, month calendar/perpetual calendar/chronograph/split chronograph/60-minute register.*

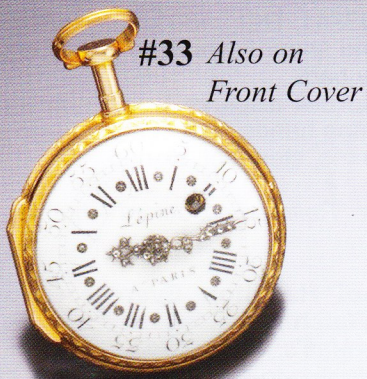
Past sales on record:

1. Antiquorum 4/2004 Lot 163 Geneva AP #33960, same complications Circa 1960 – Sold \$132,000.00 Swiss Francs

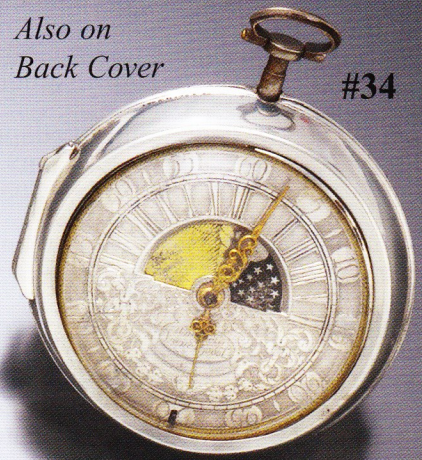
2. Christ's 5/2007 Lot 331 Geneva AP #58784, same complications Circa 1972 – Sold \$156,000.00 Swiss Francs

*We feel the signature on the original Audemars Piguet movement was possibly added by a master engraver, hence the 22 in the grading system! Dial signature appears original!*

**Price: \$55,050.00**



#33 Also on Front Cover

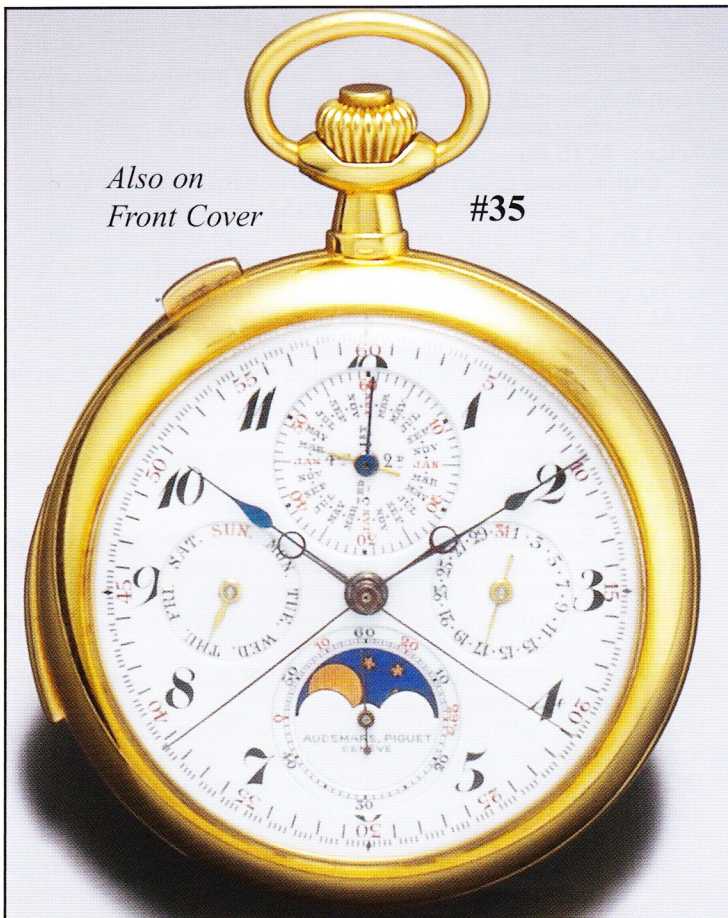


Also on Back Cover #34

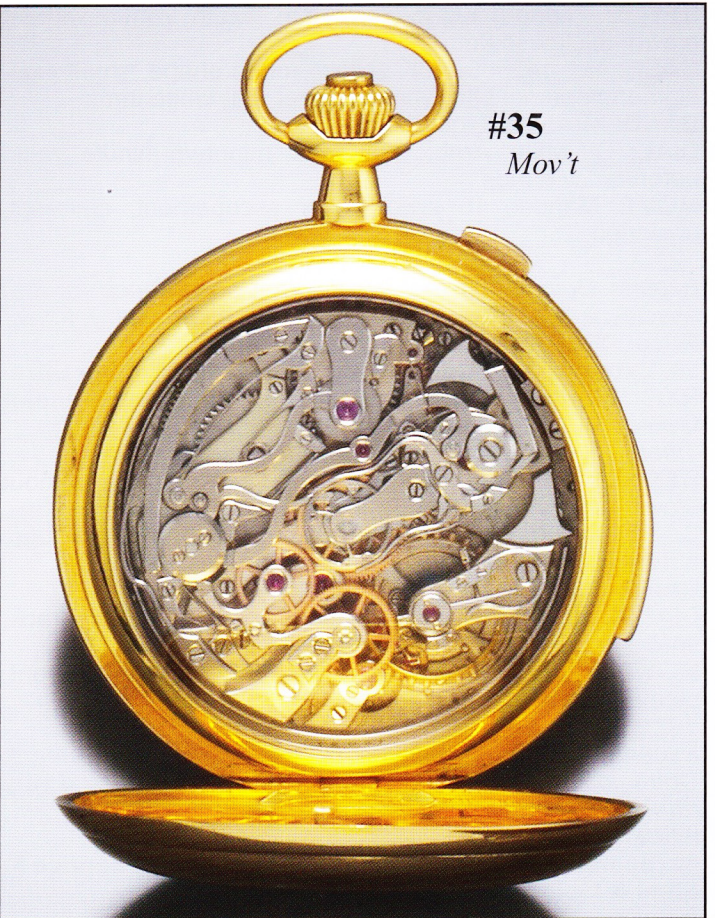


#33 Back

#34 Mov't



Also on Front Cover #35



#35 Mov't

**36. 14K Lucien Piccard Ruby Cluster Floral Covered Lady's Bracelet Wrist Watch***Lucien Piccard; Swiss; Lady's; Circa: 1950***STYLE:** Length lug-to-lug 20mm, width 20mm without crown, length with band 6-1/2.**CASE:** No. C4102, yellow/rose, oval shape. Covered ruby studded lugs, floral cover bezel, snap back.**BAND:** Flexible, bracelet style, 14K original, 27 grams.**DIAL:** Off-white, markers, baton hands.**MOVT:** This manual wind, 17 jewel movement has a lever escapement, stem-set, signed.

C 3	D 3	M 3	R 6
-----	-----	-----	-----

*Experts Opinion: Lovely timepiece bracelet style watch! Great gift for your loved one!***Price: \$1,025.00****37. Absolutely Amazing Rich Red-Gold, Amethyst & Diamond Retro Lady's Covered Bracelet Wrist Watch By Paul Ditisheim***Paul Ditisheim; Swiss; Lady's; Circa: 1950***STYLE:** Length lug-to-lug 33mm, width 16mm without crown, length with band 6-1/4".**CASE:** 14K rose/deep-red, square shape, fancy/covered lugs with diamonds and amethyst on covers and lugs, snap back.**BAND:** Cord, flexible, 14K red-gold.**DIAL:** Rose, Roman numerals, minute/5-minute track, spade hands.**MOVT:** This manual wind, 17 jewel movement has a lever escapement, stem-set, signed.

C 3	D 3	M 3	R 7
-----	-----	-----	-----

*Experts Opinion: This is a stunning wrist watch, amethyst of the deepest color set off by top quality diamonds – top maker!***Price: \$1,525.00****38. Exciting Enamel Lady's Diamond 18K Wrist Watch With Matching Gold-Filled Cord Bracelet***Swiss; Swiss; Lady's; Circa: 1908***STYLE:** Length lug-to-lug 25mm, width 25mm without crown, thickness 8mm.**CASE:** No. 142506, 18K yellow, round shape, small lugs, diamond/enamel blue enamel bezel with white trim.**BAND:** Mesh/cord, gold-filled.**DIAL:** Off-white, Arabic numerals, minute/5-minute track, baton/fancy hands.**MOVT:** Manual, 15 jewel, lever escapement, stem-set, unsigned.

C 3	D 3-6	M 3	R 7-1/2
-----	-------	-----	---------

*Experts Opinion: A real jewel, great appearance for that special night. It's quite rare to find nice enameled watches!***Price: \$775.00****39. Extraordinary Cobalt-Blue Enamel 18K Tiffany Ultra-Rare Complete Lady's Wrist Watch With Bracelet Guilloche Deep Blue Enameling***Tiffany; Swiss; Lady's; Circa: 1940***STYLE:** Length lug-to-lug 30mm, width 30mm without crown, length with band 6".**CASE:** No. 76358, 18K yellow, round shape, small lugs, enamel bezel, snap back, case fully enameled.**BAND:** flexible, signed "18K Tiffany & Co."**DIAL:** Cobalt-blue, Arabic numerals, minute/5-minute track, spade hands.**MOVT:** Manual, No. 76358, 18 jewel, lever escapement, stem-set, signed.

C 3	D 2	M 3	R 8-1/2
-----	-----	-----	---------

*Experts Opinion: Now this makes a very serious statement. Outragously beautiful, fully signed, 100% correct and very rare!***Price: \$3,550.00****40. Scarce Hamilton Electric 505 For Railroad Service In Steel & Gold-Filled Wrist Watch***Hamilton; U. S. A.; Man's; Circa: 1962***STYLE:** Length lug-to-lug 42mm, width 38mm without

crown, thickness 10mm.

**CASE:** No. 3502751, REF. #505, The yellow-gold-filled & white steel, round shape, oversized case features a yellow bezel and screw back.**DIAL:** This white dial displays Arabic numerals, minute/5-minute track, baton hands, and center sweep seconds.**MOVT:** 505 Electric, stem-set, signed.

C 3	D 3	M 3	R 6-1/2
-----	-----	-----	---------

*Experts Opinion: Railroad collectors – hurry – these do not last long!***Price: \$400.00****41. Super Cool Hamilton Everest (Two-Tone Dial) Electric Wrist Watch***Hamilton; U. S.; Man's; Circa: 1941***STYLE:** Length lug-to-lug 35mm, width 30mm without crown, thickness 10mm.**CASE:** No. 22209, REF. #500, Yellow-gold-filled, symmetrical shape case featuring hidden lugs, numbered 12, and snap back.**DIAL:** This off-white dial displays gold Arabic/markers, spade/radium hands, and center sweep.**MOVT:** Electric, 500 Series, stem-set, signed.

C 3	D 3	M 3	R 7
-----	-----	-----	-----

*Experts Opinion: Unusual shape and numbered bezel. Design ahead of its time - well underrated value. A true investment watch!***Price: \$575.00****42. Scarce & Sought After Hamilton Two-Tone Pacer Watch***Hamilton; U. S.; Man's; Circa: 1957***STYLE:** Length lug-to-lug 45mm, width 35mm without crown, thickness 10mm.**CASE:** White & yellow-gold-filled, triangular shape case featuring fancy oversized lugs, and snap back.**DIAL:** This off-white dial displays Arabic/markers, baton hands, and center sweep seconds.**MOVT:** Electric, 50 Series, stem-set, signed.

C 3	D 3	M 3	R 7-1/2
-----	-----	-----	---------

*Experts Opinion: The pacer is one of the fastest selling Hamilton electrics on the market. Worn by "The Men in Black" – this has become an icon in the watch field!***Price: \$775.00****43. Quite Rare Elgin Golf Ball Direct Read Wrist Watch***Elgin; U. S.; Man's; Circa Date: 1957***STYLE:** Length lug-to-lug mm, width mm without crown.**CASE:** Steel back/rose-gold-filled, round shape case featuring curved lugs, direct read, and snap back.**DIAL:** This off-white, two-tone dial displays rotating discs, Arabic numerals, minute/5-minute track, and direct-read.**MOVT:** This manual wind, 17 jewel movement has a lever escapement, stem-set, signed.

C 3	D 3	M 3	R 8
-----	-----	-----	-----

*Experts Opinion: These golf ball models are very hard-to-find in mint condition. This is one!***Price: \$625.00****44. Very Rare Lord Elgin Direct Read Rectangular Gold-Filled Watch, Jump Hour, Wandering Minute***Elgin; U. S.; Man's; Circa Date: 1950s***STYLE:** Length lug-to-lug 35mm, width 25mm without crown, thickness 11mm.**CASE:** A yellow-gold-filled, rectangular-shape case featuring curved lugs and a snap back.**DIAL:** This white and off-white, two-tone dial displays Arabic numerals, minute/5-minute track, and rotating disc.**MOVT:** A manual wind, 21 jewel movement with lever escapement. Stem-set, and signed.

C 3	D 3	M 3	R 8
-----	-----	-----	-----

*Experts Opinion: The most collected of the direct read Elgin series due to the large size. Seldom seen, seldom offered!***Price: \$775.00**





**45. Scarce Illinois Beau Brumme Gold-Filled Wrist Watch**

*Illinois; U. S.; Man's; Circa: 1929*

**STYLE:** Length lug-to-lug 38mm, width 29mm without crown, thickness 7mm.

**CASE:** Gold-filled, yellow, tonneau-shape, curved lugs, carved bezel, snap back.

**DIAL:** Silver, Arabic numerals, minute track, spade/radium hands, subsidiary seconds at 9:00.

**MOVT:** This manual wind, 17 jewel movement has a lever escapement, stem-set, signed.

**C 3 D 3-28 M 3 R 7**

*Experts Opinion: Scarce Illinois wrist watches are quite the collector's item. This is a very clean version!*

**Price: \$500.00**

**46. Super Illinois Square With Cut Corners & Engraved Case Gent's Gold-Filled Wrist Watch**

*Illinois; U. S.; Man's; Circa: 1929*

**STYLE:** Length lug-to-lug 37mm, width 27mm without crown, thickness 7mm.

**CASE:** No. 7070917, Yellow-gold-filled, square shape case featuring curved lugs, carved/engraved bezel, and a snap back.

**BAND:** Flexible, gold-filled.

**DIAL:** This silver dial displays Arabic numerals, minute/5-minute track, Mercedes/radium hands, and subsidiary seconds at 9:00.

**MOVT:** A manual wind, 15 jewel movement with lever escapement. This stem-set movement is signed.

**C 3 D 3-28 M 3 R 7**

*Experts Opinion: Another exciting Illinois with an interesting flex hand. Hurry - this will not last long!*

**Price: \$425.00**

**47. Exceedingly Rare 5 Star 14K Gold 17 Jewel Illinois Rectangular Gent's Wrist Watch With 207 on Movement & Model 250 On Case**

*Illinois; U. S.; Man's; Circa: 1929*

**STYLE:** Length lug-to-lug 38mm, width 25mm without crown, thickness 7mm.

**CASE:** No. 54484, REF. #207, 14K yellow gold, rectangular shape case featuring curved lugs and a snap back.

**DIAL:** This silver dial displays Arabic numerals, gold overlay, minute/5-minute track, and baton hands.

**MOVT:** Manual movement No. 5543772 with 17 jewel, lever escapement, stem-set, and signed.

**C 3 D 3-29 M 3 R 9**

*Experts Opinion: One of the rarest Illinois wrist watches we have ever owned. True collectors - be alert!*

**Price: \$2,550.00**

**48. Scarce Asymmetrical Steel & Gold Accutron Railroad Approved Gent's Wrist Watch**

*Bulova; Swiss; Man's; Circa: 1960s*

**STYLE:** Length lug-to-lug 40mm, width 35 mm without crown, thickness 10mm.

**CASE:** No. B23331, REF. #214, White steel & 14K yellow gold, asymmetrical shape case featuring a reeded 14K bezel and screw back.

**DIAL:** This white dial displays Arabic numerals, minute/5-minute track, spade hands, and center sweep seconds.

**MOVT:** Electric, stem-set, signed.

**C 3 D 3-16 M 3 R 7**

*Experts Opinion: Unusual to find railroad movement in an asymmetrical case. Must be a scarce special order!*

**Price: \$425.00**

**49. Gold-Filled Asymmetrical Accutron Black Dial With Date Gent's Wrist Watch**

*Bulova; Swiss; Man's; Circa: 1960s*

**STYLE:** Length lug-to-lug 40mm, width 35mm without crown, thickness 8mm.

**CASE:** No. D95993, REF #218, The yellow-gold-filled, asymmet-

rical shape case features curved lugs and a screw back.

**DIAL:** This black dial displays markers, minute/5-minute track, baton/radium hands, center sweep, and date windows.

**MOVT:** Electric, stem-set, signed.

**C 3 D 3 M 3 R 6**

*Experts Opinion: Another scarce asymmetrical Bulova Accutron!*

**Price: \$400.00**

**50. Rare & Highly Sought After Accutron Deep Sea With Date Man's Wrist Watch**

*Bulova; Swiss; Man's; Circa: 1960s*

**STYLE:** Length lug-to-lug 45mm, width 40mm without crown, thickness 10mm.

**CASE:** No. 165583, REF #216, A white stainless, round case featuring oversized lugs, enamel bezel and a screw back.

**DIAL:** This black dial displays markers, minute/5-minute track, radium hands - variation of Mercedes, center sweep seconds, and date windows.

**MOVT:** Electric, stem-set, signed.

**C 3 D 3 M 3 R 7-1/2**

*Experts Opinion: 666 Feet diving watch! A rare Accutron with date and great black dial with rotating bezel!*

**Price: \$525.00**

**51. Very Rare Accutron "Astro Mark II" Time Zone With Date & Original Bracelet**

*Bulova; Swiss; Man's; Circa: 1970*

**STYLE:** Length lug-to-lug 36mm, width 40mm without crown, thickness 10mm.

**CASE:** No. D36875, REF. #216, This stainless, gold-plated case is cushion shape and features hidden lugs and a screw back.

**BAND:** Flexible, original marked Accutron bracelet.

**DIAL:** This off-white dial displays markers, minute/5-minute track, baton/radium hands, center sweep seconds, date windows, and aperture for time zones.

**MOVT:** Electric, stem-set, signed.

**C 3-9 D 3 M 3 R 8**

*Experts Opinion: Rarely seen in this original state. A very scarce and complex watch offered here at a fair price!*

**Price: \$675.00**

**52. Very Desirable Accutron Astronaut Steel Wrist Watch**

*Bulova; Swiss; Man's; Circa: 1964*

**STYLE:** Length lug-to-lug 40mm, width 40mm without crown, thickness 10mm.

**CASE:** No. B93206, REF. #214, The white stainless, round case features fancy lugs, enamel/reeded/rotating bezel, and screw back.

**DIAL:** This black dial displays markers, minute/5-minute track, baton/radium hands, and center sweep seconds.

**MOVT:** Electric, stem-set, signed.

**C 3 D 3 M 3 R 7-1/2**

*Experts Opinion: Very clean specimen of a seldom offered time-piece! Oversized and very popular!*

**Price: \$600.00**

**53. Fancy Dial South Bend Man's Steel Wrist Watch**

*South Bend; Indiana/U. S.; Man's; Circa: 1930s*

**STYLE:** Length lug-to-lug 40mm, width 32mm without crown, thickness 9mm.

**CASE:** No. 2339703, The white base metal, tonneau shape dial features curved lugs, carved bezel, and snap back.

**DIAL:** Fancy dial displaying Arabic numerals, minute/5-minute track, Mercedes hands, and subsidiary seconds.

**MOVT:** Manual wind movement No. 679130 with 15 jewels, lever escapement, stem-set, and signed.

**C 3 D 3-44 M 3 R 7-1/2**

*Experts Opinion: U. S. made wrist watches are really collectible. South Bend's are one of the rarest. This jewel has a very fancy dial!*

**Price: \$525.00**



## 54. Unused Amazing Minerva Steel Pink Dial Chronograph Wrist Watch With Olive Pushers

Minerva; Swiss; Man's; Circa: 1940s

**STYLE:** Length lug-to-lug 40mm, width 35mm without crown, thickness 10mm.  
**CASE:** No. 497950, A white stainless, round shape case featuring curved lugs and a snap back.

**DIAL:** This rose/pink dial displays Roman numerals, minute/5-minute/1/5-second track, poker hands, subsidiary seconds, and 30-minute register.

**MOVT:** Manual wind, 17 jewel movement with lever escapement, stem-set.

C 2    D 2    M 2    R 8-1/2

*Experts Opinion:* Wow – We never see unused chronograph wrist watches anymore. This is a well respected maker and has the rare olive-shaped pushers. These watches will bring extraordinary prices in European auction!

**Price: \$975.00**

## 55. Exciting 3-Register (Two-Tone Dial) Swiss Gent's Steel Chronograph Wrist Watch

Swiss; Swiss; Man's; Circa: 1970s

**STYLE:** Length lug-to-lug 45mm, width 36mm without crown, thickness 10mm.

**CASE:** This white stainless, cushion shape case features oversized/curved lugs and a screw back.

**BAND:** Flexible.

**DIAL:** Black/silver, markers, tachymeter track, baton/radium hands, subsidiary seconds, 30-minute register/12-hour register.

**MOVT:** This manual wind, 17 jewel movement has a lever escapement, is stem-set and is unsigned.

C 3    D 3    M 3    R 7

*Experts Opinion:* Big, clean and well adjusted. Highly sought after 3-register chronograph!

**Price: \$500.00**

## 56. Rare 18K Pierce Square Button Chronograph With 60-Minute Register Gent's Wrist Watch

Pierce; Swiss; Man's; Circa: 1940s

**STYLE:** Length lug-to-lug 44mm, width 35mm without crown, thickness 10mm.

**CASE:** No. 94361, 18K rose-gold, round shape, curved lugs, snap back.

**BAND:** Alligator

**DIAL:** Off-white, Arabic numerals, telemeter track, baton hands, subsidiary seconds, 60-minute register.

**MOVT:** This manual wind, 17 jewel movement has a lever escapement, stem-set, signed.

C 3    D 3    M 3    R 7-1/2

*Experts Opinion:* Scarce to find in rose-gold and perfect original dial. A treasure of a watch!

**Price: \$1,525.00**

## 57. Extremely Rare 18K Massive Hinged Back Eberhard Single Button Chronograph With 30-Minute Register & Slide Activated Back Feature Wrist Watch

Eberhard; Swiss; Man's; Circa: 1940s

**STYLE:** Length lug-to-lug 48mm, width 40mm without crown, thickness 8mm.

**CASE:** No. 1021804, This 18K yellow gold, round shape case features oversized/curved lugs, a snap back, and is hinged.

**BAND:** Alligator

**DIAL:** Gold, Arabic numerals, telemeter track, baton hands, subsidiary seconds, slide hack feature, 30-minute register.

**MOVT:** This manual, 17 jewel movement with lever escapement is stem-set and signed.

C 3    D 3-7    M 3    R 9

*Experts Opinion:* Very heavy 18K case, original dial, crown and hands. This single button rarity has a slide activated hack features. This is one rare watch of extreme quality!

**Price: \$4,300.00**

## 58. Scarce 14K Bulova Black Dial Military Style Wrist Watch

Bulova; ;Swiss Unisex; Circa: 1944

**STYLE:** Length lug-to-lug 35mm, width 28mm without crown, thickness 7mm.

**CASE:** No. 9351, 14K yellow gold, round case featuring curved lugs and screw back.

**DIAL:** This black dial displays markers, minute/5-minute, spade hands, and subsidiary seconds.

**MOVT:** A manual wind, 21 jewel movement with lever escapement, stem-set, and signed.

C 3    D 3    M 3    R 7

*Experts Opinion:* "Presented in 1944" on back case – this is a Military look alike and very desirable!

**Price: \$475.00**

## 59. Attractive 14K Longines Diamond Dial White-Gold Watch

Longines; Swiss; Man's; Circa: 1950s

**STYLE:** Length lug-to-lug 38mm, width 33mm without crown, thickness 6mm.

**CASE:** 14K white gold, round shape case featuring curved lugs, engraved bezel and a snap back.

**DIAL:** This silver dial features 12 diamond markers, baton hands and subsidiary seconds.

**MOVT:** A manual wind, 17 jewel movement with lever escapement, stem-set and signed.

C 3    D 3    M 3    R 7

*Experts Opinion:* A sweet dress watch for the gent who wears that tux. Quite a fine purchase!

**Price: \$775.00**

## 60. 14K Fancy Knotted Engraved Black Dial Longines Unisex Rose-Gold Wrist Watch

Longines; Swiss; Unisex; Circa: 1950s

**STYLE:** Length lug-to-lug 38mm, width 30mm without crown, thickness 7mm.

**CASE:** No. 836072, REF. #222, This 14K rose-gold, round case features fancy knotted lugs and a snap back.

**DIAL:** Black dial displaying Arabic/markers, baton hands, and subsidiary seconds.

**MOVT:** This manual wind, 17 jewel movement with lever escapement, is stem-set and signed.

C 3    D 3    M 3    R 7

*Experts Opinion:* A beautiful black and pink watch. When this is on your wrist – people will notice!

**Price: \$675.00**

## 61. Scarce Benrus Steel Dial-O-Rama Gent's Wrist Watch

Benrus; Swiss; Man's; Circa: 1958

**STYLE:** Length lug-to-lug 40mm, width 33mm without crown, thickness 7mm.

**CASE:** No. 237517, This stainless, white base metal, round shape case features an oversized bezel, and snap back.

**DIAL:** This off-white dial displays Arabic numerals, minute, 5-minute, and is digital.

**MOVT:** Manual, 15 jewel, lever escapement, stem-set, signed.

C 3-7    D 3    M 3    R 7-1/2

*Experts Opinion:* Jump hour/wandering minute. These are usually non runners and non repairable. This very clean version is quite a find!

**Price: \$625.00**

## 62. Sensational Le Coultre Black Dial Futurematic Wrist Watch

Le Coultre; Swiss; Man's; Circa: 1950

**STYLE:** Length lug-to-lug 45mm, width 36mm without crown, thickness 10mm.

**CASE:** This rose gold-filled, round case features oversized/curved and a snap back.

**DIAL:** Handsome black dial displaying markers, minute/5-minute track, baton hands, subsidiary seconds, and power reserve.

**MOVT:** This automatic, 17 jewels movement with lever escapement is back-set and signed.

C 3    D 3    M 3    R 7-1/2

*Experts Opinion:* Always one of my favorites! The black dial Futurematic has a great look – pink & black!

**Price: \$775.00**

## 63. Infrequent 18K Gold Omega Constellation Wrist Watch With Date & Original Buckle

Omega; Swiss; Man's; Circa: 1961

**STYLE:** Length lug-to-lug 43mm, width 34mm without crown, thickness 7mm.

**CASE:** No. 14393/94, REF. #562, The 18K yellow gold, round shape case features curved lugs and a screw back.

**BAND:** Standard leather, original Omega plated buckle.

**DIAL:** A gold dial displaying markers, minute/5-minute track, baton hands and date windows.

**MOVT:** This Automatic, 24 jewel movement features lever escapement, is stem-set and signed.

C 3    D 3    M 3    R 8

*Experts Opinion:* This watch is a great seller in European auctions. 18K models are very scare and have a great upside for the future!

**Price: \$1,775.00**



**64. Very Stylish 14K Blue & Gold Dialed Longines Man's Square Wrist Watch With Enameled & Number Bezel**

*Longines; Swiss; Man's; Circa: 1967*

**STYLE:** Length lug-to-lug mm, width mm without crown.

**CASE:** No. 721936, REF. #6038, This 14K yellow gold, square shape case featuring curved lugs, enamel numbered bezel and snap back.

**BAND:** Standard leather, Longines band & buckle.

**DIAL:** A gold & blue dial displaying Roman/markers and baton hands.

**MOV'T:** Manual, No. 14615895, 17 jewel, lever escapement, stem-set, signed.

**C 3 | D 3 | M 3 | R 7**

*Experts Opinion: Scarce due to the unusual styled bezel and exceptional dial. A real looker!*

**Price: \$775.00**

**65. Good Looking 18K Gold Hinged Back Rectangular Rose Colored Wrist Watch With Engraved Bezel & Lugs**

*Swiss; Swiss; Man's; Circa:1930s*

**STYLE:** Length lug-to-lug 36mm, width 25mm without crown, thickness 6mm.

**CASE:** No. 10102, This 18K yellow/rose-gold, rectangular shape case features carved lugs, carved bezel, snap back, and is hinged.

**DIAL:** Silver, Arabic numerals, minute/5-minute track, Scotties, subsidiary seconds.

**MOV'T:** This manual wind, 15 jewel movement with lever escapement is stem-set and unsigned.

**C 3 | D 3-28 | M 3 | R 7-1/2**

*Experts Opinion: These early wrist watches are one of the bargains in the watch collection field!*

**Price: \$1,025.00**

**66. 14K Yellow Gold Rolex Gent's Bubbleback Wrist Watch With Scarce Index Bezel**

*Rolex; Swiss; Man's; Circa: 1940s*

**STYLE:** Length lug-to-lug 40mm, width 32mm without crown, thickness 9mm.

**CASE:** This 14K yellow gold, tonneau shape case features curved lugs, indexed bezel and a screw back.

**DIAL:** An off-white dial displaying Arabic/Roman numerals, minute/5-minute/1/5-second track, radium hands, and center sweep.

**MOV'T:** This Automatic, 18 jewel movement with lever escapement is stem-set and signed.

**C 3 | D 3-30 | M 3 | R 8**

*Experts Opinion: A very attractive Rolex bubble back in 14K gold. Great investment and a great watch to wear!*

**Price: \$4,050.00**

**67. Extraordinary 18K Rolex Massive DateJust Wrist Watch With Diamond Chevrolet Dial – Chevrolet Diamond Jubilee 1911-1986.**

*Rolex; Swiss; Man's; Circa: 1986*

**STYLE:** Length lug-to-lug 45mm, width 36mm without crown, thickness 10mm.

**CASE:** No. 9573420, REF. #16000, This 18K yellow gold round shape case features oversized/curved lugs, reeded bezel and a screw back.

**BAND:** Flexible, deployment buckle, 18K band and buckle by Rolex, T. W. 87.3 dwts.

**DIAL:** This gold dial displays diamonds and features a Chevrolet tapestry. Also displayed are markers, baton/radium hands, center sweep, and date windows.

**MOV'T:** This Automatic, 27 jewel movement with lever escapement is stem-set, and signed.

**C 3 | D 3 | M 3 | R 8-1/2**

*Experts Opinion: Dial patterned with Chevy logo. Diamond markers from Rolex, 87.3 dwts.! This is one amazing watch!*

**Price: \$6,550.00**

**68. Outstanding Rich 18K Pink Gold Oversized Vacheron & Constantin Man's Wrist Watch**

*Vacheron & Constantin; Swiss; Man's; Circa: 1942*

**STYLE:** Length lug-to-lug 40mm, width 35.5mm without crown, thickness 6mm.

**CASE:** No. 292097, REF. #P463/3C, Movt. 453855, 18K pink-gold, round shape case featuring tear drop/curved lugs, plain bezel and snap back.

**DIAL:** Gold, Roman/markers, minute/5-minute track, baton hands, subsidiary seconds.

**MOV'T:** Manual wind, 17 jewel movement with lever escapement, stem-set, and triple signed.

**C 3 | D 3-28 | M 3 | R 8-1/2**

*Experts Opinion: Oversized pink 18K Vacheron & Constantin gold dial – pink numerals and pink solid gold hands – vintage 40's beauty. This will sell quickly!*

**Price: \$5,550.00**

**69. Remarkable Lady's Platinum & Diamond Rectangular Wrist Watch With Extract From The Archives Copy**

*Patek Philippe; Swiss; Lady's; Circa: 1956*

**STYLE:** Length lug-to-lug 25mm, width 15mm without crown, thickness 5mm.

**CASE:** No. 690345, REF. #3128, white platinum, rectangular shape, curved lugs, diamond bezel, snap back.

**BAND:** Alligator

**DIAL:** Silver dial displaying Arabic/markers and baton hands.

**MOV'T:** Manual, 18 jewel, lever escapement, stem-set, signed.

**C 3 | D 3 | M 3 | R 8**

*Experts Opinion: Lady's platinum rectangulars are very rare and this one has a diamond trim – wow!*

**Price: \$4,800.00**

**70. Extra-Rare 3/4-Size Screw Back Patek Philippe Calatrava Wrist Watch With Original Band, Buckle, Box & Papers**

*Patek Philippe; Swiss; Man's; Circa: 1955*

**STYLE:** Length lug-to-lug 38mm, width 30.75mm without crown, thickness 7mm.

**CASE:** No. 687736, REF. #2451, Movt. 744001, 18K yellow gold, round shape, curved lugs, plain, screw back with dust cover inside.

**BAND:** Standard leather, "Patek" signed band & 18K buckle.

**DIAL:** Silver dial displaying markers, minute/5-minute track, baton hands, and subsidiary seconds.

**MOV'T:** Manual, 18 jewel with lever escapement, stem-set, signed.

**C 3 | D 3 | M 3 | R 8**

*Experts Opinion: Maroon Patek Philippe square box & Patek Archives papers. A very scarce screw back waterproof, Patek Philippe manual wind with Patek Philippe Lizard strap, signed case, dial, movement and 18K Patek Philippe buckle, Patek Philippe box, Patek Philippe extract papers, vintage 50's! A real discovery for the Patek Philippe collectors!*

**Price: \$7,800.00**



#64

#65

#66

#67  
Dial

#66  
Side

#67



Also on  
Back Cover

#68

#69

Model  
Calibre :

Case No :  
Style :  
Type :

Also on  
Front Cover

#70

With  
Box & Cert.



**ASHLAND**  
continues to be a  
major buyer...

in the field of horology and vertu with extreme purchasing power. Please give ASHLAND the opportunity to make an offer on your valued collection when the time comes to liquidate your investment.

- \* Informative Articles
- \* Market Updates
- \* Calendar of Events
- \* Appraisals
- \* Authentication Service
- \* And Much More ...

**Now Live!**  
**Grand Opening of**



- \* Pocket Watch Sales
- \* Wristwatch Sales
- \* Jewelry Sales
- \* Auctions
- \* Accessories
- \* Ephemera

**Richard M. Gilbert**