

ASHLAND

A Catalog of Fine and Important Watches



#33

#70

Call Toll Free
1-800-424-5353

or call
1-941-957-3760

FAX
1-941-365-4931

SUITE 200, 640 SOUTH WASHINGTON BLVD. • SARASOTA, FL 34236-7137



ASHLAND

1-800-424-5353
OR
1-941-957-3760
FAX
1-941-365-4931

- A. Due to rapid sales, ordering by phone is recommended. Please ask for RICK GILBERT or JIM MILLER at
B. Please make checks or money orders payable to: ASHLAND.
We also accept Visa, MasterCard and American Express
C. ASHLAND offers a full seven (7) day return privilege on items improperly described.
D. Orders can be held for 45 days with a 20% non-refundable deposit.
E. Office Hours are 9 a.m. to 5 p.m., Monday through Friday.

Send all checks to: ASHLAND, Suite 200, 640 South Washington Blvd., Sarasota, FL 34236-7137; All Foreign orders should be paid by Bank Wire Transfer; Northern Trust Bank of Florida; ABA #066009650; Checking Account Number 718936; Credit to ASHLAND INVESTMENT

ASHLAND GRADING SYSTEM GUIDE

The lots described in this catalog have been carefully examined and valued by Ashland's experts and watch makers, taking into consideration the aesthetic, historical and technical interest, age and rarity, as well as the technology available at the time of production of each timepiece.

For such judgment to be as objective as possible, it must rest on a number of criteria, particularly with regards to the age of a lot. Indeed, a wrist watch of less than 50 years old cannot be judged with the same criteria as a Renaissance watch. This is the reason why some of the gradings will only qualify for certain types of watches and will never be used for others.

For example, if, as a general rule, watches can be attributed gradings from 1 to 4 for the case, the dial and the movement, watches of less than 100 years old can be given grading 1 (as new), 3 (in very good condition), or 4 (in good condition). The latter, (grading 4), will be followed by one or more grading numbers to justify why the lot cannot be considered "in very good condition". On the other hand, watches over 100 years old, of similar condition, would indeed be considered as "very good" because of their age and would therefore qualify for grading 3. Needless to say, watches over 100 years old, even the best state of conservation for their age, are unlikely to ever be considered "as new" and would therefore never be eligible for grading 1; for this reason, we have introduced grading 2 (in perfect condition).

At the end of each lot description, before the description, you will find a condition report box, with letters and numbers, divided into 4 sections: these are the grades given to the lot with reference to the condition of its case, its dial and hands, its movement, and its rarity level-if applicable.

To understand the grades shown in the condition report box, consult the Grading System as follows:

C for the case, followed by one or more numbers = condition of case.

D for the dial (& hands), followed by one or more numbers = condition of dial & hands.

M for the movement, followed by one or more numbers = condition of movement.

Next to this condition report box, is an experts rarity box featuring one number from 1-10 as an overall rarity grade.

See example below:

| | | | |
|------------|---------------|------------|------------|
| C 1 | D 1-01 | M 1 | R 4 |
|------------|---------------|------------|------------|

Case: as new Dial: as new - original hands Movement: as new Rarity Grade

GUIDE TO GRADING

| | | | | |
|------------|--------------------------|---------------|----------|----------|
| 1 : as new | 2 : in perfect condition | 3 : very good | 4 : good | 5 : fair |
|------------|--------------------------|---------------|----------|----------|

| C CASE | ENAMEL AND VARIOUS TYPES OF DECORATION | D DIAL (cont.) | HANDS | RARITY GRADE |
|---------------------------------|--|---|----------------------------------|---|
| DETAILS | | | | |
| 6 patinated | 54 very worn | 25 partly rubbed | 01 original | A select group of watches in this catalog have been assigned a "rarity grade" which will appear in the description heading. The total production number of U. S. made pocket watches and vintage wrist watches are fairly well known and accessible, unlike the large and more varied output of European makers and of early horological examples. Therefore, this simplified 1 thru 10 numerical grade is designed to assist collectors and investors in determining the scarcity of a given timepiece in today's market (#1 is considered common to #10, which is an extremely rare item). The following factors are the basis of assigned rarity levels: (c) Historical importance. (d) Condition in relationship to other examples of similar type. (e) Artistic case design, I.e. enamel, unusual shape or form pieces. (f) Low survival rate of similar types. (g) Investment potential for increase in demand and price. A rarity grade will be assigned to highlight items which offer strong investment potential (generally items of level 5 thru 10). |
| 7 slightly oxidized | 55 very slightly chipped | 26 very well reprinted by the manufacturer | 02 replaced by the manufacturer | |
| 8 oxidized | 56 chipped | 27 partially reprinted | 03 later original | |
| 9 slightly scratched | 57 damaged | 28 very well reprinted | 04 partially replaced | |
| 10 scratched | 58 very damaged | 29 well reprinted | 05 period | |
| 11 deeply scratched | 59 slight restoration(hard enamel) | 30 reprinted | 06 later | |
| 12 a dent | 60 restored (hard enamel) | 31 luminous reprinted | 07 repaired | |
| 13 2 dents | 61 slight restoration (soft enamel) | 32 alterations | 08 damaged | |
| 14 multiple dents | 62 restored (soft enamel) | 33 period, original | 09 new luminous | |
| 15 slightly worn | 63 period original | 34 later original | | |
| 16 worn | 64 later original | 35 period | M MOVEMENT | |
| 17 very worn | 65 period | 36 later | DETAILS | |
| 18 repolished edges preserved | 66 later | 37 custom-made | 6 patinated | |
| 19 repolished edges altered | 67 custom-made | 38 to be restored | 7 slightly oxidized | |
| 20 back threading damaged | 68 to be restored | | 8 oxidized | |
| 21 period original | 69 pearl missing | ENAMEL DIAL DETAILS | 9 slightly scratched | |
| 22 later original | 70 pearls missing | 39 slightly oxidized | 10 scratched | |
| 23 period | 71 paste stone missing | 40 slightly scratched | 11 plating slightly deteriorated | |
| 24 later | 72 paste stones missing | 41 scratched | 12 plating deteriorated | |
| 25 custom-made | 73 precious stone missing | 42 deeply scratched | 13 rusted | |
| 26 replacements | 74 precious stones missing | 43 hairline | 14 a dent | |
| 27 lacking elements | 75 outer over glaze | 44 two hairlines | 15 dents | |
| 28 transformations | | 45 multiple hairlines | 16 replacements | |
| 29 alterations | D DIAL | 46 chips(s) or hairline(s) under bezel, not visible when closed | 17 lacking elements | |
| 30 damaged | METALLIC DIAL DETAILS | 47 hairline, subsidiary dial | 18 later escapement | |
| 31 very damaged | 6 patinated | 48 hairlines, subsidiary dial | 19 upgraded | |
| 32 restored by the manufacturer | 7 slightly oxidized | 49 chipped subsidiary dial | 20 later balance | |
| 33 slightly restored | 8 oxidized | 50 hairline(s) barely visible | 21 transformations | |
| 34 restorations | 9 slightly scratched | 51 slightly worn | 22 alterations | |
| 35 worn pushpiece | 10 scratched | 52 worn | 23 damaged | |
| 36 worn pushpieces | 11 deeply scratched | 53 very slightly chipped | 24 very damaged | |
| 37 replaced pushpieces | 12 a dent | 54 chipped, winding aperture | 25 restored by the manufacturer | |
| 38 later original crown | 13 2 dents | 55 chipped | 26 slightly restored | |
| 39 period crown | 14 multiple dents | 56 damaged | 27 restorations | |
| 40 to be restored | 15 spotted | 57 slightly restored | 28 inscription rubbed | |
| 41 partially re-gilt | 16 slightly worn | 58 restored by the manufacturer | 29 re-rhodiated | |
| 42 re-gilt | 17 worn | 59 restorations | 30 re-gilt | |
| 43 bow replaced | 18 very worn | 60 soft overglazed | 31 period, original | |
| 44 hinge worn | 19 damaged | 61 partly rubbed | 32 later original | |
| 45 hinge restored | 20 refreshed | 62 alterations | 33 period | |
| 46 renumbered | 21 soft over glazed | 63 period, original | 34 later | |
| 47 hairline | 22 slightly restored | 64 later original | 35 custom-made | |
| 48 2 hairlines | 23 restored by the manufacturer | 65 period | 36 to be overhauled | |
| 49 multiple hairlines | 24 restorations | 66 later | 37 to be restored | |
| 50 slightly scratched | | 67 custom-made | - a. cleaned | |
| 51 scratched | | 68 to be restored | - b. minor | |
| 52 slightly worn | | | - c. major | |
| 53 worn | | | - d. broken staff | |
| | | | * overhaul recommended | |
| | | | (at buyer's expense) | |
| | | | ** overhaul required | |
| | | | (at buyer's expense) | |



1. Lovely 18K Gold Diamond Overlay Lady's Miniature Hunters Case Pocket Watch

Swiss; Lady's; Serial # 2381; Circa: 1895
CASE: No. 99753, 28mm, This miniature 18K yellow gold hunter case, features floral/barleycorn/geometric with diamond- studded wreath.
DIAL: This off white, single sunk dial displays Arabic numerals with Breguet hands, signed "P. Diath."
MOVT: This 17 jewel, stem set movement features a lever escapement, nickel, bridge, unsigned.

| | | | |
|-------|-----|-----|---------|
| C 3-6 | D 3 | M 3 | R 6-1/2 |
|-------|-----|-----|---------|

Experts Opinion: Delicate and very beautiful! A great gift for that special lady!
Price: \$925.00

2. Absolutely The Deepest Embossed Overlay 14K Waltham Dragon/Snake Lady's Lapel Watch & Pin

Waltham; Lady's; Serial # 10516705; Circa: 1901
CASE: No. 306103; Measuring 32mm, this 0 size, open face case is 14K yellow gold. Unbelievable scene of a dragon in fight with a snake!
DIAL: White porcelain dial displaying Arabic numerals, filigree hands, signed "Waltham."
MOVT: 15 Jewel, stem-set, No. 10516705, lever escapement, nickel, 3/4-plate, signed.

| | | | |
|-----|-----|-----|-----|
| C 2 | D 2 | M 2 | R 8 |
|-----|-----|-----|-----|

Experts Opinion: Gold-filled snake watch pin. No one will wear this watch and not be asked about it. Exceptional work by a case master - just spectacular!
Price: \$3,000.00

3. Scarce 18K Gold 14 Size E. Gubelin Open Face Watch

E. Gubelin (Lucerne) Swiss; Man's; Serial #19173; Circa: 1902
CASE: No. 19173; This 14 Size, open face case measures 47mm and is made of 18K yellow gold. The plain case with scroll monogram is signed "E. Gubelin, Lucerne."
DIAL: This gold tone metal/single sunk dial displays Arabic numerals with Breguet hands & signed "E. Gubelin, Lucerne."
MOVT: 16 Jewel, stem-set, No. 19173, lever escapement, nickel, bridge style, unsigned.

| | | | |
|-----|-------|-----|-----|
| C 3 | D 3-9 | M 3 | R 7 |
|-----|-------|-----|-----|

Experts Opinion: Heavy gold case, 63 grams (TW). A real bargain for a top quality watch!
Price: \$1,000.00

4. Rarely Seen 18K Rolex Unisex Demi-Hunter Pocket Watch

Rolex; Unisex; Serial # 721156; Circa: 1932
CASE: No. 1001114, 12 size, 45mm, demi-hunter, 18K, yellow. Enamel chapter on front lid, scroll monogram on rear lid, signed "Rolex."
DIAL: This white porcelain single sunk dial displays Arabic numerals, spade hands.
MOVT: This 17 jewel, stem set movement features a 5 adjustments, heat/cold, lever escapement, nickel, bridge style, signed "Rolex."

| | | | |
|-----|-----|-----|---------|
| C 3 | D 2 | M 2 | R 7-1/2 |
|-----|-----|-----|---------|

Experts Opinion: Nice 18K Rolex for the non wrist watch wearer. This is a sweet and clean timepiece! Presented in 1932!
Price: \$3,050.00

5. 18K White Gold & Black Enamel Art Deco Vacheron & Constantin Made For & Sold By Verger, France

Vacheron & Constantin; Swiss; Serial #396251; Circa: 1920
CASE: No. 8181; This open face, 12 size case measures 42mm. Made of 18K white gold and featuring outer rim in black enamel and signed "Verger, France."

DIAL: Silver, metal, Arabic numerals, Breguet hands, signed "Vacheron & Constantin, Geneva."
MOVT: 18 Jewel, stem-set, No. 396251, 8 adjustments, lever escapement, nickel, bridge style, signed.

| | | | |
|-----|-----|-------|-----|
| C 2 | D 2 | M 2-6 | R 8 |
|-----|-----|-------|-----|

Experts Opinion: A very rare and highly sought after Deco pocket watch, Vacheron & Constantin for Verger! An excellent combination!

Price: \$5,050.00

6. Extraordinary 18K "Quality One" Lange & Sohne, Nickel & Highly Polished Movement, Massive 18K Hunters Case Pocket Watch

Lange (Glashutte, Dresden, Germany); Serial# 17840; C. 1890
CASE: No. 17840, 18 size, 52mm, 18K yellow gold hunter case, plain with monogram on the front cover.

DIAL: White porcelain single sunk dial, Roman numerals with spade hands, signed "A. Lange & Sohne."
MOVT: 18 Jewel, lever-set, No. 17840, lever escapement, nickel, full plate, signed and highly damaskeened.

| | | | |
|-----|-----|-----|-----|
| C 3 | D 3 | M 2 | R 9 |
|-----|-----|-----|-----|

Experts Opinion: 132 grams (TW). The highest grade Lange we have had in many years. Act fast or it will sell in Germany!

Price: \$7,050.00

7. Steel Gallet Chronograph W/30-Minute Register Watch

Gallet (Swiss); Man's; Serial # 734280; Circa: 1905
CASE: No. 734280, 16 Size, open face, stainless, plain. **DIAL:** This white porcelain single sunk dial displays Arabic numerals, spade hands, signed "Gallet."

MOVT: This 17 jewel, stem set movement features a No. 734280, lever escapement, nickel, bridge style, signed.

| | | | |
|--------|--------|-------|-----|
| C 3-10 | D 3-59 | M 3-6 | R 6 |
|--------|--------|-------|-----|

Experts Opinion: Chronograph for daily use or your collection. Gallet is a good maker, well known for his Chrono's!

Price: \$575.00

8. Very Rare Miniature Movado Sterling Purse Watch

Movado (Swiss); Unisex; Serial # 4115; Circa: 1940
CASE: No. 4115, oversized 44 x 25mm, purse watch, sterling silver, and black cloth outer covering, signed "Movado Factories."

DIAL: Off-white, metal dial displaying Arabic numerals with poker/Breguet style hands and signed "Chronograph Movado."

MOVT: 17 Jewel, lever escapement, nickel, 3/4-plate, signed.

| | | | |
|-----|-----|-----|-----|
| C 3 | D 3 | M 3 | R 7 |
|-----|-----|-----|-----|

Experts Opinion: Winds when opened and closed. Very collectible and quite scarce in a miniature!

Price: \$500.00

9. I Love This Watch! Unique Silver Person Carrier Watch

(I do not know what you call this carrier) Swiss; Unisex; C. 1905
CASE: 65 x 35 x 27mm, open face, coin silver, .875 fine, and floral/machined/repousse/fully decorated.
DIAL: Fancy porcelain dial with yellow & green-gold trims displaying Arabic numerals and Breguet hands.

MOVT: 17 Jewel, pin-set, lever escapement, nickel, bridge style, signed.

| | | | |
|-----|-----|-----|---------|
| C 3 | D 3 | M 3 | R 8-1/2 |
|-----|-----|-----|---------|

Experts Opinion: I've seen many unusual timepieces but this beauty takes the cake. A unique watch for the true collector!

Price: \$2,200.00

10. Adorable 14K Gold Direct Read Digital Lady's Demi-Hunter Pocket Watch

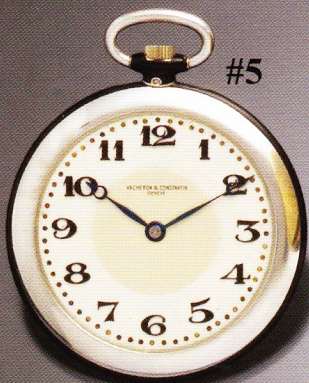
Colibri (Swiss); Lady's; Serial # 44268; Circa: 1885
CASE: No. 44268; Measuring 36mm this 6 size, demi-hunter case is 14K rose-gold and features plain/floral/geometric decorations and star patterns. The dial is signed "Colibri."

DIAL: This silver metal, direct read dial displays Arabic numerals with digital hands and is signed "Patent."
MOVT: 15 Jewel, pin-set, No. 44268, cylinder escapement, gilt, bridge style, unsigned.

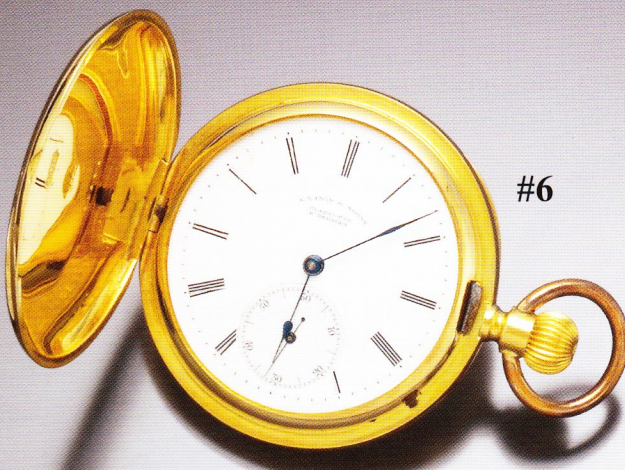
| | | | |
|-----|-------|-----|---------|
| C 3 | D 3-6 | M 2 | R 8-1/2 |
|-----|-------|-----|---------|

Experts Opinion: Never owned one of these before, usually full sized. This small one is certainly a rarity and in gold to boot!

Price: \$1,900.00



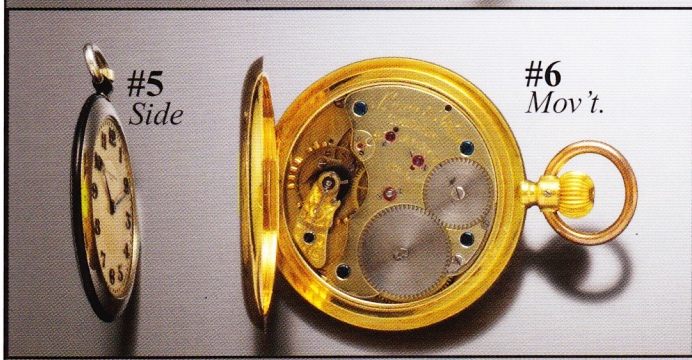
#5



#6



#7



#5
Side

#6
Mov't.



#8



#9



#9



#10

11. 12 Size Niello 17 Jewel Longines Hunters Case Pocket Watch In Amazing Condition

Longines (Swiss); Unisex; Serial # 3935647; Circa: 1895

CASE: No. 3935647, 12 size, 43mm, hunter case, coin silver, .900 fine, rose/black, floral/enamel, Niello & rose-gold.

DIAL: Gold, metal, Arabic numerals, Breguet hands, signed "Longines."

MOVT: This 17 jewel, stem set movement features a No. 3935647, lever escapement, gilt, bridge style, signed.

| | | | |
|--------|--------|-----|-----|
| C 2-55 | D 2-28 | M 2 | R 8 |
|--------|--------|-----|-----|

Experts Opinion: Case and movement numbers match on this wonderful niello. These are very rare and exceptionally beautiful in near perfect condition!

Price: \$450.00

12. Large Gent's Open Face Longines Exceptional Three-Color Niello Pocket Watch Scene Signed "Huegenin"

Longines (Swiss); Man's; Serial # 2075208; Circa: 1900

CASE: 16 Size, 45mm, open face, coin silver/.900, rose/black & silver, rose, floral/enamel, niello signed,

DIAL: This white porcelain single sunk dial displays Arabic numerals, spade/Breguet hands, signed "Longines."

MOVT: 15 Jewel, pin-set, No. 2075208, lever escapement, gilt, 3/4-plate, signed.

| | | | |
|-------|-----|-------|-----|
| C 3-9 | D 3 | M 3-7 | R 7 |
|-------|-----|-------|-----|

Experts Opinion: Rare to find a signed Niello in this superior condition. Well under valued, these Niello's offer an excellent investment upside!

Price: \$500.00

13. Very Rare Gun Metal Hidden Erotic Automation Pocket Watch In Extraordinary Condition

Swiss; Man's; Circa: 1895

CASE: No. 14972, 18 size, 55mm, open face, gun metal, black and blue. Automated erotic bedroom scene in gold & silver.

DIAL: White porcelain dial displaying Roman numerals, filigree hands.

MOVT: 15 Jewel, pin-set, cylinder escapement, gilt, bridge style, unsigned.

| | | | |
|-----|-----|-----|---------|
| C 3 | D 2 | M 2 | R 8-1/2 |
|-----|-----|-----|---------|

Experts Opinion: Erotic scene is wound by opening and closing the secret back dust cover. A wonderful bedroom scene is hidden from view when examined. When hidden dust cover is opened, an automated scene starts its action. What goes on behind closed doors stays behind closed doors.

Price: \$4,800.00

14. Collectible U. S. 1898s \$20.00 Gold Coin W/Hidden Ultra-Thin Agassiz movement Pocket Watch W/Gold Chain

Agassiz (Swiss); Unisex; Circa: 1910

CASE: 10 Size, 33mm, hunter case, 22K yellow, U. S. \$20.00 gold coin.

DIAL: This gold tone dial displays Roman numerals with baton hands.

MOVT: This 17 jewel, stem set movement features a lever escapement, nickel, bridge style, signed.

| | | | |
|-----|--------|-----|---------|
| C 3 | D 3-15 | M 3 | R 7-1/2 |
|-----|--------|-----|---------|

Experts Opinion: U. S. \$20.00 gold coin, hollowed out to fit an ultra-thin Agassiz hinged movement. A hidden pusher at 3 o'clock, on the reeded edge, opens this little treasure!

Price: \$2,550.00

15. Scarce Abbott Watch Company Made By Howard (Keystone) Man's Open Face Pocket Watch

Abbott, Howard; Man's; Serial # 981117; Circa: 1910

CASE: No. 981117, 16 size, open face/hunter case, yellow gold filled, floral/machined decorations, signed "Keystone."

DIAL: This white porcelain, double sunk dial displays Roman numerals with spade hands.

MOVT: This 17 jewel, stem set movement features a No. 981117, lever escapement, nickel, 3/4-plate, signed.

| | | | |
|-----|-----|-----|---------|
| C 3 | D 3 | M 3 | R 7-1/2 |
|-----|-----|-----|---------|

Experts Opinion: Hard-to-find American watch in excellent condition!

Price: \$400.00

16. Infrequent Six-Spoke Waterbury Skeletonized Long Wind Rotary Movement Man's Pocket Watch

(Two Stars) Waterbury (Conn.); Man's; Circa: 1880

CASE: This is a base metal, 18 Size, open face case.

DIAL: Off-white, paper type, Roman numerals, baton hands.

MOVT: Hand, duplex escapement, gilt, skeleton, unsigned.

| | | | |
|-------|--------|-----|---------|
| C 3-7 | D 3-16 | M 3 | R 7-1/2 |
|-------|--------|-----|---------|

Experts Opinion: A two star rarity! Series A, rotary long wind, skeletonized, movement revolves once every hour.

Price: \$675.00



17. Excellent Example Of A New England Skeleton Gent's Pocket Watch

New England (Conn.); Man's; Circa: 1900

CASE: 16 Size, open face, nickel, plain.

DIAL: Gold tone metal dial displays Arabic numerals and spade hands.

MOVT: Stem-set, duplex escapement, gilt, skeletonized, signed "N. E. W. Co."

| | | | |
|-----|-----|-------|-----|
| C 3 | D 2 | M 3-6 | R 7 |
|-----|-----|-------|-----|

Experts Opinion: One star watch in exceptional condition - a rare find for the true collector! Push crown in to set the watch.

Price: \$750.00

18. 18 Size 17 Jewel Ball 999 Pocket Watch By Hamilton

Signed "Ball & Co." Ball & Co. (Pa.); Man's; Serial # 14547; Circa: 1896

CASE: No. 830479, 18 size, open face, yellow gold filled, floral decorations, signed "R & S Co."

DIAL: This white porcelain single sunk dial displays Arabic numerals, spade hands, signed "Ball & Co. Official R R Standard."

MOVT: 17 Jewel, lever-set, No. 14547, lever escapement, nickel, full plate, signed "Official Railroad Standard."

| | | | |
|--------|-----------|-----|-----|
| C 3-15 | D 3-44-55 | M 3 | R 7 |
|--------|-----------|-----|-----|

Experts Opinion: These Ball & Co. signed watches are much scarcer and earlier than the Ball Watch Co. version. We have not offered one of these rarities in a long while!

Price: \$500.00

19. 18 Size 23 Jewel Hampden New Railway Man's Gold-Filled Hunters Cased Railroad Pocket Watch

Hampden (Ohio); Man's; Serial # 1056222; Circa: 1887

CASE: No. 539149, 18 size, hunter case, gold plated, rose, floral & swirl decorations.

DIAL: This white porcelain, double sunk dial displays Arabic numerals, spade hands, signed "Hampden Watch Co."

MOVT: 23 Jewel, lever-set, No. 1056222, 5 adjustments, lever escapement, nickel, full plate, signed.

| | | | |
|-----|-----|-----|-----|
| C 3 | D 3 | M 3 | R 7 |
|-----|-----|-----|-----|

Experts Opinion: It's nice to see such a clean railroad hunters case! Usually they show a lot of wear!

Price: \$625.00

20. Illustrious 24 Jewel Illinois Bunn Special 18 Size Railroad Pocket Watch

Illinois; Man's; Serial # 1836299; Circa: 1905

CASE: No. 800052, 18 size, open face/swing out, yellow gold filled, machined/geometric decorations, signed "C. W. C. Co."

DIAL: This white porcelain, double sunk dial displays Arabic numerals, spade hands, signed "Illinois Watch Co."

MOVT: 24 Jewel, lever-set, No. 1836299, heat/cold, 6 positions, lever escapement, nickel, full plate and signed.

| | | | |
|--------|-----|-----|-----|
| C 2-12 | D 2 | M 2 | R 7 |
|--------|-----|-----|-----|

Experts Opinion: A 24 jewel Bunn in absolutely great condition!

Price: \$1,625.00

21. Extremely Fine 17 Jewel Hampden New Railway Gold-Filled Hunters Case Watch W/Perfect Multi-Colored Fancy Dial

Hampden (Ohio); Man's; Serial # 882613; Circa: 1893

CASE: No. 2860601, 18 Size, yellow gold filled hunter's case with floral/geometric/stag decorations. Fancy monogram on front lid, signed "Dueber."

DIAL: Fancy, porcelain/single sunk, Arabic numerals, filigree hands.

MOVT: 17 Jewel, lever-set, No. 882613, 5 adjustments, lever escapement, nickel, 3/4-plate, signed.

| | | | |
|-----|-----|-------|-----|
| C 2 | D 2 | M 3-7 | R 7 |
|-----|-----|-------|-----|

Experts Opinion: You do not see perfect fancy dials anymore. This is an extremely nice watch for the selective customer!

Price: \$825.00

22. Unused 18K & Enamel Unisex Hunter Case Swiss Keywind Pocket Watch

Donat (Swiss); Unisex; Serial # 22608; Circa: 1885

CASE: No. 22608, 10 size, 42mm, 18K yellow gold hunter case, barleycorn/enamel decorations and signed "Donat."

DIAL: White porcelain dial displaying Roman numerals, filigree hands.

MOVT: 16 Jewel, keyset, No. 22608, lever escapement, nickel, bridge style, unsigned.

| | | | |
|-----|-----|-----|-----|
| C 2 | D 2 | M 2 | R 7 |
|-----|-----|-----|-----|

Experts Opinion: These are all being melted for the gold and in our near future will increase in value substantially. You won't find a nicer one!

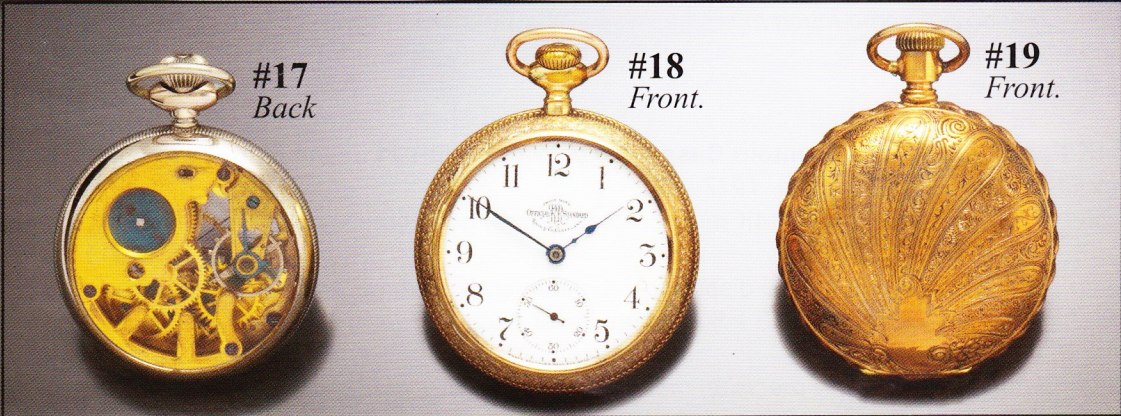
Price: \$1,000.00



#17

#18

#19



#17
Back

#18
Front.

#19
Front.

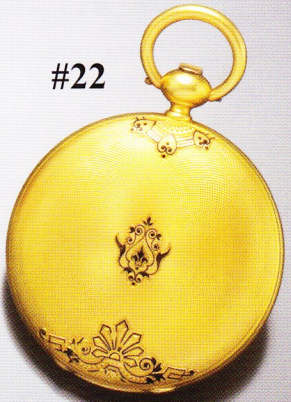


#20

#21
Dial



#21
Back



#22

23. Super Clean 12 Size 14K Unisex Fully Engraved Hunters Case Waltham Pocket Watch

Waltham (Mass.); Unisex; Serial # 20925630; Circa: 1917

CASE: No. 5690943, 12 size, hunter case, 14K yellow gold, floral/machined decorations, signed "Keystone."

DIAL: White porcelain single sunk dial, Roman numerals with spade hands, signed "Waltham."

MOVT: 15 Jewel, stem-set, No. 20925630, lever escapement, nickel, 3/4-plate, signed.

| | | | |
|-----|-----|-----|-----|
| C 2 | D 2 | M 2 | R 7 |
|-----|-----|-----|-----|

Experts Opinion: Front fancy monogram on the lid, just perfect in all areas. Sweet!

Price: \$875.00

24. Unused 16 Size 14K Waltham Gent's Hunters Case Pocket Watch

Waltham (Mass.); Man's; Serial # 20282514; Circa: 1915

CASE: No. 5515516, 16 size, hunter case, 14K yellow gold, floral/machined decorations, signed "Keystone."

DIAL: This white porcelain single sunk dial displays Arabic numerals, spade hands, signed "Waltham."

MOVT: 15 Jewel, stem-set, No. 20282514, lever escapement, nickel, bridge style, signed.

| | | | |
|-----|-----|-----|-----|
| C 2 | D 2 | M 2 | R 7 |
|-----|-----|-----|-----|

Experts Opinion: They do not come much nicer than this. Scrappers are melting these watches as fast as they can. Investment future is promising!

Price: \$1,125.00

25. 12 Size 14K Five-Color Unisex Hunters Case Pocket Watch With 21 Jewel Illinois Movement

Illinois; Unisex; Serial # 3172825; Circa: 1917

CASE: No. 19468, 12 size, hunter case, 14K multi-color (5-colors) gold, floral/machined/geometric/stage decorations, signed "Roy."

DIAL: This white porcelain single sunk dial displays Arabic numerals, Breguet hands, signed "Illinois."

MOVT: 21 Jewel, stem-set, No. 3172825, 3 adjustments, lever escapement, nickel, 3/4-plate, signed.

| | | | |
|-----|--------|-----|-----|
| C 3 | D 3-44 | M 2 | R 7 |
|-----|--------|-----|-----|

Experts Opinion: Clean & sharp with a precision movement. Plenty of gold here!

Price: \$2,150.00

26. 18 Size 14K Box Hinge Elgin Gold Multi-Color (4-Color) Man's Pocket Watch

Elgin (Illinois); Man's; Serial # 15856173; Circa: 1910

CASE: No. 27749, 18 size, hunter case/box hinge, 14K multi-color gold, floral/machined/stage decorations, signed "Illinois Watch Case Co."

DIAL: This white porcelain single sunk dial displays Arabic numerals, spade hands, signed "Elgin."

MOVT: 15 Jewel, lever-set, No. 15,856,173, lever escapement, nickel, 3/4-plate, signed.

| | | | |
|--------|-----|-----|-----|
| C 3-15 | D 3 | M 3 | R 7 |
|--------|-----|-----|-----|

Experts Opinion: Heavy 92 dwts. (TW) box hinge, multi-color gold - can you want any more?

Price: \$3,900.00

27. 18K Sweet Lady's Verge Fusee Fancy Dial Pearl Enhanced Pocket Watch

Swiss; Lady's; Circa: 1730

CASE: 1 Size, 35mm, open face/swing-out style, 18K yellow gold, plain with pearl bezels on front & back.

DIAL: White/gold/fancy, porcelain dial displaying Arabic numerals and spade hands.

MOVT: Keyset, verge/fusee, gilt, full plate, unsigned.

| | | | |
|-----|--------|-----|-----|
| C 3 | D 3-57 | M 3 | R 7 |
|-----|--------|-----|-----|

Experts Opinion: Rare & sought after size verge with a fancy porcelain & gold dial. Will sell quickly!

Price: \$1,275.00

28. Gilt Verge Enamel Scened Fusee By Charles Le Roy Man's Pocket Watch & Key

Charles Le Roy (Paris, France); Man's; Circa: 1770

CASE: 18 Size, 52mm, open face, swing-out, rose gilt, enamel decorations and playing children.

DIAL: White porcelain dial displaying Arabic numerals, poker hands.

MOVT: Keyset, verge/fusee, gilt, full plate, signed.

| | | | |
|-----|--------|-----|-----|
| C 3 | D 3-59 | M 3 | R 8 |
|-----|--------|-----|-----|

Experts Opinion: One of the hottest watches on the market today, China is buying all enamels. This beauty will be purchased as quickly as it is seen!

Price: \$3,800.00



#23
Front



#24



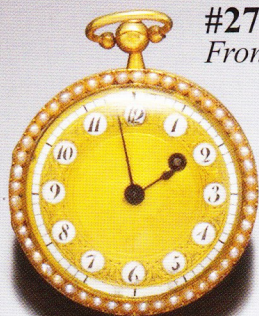
#23
Back



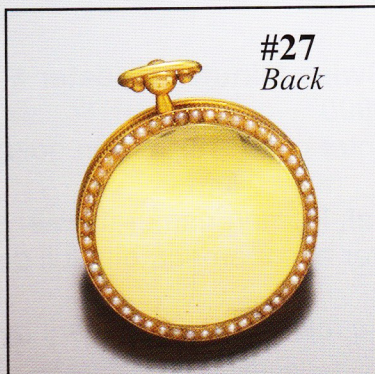
#25



#26



#27
Front



#27
Back



#28

29. Silver Gilt Repousse Verge Pair Case Man's Pocket Watch

Paul Litchfield (London, England); Man's; Serial # 964; Circa: 1794

CASE: 18 Size, 50mm, open face/pair case, sterling silver, gilt, yellow, repousse decorations, signed "H. B."

DIAL: White porcelain dial displaying Roman numerals, filigree hands.

MOVT: Keyset, verge/fusee, gilt, full plate, signed with fancy balance cock.

| | | | |
|-----|-----|-----|---------|
| C 3 | D 3 | M 3 | R 7-1/2 |
|-----|-----|-----|---------|

Experts Opinion: Another China bound item, all fusee's are quickly disappearing. Lets keep a few and this is a beauty.

Price: \$1,875.00

30. Very Rare 18K Gold Lepine/Gudin (Paris, France) Enamel With Diamonds Verge Early Fusee Miniature Lady's Pocket Watch

(Makers of Repute) Lepine/Gudin; Unisex; Serial # 10029; Circa: 1750

CASE: Miniature, 30mm, open face/swing-out, 18K rose gold, geometric with 4-colors of enamel and diamond basket overlay.

DIAL: White porcelain dial displaying Roman numerals, spade/Breguet hands, signed "Gudin, Paris."

MOVT: Keyset, verge/fusee, gilt, full plate, signed.

| | | | |
|-----|-----|-----|---------|
| C 2 | D 2 | M 2 | R 8-1/2 |
|-----|-----|-----|---------|

Experts Opinion: What a treat to offer an exquisite collectors miniature verge fusee in this condition. Amazing in design, color & quality. One of the nicest watches we have offered in many years. Lipine & Gudin have many watches in many museums all over the world. This has to be one of their prizes!

Price: \$8,800.00

31. Unique 18K Captains Time, Independent Seconds Two-Train Hunters Case Pocket Watch With U. S. Capital Building, Washington Engraved On Cover With Key

Sovoye & Son (Swiss); Man's; Serial # 1740; Circa: 1888

CASE: No. 1740, 18 size, 55mm, hunter case, 18K yellow gold, floral/machined/barleycorn/village. U. S. Capital, Washington & seaside scene, signed "S. & S. for Sovoye & Son."

DIAL: White porcelain dial displaying Roman numerals, spade/baton hands.

MOVT: 23 Jewel, keyset, No. 1,740, lever escapement, gilt, bridge style/2-train, unsigned.

| | | | |
|-----|-----|-----|-----|
| C 3 | D 3 | M 3 | R 9 |
|-----|-----|-----|-----|

Experts Opinion: A perfect and only one ever seen with the Washington U. S. Capital building. This is a museum watch with a spectacular movement!

Price: \$5,550.00

32. Super Clean Heavy 18K Gold Swiss Minute Repeater Man's Hunters Case Pocket Watch

Swiss; Man's; Serial # 17; Circa: 1890

CASE: 17 Jewel, 18 size, 55mm, hunter case, 18K green gold, plain with scroll monogram and signed "A. B."

DIAL: White porcelain single sunk dial, Roman numerals with spade hands.

MOVT: 26 Jewel, pin-set, No. 17, lever escapement, gilt, full plate, unsigned.

| | | | |
|-----|-----|-----|-----|
| C 2 | D 2 | M 2 | R 8 |
|-----|-----|-----|-----|

Experts Opinion: We have had quite a few minute repeaters over the years but his one beats most in condition. Wow - what a gem!

Price: \$6,500.00

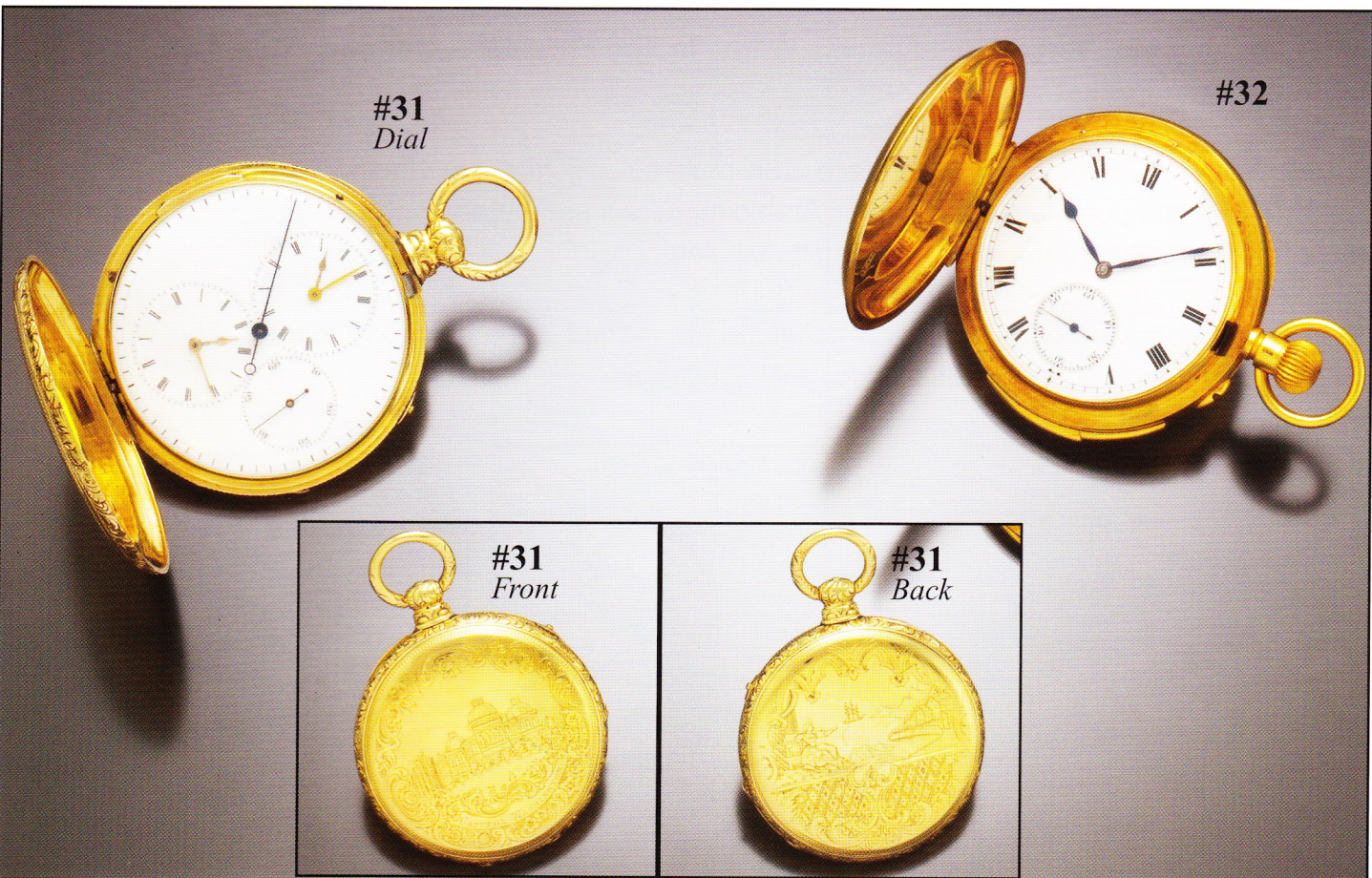


#29
Mov't.

#29
Back of Case

#30
Also on
Back Cover

#30
Mov't.



#31
Dial

#32

#31
Front

#31
Back

33. Spectacular Verge Fusee Enamel & Rock Crystal Viennese Gent's Pocket Watch With An Outstanding Champleve Enamel Dial

Raffard; Man's; Serial # 934; Circa: 1780

CASE: No. 934, oval rock crystal 35 x 45, open face, sterling silver, rock crystal, multi-color, floral decorations, multi-faceted rock crystal.

DIAL: Fancy, silver, Roman numerals, poker hands! An outstanding champleve enameled dial.

MOVT: Keyset, No. 934, verge escapement, gilt, full plate, signed.

| | | | |
|-----|-----|-----|-----|
| C 3 | D 2 | M 2 | R 9 |
|-----|-----|-----|-----|

Experts Opinion: The finest Viennese enamel, rock crystal we have ever owned! Every piece of crystal is multi-faceted, the dial is truly an amazing piece of work. The only thing I can say is E-gads!

Price: \$9,550.00

34. Admirable 18K Verge Fuse Fantasy Watch In The Form Of A Mandolin With Enamel & Diamond Trim Pocket Watch & Key

Swiss; Unisex; Serial # 1336; Circa: 1785

CASE: No. 1336, 60 x 26mm, open face, 18K multi-color gold, enamel/mandolin form.

DIAL: This white porcelain dial features Arabic numerals and baton hands.

MOVT: Keyset, No. 1336, verge/fusee, gilt, full plate.

| | | | |
|-----|-----|-----|-----|
| C 3 | D 3 | M 3 | R 9 |
|-----|-----|-----|-----|

Experts Opinion: One of the hottest watches on the market is the gold form fusee's. This is in perfect condition and very rarely offered for sale. Call now!

Price: \$10,550.00



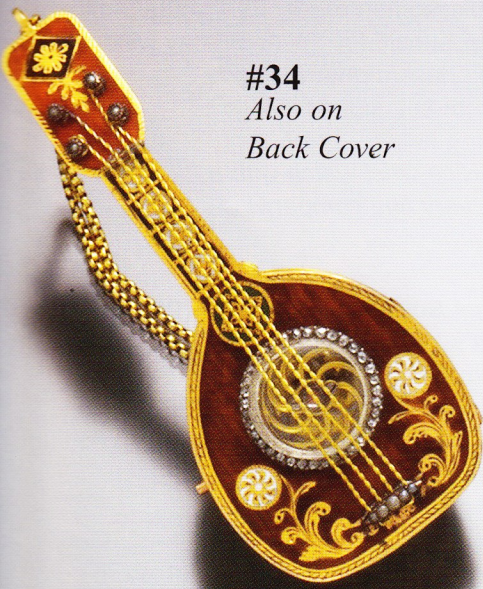
#33
Front
Also on
Front Cover



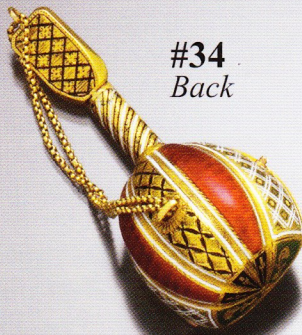
#33
Dial



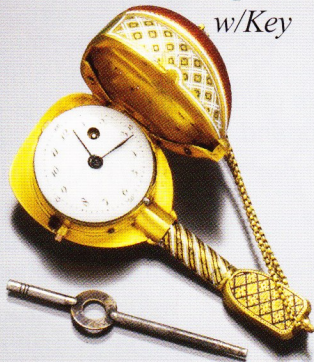
#33
Back



#34
Also on
Back Cover



#34
Back



#34
Open
w/Key



#34
Mov't.

35. Here it is! Historically Important Massive 18K Fully Carved 1/4-Hour Grand Sonnerie Clock Watch Presented To The Minister Of Interior From President Hugo Banzer Suarez Of Bolivia Brevet

(Swiss); Man's; Serial # 13896; Circa: 1895

CASE: No. 205951, 18 size, 55mm, hunter case, 18K rose gold, floral/barleycorn decorations. Heavily chased and carved covers, signed "Brevet."

DIAL: Fancy gold dial with carved floral center, metal/single sunk, Arabic numerals, spade/baton hands.

MOVT: 26 Jewel, lever-set, No. 13896, lever escapement, gilt, bridge style, signed.

C 2 | D 2 | M 2 | R 9-1/2

Experts Opinion: On demand watch strikes hours and quarters. Automatically strikes hours/quarters every 15-minutes! Presented by Hugo Banzer Suarez to his Minister of Interior in 1972. An unbelievable complex watch gifted by a democratic leader of Bolivia from 1971-1978.

Price: \$24,550.00

36. 14K Pink-Gold, Ruby & Diamond Fancy Retro Gruen Lady's Bracelet Wrist Watch

Gruen; Swiss; Lady's; Circa: 1948

STYLE: Length lug-to-lug 50mm, width 22mm without crown, length of band 6-1/4", thickness 5mm.

CASE: 14K Rose Gold, rectangular, fancy/flexible/hidden/oversized/curved lugs, diamond bezel, snap back.

BAND: 14K Gold original cord band.

DIAL: Off-white dial displaying Arabic numerals, minute/5-minute and baton hands.

MOVT: Manual, 17 jewel, lever escapement, stem-set, signed.

C 3 | D 3 | M 3 | R 6

Experts Opinion: An exquisite retro design. A watch that will draw plenty of attention 24 grams (TW)!

Price: \$1,225.00

37. 14K Retro Swiss Diamond & Yellow-Gold Lady's Bracelet Wrist Watch

Swiss; Lady's; Circa: 1945

STYLE: Length lug-to-lug 45mm, width 16mm without crown, length with band 6-1/2", thickness 8mm.

CASE: 14K yellow gold, rectangular, hidden/oversized lugs, diamond/carved bezel, snap back.

BAND: 14K original flexible band.

DIAL: Silver dial displaying Arabic numerals, minute/5-minute track, baton hands.

MOVT: Manual, 17 jewel, lever escapement, stem-set, signed.

C 3 | D 3-6 | M 3 | R 6

Experts Opinion: 42.2 Grams (TW). Very heavy with gold, diamond trim and a real looker! 92 Points of H color and VS quality stones!

Price: \$2,800.00

38. Original Early Mickey Mouse Unisex Wrist Watch With Scarce & Original Mickey Band

Ingersoll; U. S. A.; Unisex; Circa: 1933

STYLE: Length lug-to-lug 40mm, width 32mm without crown, length with band 6", thickness 8mm.

CASE: Base metal, white, round, snap back.

BAND: Original Mickey Mouse.

DIAL: Off-white Mickey Mouse, Arabic numerals, minute/5-minute track, mouse arms, 3 mice rotates.

MOVT: Manual, lever escapement, stem-set, signed.

C 3 | D 3 | M 3 | R 8

Experts Opinion: Usually used heavily - this one is exceptionally clean! A great investors piece!

Price: \$675.00

39. Platinum Deco Diamond & Sapphire Lady's Wrist Watch With Matching 14K Mesh Style Bracelet

Swiss; Lady's; Circa: 1928

STYLE: Length lug-to-lug 30mm, width 18mm without crown, band adjustable to very large size, thickness 5mm.

CASE: Platinum rectangular shape, diamond & sapphire bezel, snap back.

BAND: Matching 14K white gold mesh flexible gold.

DIAL: Silver (patterned), Arabic numerals, minute/5-minute track, baton hands.

MOVT: Manual, 17 jewel, lever escapement, stem-set, signed.

C 3 | D 3-6 | M 3 | R 6-1/2

Experts Opinion: Beautiful gift for the lady in your life! Quality one throughout - platinum case, 14K mesh bracelet!

Price: \$1,525.00

40. Movado Swiss Gold Plated & Steel Calendar Moon Phase Gent's Wrist Watch

Movado; Swiss; Man's; Circa: 1990

STYLE: Length lug-to-lug 40mm, width 33mm without crown, thickness 5mm.

CASE: No. 621473, Ref. No. 87-03-562, yellow gold filled, round, curved lugs, flute bezel and snap back.

DIAL: White, Arabic/Roman numerals, minute/5-minute track, baton hands, subsidiary seconds, day windows/calendar track/moon phase/month windows.

MOVT: Quartz, stem-set, signed.

C 3-15 | D 3 | M 3 | R 6

Experts Opinion: Nice wrist watch with a full calendar and moon phase by a very fine company!

Price: \$425.00

41. Stainless Steel Scarce Direct Read (Digital) Rectangular Man's Wrist Watch

Swiss; Man's; Circa: 1939

STYLE: Length lug-to-lug 40mm, width 22mm without crown, thickness 8mm. **CASE:** Stainless, white, rectangular, curved lugs, snap back.

BAND: Alligator.

DIAL: Direct read, Arabic numerals, direct read hands.

MOVT: Manual, 17 jewel, lever escapement, stem-set.

C 3 | D 3 | M 3 | R 7-1/2

Experts Opinion: Admirable condition, these very scarce watches are always in rough shape. This clean example would satisfy anyone. Beware - these are not good time-keepers, if they wind down, they are collectable!

Price: \$775.00

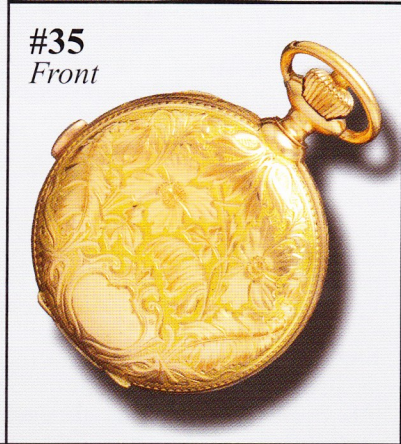
#35
Mov't.
Also on
Back Cover



#35
Open



#35
Front



#36

#37

#38

#39

#40

#41

42. Unusual 14K Oval Accutron Wrist Watch With Date & Red Marbleized Dial

Bulova/Accutron; Swiss; Man's; Circa: 1970s
STYLE: Length lug-to-lug 40mm, width 36mm without crown, thickness, thickness 9mm. CASE: No. 35277, 14K yellow gold, oval shape, reeded bezel, screw back.

DIAL: Two-tone red marble colored, markers, baton/radium hands, center sweep seconds, date windows.

MOVT: Electric, stem-set and signed.

C 3 | D 3 | M 3 | R 8

Experts Opinion: Have never seen this model in gold. *Accutron used a very heavy gold case in the construction of their watches!*

Price: \$675.00

43. Very Rare Lord Elgin Jump Hour & Wandering Minute Gold-Filled Rectangular Direct Read Gent's Wrist Watch

Elgin; U. S.; Man's; Circa: 1950s

STYLE: Length lug-to-lug 37mm, width 27mm without crown, thickness 6mm.

CASE: Yellow gold filled, rectangular shape, oversized lugs & snap back.

DIAL: White direct read, Arabic numerals, minute track, direct read hands.

MOVT: Manual, 23 jewels, lever escapement, stem-set, signed.

C 3 | D 2 | M 2 | R 8

Experts Opinion: Very tough to locate, disappearing quick! **Price: \$875.00**

44. Unusual Sterling Silver Flex Lugs Illinois Gent's Wrist Watch

Illinois; U. S.; Man's; Circa: 1918

STYLE: Length lug-to-lug 45mm, width 33mm without crown, thickness 7mm.

CASE: No. 3389469, sterling silver, round, flexible/oversized lugs, snap back.

DIAL: Silver, Arabic numerals, minute/5-minute track, spade hands, subsidiary seconds.

MOVT: Manual, #3256148, 17 jewel, lever escapement, stem-set, signed.

C 3 | D 3-28 | M 3 | R 7-1/2

Experts Opinion: A military style World War I wrist watch by one of the most collectible firms. A rare watch!

Price: \$525.00

45. Scarce Illinois White Gold Filled Generic Rectangular Wrist Watch W/Cut Corners & 90'clock Seconds Bit

Illinois; U. S.; Man's; Circa: 1931

STYLE: Length lug-to-lug 40mm, width 28mm without crown, thickness 5mm.

CASE: No. 6690707, White gold filled, rectangular, curved lugs, snap back, presentation on rear.

DIAL: silver, Arabic numerals, minute/5-minute track, feuille hands, subsidiary seconds.

MOVT: Manual, #4369695, 5 jewel, lever escapement, stem-set, signed.

C 3 | D 3-7 | M 3 | R 7

Experts Opinion: Quite desirable wrist watch, slowly disappearing from the market place!

Price: \$415.00

46. Elgin Black Porcelain Dial Military World War I Gent's Wrist Watch With Rare Screw Back Case

Elgin; U. S.; Man's; Circa: 1918

STYLE: Length lug-to-lug 40mm, width 33mm without crown, thickness 10mm.

CASE: No. 10233189, white ore silver, round, wire/oversized lugs, screw back.

DIAL: Black porcelain, Arabic numerals, minute/5-minute track, spade/radium hands, subsidiary seconds.

MOVT: Manual, No. 21370856, 7 jewel, lever escapement, stem-set, signed.

C 3 | D 2 | M 3 | R 7-1/2

Experts Opinion: Military guys - this is sweet with a splendid dial, must have been an officer's watch!

Price: \$500.00

47. Oversized .900 Fine Silver Man's Rectangular Wrist Watch With Carved Bezels By Longines & Company, Signed Tiffany Dial

Longines for Tiffany; Swiss; Circa: 1930

STYLE: Length lug-to-lug 45mm, width 28mm without crown, thickness 8mm.

CASE: No. 3097937, .900 silver, white, rectangular, carved bezel, snap back.

DIAL: Silver dial displaying Arabic numerals, minute/5-minute track, Mercedes hands, subsidiary seconds.

MOVT: Manual, 15 jewel, lever escapement, stem-set, signed.

C 3-6 | D 3-28 | M 3 | R 7

Experts Opinion: A very attractive silver wrist watch in an oversized case. Signed "Tiffany" on the dial and "Longines" on the movement.

Price: \$1,000.00

48. Rare Unlisted Hamilton Gold-Filled & Steel Man's Wrist Watch

Hamilton; U. S.; Man's; Circa: 1950s

STYLE: Length lug-to-lug 39mm, width 30mm without crown, thickness 6mm.

CASE: No. 5090450, Ref. No. 671, yellow rolled gold plate/stainless, round, fancy/curved lugs, carved bezel and snap back.

DIAL: Silver, Arabic/markers, dauphine hands, center sweep seconds.

MOVT: Manual, 17 jewel, lever escapement, stem-set, signed.

C 3 | D 3 | M 3 | R 7

Experts Opinion: Never seen this model, must be scarce. Great look!

Price: \$500.00

49. A Notable & Sought After Yellow & White Hamilton Pacer Electric Series 500 Man's Wrist Watch

Hamilton; U. S.; Man's; Circa: 1958

STYLE: Length lug-to-lug 45mm, width 32mm without crown, thickness 6mm.

CASE: Ref. No. 500, white steel and yellow gold-filled triangular shape, fancy/oversized lugs, snap back.

DIAL: Off-white, Arabic/markers, center sweep seconds.

MOVT: Electric, stem-set and signed.

C 2 | D 3 | M 3 | R 7-1/2

Experts Opinion: A very good-looking example of the pacer. A watch that was way ahead of its time in design!

Price: \$775.00

50. 43mm Gruen Man's Gold-Filled Curvex Wrist Watch

Gruen; Swiss; Man's; Circa: 1940s

STYLE: Length lug-to-lug 43mm, width 23mm without crown, thickness 5mm.

CASE: No. L196609, Ref. No. 370, yellow gold-filled/steel, rectangular, curved lugs, carved bezel, snap back.

DIAL: Silver, markers, minute/5-minute track, baton hands, subsidiary seconds.

MOVT: Manual, 17 jewel, lever escapement, stem-set, signed.

C 2 | D 2 | M 2 | R 7

Experts Opinion: The Wall Street look - Curvex wrist watches actually curve for a tighter fit on the wrist. Mint watch!

Price: \$675.00

51. 14K Gruen Curvex 38mm Rectangular Wrist Watch

Gruen; Swiss; Unisex; Circa: 1940s

STYLE: Length lug-to-lug 38mm, width 27mm without crown, thickness 5mm.

CASE: No. K42470, Ref. No. 440, 14K yellow gold, rectangular, fancy/curved lugs, snap back.

DIAL: Off-white, Arabic numerals, minute/5-minute track, Feuille hands, subsidiary seconds. **MOVT:** Manual, 17 jewel, lever escapement, stem-set, signed.

C 3 | D 3-28 | M 3 | R 7

Experts Opinion: Another Curvex but this one is 14K solid gold, 38mm long and sharp condition!

Price: \$650.00



52. 18K Pink-Gold Oversized Jaeger Le Coultre Teardrop Lugs Heavy Man's Wrist Watch

Jaeger Le Coultre; Swiss; Man's; Circa: 1950
STYLE: Length lug-to-lug 45mm, width 36mm without crown, thickness 6mm.

CASE: No. 306612, 18K rose gold, round, teardrop/oversized lugs and snap back.

DIAL: Silver, Arabic/markers, alpha hands, center sweep seconds.

MOVT: Manual, 17 jewel, lever escapement, stem-set, signed.

C 3 | D 3 | M 3 | R 7

Experts Opinion: This is a big, fat, juicy watch. I love the appearance when it's on the wrist!

Price: \$1,225.00

53. Wonderful 18K Omega Constellation With Date Gent's Wrist Watch & Omega Buckle

Omega; Swiss; Man's; Circa: 1969

STYLE: Length lug-to-lug 40mm, width 33mm without crown, thickness 6mm.

CASE: No. 166052, This round 18K yellow gold case features curved lugs, reeded bezel, screw back.

BAND: Lizard with original Omega gold-filled buckle.

DIAL: Gold, markers, minute track, baton hands, center sweep seconds, date windows.

MOVT: Automatic, No. 29003031, 24 jewel, lever escapement, stem-set, signed.

C 3 | D 3 | M 3 | R 8

Experts Opinion: Signed buckle. Great watch, great gift! A sweet timepiece that is very much in demand!

Price: \$1,525.00

54. Gold Plated Cartier Lady's Tank Wrist Watch

Cartier; Swiss; Lady's; Circa: 1980

STYLE: Length lug-to-lug 28mm, width 22mm without crown, thickness 5mm.

CASE: No. 12477, yellow rolled gold plate, yellow, rectangular shape, snap back.

DIAL: Off-white, Roman numerals, minute/5-minute track, baton hands.

MOVT: Manual, 17 jewel, lever escapement, stem-set, signed.

C 3 | D 3-17-46 | M 3 | R 6

Experts Opinion: Quite a sought after wrist watch. Very collectible!

Price: \$625.00

55. Scarce 18K Breitling Rectangular Watch W/Fancy Lugs

Breitling; Swiss; Man's; Circa: 1940s

STYLE: Length lug-to-lug 35mm, width 26mm without crown, thickness 6mm.

CASE: 18K yellow gold, rectangular shape, fancy lugs and snap back.

DIAL: Silver, Arabic/markers, minute/5-minute track, subsidiary seconds.

MOVT: Manual, 17 jewel, lever escapement, stem-set, signed.

C 3 | D 3-29 | M 3 | R 7

Experts Opinion: A fine watch by a fine company. Unusual to see fancy lugs on Breitlings! A very nice find!

Price: \$1,025.00

56. Elbros Steel Black Dial Chronograph Wrist Watch

Elbros; Swiss; Man's; Circa: 1940s

STYLE: Length lug-to-lug 45mm, width 35mm without crown, thickness 10mm.

CASE: No. 1100, stainless, white, round, curved lugs, fluted bezel, snap back.

DIAL: Black, Arabic numerals, telemeter track, baton hands, subsidiary seconds, 30-minute register.

MOVT: Manual, 17 jewel, lever escapement, system-set, signed.

C 3 | D 3-15 | M 3 | R 7

Experts Opinion: Quickly disappearing from the market place!
Price: \$425.00

57. Sweet & Sharp Continental Black Dial Round Button Chronograph Gent's Wrist Watch

Continental; Swiss; Man's; Circa: 1970s

STYLE: Length lug-to-lug 42mm, width 35mm without crown, thickness 10mm.

CASE: No. 33223, stainless, white, round, curved lugs, screw back.

DIAL: Black, Arabic numerals, minute/telemeter track, baton/radium hands, subsidiary seconds, 30-minute register.

MOVT: manual, 17 jewel, lever escapement, stem-set, signed.

C 3-9 | D 2 | M 3 | R 7

Experts Opinion: An exquisite dial on a collectible watch!
Price: \$525.00

58. 18K Rose-Gold Square Button Chronograph Wrist Watch

Charles Nicolet; Swiss; Man's; Circa: 1940s

STYLE: Length lug-to-lug 42mm, width 33mm without crown, thickness 7mm.

CASE: No. 20718, 18K rose gold, round shape, curved lugs, snap back.

DIAL: Silver, Arabic/markers, minute/5-minute/telemeter track, fancy radium baton hands, subsidiary seconds, 45-minute register.

MOVT: Manual, 17 jewel, lever escapement, stem-set, signed.

C 3 | D 3-7 | M 3 | R 7-1/2

Experts Opinion: All the 18K gold chronographs are slowly making their way to Europe, let's save a few for the U. S. A.

Price: \$900.00

59. Wonderful White 14K Longines Diamond Dial Wrist Watch

Longines; Swiss; Man's; Circa: 1960s

STYLE: Length lug-to-lug 38mm, width 32mm without crown, thickness 5mm.

CASE: 14K white, round, engraved bezel, snap back.

BAND: Standard leather with deployment buckle.

DIAL: Diamonds/silver, markers, baton hands, subsidiary seconds.

MOVT: Manual, 17 jewel, lever escapement, stem-set, signed.

C 3 | D 3 | M 3 | R 7-1/2

Experts Opinion: A circle of gem quality diamonds make this a very special dress watch. Case is completely cross-etched for beauty!

Price: \$1,000.00

60. Outstanding Massive Oversized 18K Jaeger Le Coultre Flex Lugs Wrist Watch

Le Coultre; Swiss; Man's; Circa: 1960

STYLE: Length lug-to-lug 55mm, width 40mm without crown, thickness 10mm.

CASE: 18K rose gold, round shape, flexible lugs, snap back.

BAND: Ostrich

DIAL: Gold, Arabic numerals, spade hands.

MOVT: Manual, 16 jewel, lever escapement, stem-set, signed.

C 3 | D 3 | M 3 | R 7-1/2

Experts Opinion: Likely converted from a pocket watch in the 60s, massive gold case, beautiful construction. A watch to impress!

Price: \$3,550.00



61. Elegant 14K Rolex Lady's Dress Wrist Watch

Rolex; Swiss; Lady's; Circa: 1940s
STYLE: Length lug-to-lug 27mm, width 20mm without crown, thickness 5mm.

CASE: 14K yellow gold, round shape, curved lugs, and snap back.

DIAL: Off-white, Arabic/markers, baton hands.

MOVT: Manual, 17 jewel, lever escapement, stem-set, signed.

C 3 | D 3-7 | M 3 | R 7

Experts Opinion: A wonderful gift for your lady. An every day watch you can wear to dinner!

Price: \$625.00

62. Scarce 18K Reference 1417 Rolex Lady's 1/4-Century Octagon Wrist Watch

Rolex; Swiss; Lady's; Circa: 1932

STYLE: Length lug-to-lug 23mm, width 20mm without crown, thickness 5mm.

CASE: 18K white gold, 8 sided, wire lugs, snap back.

DIAL: Silver, 1/4-century, minute/5-minute track, spade hands.

MOVT: Manual, 17 jewel, lever escapement, stem set, signed.

C 3 | D 3 | M 3 | R 8

Experts Opinion: 1/4-Century Club watches by Rolex, especially ladies are quite scarce. This is an exceptional one since it is 8-sided. (monogram & presentation on back).

Price: \$1,025.00

63. Scarce 1977 GMT Master By Rolex, Original & Clean Wrist Watch

Rolex; Swiss; Man's; Circa: 1977

STYLE: Length lug-to-lug 48mm, width 40mm without crown, thickness 10mm. **CASE:** Ref. No. 1675, stainless, white, round shape, curved lugs, enamel/rotating bezel, screw back.

BAND: Original Rolex, bracelet style.

DIAL: Black, markers, minute/5-minute track, Mercedes hands + 24-hour hand, center sweep seconds, date windows.

MOVT: Automatic, 26 jewel, lever escapement, stem set, signed.

C 3 | D 3 | M 3 | R 8

Experts Opinion: Very sharp and a true rarity, unusual to find this clean!

Price: \$3,800.00

64. Nice Early Two-Tone Rolex Man's Wrist Watch

Rolex; Swiss; Man's; Circa: 1935

STYLE: Length lug-to-lug 40mm, width 33mm without crown, thickness 10mm.

CASE: No. 70402, Ref. No. 6332, yellow rolled gold plate/stainless, white/yellow, round shape, curved lugs, screw back/bubble steel back.

DIAL: Black, markers, minute/5-minute track, baton/radium hands.

MOVT: Automatic, 18 jewel, lever escapement, stem set, signed.

C 3 | D 2 | M 3 | R 8-1/2

Experts Opinion: A rare model 6332 in excellent condition. You can search for years before you'll ever see another in this condition!

Price: \$1,275.00

65. 18K Lady's Rolex President Bracelet Wrist Watch

Rolex; Swiss; Lady's; Circa: 1959

STYLE: Length lug-to-lug 35mm, width 26mm without crown, thickness 10mm.

CASE: Ref. No. 6900, 18K yellow gold, round shape, curved lugs, reeded bezel, screw back.

BAND: Original 18K Rolex bracelet-style with deployment buckle.

DIAL: Off-white, markers, minute/5-minute track, baton/radium hands.

MOVT: Automatic, No. 994501, 28 jewel, lever escapement, stem set, signed.

C 3 | D 3 | M 3 | R 7-1/2

Experts Opinion: All extra links are included, band nice and tight. Early but very sharp condition!

Price: \$4,800.00

66. Astonishing C. H. Meylon Flex Lugs 18K & Enamel Art Deco Man's Rectangular Wrist Watch

C. H. Meylon; Swiss; Man's; Circa: 1930s

STYLE: Length lug-to-lug 42mm, width 25mm without crown,

thickness 5mm.

CASE: No. 104820, 18K white gold, rectangular, flexible/oversized lugs, enamel bezel, snap back.

BAND: Alligator.

DIAL: Silver, Arabic numerals, enameled bezel, minute/5-minute track, Breguet hands,

MOVT: Manual, 18 jewel, 5 adjustments, lever escapement, stem set, signed.

C 2 | D 2-28 | M 2 | R 8-1/2

Experts Opinion: One of the nicest appearing watches we have had in a long while. Art Deco at its finest!

Price: \$3,050.00

67. 14K Le Coultre/Vacheron&Constantin Diamond Mystery Dial

Le Coultre/Vacheron & Constantin; Swiss; Man's; Circa: 1950s

STYLE: Length lug-to-lug 38mm, width 35mm without crown, thickness 5mm.

CASE: No. 57082, 14K, white, round shape, curved lugs, snap back.

DIAL: Off-white, diamonds (36), diamond mystery numerals, markers, mystery diamond hands.

MOVT: Manual, 17 jewel, lever escapement, stem set, signed.

C 3-50 | D 3 | M 3 | R 8

Experts Opinion: 36 Diamonds enhance this rare mystery dial. Vacheron & Constantin & Le Coultre teamed up to make these true collectors items!

Price: \$3,300.00

68. Extraordinary Platinum & Diamond Lady's Patek Philippe Deco Wrist Watch

Patek Philippe; Swiss; Lady's; Circa: 1930s

STYLE: Length lug-to-lug 30mm, width 17mm without crown, thickness 5mm.

CASE: Platinum, 6 sides, fancy/curved lugs, diamond bezel, snap back.

BAND: Ribbon.

DIAL: Silver, Arabic numerals, minute/5-minute track, spade hands.

MOVT: Manual, 18 jewel, fully adjusted, lever escapement, stem set, signed.

C 3 | D 3-6 | M 3 | R 8-1/2

Experts Opinion: A very rare wrist watch containing 50 quality one diamonds. Platinum case and number one watch company in the world. Anything else?

Price: \$5,300.00

69. 18K Patek Philippe Wrist Watch Sold Through Gueblin

Patek Philippe; Swiss; Man's; Circa: 1960

STYLE: Length lug-to-lug 40mm, width 32mm without crown, thickness 5mm.

CASE: This round 18K yellow gold case features curved lugs, snap back.

DIAL: Gold, markers, baton hands.

MOVT: Manual, 18 jewel, lever escapement, stem set, signed.

C 3 | D 3 | M 3 | R 7

Experts Opinion: The simple version of a great watch. Thin, elegant and the finest quality!

Price: \$4,300.00

70. Rolex Super Rare 2918 Olive Pusher Steel Chronograph Wrist Watch With Flex Lugs & Rose Dial

Rolex; Swiss; Man's; Circa: 1937

STYLE: Length lug-to-lug 48mm, width 34mm without crown, thickness 10mm.

CASE: No. 31736, Ref. No. 2918, stainless, white, round shape, flexible/oversized lugs, snap back.

DIAL: Rose-gold, Arabic numerals, minute/5-minute/telemeter track, baton hands, subsidiary seconds, 30-minute register.

MOVT: Manual, 17 jewel, lever escapement, stem set, signed.

C 3 | D 3-28 | M 3 | R 9-1/2

Experts Opinion: In business over 45 years and this is the only one of these we have ever owned. A watch that should be salted away for the future inflation! On the cover of the 2011 Price Guide!

Price: \$37,550.00



#61

#62

#63

#64

#65

#62
Back



#67

#69
Also on
Back Cover

#70
Also on
Front Cover

#68

#66
Also on
Back Cover

#70
Side



ASHLAND continues to be a major buyer...

in the field of horology and vertu with extreme purchasing power. Please give ASHLAND the opportunity to make an offer on your valued collection when the time comes to liquidate your investment.

- * Informative Articles
- * Market Updates
- * Calendar of Events
- * Appraisals
- * Authentication Service
- * And Much More ...

Now Live!
Grand Opening of



- * Pocket Watch Sales
- * Wristwatch Sales
- * Jewelry Sales
- * Auctions
- * Accessories
- * Ephemera

Richard M. Gilbert