

ASHLAND

A Catalog of Fine and Important Watches



#32

#70



Call Toll Free
1-800-424-5353

or call
1-941-957-3760

FAX
1-941-365-4931

SUITE 200, 640 SOUTH WASHINGTON BLVD. • SARASOTA, FL 34236-7137

ASHLAND

1-800-424-5353
OR
1-941-957-3760
FAX
1-941-365-4931

- A. Due to rapid sales, ordering by phone is recommended. Please ask for RICK GILBERT or JIM MILLER at
B. Please make checks or money orders payable to: ASHLAND.
We also accept Visa, MasterCard and American Express
C. ASHLAND offers a full seven (7) day return privilege on items improperly described.
D. Orders can be held for 45 days with a 20% non-refundable deposit.
E. Office Hours are 9 a.m. to 5 p.m., Monday through Friday.

Send all checks to: ASHLAND, Suite 200, 640 South Washington Blvd., Sarasota, FL 34236-7137; All Foreign orders should be paid by Bank Wire Transfer; Northern Trust Bank of Florida; ABA #066009650; Checking Account Number 718936; Credit to ASHLAND INVESTMENT

ASHLAND GRADING SYSTEM GUIDE

The lots described in this catalog have been carefully examined and valued by Ashland's experts and watch makers, taking into consideration the aesthetic, historical and technical interest, age and rarity, as well as the technology available at the time of production of each timepiece.

For such judgment to be as objective as possible, it must rest on a number of criteria, particularly with regards to the age of a lot. Indeed, a wrist watch of less than 50 years old cannot be judged with the same criteria as a Renaissance watch. This is the reason why some of the gradings will only qualify for certain types of watches and will never be used for others.

For example, if, as a general rule, watches can be attributed gradings from 1 to 4 for the case, the dial and the movement, watches of less than 100 years old can be given grading 1 (as new), 3 (in very good condition), or 4 (in good condition). The latter, (grading 4), will be followed by one or more grading numbers to justify why the lot cannot be considered "in very good condition". On the other hand, watches over 100 years old, of similar condition, would indeed be considered as "very good" because of their age and would therefore qualify for grading 3. Needless to say, watches over 100 years old, even the best state of conservation for their age, are unlikely to ever be considered "as new" and would therefore never be eligible for grading 1; for this reason, we have introduced grading 2 (in perfect condition).

At the end of each lot description, before the description, you will find a condition report box, with letters and numbers, divided into 4 sections: these are the grades given to the lot with reference to the condition of its case, its dial and hands, its movement, and its rarity level-if applicable.

To understand the grades shown in the condition report box, consult the Grading System as follows:

- C** for the case, followed by one or more numbers = condition of case.
D for the dial (& hands), followed by one or more numbers = condition of dial & hands.
M for the movement, followed by one or more numbers = condition of movement.

Next to this condition report box, is an experts rarity box featuring one number from 1-10 as an overall rarity grade.

See example below:

C 1	D 1-01	M 1	R 4
------------	---------------	------------	------------

Case: as new Dial: as new - original hands Movement: as new Rarity Grade

GUIDE TO GRADING

1 : as new	2 : in perfect condition	3 : very good	4 : good	5 : fair
------------	--------------------------	---------------	----------	----------

C CASE	ENAMEL AND VARIOUS TYPES OF DECORATION	D DIAL (cont.)	HANDS	RARITY GRADE
DETAILS				
6 patinated	54 very worn	25 partly rubbed	01 original	A select group of watches in this catalog have been assigned a "rarity grade" which will appear in the description heading. The total production number of U. S. made pocket watches and vintage wrist watches are fairly well known and accessible, unlike the large and more varied output of European makers and of early horological examples. Therefore, this simplified 1 thru 10 numerical grade is designed to assist collectors and investors in determining the scarcity of a given timepiece in today's market (#1 is considered common to #10, which is an extremely rare item). The following factors are the basis of assigned rarity levels: (c) Historical importance. (d) Condition in relationship to other examples of similar type. (e) Artistic case design, i.e. enamel, unusual shape or form pieces. (f) Low survival rate of similar types. (g) Investment potential for increase in demand and price. A rarity grade will be assigned to highlight items which offer strong investment potential (generally items of level 5 thru 10).
7 slightly oxydized	55 very slightly chipped	26 very well reprinted by the manufacturer	02 replaced by the manufacturer	
8 oxydized	56 chipped	27 partially reprinted	03 later original	
9 slightly scratched	57 damaged	28 very well reprinted	04 partially replaced	
10 scratched	58 very damaged	29 well reprinted	05 period	
11 deeply scratched	59 slight restoration (hard enamel)	30 reprinted	06 later	
12 a dent	60 restored (hard enamel)	31 luminous reprinted	07 repaired	
13 2 dents	61 slight restoration (soft enamel)	32 alterations	08 damaged	
14 multiple dents	62 restored (soft enamel)	33 period, original	09 new luminous	
15 slightly worn	63 period original	34 later original		
16 worn	64 later original	35 period	M MOVEMENT	
17 very worn	65 period	36 later	DETAILS	
18 repolished edges preserved	66 later	37 custom-made	6 patinated	
19 repolished edges altered	67 custom-made	38 to be restored	7 slightly oxydized	
20 back threading damaged	68 to be restored		8 oxydized	
21 period original	69 pearl missing	ENAMEL DIAL DETAILS	9 slightly scratched	
22 later original	70 pearls missing	39 slightly oxydized	10 scratched	
23 period	71 paste stone missing	40 slightly scratched	11 plating slightly deteriorated	
24 later	72 paste stones missing	41 scratched	12 plating deteriorated	
25 custom-made	73 precious stone missing	42 deeply scratched	13 rusted	
26 replacements	74 precious stones missing	43 hairline	14 a dent	
27 lacking elements	75 outer over glaze	44 two hairlines	15 dents	
28 transformations		45 multiple hairlines	16 replacements	
29 alterations	D DIAL	46 chips(s) or hairline(s) under bezel, not visible when closed	17 lacking elements	
30 damaged	METALLIC DIAL DETAILS	47 hairline, subsidiary dial	18 later escapement	
31 very damaged	6 patinated	48 hairlines, subsidiary dial	19 upgraded	
32 restored by the manufacturer	7 slightly oxydized	49 chipped subsidiary dial	20 later balance	
33 slightly restored	8 oxydized	50 hairline(s) barely visible	21 transformations	
34 restorations	9 slightly scratched	51 slightly worn	22 alterations	
35 worn pushpiece	10 scratched	52 worn	23 damaged	
36 worn pushpieces	11 deeply scratched	53 very slightly chipped	24 very damaged	
37 replaced pushpieces	12 a dent	54 chipped, winding aperture	25 restored by the manufacturer	
38 later original crown	13 2 dents	55 chipped	26 slightly restored	
39 period crown	14 multiple dents	56 damaged	27 restorations	
40 to be restored	15 spotted	57 slightly restored	28 inscription rubbed	
41 partially re-gilt	16 slightly worn	58 restored by the manufacturer	29 re-rhodiumed	
42 re-gilt	17 worn	59 restorations	30 re-gilt	
43 bow replaced	18 very worn	60 soft overglazed	31 period, original	
44 hinge worn	19 damaged	61 partly rubbed	32 later original	
45 hinge restored	20 refreshed	62 alterations	33 period	
46 renumbered	21 soft over glazed	63 period, original	34 later	
47 hairline	22 slightly restored	64 later original	35 custom-made	
48 2 hairlines	23 restored by the manufacturer	65 period	36 to be overhauled	
49 multiple hairlines	24 restorations	66 later	37 to be restored	
50 slightly scratched		67 custom-made	- a. cleaned	
51 scratched		68 to be restored	- b. minor	
52 slightly worn			- c. major	
53 worn			- d. broken staff	
			* overhaul recommended (at buyer's expense)	
			** overhaul required (at buyer's expense)	



1. 18K Gold Contemporary Blue Enamel Fancy Dialed Lady's Lapel Watch

Swiss; Swiss; Circa Date: 1970

CASE: 18K yellow gold, 0 Size, 32mm, open face case featuring floral/enamel decorations and signed "18K .750".

DIAL: This fancy gold & black metal dial displays Roman numerals and spade hands.

MOVT: 17 Jewel, stem-set movement with lever escapement, nickel, bridge style, and unsigned.

C 3	D 2	M 2	R 5
-----	-----	-----	-----

Experts Opinion: Clean & beautiful!

Price: \$575.00

2. Stunning 18K Red Enamel (Guilloché) With Diamonds Décor Lady's Open Face Lapel Watch

Swiss; Swiss; Serial # 82045; Circa Date: 1902

CASE: No. 82045. 18K rose gold 3/0 size, 26mm, open face case featuring enamel decorations and diamond décor.

DIAL: Off-white, fancy, porcelain, Arabic numerals, filigree hands.

MOVT: 15 Jewel, pin-set, movement No. 82045 with cylinder escapement, nickel, bridge style. Unsigned.

C 3	D 3	M 3	R 7
-----	-----	-----	-----

Experts Opinion: On dust cover "Otho to Stella." Sunburst guilloché enamel with floral diamond trim! Exquisite and lovely lady's watch!

Price: \$1,125.00

3. Outstanding 18K Swiss Jade & 18K Gold Swiss (C. Pourrant) Unique Purse Watch With Art Deco Style

C. Pourrant; Swiss; Circa Date: 1910

CASE: 18K Yellow gold, oversized (60mm x 20mm), open face case featuring geometric decorations with carved stone overlaid in 18K gold (rare process).

DIAL: Off-white metal dial displaying Arabic numerals, Breguet hands, and signed "Geneva."

MOVT: 18 Jewel, stem-set movement with lever escapement, nickel, bridge style, and signed.

C 3	D 3-28	M 3	R 8
-----	--------	-----	-----

Experts Opinion: H L gold inlay. Nephrie & Jadite with cut black onyx makes this rare and unique case an obvious special order. A spectacular watch! Jade ball is the actual crown winding and setting.

Price: \$4550.00

4. The 925 (1 of 925 pieces) No. 82 Marcel Sterling Silver Gent's Hunters Case Watch with Original Papers

Jean Marcel; Swiss; Serial # 82; Circa Date: Contemporary

CASE: No. 82, 16 size, 52mm, hunter case, sterling silver, yellow, plain.

DIAL: Silver dial displaying tapestry background, Arabic numerals, and Breguet hands.

MOVT: 17 Jewel, stem-set, movement No. 82 with lever escapement, nickel, bridge style, and signed.

C 2	D 2	M 2	R 6-1/2
-----	-----	-----	---------

Experts Opinion: A real collector's watch, early from the series at a major cut in retail!

Price: \$450.00

5. Very Rare Heuer Super Autavia First Dashboard Chronograph Pocket Watch with 30-Minute Register & Rotating Bezel

(Heuer) Autavia; Unisex; Circa Date: 1940/50

CASE: 18 Size, 56mm, open face, stainless, plain.

DIAL: Black dial with rotating bezel numbered 1-12; Displays Arabic numerals, spade hands, and signed Autavia.

MOVT: 17 Jewel, stem-set movement with lever escapement, nickel, bridge style, and signed "Sears & Roebuck."

C 3	D 3	M 3	R 7
-----	-----	-----	-----

Experts Opinion: Collectors alert – super cool Heuer. Dashboard black dial chronograph, never owned one before. Looks military but no markings, missing back mounting plates.

Price: \$825.00

6. Exceptional Sterling 8-Day/Alarm Travel Clock Gifted To "Dr. Harry Trimble Ph. S Biological Chemistry Professor at Harvard University (1922-1955)"

Cortland Watch Co.; Swiss; Circa Date: 1950s

CASE: Plain sterling silver hunter case measuring 25mm thick, 80mm x 65mm, signed "Concord Watch Co. (Cortland).

DIAL: Silver metal dial displaying Arabic/markers, baton/radium hands and signed "Bigelow Kennard & Co. (8-Day) Alarm."

MOVT: 15 Jewel, stem-set, movement No. 738 with lever escapement, nickel, bridge style, and signed.

C 3	D 3	M 3	R 6
-----	-----	-----	-----

Experts Opinion: A collectors dream, presented to a Harvard Professor. Heavy & desirable!

Price: \$775.00

7. Rare 14K Pink & Green-Gold Special Order Case with Lever Pull Setting 19 Jewel Waltham Riverside A Watch

Waltham; U.S.A Mass.; Serial # 20160558; Circa 1920

CASE: No. 4533. 14K rose & green gold, 12/14 size, open face dial featuring geometric decorations.

DIAL: Gold/silver metal dial displays Roman numerals and Breguet hands.

MOVT: 19 Jewel movement with unique pull lever, 5 adjustments, lever escapement, nickel, bridge style, and signed "Riverside A."

C 3	D 3-6	M 3	R 7
-----	-------	-----	-----

Experts Opinion: Presented inner back lid to "Chas Hotchkiss (Cleveland Works) 1888-1920". Rare patented case with gold pull lever near crown for setting. Pink and green-stripped case – wow!

Price: \$775.00

8. Scarce 14K 8 Size Hunter Case Philadelphia Watch Company Small Gent's Or Lady's Pocket Watch

Philadelphia Watch Co.; Unisex; Serial #40053; Circa 1895

CASE: No. 8100. 14K rose gold, 8 size, hunter case featuring floral/geometric decorations and signed SF CH "Philadelphia Watch Co."

DIAL: White porcelain dial displays Roman numerals, filigree hands and is signed "Philadelphia Watch Co."

MOVT: 16 Jewel, lever-set, movement No. 40053 with lever escapement, nickel, 3/4-plate, and signed.

C 3-13	D 2	M 3	R 6
--------	-----	-----	-----

Experts Opinion: Seldom seen, this lady's or small gent's pocket watch is a good investment with two pluses – gold & rarity!

Price: \$1,025.00

9. Crisp 14K Yellow & Green-Gold Oversized IWC Gent's Pocket Watch with Wonderful Case Engraving

International Watch Co.; Swiss; Serial # 840480; Circa 1925

CASE: No. 873144. This 14K yellow & green gold case is approx. 16 size, 50.5mm, open face, is fully engraved everywhere with floral/barleycorn and is signed "I. W. C. Trobus – Scafusia."

DIAL: Off-white & silver dial displays Arabic numerals, Breguet hands, closed diamonds, and is signed "I. W. C. Schaffhausen."

MOVT: 20 Jewel, stem-set, movement No. 840480 with lever escapement, gilt, bridge style, is signed "I. W. C. Trobus – Scafusia."

C 3-9	D 2	M 2	R 6-1/2
-------	-----	-----	---------

Experts Opinion: Blank shield – highly decorated open face double back hinged 50mm 14K case totally 100% engraving, triple signed "I. W. C.". Movement looks new, mint condition, vintage 25. Good-looking I. W. C. 16 thin size!

Price: \$1,275.00

10. Extraordinary Platinum Vacheron & Constantin Gent's Pocket Watch

Vacheron & Constantin; Swiss; Serial # 401108; Circa 1928

CASE: No. 2517. This white platinum plain case is 12 size, 45mm, open face, numbered and platinum.

DIAL: This silver dial displays Arabic numerals, Breguet hands/closed diamonds and is signed "Vacheron Constantin Geneve."

MOVT: 18 Jewel, stem-set, movement No. 401108, with 8 adjustments, lever escapement, nickel, bridge style, and signed "Vacheron & Constantin."

C 2	D 2	M 2	R 7
-----	-----	-----	-----

Experts Opinion: Finding a platinum Vacheron & Constantin is hard to do. Sadly so many are melted for their intrinsic value – all the rarer. A real jewel!

Price: \$4,325.00

11. Scarce 17 Jewel Omega Roseborough's Railway Special Watch w/Great 24-Hour Canadian Railway Dial

Omega; Swiss; Serial # 1413393; Circa Date: 1899

CASE: No. 120089 Rose gold filled, 18 size, open face case featuring plain/floral decorations and signed "Premier."

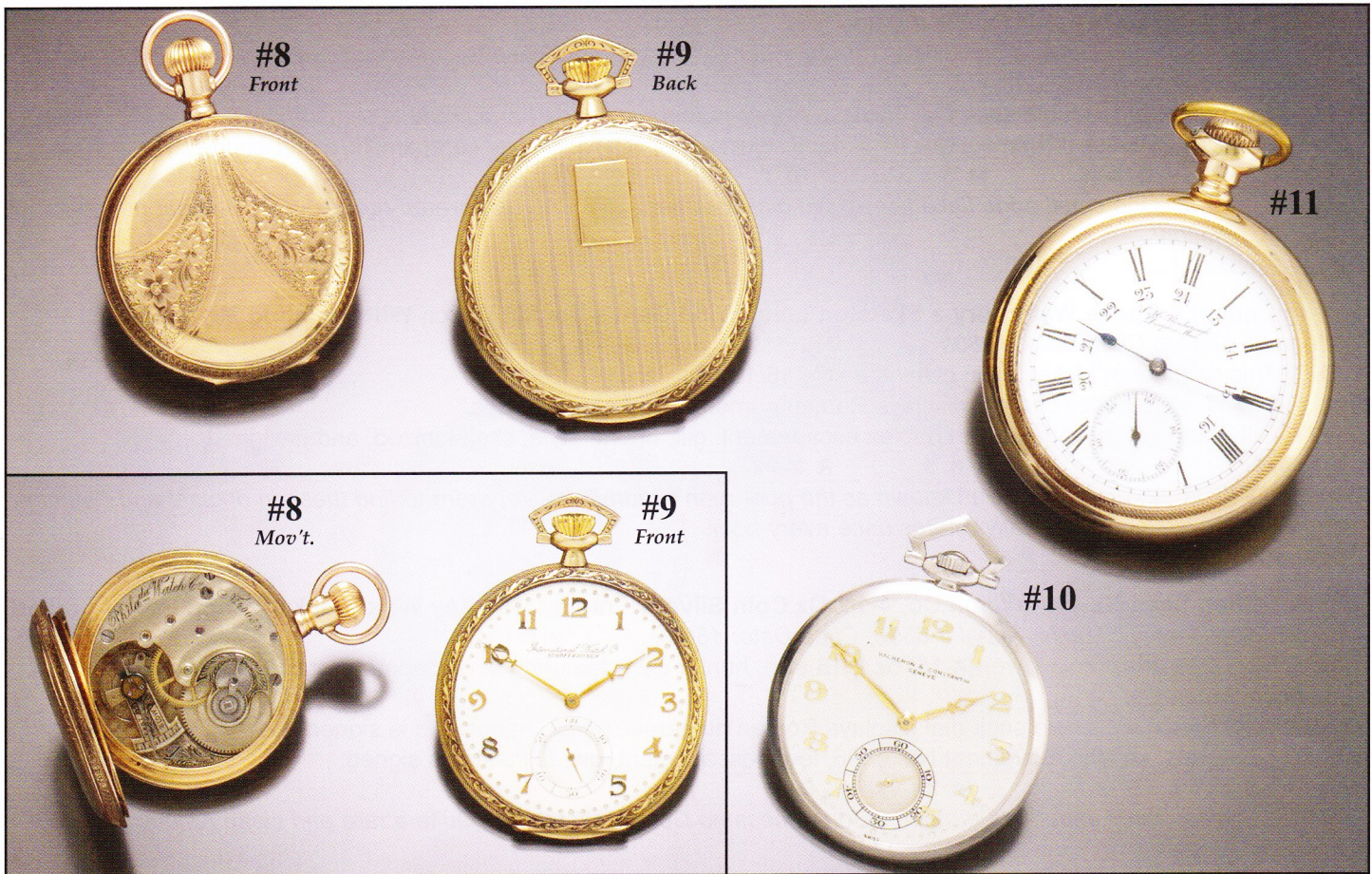
DIAL: White porcelain, single sunk dial displays Arabic/Roman numerals, 24-hr. markings, spade hands, and signed "Roseborough."

MOVT: 17 Jewel, stem-set movement with lever escapement, nickel, 3/4-plate, and signed.

C 3	D 3	M 2-6	R 7
-----	-----	-------	-----

Experts Opinion: Hard to find Canadian railway fully signed!

Price: \$475.00



ASHLAND

12. 12 Size 23 Jewel Waltham Riverside Maximus Pocket Watch with Original Script Dial

Waltham; Unisex; Serial # 12625125; Circa Date: 1903

CASE: No. 8623375. White gold filled, 12 size, open face case featuring plain/floral decorations and signed "Star Case Company."

DIAL: White porcelain, double sunk dial displays Arabic numerals, spade hands, and signed "Waltham."

MOVT: 23 Jewel, stem-set movement with lever escapement, nickel, bridge style, and signed.

C 3	D 2	M 2	R 6
-----	-----	-----	-----

Experts Opinion: Clean & great timekeeper – rare dial!

Price: \$475.00

13. Rare 23 Jewel Illinois Sangamo Special 60-Hour Pocket Watch w/Hinged Back & White Sangamo Signed Case

Illinois; Man's; Serial # 4734050; Circa Date: 1925

CASE: No. 7556453. This white gold filled, 16 size, open face case features plain/geometric designs and is signed "Wadsworth (Sangamo Special)"

DIAL: White porcelain, double sunk dial displays Arabic numerals, spade hands, and is signed "Illinois."

MOVT: 23 Jewel, lever-set, movement No. 4734050, 6 positions, lever escapement, nickel, bridge style, is signed.

C 3	D 3-43	M 3	R 7-1/2
-----	--------	-----	---------

Experts Opinion: A disappearing model, unusual to find one this clean!

Price: \$1,225.00

14. Extra Special Illinois 23 Jewel 60-Hour Bunn Special Pocket Watch In A Great Model 28 Two-Tone Case with A 23 Jewel 60-Hour Signed Dial

Illinois; Man's; Serial # 5180597; Circa Date: 1928

CASE: No. 1061333. Yellow & white gold filled, 16 size, open face case featuring plain/geometric decorations and signed "Keystone, Bunn Special, Model #28."

DIAL: White porcelain, double sunk dial displays Arabic numerals and spade hands.

MOVT: 23 Jewel, lever-set, movement No. 5180597, 6 positions, lever escapement, nickel, 3/4-plate, is signed.

C 2	D 2	M 2	R 8
-----	-----	-----	-----

Experts Opinion: I have always loved these two-tone railroad cases. This watch is just superb in every respect!

Price: \$2,550.00

15. Hard To Find 23 Jewel Howard Series 0 Railroad Pocket Watch

Howard; Man's; Serial # 1316145; Circa Date: 1917

CASE: No. 1549626. This rose gold filled, 16 size, open face, swing-out case features plain/floral/crest decorations, and is signed "Keystone E. Howard & Co."

DIAL: White porcelain, double sunk dial displays Arabic numerals, spade hands, and is signed "Howard."

MOVT: 23 Jewel, lever-set, movement No. 1316145, 5 adjustments, heat/cold, lever escapement, nickel, bridge style, is signed.

C 3	D 3-46	M 3	R 7
-----	--------	-----	-----

Experts Opinion: One small edge flake keeps this dial from perfection. An underrated railroad watch! Great hedge for upcoming inflation!

Price: \$925.00

16. Infrequent 6 Spoke Waterbury a Skeleton Long Wind Gent's Pocket Watch With Rotating Movement

Waterbury; Gent's; Circa Date: 1880s

CASE: This open face, nickel, plain case is a size 16/18.

DIAL: This off white paper chapter displays Roman numerals and spade hands.

MOVT: Gilt, hand set movement with duplex escapement, gilt, bridge style, skeletonized, and unsigned.

C 3-16	D 3-8-15	M 3	R 6-1/2
--------	----------	-----	---------

Experts Opinion: 2 Stars – this was known as the poor man's tourbillion. Very rare to find these in original and running condition! The movement actually rotates once every hour.

Price: \$625.00

17. Not Often Seen Newark Watch Co. 4-1/2 Oz. Coin Silver Hunters Case Key Wind Pocket Watch Edward Biven

Newark (New Jersey); Man's; Serial # 6896; Circa Date: 1868

CASE: No. L286. Plain coin silver (4-1/2 oz.), 18 size, hunter case featuring floral/geometric decorations and is signed "American Watch Co."

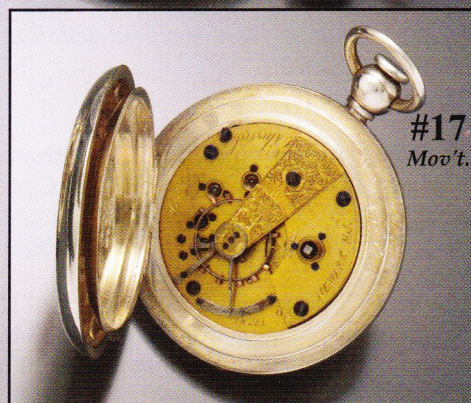
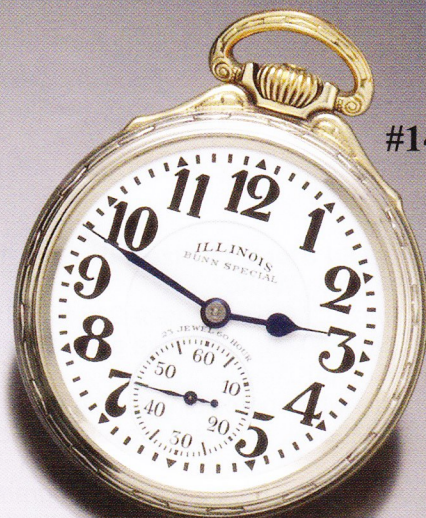
DIAL: White porcelain, single sunk dial displays Roman numerals, spade hands and is signed "Newark Watch Co."

MOVT: 15 Jewels, keyset, movement No. 6896, lever escapement, gilt, full plate, is signed.

C 3	D 2	M 3	R 8
-----	-----	-----	-----

Experts Opinion: Only about 8,000 made before it became Cornell Watch Co. Quite a rare and clean American collection item (two stars)!

Price: \$875.00



18. Rare 15 Jewel Illinois "Chicago" 18 Size Gold-Filled Hunters Case Pocket Watch With Signed Chicago Dial Illinois; Man's; Serial # 209257; Circa Date: 1878

CASE: No. 2751498. This rose-gold-filled, 18 size, hunter case features floral/barleycorn/geometric & bird decorations and is signed "J. Boss 15 Years."

DIAL: White porcelain, double sunk dial displays Roman numerals, Fleur-de-lis hands and is signed "Chicago."

MOVT: 15 Jewel, lever-set movement No. 209257, lever escapement, nickel, 3/4-plate, is signed.

C 3	D 2	M 3	R 7
-----	-----	-----	-----

Experts Opinion: Very sharp watch with a great case and dial – original!

Price: \$625.00

19. New/Old Stock 16 Size 14K Gold 17 Jewel Elgin Hunters Case "One Of The Most Beautiful Cases We Have Had In A Long While"

Elgin (Illinois); Man's; Serial # 21348263; Circa Date: 1918

CASE: No. 850446. 14K rose gold, 16 size, hunter case features floral/barleycorn & village decorations and is signed "JSWC Co. 14K."

DIAL: This white porcelain, double sunk dial displays Arabic numerals, spade hands, and is signed "Elgin."

MOVT: 17 Jewel, stem-set movement No. 21348263, lever escapement, nickel, 3/4-plate, is signed.

C 1	D 1	M 1	R 8
-----	-----	-----	-----

Experts Opinion: Fancy scroll monogram in crest. Afraid to open this case with any tool, unbelievable condition for a 100 year-old watch! Will sell quickly – so call now!

Price: \$1,175.00

20. Heavy 18K Gold 10 Size Enameled Lady's Elgin Key Wind Hunters Case Pocket Watch (TW .51 dwts.)

Elgin (National); Unisex; Serial # 79728; Circa Date: 1870

CASE: No. 8226, 18K yellow gold, 10 size, hunter case, featuring floral/barleycorn/geometric/enamel decorations and is signed "18K."

DIAL: This white porcelain, single sunk dial displays Roman numerals, Breguet hands, and is signed "N W Co."

MOVT: 15 Jewel, keyset, movement No. 79728, lever escapement, gilt, 3/4-plate, is signed.

C 3	D 3	M 3	R 6
-----	-----	-----	-----

Experts Opinion: Very heavy in gold, very good quality engraving and enamel trim. A very nice investment piece!

Price: \$1,525.00

21. 14K 12 Size Box Hinge (5-Color) Multi Colored Gold Elgin 17 Jewel Hunters Case Pocket Watch

Elgin; Unisex; Serial # 25137420; Circa Date: 1922

CASE: No. 882241. 14K multi-color (5 colors) gold, 12 size, hunter/box hinge case featuring floral/machined/geometric decorations and is signed "Roy 14K."

DIAL: This white porcelain, single sunk dial displaying Arabic numerals, spade hands, and signed "Elgin."

MOVT: 17 Jewel, stem-set, movement No. 25137420, lever escapement, nickel, 3/4-plate, is signed.

C 3	D 3	M 2	R 7
-----	-----	-----	-----

Experts Opinion: Fancy monogram in center crest. Soon to become a very rare collector's watch! The melting pot has reduced the number of these beauties tremendously. This one is a sweetie!

Price: \$1,875.00

22. Exceptional 18 Size 14K Box Hinge 4-Color Gold Multi 17 Jewel P. S. Bartlett Waltham Pocket Watch

Waltham; Man's; Serial # 16132072; Circa Date: 1907

CASE: No. 6386079. The 14K multicolor gold, 18 size hunter/box hinge case features floral/barleycorn/stag decorations and is signed "B. W. C. Co. 14K."

DIAL: This white porcelain dial is single sunk and displays Arabic numerals, and spade hands. Signed "Waltham."

MOVT: 17 Jewel, lever-set, movement No. 16132072, lever escapement, nickel, 3/4-plate, is signed.

C 3	D 3	M 3	R 7
-----	-----	-----	-----

Experts Opinion: Center shield with fancy monogram. Big, fat, heavy and disappearing! A great buy for your son or daughter's future!

Price: \$4,400.00

23. Rarer 16 Jewel Model 72 Waltham 14K Hunter Case Pocket Watch with Very Collectible Presentation

Waltham; Man's; Serial # 1561738; Circa Date: 1891

CASE: No. 120540, Plain 14K Rose gold, 16-size, hunter case featuring floral decorations & is signed "Waltham 14K."

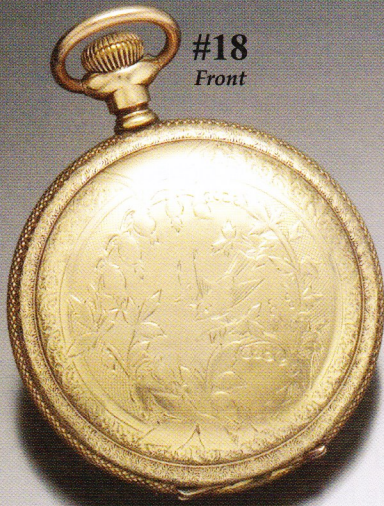
DIAL: This white, porcelain dial is single sunk, displays Arabic numerals, spade hands, and is signed "A. W. Co. Waltham."

MOVT: 16 Jewel, lever-set, movement No. 1561738, lever escapement, nickel, 3/4-plate, is signed.

C 3-16	D 3	M 3-6	R 7-1/2
--------	-----	-------	---------

Experts Opinion: Awarded by the Wool & Cotton Reporter Rawlins, Wyoming for the largest yield of wool per fleece in 1891. A rare movement, original case and great historical value!

Price: \$2,050.00



#18
Front



#19
Back



#18
Dial



#19
Dial



#20



#21



#22



#23
Dial



#23
Dust
Cover

24. Massive 14K Gold Howard N Size Open Face Gent's Pocket Watch

Howard; Man's; Serial # 300696; Circa Date: 1885

CASE: No. 49436. 14K rose gold, 18 size, open face case features plain/geometric decorations, signed "J. S."

DIAL: This white, porcelain/single sunk dial displays Arabic numerals, Howard umbrella hands, and is signed "E. Howard & Co. Boston."

MOVT: 15 Jewel, stem-set, movement No. 300696, lever escapement, nickel, 3/4-plate, is signed.

C 3	D 3-43	M 3	R 6-1/2
-----	--------	-----	---------

Experts Opinion: Fancy crest monogram on case back. (TW 86 dwts.) Massive in gold value, this rarity is a fair buy for an inflation hedge!

Price: \$2,550.00

25. Extremely Rare 18K Breguet Open Face Pocket Watch #1173

Breguet (Swiss); Man's; Serial # 1173; Circa Date: 1890

CASE: No. 9738. This plain 18K rose-gold, 14 size, open face case is signed "Breguet #1173."

DIAL: White porcelain/single sunk dial displaying Roman numerals and spade hands.

MOVT: 16 Jewel, pin-set, movement No. 1173, lever escapement, gilt, bridge style, is unsigned.

C 3	D 3	M 3	R 8-1/2
-----	-----	-----	---------

Experts Opinion: Case back monogram (fancy), sold through the Breguet firm under the Breguet name! One of only two watches of this period we have ever owned. Extra-rare!

Price: \$5,050.00

26. Extremely Rare & Spectacular 18/20K Gold Musical Vinaigrette Box Fully Carved & Mint Condition

Swiss; Unisex; Circa Date: 1840

CASE: Measures 32 x 27 x 12mm. 18K/22K yellow gold case displaying floral/barleycorn/geometric decorations.

MOVT: This is a gilt keyset movement.

C 3	M 3	R 8-1/2
-----	-----	---------

Experts Opinion: Controlled by a small slide, when wound it plays music. Top opens to reveal scent location. Exceedingly rare item!

Price: \$3,050.00

27. Rare & Marvelous 18K Red-Gold Le Coultre Minute Repeater Open Face Gent's Pocket Watch

Le Coultre; Man's; Serial # 2973; Circa Date: 1890

CASE: No. 2973. 18K Red gold, 17/18 size, 52mm, open face, case displaying floral/machined, signed, numbered and 1889 Paris Exposition.

DIAL: White porcelain, single sunk dial displays Arabic numerals and filigree hands.

MOVT: 30 Jewels, pin-set, movement No. 2973 is fully adjusted with lever escapement, nickel, wolfs tooth winding wheels, bridge style, and signed "Le Coultre" under strike hammer.

C 2-30	D 2	M 3-6	R 7
--------	-----	-------	-----

Experts Opinion: Good looking Le Coultre signed inner strike hammer and in red 18K gold hi-grade movement with wolfs tooth winding wheels. Only flaw on watch is a small damage from opening tool (virtually invisible), otherwise perfect!

Price: \$6,550.00

28. Scarce Irish Verge Fusee (Dublin) Pocket Watch with Silver Pair Case & Fancy Scenic Dial & Key

John Grover (Dublin, Ireland); Man's; Serial # 18855; Circa Date: 1758

CASE: The 18 Size, plain sterling silver pair case is signed "J. W."

DIAL: This fancy porcelain dial displays a goat, carriage and village scene. The dial exhibits Roman numerals and spade hands.

MOVT: Gilt, keyset movement with verge/fusee escapement, full plate and signed.

C 3	D 3-44	M 3	R 7
-----	--------	-----	-----

Experts Opinion: Unlisted maker, fully unsigned. Early Irish watches are quite collectible!

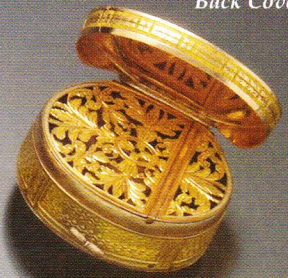
Price: \$1,400.00



#24



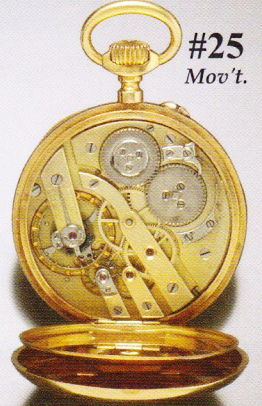
#25
Front



#26
Open
Also on
Back Cover



#25
Dust
Cover



#25
Mov't.



#27
Mov't.



#27



#27
Dust
Cover



#28

29. Early Verge Fusee Pair Case Pocket Watch with Hand Painted Porcelain Dial, English Origin & Key

George Brougham (Liverpool, England); Man's; Serial # 8766; Circa Date: 1774

CASE: No. 8766. A plain sterling silver, 18 size pair case signed "T. B."

DIAL: This fancy porcelain dial displays a sailing vessel and village scene, Roman numerals, and spade hands.

MOVT: This gilt, full plate, keyset movement No. 8766 has a verge/fusee escapement and is signed.

C 3	D 3-53	M 3	R 7
-----	--------	-----	-----

Experts Opinion: Another great & disappearing breed verge fusee with painted dial. Who doesn't want one? Maker later moved to Baltimore and set up business there.

Price: \$1,275.00

30. 18K Verge Fusee Multi-Colored Repousse Swing-Out Gent's Pocket Watch & Key

Swiss; Man's; Circa Date: 1800

CASE: This 18K multicolor gold case is 16 Size, open face, swing-out, and features floral/machined/geometric/repousse.

DIAL: A white porcelain dial displaying Arabic numerals and filigree hands.

MOVT: This gilt movement is keyset, verge/fusee escapement, full plate, and unsigned.

C 3	D 3-44	M 3	R 7
-----	--------	-----	-----

Experts Opinion: A wonderful case maker was used to create this lovely case. Seldom offered!

Price: \$2,425.00

31. Oh My! Phenomenal Cherry Form 18K/Red Enamel Bezel Wind Form Pocket Watch Of The Highest Grade

Swiss; Unisex; Circa Date: 1880-1890

CASE: This 18K yellow gold case features ridged bezel wind and deep rich entrancing red enamel.

DIAL: White, porcelain, Arabic numerals, and spade hands.

MOVT: Pin-set movement with lever escapement, gilt, full plate, and unsigned.

C 2	D 2	M 2	R 9
-----	-----	-----	-----

Experts Opinion: In Tiffany cloth bag. 40 Years in this field and when something takes your breath away, I don't know how to describe it. Closed – a cherry, opened – 18K bezel wind tiny quality 1 movement – unforgettable! When you hold this watch in your hand, you know it's special!

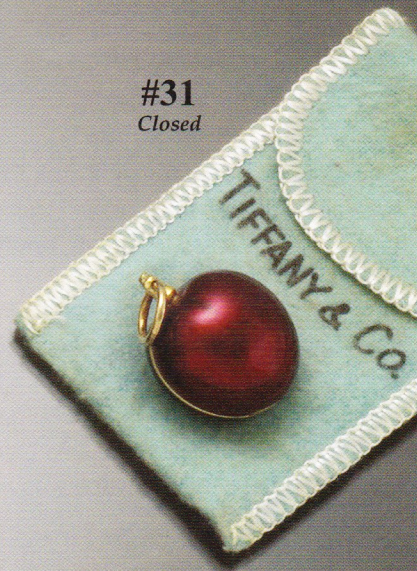
Price: \$7,550.00



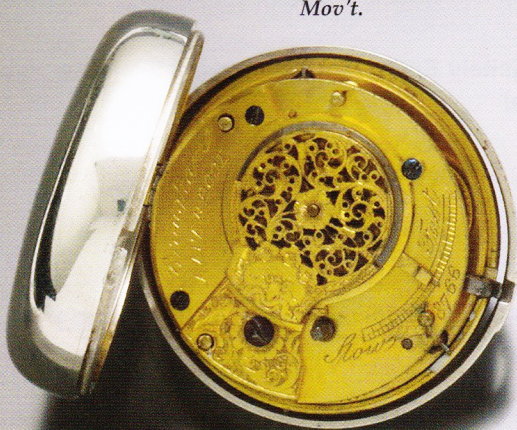
#27
Front



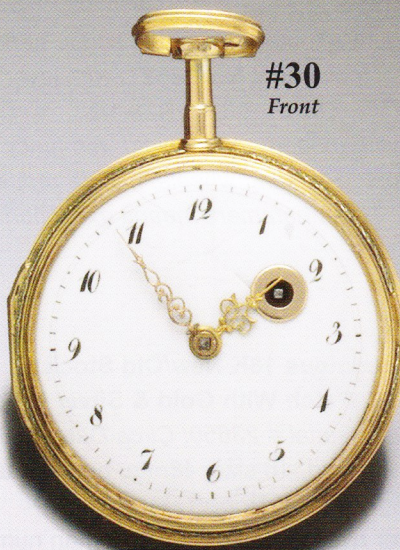
#30
Back



#31
Closed



#29
Mov't.



#30
Front



#31
Open

32. New/Old Stock Gold on Silver 1/4-Hour Repeating Automaton with Striking Jackhammers 18 Jewel Swiss Pocket Watch (Unheard Of)

Swiss; Man's; Serial # 77784; Circa Date: 1890

CASE: No. 77784. A rose gold plate/sterling silver, 16 size, hunter case with barleycorn/geometric design and signed “.935.”

DIAL: This fancy blue/gold porcelain dial displays Arabic numerals and filigree hands.

MOVT: An18 Jewel, lever-set, movement No. 77784 with lever escapement, gilt, 3/4-plate, and unsigned.

C 1	D 1-44	M 1	R 9
-----	--------	-----	-----

Experts Opinion: How can a 120 year old watch remain in this condition? This watch was never carried, virtually as new, only age hairline on dial. Amazing watch of extreme desirability! You can search the rest of your life and not come close to this watch!

Price: \$7,900.00

33. 5-Minute Repeater by Patek Philippe Made For Bailey Banks & Biddle Pocket Watch

Patek – Bailey Banks & Biddle; Man's; Serial # 65078; Circa Date: 1892

CASE: No. 65078 16. A 48mm, open face 18K rose gold, plain case with Jurgensen style lips and signed “P. P. & Co. & Bailey Banks & Biddle, Philadelphia.”

DIAL: This white porcelain dial displays Roman numerals, baton hands and is signed “Bailey Banks & Biddle, Philadelphia.”

MOVT: A 30 Jewel, stem-set, No. 65078, special movement with lever escapement, nickel, bridge style, and signed “Bailey Banks & Biddle.”

C 3	D 2	M 3-8	R 8
-----	-----	-------	-----

Experts Opinion: Patek archived Certificate. Back case ribbon monogram. A clean looking repeater by Patek Philippe – the ultimate timepiece! This watch was made for Bailey Banks & Biddle. Signed case P & P & Co. a prize for any collection!

Price: \$8,300.00

34. Oversized 18K 3 Hammer Carillon Chime Minute Repeater Pocket Watch Cased In An Extraordinary Fully Carved Pink-Gold Hunter Case - Wow

Swiss; Man's; Serial # 34527; Circa Date: 1890's

CASE: No. 34527, This 18 size, 55mm, hunter 18K rose gold case displays Jurgensen style lips, and decorations including fully engraved dog – deer chase.

DIAL: White, porcelain/single sunk, Roman numerals, spade hands.

MOVT: This 32 Jewel, lever-set, movement No. 34527, with lever escapement, is nickel, bridge style, unsigned.

C 3	D 2	M 3	R 8-1/2
-----	-----	-----	---------

Experts Opinion: Front cover with monogram in shield. Big fancy dog on deer chase, 18K hunter case big Jurgensen style lips and super hi-grade 32 jewel frosted winding wheels, minute repeater with carillon chimes. This watch is rarely seen in a repeater, runs and strikes well. Three hammers means exceptional quality. These carillon watches have set record highs at auctions lately!

Price: \$8,800.00

35. Crème de Le Crème – Miraculous 18K New/Old Stock 17 Size Exquisitely Engraved & Enameled 5-Minute Swiss Hunters Case Repeater Pocket Watch With Gold & Silver Embossed Dial

Robert Maret (Neuchatel); Man's; Serial # 23650; Circa Date: 1885

CASE: No. 23650. This 18K rose gold, 16 size, 48mm, hunter case, features floral/barleycorn/geometric/enamel decorations with gargoyle's. The case is signed “18K Robert Maret.”

DIAL: This fancy gold and silver overlay dial displays Roman numerals, spade hands, and is signed “Robert Maret, Neuchatel.”

MOVT: 31 Jewel, pin-set movement No. 23650 that is fully adjusted, has a lever escapement, nickel, bridge style, and unsigned.

C 1	D 2	M 2-8	R 9
-----	-----	-------	-----

Experts Opinion: We have never seen such a case. The master who enameled this miracle of a case could only have been one of the greatest of his time. Amazing dial, exceptional quality movement and a case 2nd to none! A watch that is very difficult for me to offer for sale!

Price: \$17,550.00



#32
Front
Also on
Front Cover

#33

#35
Back
Also on
Back Cover

#34
Front
Also on
Back Cover



#32
Dial

#34
Dial

#35
Front

36. 14K Swiss 17 Jewel Ollandorff (Tiffany & Co.) Retro Diamond & Sapphire Covered Bracelet Watch

Ollandorff; Swiss; Lady's; Circa Date: 1950s
STYLE: Length lug-to-lug 40mm, width 15mm without crown, length with band 6-3/4", thickness 10mm.
CASE: White & rose gold, rectangular case featuring hidden/curved lugs, diamond/sapphire bezel, and snap back.
BAND: A flexible 14K gold matching band weighing 31.5 dwts.
DIAL: This off-white dial displays Arabic numerals, minute/5-minute track, spade hands.
MOVT: Manual wind, No. 51889 movement with 17 jewels, lever escapement, stem-set, and signed.

C 3 D 3-28 M 3 R 6

Experts Opinion: Case is designed to plunge top décor and cover flips open to read time. An exceptional example of the Retro design of the 1950's! Plenty of gold and dial signed "Tiffany."

Price: \$2,050.00

37. 14K Piaget Diamond Bracelet Wrist Watch With 1.84 Carats of Diamonds

Piaget; Swiss; Lady's; Circa Date: 1960s
STYLE: Length lug-to-lug 30mm, width 18mm without crown, length with band 6-7/8", thickness 7mm.
CASE: This 14K white gold round case features hidden lugs, diamond bezel, and snap back.
BAND: This flexible, diamond & 14K gold was made for watch.
DIAL: This silver dial displays markers and baton hands.
MOVT: Manual wind movement with 17 jewels, lever escapement, stem-set, and signed.

C 3 D 3 M 3 R 6-1/2

Experts Opinion: Double rows of diamonds embellish this wonderful band, fully carved sides give this special timepiece a step up on others. 1.84 Carats of diamonds round this gem off!

Price: \$3,050.00

38. Gent's Illinois Prince White-Gold Filled Watch

Illinois; U. S.; Man's; Circa Date: 1927
STYLE: Length lug-to-lug 38mm, width 33mm without crown, thickness 8mm.
CASE: No. 966594, Prince. White-gold-filled case with 8 sides featuring curved lugs and snap back.
DIAL: This silver dial displays Arabic numerals, minute/5-minute track, spade hands, and subsidiary seconds.
MOVT: Manual wind movement No. 4835552 with 17 jewels, lever escapement, stem-set, and signed.

C 3 D 3 M 3 R 6

Experts Opinion: Back case monogram JMR 3/19/27! The Illinois wrist watch is the fastest selling wrist watch we get. Hurry on this on!

Price: \$400.00

39. Super Illinois "Male" White-Gold Filled Wrist Watch For the Gent

Illinois; U. S.; Man's; Circa Date: 1930
STYLE: Length lug-to-lug 37mm, width 32mm without crown, thickness 7mm.
CASE: No. 567893, Male. White-gold-filled case with 6 sides featuring curved lugs, carved bezel, and snap back.
DIAL: This silver dial displays Arabic numerals, minute/5-minute track, spade/radium hands, and subsidiary seconds.
MOVT: Manual wind movement No. 5206253 with 17 jewels, lever escapement, stem-set, and signed.

C 3 D 3 M 3 R 7

Experts Opinion: Another quick sell! This all original Illinois has a great look!

Price: \$450.00

40. Sought After 46mm Gruen Gold-Filled Curvex Gent's Wrist Watch with Mint Two-Tone Dial

Gruen; Swiss; Man's; Circa Date: 1938-42
STYLE: Length lug-to-lug 46mm, width 25mm without crown, thickness 7mm.
CASE: No. 3108321. Yellow-gold-filled rectangular case featuring oversized/curved lugs and snap back.
DIAL: This two-tone dial displays Arabic numerals, minute/5-minute track, baton hands, and subsidiary seconds.
MOVT: Manual wind movement No. 354675 with 17 jewels, lever escapement, stem-set, and signed.

C 3 D 2 M 2 R 7-1/2

Experts Opinion: Great dial, Wall Street look (is that good?) A wonderful timepiece for the executive early Retro kind of guy!

Price: \$1,025.00

41. 14K Deep Red-Gold Gruen Curvex Unisex Wrist Watch with Two-Tone Dial

Gruen; Swiss; Unisex; Circa Date: 1938
STYLE: Length lug-to-lug 40mm, width 23mm without crown, thickness 6mm.
CASE: No. G515916, REF. #440. This 14K red gold rectangular case features oversized/curved lugs and snap back.
DIAL: This red and white two-tone dial displays Arabic numerals, minute/5-minute track, spade hands and subsidiary seconds.
MOVT: Manual, No. 4422. 17 jewel movement with lever escapement, stem-set, and signed.

C 2 D 2 M 2 R 7-1/2

Experts Opinion: Amazing color and great dial – the watch of watches. Will draw attention!

Price: \$1,300.00

42. Scarce & Seldom Offered Gruen Gold-Filled Drivers Wrist Watch

Gruen; Swiss; Unisex; Circa Date: 1940s
STYLE: Length lug-to-lug 37mm, width 21mm without crown, thickness 18mm.
CASE: A rose-gold-filled, rectangular case featuring oversized/curved lugs, engraved bezel, and snap back.
DIAL: This off-white dial displays Arabic numerals, minute/5-minute track, Breguet hands, and subsidiary seconds.
MOVT: A manual wind, 17 jewel movement with lever escapement, stem-set, and signed.

C 3 D 3-28 M 3 R 7-1/2

Experts Opinion: Made to wear on the outer part of the side wrist. This would allow a driver to tell time without releasing the steering wheel. Quite rare in decent condition!

Price: \$1,500.00

43. Unusual Cutaway Cased Wittnauer Automatic Gold-Filled Gent's Wrist Watch

Wittnauer; Swiss; Man's; Circa Date: 1940s
STYLE: Length lug-to-lug 40mm, width 30mm without crown, thickness 8mm.
CASE: No. 960052. This yellow-gold-filled, rectangular shaped case features curved lugs, rare cutaway case and snap back.
DIAL: This silver dial displays Arabic/markers, baton hands, and subsidiary seconds.
MOVT: Manual wind 17 jewel movement with lever escapement, stem-set and signed.

C 3 D 3 M 3 R 6

Experts Opinion: Early automatic in an unusual style case. I like it!

Price: \$375.00



#36
Closed
Also on
Back Cover

#37

#38

#39

#36
Open



#40

#41

#42

#43

#42
Side

44. Rare 14K Asymmetrical Accutron 218 Wrist Watch W/ Date

Bulova; Swiss; Man's; Circa Date: 1960s
STYLE: Length lug-to-lug 43mm, width 63mm without crown, thickness 8mm.

CASE: No. J682689 Cal. 218. Asymmetrical 14K yellow gold case featuring curved lugs and screw back.

DIAL: This off-white dial displays Arabic/markers, minute/5-minute track, baton/radium hands, center sweep seconds, and date windows.

MOVT: This electric movement is stem-set and signed.

C 3 D 2-6 M 3 R 7

Experts Opinion: We do not see this model in gold very often. Bulova made very heavy gold cases for the Accutron series. A nice collector's item!

Price: \$775.00

45. Very Desirable Gold & Steel Omega Constellation with Date Gent's Watch w/Original Block Pie Pan Dial & Original Buckle

Omega; Swiss; Man's; Circa Date: 1960

STYLE: Length lug-to-lug 43mm, width 35mm without crown, thickness 8mm.

CASE: No. 14381, REF # 5 SC. A steel & yellow gold round, case featuring curved lugs and screw back.

DIAL: This rose color dial features pie pan shape, markers, minute/5-minute track, baton/radium hands, center sweep, and date windows.

MOVT: Automatic movement No. 17727741 with 24 jewels, lever escapement, stem-set, and signed.

C 3-15 D 3 M 3 R 8

Experts Opinion: Extra rare dial sets this watch into a category of its own. Rare is an understatement!

Price: \$900.00

46. 14K Gent's Ultra-Thin Omega Dress Wrist Watch

Omega; Swiss; Man's; Circa Date: 1970

STYLE: Length lug-to-lug 40mm, width 34mm without crown, thickness 4mm.

CASE: No. 504710, REF. # D6672. This round 14K yellow gold case features curved lugs and snap back.

DIAL: This off-white dial displays markers and baton hands.

MOVT: A manual wind, 17 jewel movement with lever escapement, stem-set, and signed.

C 3 D 3-8 M 3 R 5

Experts Opinion: Most oxidation is covered by bezel. A good-looking dress watch with a fine name! (We can have dial re-finished if you wish).

Price: \$625.00

47. Unusual 14K Omega Gent's Dress Watch with Seldom Seen Black Dial with Diamond Marker

Omega; Swiss; Man's; Circa Date: 1970

STYLE: Width 32.6mm without crown.

CASE: No. 593396, REF. # D6672. This round 14K yellow gold case features curved lugs and snap back.

DIAL: This black dial displays diamond markers (One 12:00 marker with diamonds) and baton hands.

MOVT: Manual wind movement No. 29713388 with 17 jewels, lever escapement, stem-set, and signed.

C 3 D 2 M 3 R 7

Experts Opinion: A real looker, seems as though it was a counter reaction to the Movado museum? Only one we have ever owned!

Price: \$675.00

48. Commendable Omega 14K Square Gent's Wrist Watch with Original Black Dial

Omega; Swiss; Unisex; Circa Date: 1966

STYLE: Length lug-to-lug 32mm, width 26mm without crown, thickness 5mm.

CASE: No. 655289, REF. # D6624. This square 14K yellow case features curved lugs and a snap back.

DIAL: The black dial displays markers and baton hands.

MOVT: This 17 jewel, manual wind movement is stem-set & signed.

C 3 D 3 M 3 R 6-1/2

Experts Opinion: Another nice black dial Omega for the man of the house! Omegamania!

Price: \$575.00

49. Sexy Retro 14K Longines Unisex Wrist Watch

Longines; Swiss; Unisex; Circa Date: 1960s

STYLE: Length lug-to-lug 36mm, width 30mm without crown, thickness 8mm.

CASE: An oversized 14K yellow gold tonneau shape case featuring curved lugs and a snap back. Great design!

DIAL: The gold dial displays Arabic/markers, baton hands, and subsidiary seconds.

MOVT: This manual wind, 17 jewel movement has lever escapement, is stem-set, and signed.

C 3 D 3 M 3 R 7

Experts Opinion: What a great Retro style. These are the collector's items of the future. Heavy with gold and made by Longines!

Price: \$650.00

50. 14K Stately Longines Rectangular Gent's Wrist Watch with Textured Dial

Longines; Swiss; Man's; Circa Date: 1960

STYLE: Length lug-to-lug 35mm, width 25mm without crown, thickness 7mm.

CASE: No. 4207556, REF. # 2559-370. A 14K yellow gold rectangular shape case featuring peaked bezel and snap back.

DIAL: This dial features a textured finish, markers, baton hands, and subsidiary seconds.

MOVT: No. 11730183. A manual wind 17 jewel movement with lever escapement, stem-set, and signed.

C 3 D 3 M 3 R 6

Experts Opinion: Very handsome timepiece for the executive that cares!

Price: \$525.00

51. 14K Longines Rectangular Gent's Wrist Watch with Diamond Dial

Longines; Swiss; Man's; Circa Date: 1947

STYLE: Length lug-to-lug 38mm, width 24mm without crown, thickness 7mm.

CASE: No. T752840. 14K yellow gold, rectangular case featuring curved lugs and snap back.

DIAL: This silver dial features diamond markers, minute/5-minute track, baton hands, and subsidiary seconds.

MOVT: No. 7519227. A manual wind 17 jewel movement with lever escapement that is stem-set and signed.

C 3 D 3-28 M 3 R 6

Experts Opinion: Diamond dial comes in a great variety – this is one of the best layouts, not gaudy but does make a statement!

Price: \$650.00

52. 10K Gold Hamilton Automatic Center Sweep Gent's Wrist Watch In An Unusual & Unlisted Case Style

Hamilton; Swiss; Man's; Circa Date: 1950s

STYLE: Length lug-to-lug 44mm, width 34mm without crown, thickness 8mm.

CASE: This round 10K yellow gold, oversized case features curved/great style lugs and a snap back.

DIAL: An off-white dial displaying Arabic/markers, minute/5-minute/1/5-second track, baton hands, and center sweep

MOVT: This Automatic, 17 jewel movement has a lever escapement, is stem-set, and signed.

C 3 D 3 M 3 R 7-1/2

Experts Opinion: A very good looking Hamilton automatic. Rare & quality!

Price: \$575.00

53. 14K Top Hat Hamilton Gent's Wrist Watch with Black Fully Diamond Dial (Plated White Case)

Hamilton; Swiss; Man's; Circa Date: 1940s

STYLE: Length lug-to-lug 37mm, width 22mm without crown, thickness 7mm.

CASE: REF. # 982. A 14K yellow case plated white, rectangular shape, fancy/covered/hidden lugs, top hat, and snap back.

BAND: Snake

DIAL: This black dial displays diamonds (full diamond dial), Arabic/markers, baton hands, and subsidiary seconds.

MOVT: Manual wind movement No. J250211 with 19 jewels, a lever escapement, stem-set, and signed.

C 3-28 D 3-28 M 3 R 7

Experts Opinion: (Yellow case was plated white). All in all – a wonderful looking Hamilton!

Price: \$1,900.00



54. Zodiac SST Astrographic Man's Bracelet Wrist Watch & Papers with Mystery Style Dial w/Certificate

Zodiac; Swiss; Man's; Circa Date: 1970s

STYLE: Length lug-to-lug 40mm, width 37mm without crown, thickness 12mm.

CASE: This stainless, rectangular shape case features hidden lugs and screw back.

BAND: Flexible, original Zodiac bracelet and buckle.

DIAL: Blue with see-through glass dial featuring markers, minute/5-minute/1/5-second track, baton hands (2 hands seem to float around dial), center sweep seconds, red dot floats in the air, and date windows.

MOVT: No. 1934 094. This automatic 17 jewel movement has a lever escapement, is stem-set, and signed.

C 3 D 3 M 3 R 5

Experts Opinion: (Two small scratches on crystal). Made with space travel in mind, this exciting watch shows the depth of creativity in the Zodiac firm. Quick sell! The dial is a mystery style with no visible hand attachments - cool!

Price: \$525.00

55. Rare 9K Gold Dennison Oyster Cased Waltham Unisex Wrist Watch with Porcelain Dial

Waltham; England; Unisex; Circa Date: 1940s

STYLE: Length lug-to-lug 33mm, width 31mm without crown, thickness 10mm.

CASE: No. 656850, REF. # 219. A 9K rose gold round case featuring curved lugs, reeded bezel, oyster and screw front bezel.

DIAL: This white dial displays Arabic numerals, minute/5-minute track, Breguet hands, and subsidiary seconds.

MOVT: A manual wind 21 jewel movement with temperature, lever escapement, stem-set, and signed.

C 3 D 3 M 3 R 8

Experts Opinion: It appears to be a Military wrist watch but no markings. A very sharp and rare oyster case - made for someone special!

Price: \$1,000.00

56. 14K Baume & Mercier Quartz Ultra-Thin Gent's Dress Wrist Watch With Original Band & Buckle

Baume & Mercier; Swiss; Unisex; Circa Date: 1980s

STYLE: Length lug-to-lug 37mm, width 34mm without crown, thickness 3mm.

CASE: No. 2280720, REFD. # 95612, 14K, yellow, round, 2-tier, snap back.

BAND: Alligator, Baume & Mercier band and Baume & Mercier buckle.

DIAL: White dial displaying Roman numerals & baton hands.

MOVT: This quartz movement is stem-set and signed.

C 3 D 3 M 3 R 6

Experts Opinion: Clean and ready to wear. Elegant watch for the professional!

Price: \$775.00

57. 18K Lady's International Watch Company Bracelet Watch International Watch Co.; Swiss; Lady's; Circa Date: 1957

STYLE: Length lug-to-lug 17mm, width 17mm without crown, length with band 5-3/4", thickness 5mm.

CASE: No. 1554538, REF. # 431. A round, 18K yellow gold case with hidden lugs and a snap back.

BAND: This flexible 18K gold, IWC band weighs 14.3 dwts.

DIAL: This off-white dial displays markers & baton hands.

MOVT: This manual wind movement No. 1453598 has 17 jewels, a lever escapement, is stem-set, and signed.

C 2 D 2 M 2 R 7

Experts Opinion: Case, dial and movement signed IWC. An awesome watch for your loved one!

Price: \$925.00

58. Very Clean & Scarce Le Coultre Gold-Filled with Center Sweep & Date Rotating Disc Man's Wrist Watch

Le Coultre; Swiss; Man's; Circa Date: 1950s

STYLE: Length lug-to-lug 40mm, width 34mm without crown, thickness 7mm.

CASE: A round rose-gold-filled case with snap back.

DIAL: This two-tone off-white and gold dial displays markers, minute/5-minute track, baton hands, center sweep, and date track with rotating disc indicator.

MOVT: A 17 jewel, manual wind movement with lever escapement, stem-set, and signed.

C 3 D 3 M 3 R 6-1/2

Experts Opinion: Usually found in 14K gold. This scarce gold-filled version should draw some interest. Clean and hard to find!

Price: \$525.00

59. Exceptional 14K Concord Ortz Lady's Rectangular with Diamond Bracelet Wrist Watch

Concord; Swiss; Lady's; Circa Date: 1980

STYLE: Length lug-to-lug 30mm, width 22mm without crown, length with band 6-1/2", thickness 6mm.

CASE: A 14K yellow gold rectangular case featuring hidden lugs, diamond bezel and snap back.

BAND: This is the original matching flexible band and buckle by Concord. The bracelet style band weighs weight 32.5 dwts.

DIAL: The white two-tone dial displays Roman numerals, minute/5-minute track, and baton hands.

MOVT: This quartz movement is stem-set and signed.

C 3 D 2 M 2 R 6

Experts Opinion: Two rows of top quality diamonds make this a very special gift. Mucho gold and a great Deco look!

Price: \$1,525.00

60. Gold-Filled & Steel Gent's Square Button Chronograph Pink Dial Watch W/30-Minute Register by Invicta

Invicta/Seeland; Swiss; Man's; Circa Date: 1940s

STYLE: Length lug-to-lug 40mm, width 35mm without crown, thickness 8mm.

CASE: No. 32637. This round case is rose-rolled-gold-plate/stainless and features curved lugs and snap back.

DIAL: A rose colored dial displaying Arabic numerals, and minute/5-minute/1/5-second/telemeter track.

MOVT: This manual wind, 17 jewel movement has a lever escapement, is stem-set, and signed.

C 3 D 3-28 M 3 R 6

Experts Opinion: If you like rose, red or pink - this is the watch for you! A great looking chronograph wrist watch!

Price: \$500.00

61. Oversized Girard Perregaux Steel Chronograph Wrist Watch with 30-Minute Register

Girard Perregaux; Swiss; Man's; Circa Date: 1940s

STYLE: Length lug-to-lug 48mm, width 39mm without crown, thickness 9mm.

CASE: A stainless, round case featuring curved lugs and snap back.

BAND: Alligator

DIAL: A rose color dial displaying Roman/markers, minute/5-minute/1/5-second/telemeter track, baton hands, subsidiary seconds, and 30-minute register.

MOVT: This manual wind 17 jewel movement has a lever escapement, is stem-set, and signed.

C 3 D 3 M 3 R 6-1/2

Experts Opinion: Oversized is in at the moment. This big steel chronograph is pretty clean and ready to wear!

Price: \$575.00

62. Zodiac Steel Tachymetre Chronograph Wrist Watch with Date & Two-Tone Dial

Zodiac; Swiss; Man's; Circa Date: 1970s

STYLE: Length lug-to-lug 42mm, width 40mm without crown, thickness 10mm.

CASE: No. 792844. A stainless tonneau shape case with a screw back.

DIAL: This two-tone white and black dial displays markers, minute/5-minute/1/5-second/tachymeter track, baton hands, subsidiary seconds, and 30-minute/date windows.

MOVT: This manual wind 17 jewel movement has lever escapement, is stem-set and signed.

C 3 D 3 M 3 R 7

Experts Opinion: A tough watch to find and an easy watch to sell. These are all our future investment watches (China & India are coming).

Price: \$800.00

63. Oversized Wakmann Tachymeter Round Button Chronograph With 12 Hour Register, Date Window, Day Dial (Rotating) & Center Recorder for 60-Minute Yachting Wrist Watch

Wakmann; Swiss; Man's; Circa Date: 1974

STYLE: Length lug-to-lug 48mm, width 42mm without crown, thickness 13mm.

CASE: REF. # 1341. This oversized yellow rolled gold plate, stainless; tonneau shape case has a snap back.

DIAL: Two-tone, gold, markers, minute/5-minute/1/5-second/tachymeter, baton/radium hands, subsidiary seconds, 60-minute register/12-hour register, date windows/calendar track/yachting time.

MOVT: Automatic, 17 jewel, lever escapement, stem-set, signed.

C 3 D 3 M 3 R 7-1/2

Experts Opinion: A very complex wrist watch made by a great company!

Price: \$1,600.00



64. Very Clean 14K Gold Lady's Rolex Cord Wrist Watch

Rolex; Swiss; Lady's; Circa Date: 1940s

STYLE: Length lug-to-lug 30mm, width 17mm without crown, thickness 8mm.

CASE: No. 57063. This oversized rectangular 14K yellow gold case has a snap back.

BAND: Cord

DIAL: This off-white dial displays Arabic/markers and baton hands.

MOVT: Manual wind 17 jewel movement with lever escapement, stem-set, and signed.

C 3 D 2 M 2 R 7

Experts Opinion: Usually found in well-used condition, this one is mint. A great gift idea!

Price: \$725.00

65. 9K Gold Lady's Bracelet Rolex Wrist Watch

Rolex; Swiss; Lady's; Circa Date: 1970

STYLE: Length lug-to-lug 17mm, width 17mm without crown, length with band 7-3/4", thickness 5mm.

CASE: No. 19628, 9K, yellow, round, hidden lugs, snap back.

BAND: Mesh, 9K gold, unmarked.

DIAL: Silver dial displaying Arabic/markers and baton hands.

MOVT: Manual wind movement Model #1401 with 18 jewels, lever escapement, stem-set, and signed.

C 2 D 2 M 2 R 6-1/2 Band C-25-33

Experts Opinion: A well-preserved Rolex with an extra-long bracelet. Seldom seen! (TW 29 grams)

Price: \$925.00

66. Very Much In Demand Rolex Explorer II Stainless REF.16570 w/Black Dial, Sapphire Crystal & Quick Set Watch

Rolex; Swiss; Lady's; Circa Date: 1991

STYLE: Length lug-to-lug 47mm, width 40mm without crown, thickness 11mm.

CASE: REF. # 16570. A stainless round case featuring oversized/curved lugs, enamel bezel and screw back.

BAND: This is the original bracelet style Rolex band.

DIAL: A black dial displaying markers, minute/5-minute track, Mercedes/radium hands, center sweep seconds, and date windows.

MOVT: This 31 Jewel, automatic movement No. 833273 has a lever escapement, is stem-set, and signed.

C 2 D 2 M 2 R 7-1/2

Experts Opinion: Green hologram still on back. A very desirable watch, seldom seen for re-sale! This one is mint thru & thru!

Price: \$4,050.00

67. Superb 18K Vacheron & Constantin Ultra-Thin Gent's Wrist Watch

Vacheron & Constantin; Swiss; Man's; Circa Date: 1958

STYLE: Length lug-to-lug 41mm, width 34mm without crown, thickness 3mm.

CASE: No. 527244, REF. #6115. An 18K yellow gold round case featuring curved lugs, plain, and snap back.

BAND: Crocodile

DIAL: Silver, markers, baton hands.

MOVT: This 17 jewel manual wind movement with lever escapement is stem-set and signed.

C 2 D 2 M 2 R 7

Experts Opinion: Vintage 50s factory new condition look - elegant dress Vacheron & Constantin for the astute collector!

Price: \$3,800.00

22

68. Exquisite 18K Vacheron & Constantin Gent's Wrist Watch with Fancy Lugs

Vacheron & Constantin; Swiss; Man's; Circa Date: 1980s

STYLE: Length lug-to-lug 38mm, width 33mm without crown, thickness 6mm.

CASE: No. 660325, REF. #92239. This 18K yellow gold round case features tear drop/curved lugs, snap back, and is tiered.

BAND: Lizard

DIAL: An off-white dial displaying Arabic/markers, minute/5-minute track, baton hands, and subsidiary seconds.

MOVT: This manual wind 21 jewel movement is fully adjusted with a lever escapement, stem-set, and is signed.

C 2 D 2 M 2 R 7-1/2

Experts Opinion: A mint 1980s Vacheron & Constantin dress wrist watch with Maltese Cross dial - written signature Vacheron & Constantin also on back lid with movement number. A beauty to say the least!

Price: \$4,400.00

69. 18K Patek Philippe Mans Wrist Watch Cushion Shape with Original Box & Crocodile Band with Gold Patek Philippe Buckle with Archives Extract Certificate

Patek Philippe; Swiss; Man's; Circa Date: 1971

STYLE: Length lug-to-lug 37mm, width 34mm without crown, thickness 5mm.

CASE: No. 1156219, REF. # 3544. 18K yellow gold cushion shape case with curved lugs and a snap back.

BAND: Comes with the original Patek factory 300 crocodile strap - 18K Patek Philippe gold buckle.

DIAL: Off-white dial displaying Roman numerals & baton hands.

MOVT: This 18 jewel manual wind movement is fully adjusted with lever escapement is stem-set, and signed.

C 2 D 3-15 M 2 R 6-1/2

Experts Opinion: Original red Patek Philippe Box - Patek extract papers. Good looking big cushion Patek factory strap Patek Philippe - original Patek Philippe box, Patek Philippe 18K gold buckle ready to wear, fully packaged and original dial, triple signed by Patek Philippe. Hardly noticeable pin-point spots on dial.

Price: \$5,800.00

70. 18K Yellow Gold Triple Signed Patek Wrist Watch with Patek Papers

Patek; Swiss; Man's; Circa Date: 1970

STYLE: Length lug-to-lug 41mm, width 35.5mm without crown, thickness 7mm.

CASE: No. 2693318, REF # 3569. An 18K yellow gold round case featuring curved lugs, a screw back, and is tiered.

BAND: Lizard

DIAL: This silver dial displays markers, minute/5-minute track, baton/radium hands, and center sweep.

MOVT: The 28 jewel automatic movement No.

SN1491683, is fully adjusted, has a lever escapement, back-set, and is signed.

C 2 D 2 M 2 R 8

Experts Opinion: Patek papers extract from the archives. 35.5mm 18K gold scarce back set 28 jewel, screw back waterproof, automatic. Big impressive Patek with sweep seconds, triple signed. As mint as they come! Wonderful 18K gold automatic back set Patek Philippe man's heavy gold wrist watch with archive papers. A very clean looking wrist watch!

Price: \$8,300.00



#64

#65

#66

#67



#68
Also on
Back Cover

#69
With Box &
Certificate
Also on
Back Cover

#70
With
Certificate
Also on
Front Cover

#68
Back

#70
Back



ASHLAND
continues to be a
major buyer...

in the field of horology and vertu with extreme
purchasing power. Please give ASHLAND the
opportunity to make an offer on your valued collection
when the time comes to liquidate your investment.

- * Informative Articles
- * Market Updates
- * Calendar of Events
- * Appraisals
- * Authentication Service
- * And Much More...

Now Live!
Grand Opening of

eAshland.net
Watch Collector's Network

- * Pocket Watch Sales
- * Wristwatch Sales
- * Jewelry Sales
- * Auctions
- * Accessories
- * Ephemera

Richard M. Gilbert