

ASHLAND

A Catalog of Fine and Important Clocks



Call Toll Free
1-800-424-5353

or call
1-941-957-3760

FAX
1-941-365-4931

SUITE 200, 640 SOUTH WASHINGTON BLVD. • SARASOTA, FL 34236-7137



ASHLAND

1-800-424-5353
OR
1-941-957-3760
FAX
1-941-365-4931

- A. Due to rapid sales, ordering by phone is recommended. Please ask for RICK GILBERT or JIM MILLER at
B. Please make checks or money orders payable to: ASHLAND.
We also accept Visa, MasterCard and American Express
C. ASHLAND offers a full seven (7) day return privilege on items improperly described.
D. Orders can be held for 45 days with a 20% non-refundable deposit.
E. Office Hours are 9 a.m. to 5 p.m., Monday through Friday.

Send all checks to: ASHLAND, Suite 200, 640 South Washington Blvd., Sarasota, FL 34236-7137; All Foreign orders should be paid by Bank Wire Transfer; Northern Trust Bank of Florida; ABA #066009650; Checking Account Number 718936; Credit to ASHLAND INVESTMENT

ASHLAND GRADING SYSTEM GUIDE

The lots described in this catalog have been carefully examined and valued by Ashland's experts and watch makers, taking into consideration the aesthetic, historical and technical interest, age and rarity, as well as the technology available at the time of production of each timepiece.

For such judgment to be as objective as possible, it must rest on a number of criteria, particularly with regards to the age of a lot. Indeed, a wrist watch of less than 50 years old cannot be judged with the same criteria as a Renaissance watch. This is the reason why some of the gradings will only qualify for certain types of watches and will never be used for others.

For example, if, as a general rule, watches can be attributed gradings from 1 to 4 for the case, the dial and the movement, watches of less than 100 years old can be given grading 1 (as new), 3 (in very good condition), or 4 (in good condition). The latter, (grading 4), will be followed by one or more grading numbers to justify why the lot cannot be considered "in very good condition". On the other hand, watches over 100 years old, of similar condition, would indeed be considered as "very good" because of their age and would therefore qualify for grading 3. Needless to say, watches over 100 years old, even the best state of conservation for their age, are unlikely to ever be considered "as new" and would therefore never be eligible for grading 1; for this reason, we have introduced grading 2 (in perfect condition).

At the end of each lot description, before the description, you will find a condition report box, with letters and numbers, divided into 4 sections: these are the grades given to the lot with reference to the condition of its case, its dial and hands, its movement, and its rarity level-if applicable.

To understand the grades shown in the condition report box, consult the Grading System as follows:

C for the case, followed by one or more numbers = condition of case.

D for the dial (& hands), followed by one or more numbers = condition of dial & hands.

M for the movement, followed by one or more numbers = condition of movement.

Next to this condition report box, is an experts rarity box featuring one number from 1-10 as an overall rarity grade.

See example below:

C 1	D 1-01	M 1	R 4
------------	---------------	------------	------------

Case: as new **Dial:** as new - original hands **Movement:** as new **Rarity Grade**

**Shipping Charges
are on a Piece
by Piece basis**

GUIDE TO GRADING

1 : as new	2 : in perfect condition	3 : very good	4 : good	5 : fair
------------	--------------------------	---------------	----------	----------

C CASE	ENAMEL AND VARIOUS TYPES OF DECORATION	D DIAL (cont.)	HANDS	RARITY GRADE
DETAILS				
6 patinated	54 very worn	25 partly rubbed	01 original	A select group of watches in this catalog have been assigned a "rarity grade" which will appear in the description heading. The total production number of U. S. made pocket watches and vintage wrist watches are fairly well known and accessible, unlike the large and more varied output of European makers and of early horological examples. Therefore, this simplified 1 thru 10 numerical grade is designed to assist collectors and investors in determining the scarcity of a given timepiece in today's market (#1 is considered common to #10, which is an extremely rare item). The following factors are the basis of assigned rarity levels: (c) Historical importance. (d) Condition in relationship to other examples of similar type. (e) Artistic case design, i.e. enamel, unusual shape or form pieces. (f) Low survival rate of similar types. (g) Investment potential for increase in demand and price. A rarity grade will be assigned to highlight items which offer strong investment potential (generally items of level 5 thru 10).
7 slightly oxidized	55 very slightly chipped	26 very well reprinted by the manufacturer	02 replaced by the manufacturer	
8 oxidized	56 chipped	27 partially reprinted	03 later original	
9 slightly scratched	57 damaged	28 very well reprinted	04 partially replaced	
10 scratched	58 very damaged	29 well reprinted	05 period	
11 deeply scratched	59 slight restoration (hard enamel)	30 reprinted	06 later	
12 a dent	60 restored (hard enamel)	31 luminous reprinted	07 repaired	
13 2 dents	61 slight restoration (soft enamel)	32 alterations	08 damaged	
14 multiple dents	62 restored (soft enamel)	33 period, original	09 new luminous	
15 slightly worn	63 period original	34 later original		
16 worn	64 later original	35 period		
17 very worn	65 period	36 later		
18 repolished edges preserved	66 later	37 custom-made		
19 repolished edges altered	67 custom-made	38 to be restored		
20 back threading damaged	68 to be restored			
21 period original	69 pearl missing	ENAMEL DIAL DETAILS		
22 later original	70 pearls missing	39 slightly oxidized		
23 period	71 paste stone missing	40 slightly scratched		
24 later	72 paste stones missing	41 scratched		
25 custom-made	73 precious stone missing	42 deeply scratched		
26 replacements	74 precious stones missing	43 hairline		
27 lacking elements	75 outer over glaze	44 two hairlines		
28 transformations		45 multiple hairlines		
29 alterations	D DIAL	46 chips(s) or hairline(s) under bezel, not visible when closed		
30 damaged	METALLIC DIAL DETAILS	47 hairline, subsidiary dial		
31 very damaged	6 patinated	48 hairlines, subsidiary dial		
32 restored by the manufacturer	7 slightly oxidized	49 chipped subsidiary dial		
33 slightly restored	8 oxidized	50 hairline(s) barely visible		
34 restorations	9 slightly scratched	51 slightly worn		
35 worn pushpiece	10 scratched	52 worn		
36 worn pushpieces	11 deeply scratched	53 very slightly chipped		
37 replaced pushpieces	12 a dent	54 chipped, winding aperture		
38 later original crown	13 2 dents	55 chipped		
39 period crown	14 multiple dents	56 damaged		
40 to be restored	15 spotted	57 slightly restored		
41 partially re-gilt	16 slightly worn	58 restored by the manufacturer		
42 re-gilt	17 worn	59 restorations		
43 bow replaced	18 very worn	60 soft overglazed		
44 hinge worn	19 damaged	61 partly rubbed		
45 hinge restored	20 refreshed	62 alterations		
46 renumbered	21 soft over glazed	63 period, original		
47 hairline	22 slightly restored	64 later original		
48 2 hairlines	23 restored by the manufacturer	65 period		
49 multiple hairlines	24 restorations	66 later		
50 slightly scratched		67 custom-made		
51 scratched		68 to be restored		
52 slightly worn				
53 worn				



#1. Miniature Copper Color Handle Controlled Alarm With Porcelain Dial

Swiss; Circa Date: 1925

CASE: Measures 2" high, 2" wide and 1-3/4" thick. Miniature, open face, copper on brass and plain.

DIAL: White, porcelain, Arabic numerals, spade hands.

MOVT: Stem-set, lever escapement, gilt, full plate, signed.

C 3	D 3	M 3	R 7
-----	-----	-----	-----

Experts Opinion: Much sought after handle-controlled alarm. Handle up alarm, handle down to stop. Quite ingenious!

Price: \$250.00

#2. Miniature Black Porcelain Dial Alarm Table Clock

Swiss; Circa Date: 1928

CASE: Measures 2" high, 2" wide and 1-3/4" thick. Miniature, open face, black on brass and plain.

DIAL: White, porcelain, Arabic numerals, spade hands.

MOVT: Stem-set, lever escapement, gilt, full plate, unsigned.

C 2	D 2	M 2	R 6
-----	-----	-----	-----

Experts Opinion: Wow – what an untouched condition to find this miniature gem. Really cool!

Price: \$200.00

#3. Very Mint & Rare Early Travel Alarm In Gun Metal With Original Box

Swiss; Circa Date: 1930

CASE: Measures 2" high, 2" wide and 1-1/2" thick. Miniature, open face, gun metal and plain.

DIAL: White, porcelain, Arabic numerals, spade/baton hands.

MOVT: Stem-set, lever escapement, gilt, full plate.

C 2-15	D 2	M 2	R 7
--------	-----	-----	-----

Experts Opinion: Amazing that this mini clock would remain in this condition over the years, rare with porcelain dial. A real jewel for the collection!

Price: \$425.00

#4. Set Of Three Cyma Mini Alarm Table Clocks

Cyma; Circa Date: 1940

CASE: Measures 2-1/2" high, 2-1/2" wide and 3/4" thick. Miniature, open face, yellow, brass and plain.

DIAL: Off-white/gold, metal, Arabic/Roman numerals, baton hands, signed "Cyma Amic."

MOVT: 10 Jewel, stem-set, lever escapement, gilt, full plate, signed.

C 3-6	D 3	M 3	R 5
-------	-----	-----	-----

Experts Opinion: All three work fine, a great series of gifts. High quality alarms at a fair price!

Price: \$250.00 (all three)

#5. Neat Old Alarm Clock Miniature (Scarce)

Swiss; Circa Date: 1920

CASE: Measures 4" high, 2-1/4" wide and 1-1/2" thick.

DIAL: Fancy, metal, Arabic numerals, spade hands.

MOVT: Stem-set, lever escapement, gilt, full plate.

C 3-7	D 3	M 3	R 6
-------	-----	-----	-----

Experts Opinion: Loud and aggressive bell on this one – a true collectable, seldom seen!

Price: \$150.00

#6. A Pair Of Cyma Retro Brass Alarms

Cyma; Circa Date: 1930

CASE: Measures 2-3/4" high, 2-3/4" wide and 1" thick.

Miniature, open face, brass, plain.

DIAL: Red and brown, metal, Arabic numerals, baton hands, signed "Cyma."

MOVT: Stem-set, lever escapement, gilt, full plate, signed.

C 3	D 3	M 3	R 5
-----	-----	-----	-----

Experts Opinion: Both clocks are in excellent condition. One has a red dial and the other a light-brown dial. Some variation in hands, other than that, they are the same!

Price: \$325.00 (Pair)

#7. Sterling Easel Style Miniature Table Clock

Ingersol (U. S.); Circa Date: 1940

CASE: Measures 3-1/2" high, 2-1/2" wide and 1" thick.

Miniature, open face, sterling silver, floral/geometric decorations, signed "Sterling."

DIAL: Off-white, paper, Arabic numerals, spade hands, signed "Eileen."

MOVT: Stem-set, lever escapement, gilt, full plate, signed.

C 3-13	D 3	M 3	R 5
--------	-----	-----	-----

Experts Opinion: Actually very scarce to find this early dollar watch in this type of care. A true collectors item! (We can remove the dents if you wish).

Price: \$200.00

#8. Really Neat Fahrenheit Temperature Gauge On Swiveled Brass Rococo Stand

Swiss; Circa Date: 1920

CASE: Measures 4" high, 3" wide and 1/4" thick.

Miniature, open face, gilt/brass, floral and gargoyle decoration!

DIAL: Off-white, metal, Arabic numerals, baton hands, signed "Fahrenheit."

C 3-6	D 3	M 3	R 6
-------	-----	-----	-----

Experts Opinion: Another scarce find – very clean and working correctly. You will not see another one!

Price: \$275.00

#9. Interesting German Precision Measuring Tool (Gauge) With Original Box & Papers (mounted in box for protection)

JKA Feintaster (Germany); Circa Date: 1910

CASE: Measures 5-1/2" long, 2-1/2" wide and 1-1/2" high.

DIAL: White, metal, Arabic numerals, baton hands, signed "JKA – Feintaster."

C 3	D 3	M 3	R 7
-----	-----	-----	-----

Experts Opinion: JKA Feintaster is the name of this amazingly accurate device. Very well constructed and will measure thickness of fine paper to any metal sheet to the nearest 1/100 of a mm – now that's thin! The Germans have always been known for their precision instruments!

Price: \$300.00

#10. Mini 8-Day Alarm Clock With Original Box

T. Anthony (Swiss); Serial # 446208; Circa Date: 1960

CASE: Measures 1-3/4" high, 1-3/4" wide and 1/2" thick.

Miniature, open face, brass, plain.

DIAL: Off white, metal, Arabic numerals, baton hands, signed, "T. Anthony, Alarm, 8-Day."

MOVT: Stem-set, No. 446208, lever escapement, gilt, full plate, unsigned.

C 3	D 3	M 3	R 5
-----	-----	-----	-----

Experts Opinion: Cute, small and quite nice. Original box leans toward a great travel gift!

Price: \$150.00

#11. Originally Boxed Brass & Enamel Wig Wag (Mock Pendulum) Miniature Table Clock

Swiss (Brevet); Serial # 93017; Circa Date: 1920

CASE: Measures 2-1/2" high, 1-1/2" wide and 1/2" thick.

Miniature, open face, brass, enamel.

DIAL: Silver, metal, Arabic numerals, Mercedes style hands.

MOVT: 15 Jewel, stem-set, No. 93017, lever escapement, gilt, 3/4-plate.

C 3	D 3-6	M 3	R 7
-----	-------	-----	-----

Experts Opinion: Quite a find, this miniature is in wonderful condition and works great. The box is original and in excellent shape!

Price: \$600.00

#12. Lovely German Sterling Rococo Miniature Easel Table Clock Alarm By Cyma

Cyma; Circa Date: 1945

CASE: Measures 5-1/2" high, 3-3/4" wide, 1" thick.

Miniature, open face, sterling silver, floral/repousse decorations!

DIAL: Silver color, silver type, Roman numerals, spade hands, signed "Gorham, Cyma."

MOVT: 10 Jewel, stem-set, lever escapement, nickel, full plate, signed.

C 3	D 3	M 3	R 7
-----	-----	-----	-----

Experts Opinion: A very attractive clock, alarm made by a very reliable firm (Cyma)!

Price: \$500.00



ASHLAND

#13. Exceptional Juvenia Agate, Mother-of-Pearl & Brass Table Clock Miniature

Juvenia (Didisheim & Co.) Swiss; Circa Date: 1930

CASE: Measures 3" high, 2-1/2" wide, 1" thick. Miniature, open face, brass, agate, mother-of-pearl, floral/geometric decorations, signed "Le Numero F. De Juvenia."

DIAL: Fancy, mother-of-pearl, Arabic numerals, fully etched design, Breguet hands.

MOVT: 17 Jewel, stem-set, lever escapement, nickel, 3/4-plate, signed.

C 3-56	D 3	M 3	R 8
--------	-----	-----	-----

Experts Opinion: Appears to be a bottle, top wind with an amazing dial of the best quality (hand etched). One small chip keeps this beauty from perfection!

Price: \$575.00

#14. Scarce Mickey Mouse Mechanical Alarm Clock

Bradley (W. Germany); Circa Date: Early 1950's

CASE: Measures 3-1/4" high, 3-1/4" wide and 1" thick. Open face, red plastic, plain, signed "West Germany."

DIAL: Off-white, metal, Arabic/Mickey hands, signed "Bradley."

MOVT: Stem-set, lever escapement, gilt, full plate, unsigned.

C 3	D 3	M 3	R 6
-----	-----	-----	-----

Experts Opinion: Mickey Mouse is one of the most collected characters in the world! This can only increase in value. This one is from the early 1950's - scarce!

Price: \$325.00

#15. Swiza Alarm Travel Clock

Swiza; Circa Date: 1960

CASE: Measures 3-1/2" high and 4-1/4" wide, hunter case, leatherette and plain.

DIAL: Silver, metal, Roman numerals, spade hands, signed "Swiza 8."

MOVT: Stem-set, lever escapement, gilt, full plate, signed.

C 3	D 2	M 2	R 4
-----	-----	-----	-----

Experts Opinion: What a bargain!

Price: \$75.00

#16. Miniature Sterling Juvenia Traveler Purse Watch

Juvenia; Serial # 67488; Circa Date: 1930

CASE: No. 67488, miniature, hunter case, sterling silver, geometric decorations.

DIAL: White, porcelain, Arabic numerals, Mercedes style hands.

MOVT: 15 Jewel, stem-set, No. 84650, lever escapement, nickel, 3/4-plate, signed.

C 3	D 3	M 3	R 6
-----	-----	-----	-----

Experts Opinion: Deeply ribbed case and a heavy construction make this quite desirable!

Price: \$325.00

#17. Sterling Silver Swiss 8-Day Travel Clock

Octava (Swiss); Serial # 5282; Circa Date: 1940

CASE: Measures 3" wide, 3-1/2" high and 1/2" thick, hunter case, sterling silver, geometric decorations.

DIAL: White, porcelain/single sunk, Arabic numerals, spade hands, signed "8-Day Swiss."

MOVT: 15 Jewel, stem-set, No. 5282, lever escapement, nickel, 3/4-plate, signed.

C 3	D 3	M 3	R 6
-----	-----	-----	-----

Experts Opinion: Heavy silver carry watch and case - all original and in wonderful condition!

Price: \$300.00

#18. Oversized Display Clock/Watch

Mohertus/Austria; Circa Date: 1950

CASE: Diameter 3-1/2", oversized, open face, stainless, plain.

DIAL: Off-white, metal, Arabic numerals, baton hands, signed "V I P."

MOVT: 1 Jewel, stem-set, lever escapement, gilt, 3/4-plate, signed.

C 3	D 3	M 3	R 5
-----	-----	-----	-----

Experts Opinion: Big watch - little money!

Price: \$150.00

#19. 8-Day Travel Clock In Leatherette Case

Swiss; Circa Date: 1940s

CASE: Measures 4" in width and 4" long, open face, leatherette.

DIAL: Gold, metal, Arabic numerals, Mercedes style hands.

MOVT: Stem-set, lever escapement, nickel, 3/4 plate, signed.

C 3-16	D 3-7	M 3	R 4
--------	-------	-----	-----

Experts Opinion: 8-Day travel clock at a fair price!

Price: \$125.00

#20. Unique Oversized Bailey Banks & Biddle Horseshoe Shaped Alarm Watch

Bailey Banks & Biddle; Man's; Serial #124385; Circa: 1905

CASE: Measures 5" high with bow, 3" wide and 3/4" thick. Oversized, open face, nickel, silver plated nickel, geometric decorations, and horseshoe shape.

DIAL: White, porcelain/single sunk, Roman numerals, spade hands, signed "B. B. & B."

MOVT: Stem-set, No. 124385, lever escapement, gilt, full plate, signed.

C 3	D 3	M 3	R 7
-----	-----	-----	-----

Experts Opinion: Back hinges open for an easel effect. The 22-size stand alone becomes a travel alarm, silver plated nickel. Quite a find!

Price: \$800.00

#21. Musical Clock By Petite Neuchteloise

Neuchteloise (Swiss); Circa Date: 1950

CASE: Measures 5" high, 3-1/4" wide and 1-3/4" thick. Open face, yellow, brass, plain.

DIAL: Gold, metal, Roman numerals, filigree hands, signed "Petite Neuchteloise."

MOVT: Stem-set, lever escapement, gilt, full plate, signed.

C 3	D 3	M 3	R 6
-----	-----	-----	-----

Experts Opinion: Great sound resonates from this clock, the tune is a Swiss waltz. Music plays at any time you set the clock to.

Price: \$500.00



#22. Scarce Le Coultre In Line Escapement Retro Clock

Le Coultre (Swiss); Circa Date: 1960

CASE: Measures 6" high, 6-1/4" wide and 1-3/4" deep.

Open face, brass/plastic, and plain, 60's look!

DIAL: Skeleton, gold, markers, baton hands.

MOVT: Stem-set, lever escapement, gilt, straight line, unsigned.

C 2	D 2	M 2	R 7
-----	-----	-----	-----

Experts Opinion: You can see why the Le Coultre clock series is so desirable. They are really super neat – this is no exception!

Price: \$625.00

#23. "The Light House" Exceptional Copper Lighthouse With 8-Day Clock, Hygrometer, Barometer, Thermometer & Compass

Swiss; Circa Date: 1925

CASE: Measures 8" high, 2-1/2" wide and 2-1/2" thick.

Open face, copper & brass, machined/geometric decorations, lighthouse form clock.

DIAL: Off-white, metal, Arabic numerals, baton hands, signed 8-Day.

MOVT: Stem-set, lever escapement, lever escapement, gilt, full plate.

C 3-7	D 3	M 3	R 7
-------	-----	-----	-----

Experts Opinion: Push at 8:00 and the clock door opens for winding, all meters work. A great conversation piece - very rare!

Price: \$1,225.00

#24. Collectible Le Coultre 8-Day Desk Alarm Clock

Le Coultre; Circa Date: 1960

CASE: Measures 2" high, 2" wide and 2" thick. Miniature, open face, brass & enamel, plain.

DIAL: Off-white, metal, Arabic numerals, baton hands.

MOVT: Stem-set, lever escapement, nickel, 3/4-plate, signed.

C 3	D 3	M 3	R 7
-----	-----	-----	-----

Experts Opinion: A late Retro style case houses this very desirable movement. Le Coultre alarms were some of the finest!

Price: \$375.00

#25. Sexy Art Deco Table Lighter & Clock By Ronson

New Haven Clock Co. (Conn.); Circa Date: 1930

CASE: Measures 4" high, 2-3/4" wide and 1-3/4" thick.

Open face, chrome & painted, geometric decorations, Deco.

DIAL: Off-white, fancy, metal, Arabic numerals, spade hands, signed "Ronson."

MOVT: Stem-set, lever escapement, gilt, 3/4-plate, signed.

C 3-15	D 3	M 3	R 7
--------	-----	-----	-----

Experts Opinion: We can always spot a true future investment piece - this is one! Wild Deco designed touch tip lighter with clock. A no-brainer!

Price: \$775.00

#26. Tiffany & Co. 8-Day Travel Clock In Later Wood Case & Stand

Tiffany (Swiss); Serial # 3866913; Circa Date: 1928

CASE: Measures 4-1/4" high, 3-1/2" wide and 1/2" thick.

DIAL: Gold, metal, Arabic numerals, Mercedes style hands.

MOVT: Stem-set, No. 3866913, lever escapement, nickel, 3/4-plate, signed.

C 3	D 3	M 3	R 6
-----	-----	-----	-----

Experts Opinion: Well made wooden case to allow this top of the line travel watch to stand up for itself. Tiffany only sold the best!

Price: \$400.00

#27. Psychedelic Ernest Borel Cocktail Desk Clock

E. Borel (Swiss); Serial # 508; Circa Date: 1965

CASE: Measures 4-1/2" high, 3-3/4" in diameter and 1" thick. Open face, brass, yellow and plain.

DIAL: Off-white, fancy, rotating disc minute hand, metal, Arabic numerals, baton hands, signed "E. Borel."

MOVT: Stem-set, No. 508, lever escapement, gilt, full plate, signed.

C 3-6	D 3	M 3	R 5
-------	-----	-----	-----

Experts Opinion: The center disc rotates as the minute hand moves. Another one of Borel's fun clocks!

Price: \$150.00

#28. U. S. Made Rotating Dial Desk Clock

United States; Circa Date: 1940

CASE: Measures 2-1/4" high and 5" in diameter. Open face and black painted brass.

DIAL: Off-white, rotating dial, metal, Arabic numerals, pointer hands.

MOVT: Keyset, lever escapement, gilt, 3/4-plate, unsigned.

C 3-16	D 3-8	M 3	R 6
--------	-------	-----	-----

Experts Opinion: Very few of these cool clocks survived, they are fairly fragile and were easily damaged. A scarce collectors item that runs fine!

Price: \$200.00

#29. Solid Brass Chelsea Table Clock

Chelsea (Wm. Wise & Son); Serial # 132934; Circa: 1920

CASE: Measures 5" high, 4" wide and 2-1/4" thick. Open face, brass, yellow and plain.

DIAL: Silver, metal, Arabic numerals, spade hands, signed "Wm. Wise & Son, Chelsea."

MOVT: Stem-set, No. 132934, lever escapement, gilt, full plate, signed.

C 3	D 3	M 3	R 7
-----	-----	-----	-----

Experts Opinion: Screw off back allows you to wind and set this early version of a collector's desk clock. Quality one!

Price: \$775.00



#30. Chelsea Ships Bell Auto Strike Wall Mount Clock & Key

Chelsea Clock; Serial # 643766; Circa Date: 1940s

CASE: Measures 4-3/4" in diameter and 3-1/2" deep. Open face and chromed.

DIAL: Silver, metal, Arabic numerals, spade hands, signed "Chelsea Ships Bell."

MOVT: Keyset, No. 643766, lever escapement, gilt, full plate.

C 3	D 2	M 3	R 6
-----	-----	-----	-----

Experts Opinion: Another clock ready to go – wind it and walk away!

Price: \$675.00

#31. Chelsea Boston Ship Auto Strike Wall Mount Brass Clock & Key

Chelsea Clock; Serial # 12874; Circa Date: 1950

CASE: Measures 5-1/2" in diameter and 3-1/2" deep. Oversized, open face, polished brass.

DIAL: Silver, metal, Arabic numerals, spade hands, signed "Boston, Ship Strike."

MOVT: Keyset, No. 12874, lever escapement, gilt, full plate.

C 2	D 2	M 2	R 6
-----	-----	-----	-----

Experts Opinion: Superb condition, ready to be mounted and she'll run like a top!

Price: \$725.00

#32. Salem 8-Day Ships Bell Clock In Form Of A Ships Wheel & Key

Salem/Swiss; Circa Date: 1920

CASE: Measures 7-1/2" high, 7-1/2" wide and 2-1/2" thick. Open face, stainless, white/chromed, plain with ship wheel.

DIAL: Black, metal, Arabic numerals, Breguet hands.

MOVT: Keyset, lever escapement, gilt, full plate.

C 2-6	D 2	M 2	R 5
-------	-----	-----	-----

Experts Opinion: Great clock, you sea lovers should really jump on this sweet timepiece!

Price: \$500.00

#33. 56-Hour Swiss Made Fusee (Chain Driven) 20 Jewel Spring Detent Ships Chronometer, Helical Hairspring & Up/Down Indicator Russian Navy Deck Watch With Gimballed Boxes & Key

Poljot (Swiss); Serial # 17733; Circa Date: 1980

CASE: Oversized, open face, plain.

DIAL: Silver, metal, Arabic numerals, spade hands.

MOVT: Keyset, No. 17733, chronometer, gilt, full plate, signed.

C 2	D 2	M 2	R 6
-----	-----	-----	-----

Experts Opinion: Double mahogany boxed Gimballed chronometers are really something to own. This gold plated movement is of the highest quality. Up/down indicator and detent escapement means great accuracy!

Price: \$1,775.00



#33

#33
With
Outer
Box

#34. Swiza Alarm Table Clock With Time

Swiza (Swiss); Circa Date: 1985

CASE: Measures 3-1/2" high, 2-1/2" wide and 1" thick. Miniature, open face, gilt, yellow, plain.

DIAL: Off-white, metal, Roman numerals, spade hands, signed "Swiza 8."

MOVT: Keyset, lever escapement, gilt, full plate, signed.

C 2	D 2	M 2	R 4
-----	-----	-----	-----

Experts Opinion: Newer but decent quality alarm table clock!

Price: \$125.00

#35. Waterbury Miniature Carriage Clock

Waterbury (Conn.); Circa Date: 1910

CASE: Measures 2-1/4" high, 1-3/4" wide and 1" thick. Miniature, open face, brass & bezeled glass, plain.

DIAL: White, porcelain, Arabic numerals, spade hands, signed "Waterbury."

MOVT: Keyset, lever escapement, gilt, full plate, signed.

C 3	D 3	M 3	R 5
-----	-----	-----	-----

Experts Opinion: Overall pretty clean, a couple of hidden chips on the glass keep this clock from perfection!

Price: \$300.00

#36. Another Original Cylinder Platform French Carriage Clock & Key

French; Circa Date: 1890

CASE: Measures 4-1/4" high, 2-3/4" wide and 2-1/4" thick. Open face, brass & bezeled glass, plain.

DIAL: White, porcelain, Roman numerals, spade hands.

MOVT: Keyset, cylinder escapement, gilt, full plate, unsigned.

C 3-7	D 3	M 3-7	R 5
-------	-----	-------	-----

Experts Opinion: Another original carriage clock but his one is a scarcer cylinder escapement!

Price: \$475.00

#37. Simple But Near Mint Vintage Carriage Clock & Key

French D. H.; Circa Date: 1890

CASE: Measures 4-1/4" high, 2-3/4" wide and 2-1/4" deep. Open face, brass and bezeled glass, plain.

DIAL: Off-white, porcelain, Arabic numerals, spade hands.

MOVT: Keyset, lever escapement, gilt, full plate, signed "D. H."

C 3-7	D 3	M 3-7	R 6
-------	-----	-------	-----

Experts Opinion: Very clean and original condition. Runs fine for such an early piece!

Price: \$475.00

#38. Mid Size 1-Hour Repeater & Alarm French Carriage Clock With Key

L. Epee, St. Suzanne, France; Circa Date: 1940

CASE: Measures 5" high, 3-1/2" wide and 2-3/4" deep. Oversized, open face, yellow, brass & bezeled glass, plain, signed "France."

DIAL: White, porcelain, Roman numerals, Breguet hands, signed "L. Epee, France."

MOVT: Keyset, lever escapement, gilt, full plate, unsigned.

C 3-7	D 3	M 3	R 6
-------	-----	-----	-----

Experts Opinion: This is a nice working clock for the executive's desk. Clean and sunny!

Price: \$1,225.00



#39. Tiffany & Co. Paris Grand & Petite Sonnerie French Carriage Clock & Alarm

Tiffany & Co. (Paris, France); Circa Date: 1890

CASE: Measures 4" high, 2-1/2" wide and 2-1/4" thick. Open face, plain with brass and beveled glass, plain.

DIAL: White, porcelain, Roman numerals, spade hands, signed "Tiffany & Co., Paris."

MOVT: Keyset, No. 8222, lever escapement, gilt, full plate, unsigned.

C 3-7	D 3-51	M 3-6	R 7
-------	--------	-------	-----

Experts Opinion: 1/4-Hour repeater with Sonnerie lever on the bottom. Light "Tiffany & Co., Paris" signature on dial. Quite a rare clock and very heavily sought after!

Price: \$3,000.00

#40. Rare 1/4-Hour Repeating Strutt Clock With Key In Unusual Oval Watch Form With Key

Swiss (Strutt); Circa Date: 1865

CASE: Measures 5" high, 3" wide and 1/2" thick. Miniature, open face, gilt, yellow, plain.

DIAL: White, porcelain, Roman numerals, spade/Breguet hands.

MOVT: Keyset, lever escapement, gilt, bridge style, unsigned.

C 3	D 3	M 3	R 8
-----	-----	-----	-----

Experts Opinion: I've seen many Strutt clocks but this is very unusual. Being a high quality Circa 1860's movement and trying to appear as a watch. Very interesting and quite rare!

Price: \$1,600.00

#41. Fancy Brass Cherub Cutaway New Haven Desk Clock

New Haven (Conn.); Circa Date: 1920

CASE: Measures 5-1/2" high, 5" wide and 1-1/2" thick. Miniature, open face, gilt, pot metal with floral decorations & Cherubs.

DIAL: White, porcelain, Arabic numerals, spade hands, signed "New Haven."

MOVT: 7 Jewel, stem-set, lever escapement, gilt, full plate, signed.

C 3	D 3	M 3	R 5
-----	-----	-----	-----

Experts Opinion: A nice decorative clock for the China cabinet or desk!

Price: \$375.00

#42. Exciting & Rarely Seen Industrial Series Miniature Table Clock By Gubelin, Figural Industrial Series

E. Gubelin (Geneva, Switzerland); Serial #1093570; C. 1920

CASE: Measures 5-1/2" high, 3" wide and 3" thick. Miniature, open face, gilt, yellow/white, figural machine or furnace of some sort.

DIAL: White, fancy, porcelain, Arabic numerals, baton hands.

MOVT: 17 Jewel, stem-set, No. 1093570, 3 adjustments, lever escapement, nickel, bridge style, signed.

C 2	D 2	M 2	R 8
-----	-----	-----	-----

Experts Opinion: Unique in every way, we have no idea what this represents but the quality and craftsmanship is second to none. Special order from Gubelin (one of Geneva's finest jewelry stores)! If anyone knows what this figure is, we can use the help. Case is extremely heavy!

Price: \$2,300.00

#43. Scarce & Interesting World War II 8-Day Civil/Date U. S. Military 24-Hour Aircraft Cock Pit Clock

Waltham (Mass.); Circa Date: 1942

CASE: Measures 3-1/4" high, 3-1/4" wide and 1-1/2" deep. Open face, hard plastic, and plain.

DIAL: Black, metal, Arabic numerals, spade hands, 8 days.

MOVT: 17 Jewel, stem-set, lever escapement, gilt, full plate, signed.

C 3	D 3	M 3	R 6
-----	-----	-----	-----

Experts Opinion: Scarce prize for the Military buff! We just don't see these anymore - 8-day, civil time, 24-hour cockpit clock.

Price: \$475.00

#44. Mark I - Boat Clock "U. S. Navy" World War II With Key

Seth Thomas, Connecticut; Serial # 14611; Circa: 1942

CASE: Measures 5" high, 4-1/2" wide and 3" deep.

Oversized, open face, pot metal and aluminum, plain.

DIAL: Black, metal, Arabic numerals, spade hands, signed "Mark I - Boat Clock U. S. Navy."

MOVT: 17 Jewel, keyset, No. 14611, lever escapement, gilt, full plate, signed.

C 3	D 3	M 3	R 5
-----	-----	-----	-----

Experts Opinion: Good piece for the Military collector. Missing back hinged mount but priced accordingly!

Price: \$225.00

#45. Plastic Ball Desk Clock (Swiss)

Swiss (Cortland); Serial # 35; Circa Date: 1995

CASE: Measures 3" high, 3" wide and 3" deep. Open face, brass and plastic.

DIAL: Gold, metal, Roman numerals, poker hands, signed "Cartier" (has nothing to do with actual Cartier).

MOVT: 15 Jewel, stem-set, No. 244B7195, lever escapement, gilt, 3/4-plate, signed "Cortland."

C 2	D 2	M 2	R 4
-----	-----	-----	-----

Experts Opinion: Good looking at a low price!

Price: \$275.00



#40

#41

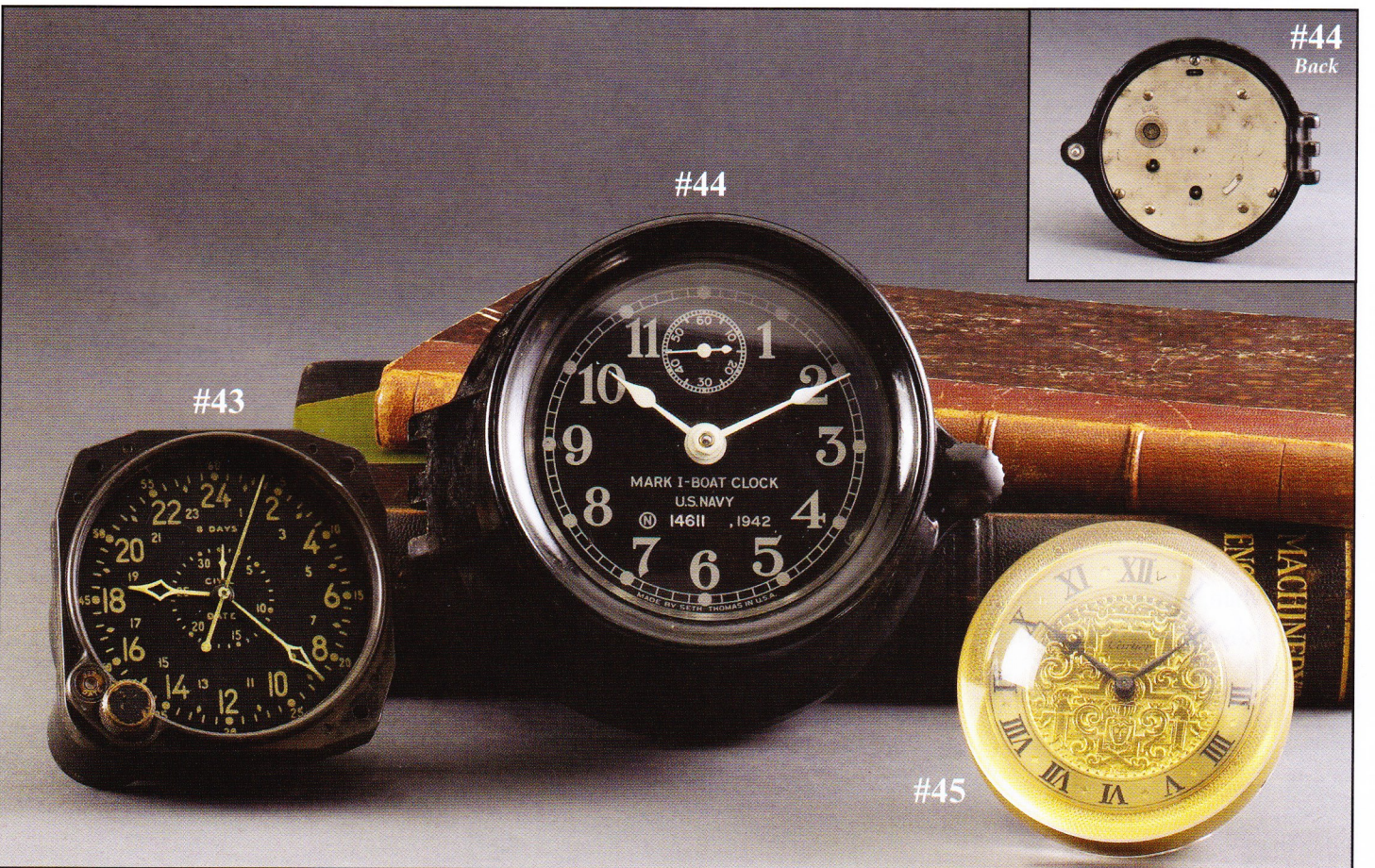
#42

#39
With Key

#42
Back

#42
Movt.

#39
Movt.



#43

#44

#44
Back

#45

#46. Lovely Swiss Quartz New/Old Stock Moonphase Calendar Table Clock In Original Box With Certificate

Jean Roulet (Swiss); Serial # 2764; Circa Date: 1995

CASE: Measures 6" high, 8" wide and 1-1/4" thick.

Oversized, open face, gilt, yellow, plain, signed "Swiss."

DIAL: Off-white, metal, Roman numerals, filigree hands, signed "Jean Roulet."

MOVT: Quartz, No. 2764, signed.

C 2	D 2	M 2	R 5
-----	-----	-----	-----

Experts Opinion: Extra battery. A great desk clock for the executive or work at home trader. What a beauty!

Price: \$1,300.00

#47. Extremely Rare Dual Plane Lever Escapement, Fusee Powered Gilded Brass Table Clock With Key

Swiss; Circa Date: 1870

CASE: Measures 3" high and 4" in diameter. Open face, plain.

DIAL: White, porcelain, Roman numerals, spade hands.

MOVT: Keyset, lever/fusee/dual escapement, full plate.

C 2	D 2	M 2	R 7
-----	-----	-----	-----

Experts Opinion: Exposed platform and windowed sides allows complete viewing of this one-of-a-kind superb condition collector's table clock. Large beveled glass crystal tops this gem off!

Price: \$1,525.00

#48. Exquisite Rococo Cased Verge Fusee Mini Wall Clock & Key

Jonathan Carley (Thetford, U.K.); Serial #31616; C.1820

CASE: Measures 9-1/2" high, 4-1/2" wide and 2" thick.

Open face, German silver, floral and geometric decorations.

DIAL: White, porcelain, Roman numerals, spade hands.

MOVT: Keyset, verge/fusee escapement, gilt, full plate, signed.

C 3	D 3-40-01	M 3	R 6
-----	-----------	-----	-----

Experts Opinion: Quality carved balance cock shows the master's skill. Housed in an exceptionally carved Rococo German silver case. All in wonderful condition!

Price: \$1,575.00

#49. Amazing Abraham Vacheron – Girod Early Verge Fusee Bronze & Marble Clock With Key

Vacheron–Girod(Geveva,Switzerland);Serial #33774;C.1786

CASE: Measures 7" high, swing-out, bronze and marble, blindfolded child.

DIAL: White, porcelain, Arabic/Roman numerals, filigree hands.

MOVT: Keyset, verge/fusee escapement, gilt, full plate, signed.

C 3	D 3	M 3	R 7
-----	-----	-----	-----

Experts Opinion: Abraham was the original Vacheron & Constantin creator, this exceptional movement is a great combination with the wonderful blind mans bluff clock case (child playing blind mans bluff).

Price: \$2,300.00

#50. Cylinder Platform Louis XIV Design Miniature Table Clock Of Extreme Quality With Key

Swiss/French Border; Serial # 215; Circa Date: 1890

CASE: Measures 14" high, 4-1/2" wide and 3-1/2" thick.

Open face, gilded, ebony.

DIAL: White, porcelain, Arabic/Roman numerals, filigree hands, signed "Depose", bezel studded with rhinestones.

MOVT: Keyset, cylinder escapement, gilt, full plate, unsigned.

C 3	D 3	M 3	R 6
-----	-----	-----	-----

Experts Opinion: A great look for that special cabinet. This will surely increase in value in the future – clean and ready to run! Mercury statue.

Price: \$1,125.00

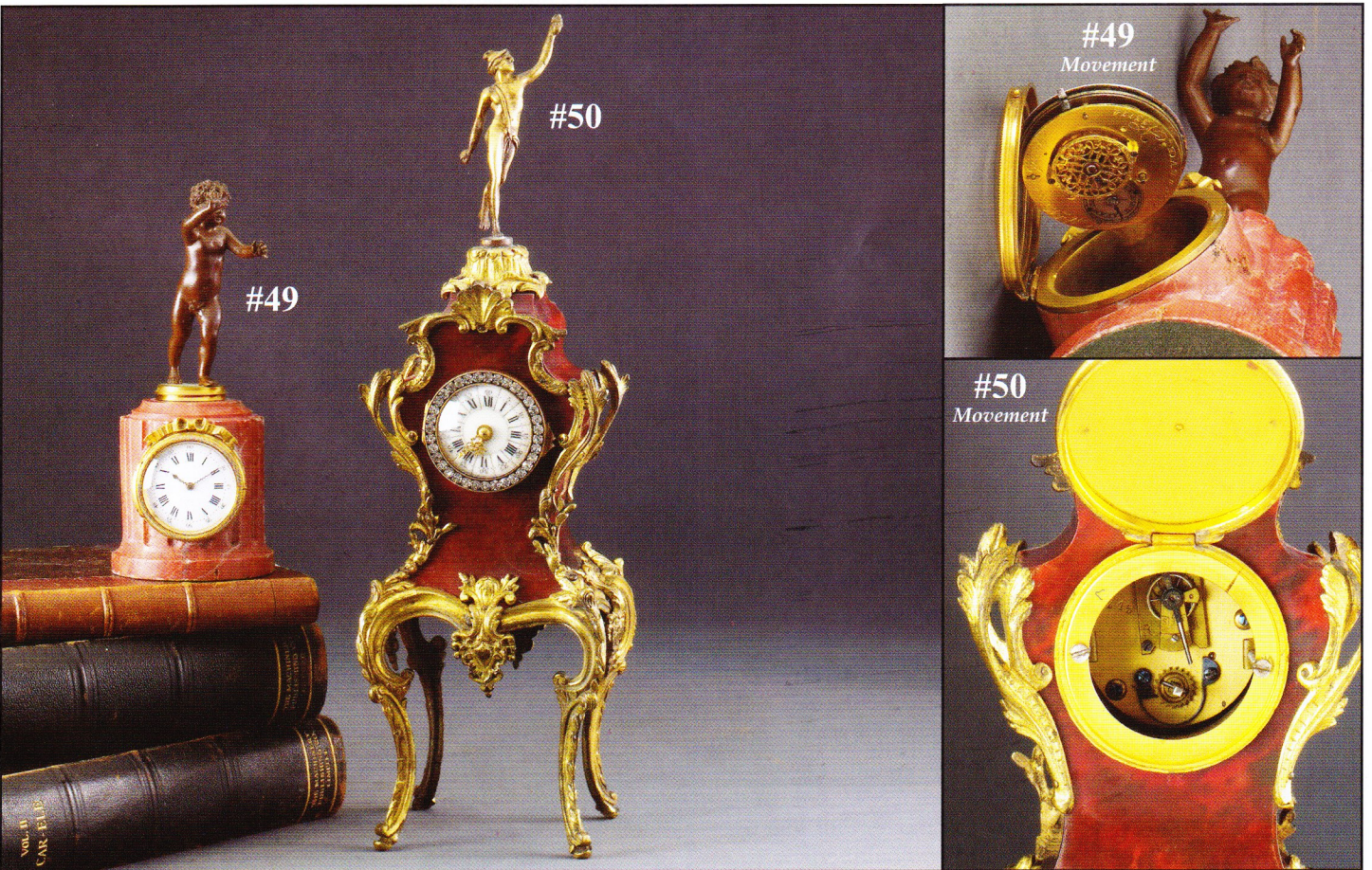


#46
With
Box

#47
Movement

#47

#48
With
Original Key



#49

#50

#49
Movement

#50
Movement

ASHLAND

The Next Few Fusee Grandfather Miniatures Are Some Of The Nicest We Have Ever Seen!

#51. An Excellent Example Of A Silver Embossed & Carved Cherub Case W/A Early Verge Fusee & Fancy Dial Made For The Dutch Market With Matching Key

Neveven (London, U.K.); Serial # 49019; Circa: 1784
CASE: Measures 11-1/2" high, 2-3/4" wide and 1-1/2" thick. Open face, swing-out, sterling silver, floral/geometric/repousse and Cherub decorations, signed "H. H."
DIAL: Fancy, painted castle scene, porcelain, Roman numerals, Breguet hands.

MOVT: Keyset, verge/fusee escapement, gilt, full plate, signed.

C 3	D 3	M 3	R 7
-----	-----	-----	-----

Experts Opinion: Another great movement and matching quality case. These are just splendid timepieces. You will never see these offered again. Includes an exceptional silver embossed key!

Price: \$2,550.00

#52. Amazing Silver Embossed Grandfather Miniature Clock With A Rare Irish Early Verge Movement Of Extreme Quality With Matching Key

G. Fivey (Dublin, Ireland); Serial # 653; Circa Date: 1795
CASE: Measures 9-1/2" high, 4" in width and 1-1/2" thick. Open face, .800 silver, floral/geometric/village/repousse and Cherubs, signed "(A) crown, (H) crown.

DIAL: White, porcelain, Roman numerals, spade hands.

MOVT: Keyset, verge/fusee escapement, gilt, full plate, signed.

C 3	D 3	M 3	R 7
-----	-----	-----	-----

Experts Opinion: Another from the collection. This case is jaw dropping! So much work to make these masterpieces – unparallel!

Price: \$3,300.00

#53. This One Is A Silver Dialed Early Verge Fusee In A Sterling Silver Miniature Grandfather Case, Embossed & Engraved To The Hilt With Key

B. M. (Swiss); Serial # 8696; Circa Date: 1840
CASE: Measures 8-1/2" high, 2-1/4" wide and 1-1/4" thick. Open face, sterling silver, floral/repousse and Cherub decorations.

DIAL: Silver, metal/silver/embossed, Roman numerals, spade hands.

MOVT: Keyset, verge/fusee, gilt, full plate, signed.

C 3	D 3	M 3	R 7
-----	-----	-----	-----

Experts Opinion: Another sweet clock for the real collector. This one has a cutaway scene!

Price: \$2,300.00

#54. The Final Of The Lot - Here We Offer Another Sterling Fully Embossed Miniature Grandfather Clock With A Wonderful Hand Painted Dial On An Extremely Nice British Early Verge Fusee Movement With Key

Stoakes (London, U. K.); Serial # 23649; Circa: 1779
CASE: Measures 9-1/2" high, 3-1/4" wide and 1" thick. Open face, sterling silver, floral/geometric/village/repousse and Cherub decorations.

DIAL: Fancy, painted scenes, porcelain, Roman numerals, filigree hands.

MOVT: Keyset, verge/fusee escapement, gilt, full plate, signed.

C 3	D 3-55	M 3	R 7
-----	--------	-----	-----

Experts Opinion: The final (last but not least). The wonderful case offers another fine British movement and a Dutch painted dial. All in all, a great combination!

Price: \$2,900.00

#55. Very Fine Early Verge Fusee Delicate Floral Designer Table Clock With Key

Noel Baltazard (Paris, France); Circa Date: 1770

CASE: Measures 10" high, 5" wide and 2" thick. Open face, gold plated, floral/geometric decorations.

DIAL: White, porcelain, Roman numerals, filigree hands.

MOVT: Keyset, verge/fusee escapement, gilt, full plate, signed.

C 3	D 3-55	M 3	R 6
-----	--------	-----	-----

Experts Opinion: Very delicate and lovely floral verge fusee table clock. A nice addition to any collection!

Price: \$1,125.00

#56. Scarce Tiny Sterling Silver Grandfather Miniature W/Wrist Watch Movement & Mother-of-Pearl Dial

Astor (Swiss); Circa Date: 1930

CASE: Measures 6" high, 1" wide and 1/2" thick.

Miniature, open face, sterling silver, plain with atlas and globe.

DIAL: Silver/fancy/mother-of-pearl, silver, Arabic numerals, Breguet hands.

MOVT: Stem-set, lever escapement, nickel, 3/4-plate, signed.

C 3	D 3	M 3	R 6
-----	-----	-----	-----

Experts Opinion: A cute and very desirable miniature sterling clock. Atlas and globe on top sets a great display!

Price: \$500.00

#57. Scarce Le Coultre "French Street Lamp" Clock Enamel Over Metal

Le Coultre (Swiss); Circa Date: 1920s

CASE: Measures 11" high, 2" wide and 3/4" thick. Open face, enamel, signed "Le Coultre."

DIAL: Off-white, metal, Roman numerals, filigree hands, signed "Le Coultre."

MOVT: 17 Jewel, stem-set, back-set, No. 457, lever escapement, nickel, 3/4-plate, signed.

C 3	D 3	M 3	R 6
-----	-----	-----	-----

Experts Opinion: These are highly sought after - this one is in quite nice condition!

Price: \$1,300.00



#51
Movt.



#51



#52

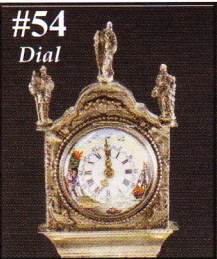
#53



#52
Movt.



#53
Movt.



#54
Dial



#54



#55

#56



#57



#54
Movt.



#55
Movt.

#58. Exciting .800 Fine Silver & Mother-of-Pearl Early Verge Fusee Miniature Clock With Key

Swiss; Circa Date: 1840

CASE: Measures 4-1/2" high, 2" wide and 1-3/4" thick. Miniature, open face, .800 silver, floral/repousse decorations with mother-of-pearl, carved and chased.

DIAL: White, porcelain, Roman numerals, filigree hands.

MOVT: Keyset, verge/fusee escapement, gilt, full plate, unsigned.

C 3	D 3-54	M 3	R 6
-----	--------	-----	-----

Experts Opinion: This is a real beauty, heavily chased and carved on all surfaces, mother-of-pearl covered case. What a dream of a miniature fusee verge clock!!

Price: \$3,000.00

#59. Mind Blowing Hexagon Silver Early Verge Fusee Table Clock W/Matching Key Made For The Dutch Market

C. Uijterveer (Rotterdam, Holland); Serial # 305; Circa: 1710

CASE: Measures 2-1/2" high and 1-3/4" wide. Miniature, hunter case, top open on demand, sterling silver, village decoration with people of stature engraved on all 6 sides.

DIAL: Silver, embossed, silver, Arabic/Roman numerals, poker hands.

MOVT: Keyset, No. 305, verge/fusee escapement, gilt, full plate, signed.

C 3-6	D 3-6	M 3	R 8
-------	-------	-----	-----

Experts Opinion: Special figural key. Extremely decorated movement comes in a beautifully etched and engraved case. Ball feet and crystal bottom and top. A wonderful example! Comes with an exceptional silver key!

Price: \$2,250.00

#60. Silver & Brass 1/4-Hour Detent Chronometer Fusee Table Clock Of Exceptional Quality With Key

Bentley & Beck (London, U.K.); Serial#658; Circa: 1815-1824

CASE: Measures 4" high, 2-3/4" wide and 1-3/4" thick. Open face, sterling silver, plain.

DIAL: White, porcelain, Roman numerals, Breguet hands, signed "Bentley & Beck Royal Exchange."

MOVT: Keyset, chronometer/fusee escapement, gilt, full plate, signed.

C 3-6	D 3-55	M 3	R 7
-------	--------	-----	-----

Experts Opinion: A wonderfully crafted sterling and brass case houses this extraordinary movement. Unscrew side bow to swing-out the movement. Great sounding gongs for hours and 1/4-hours! Sweet! An extremely rare combination with chronometer and repeater together!

Price: \$3,550.00

#61. Very Fine Miniature Mother-of-Pearl Table Clock With Fancy Dial

Brevet (Swiss); Serial # 33817; Circa Date: 1920

CASE: No. 33817, measures 1-3/4" high, 1" wide and 7/8" thick. Miniature, open face, mother-of-pearl, plain and signed "Brevet."

DIAL: Fancy, porcelain, Roman numerals, filigree hands.

MOVT: 17 Jewel, stem-set, No. 33817, lever escapement, nickel, full plate, signed.

C 2	D 2-43	M 2	R 5
-----	--------	-----	-----

Experts Opinion: A real miniature in like new condition. If you're a miniature collector, don't miss this little gem!

Price: \$675.00

#62. A Precious & One Of The Nicest Miniature Early Verge Fusee Enamel & Marchasite Table Clocks With Original Leather Box & Figural Key

Delisle Vaucher (Paris, France); Serial # 1903; Circa: 1777

CASE: Measures 4-1/2" high, 3" wide and 1-1/2" thick.

Miniature, open face, .800 silver, enamel with marchasites.

DIAL: White, porcelain, Arabic/Roman numerals, filigree hands, signed "Vaucher, Paris."

MOVT: Keyset, No. 1903, verge/fusee escapement, gilt, full plate, signed.

C 2	D 2-54	M 2	R 7
-----	--------	-----	-----

Experts Opinion: Exquisite blue enamel trim and pave marchasites make this exceptional clock one of the prettiest in the collection. French all the way! Nopalenonic key is included.

Price: \$3,550.00

#63. Matchless Miniature Lever Platform Clock With Original Box & Key

Swiss; Serial # 18713; Circa Date: 1890

CASE: Measures 2" high, 2-1/2" high with handle, 1-1/2" wide and 1-1/4" thick. Miniature, open face, gilt, yellow, plain.

DIAL: White, fancy, porcelain, Arabic numerals, poker hands.

MOVT: Keyset, lever escapement, gilt, platform, gilt, full plate, unsigned.

C 2	D 2	M 2	R 6
-----	-----	-----	-----

Experts Opinion: I really like mini clocks - very under valued! This is a high-quality, heavy in weight mini in superb condition with original box and key!

Price: \$1,275.00

#64. Well Hallmarked & Heavily Embossed Fancy Dial Platform Miniature Table Clock With Key

Swiss; Serial # 805; Circa Date: 1890

CASE: Measures 6" high, 2" wide and 1-3/4" thick. Miniature, open face, sterling silver, repousse with Cherub, dog and bird decorations.

DIAL: Fancy, porcelain, Roman numerals, spade hands.

MOVT: Keyset, No. 805, lever escapement, gilt, full plate, platform.

C 3	D 3	M 3	R 6
-----	-----	-----	-----

Experts Opinion: Cherubs, dogs, birds and Rococo repousse covers this amazing case. Fancy porcelain dial and high grad platform rounds out this beauty!

Price: \$1,300.00



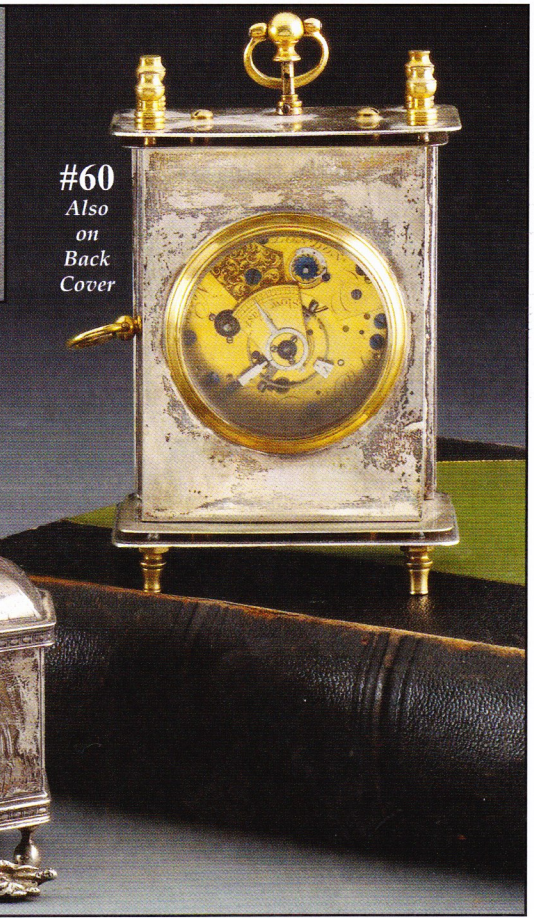
#58
Side



#58
Also on
Front Cover



#59
Dial



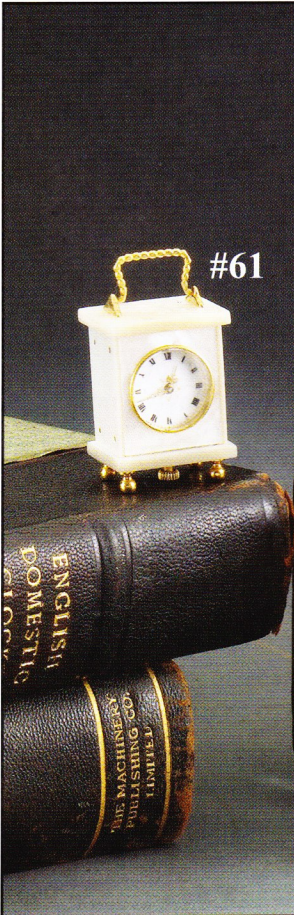
#60
Also
on
Back
Cover



#59
Mouv.



#59



#61



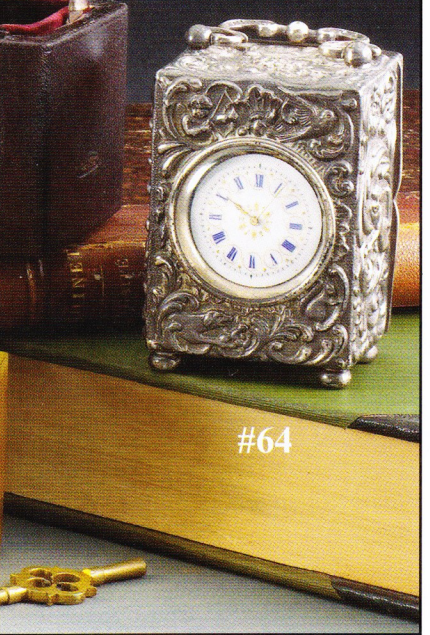
#62
Also on
Back Cover



#63



#63
Mouv.



#64

#65. Interesting Rock Crystal Early Verge Fusee Table Clock (Dutch Made)

Ths. Whitt (Dutch) London, U.K.; Circa Date: 1820

CASE: Measures 4" high, 2-1/2" wide and 1" thick. Miniature, open face, rock crystal, plain.

DIAL: White, porcelain, Arabic numerals, Breguet hands, signed "Ths. Whitt, London."

MOV: Keyset, two-tone, verge/fusee escapement, gilt, full plate, signed.

C 3	D 3-44	M 3	R 5
-----	--------	-----	-----

Experts Opinion: Signed by a non-exist British horologist. This Dutch movement is quite nice in appearance, often made to resemble British watches. These early copes are quite collectible!

Price: \$800.00

#66. The Inconceivable Bird Cage Early Verge Fusee Miniature Table Clock In Original Leatherette Box & Key

Hubert Laine (Amsterdam, Holland); Circa Date: 1710

CASE: Measures 4-1/2" high, 2-1/4" wide and 1" thick.

Miniature, open face, gilt, brass bird cage form, plain with barleycorn.

DIAL: Silver color, embossed, silver, Arabic/Roman numerals, filigree hands.

MOV: Keyset, verge/fusee, gilt, full plate, signed.

C 3	D 3-6	M 3	R 7
-----	-------	-----	-----

Experts Opinion: One of the earliest of the collection. Great-embossed silver dial on this early fusee movement housed in a unique case. Quick – it won't last long!

Price: \$3,300.00

#67 "The Serpent Clock" Eerie Snake In The Hunt For A Bird Decors This Bizarre Early Verge Fusee Miniature Clock With Key

Ino Brancker (Dutch), Liverpool, U. K.; Circa Date: 1810

CASE: Measures 5" high, 1-3/4" wide and 1" thick. Miniature, open face gilt with rhinestones, snake and a bird.

DIAL: White, porcelain, Arabic/Roman numerals, filigree hands.

MOV: Keyset, verge/fusee, gilt, cutaway, full plate, signed.

C 3	D 3-01	M 3	R 7
-----	--------	-----	-----

Experts Opinion: Very interesting snake after a bird scene. Rhinestones and garnets make this a very attractive form clock. Dutch made movement to resemble the English craft! Very nice!

Price: \$1,525.00

The Next Three Clocks Are Just Amazing! Move Quick!

#68. Very Rare Oversized Early Verge Fusee Movement In A Silver & Rock Crystal Cloisonné Enamel Table Clock With Case & Key

Rose & Sons (London, U. K.); Serial # 16116 Circa: 1830s

CASE: Measures 5-1/2" high, 2-3/4" wide and 1" thick.

Miniature, open face, coin silver, figural statues.

DIAL: White, oversized, porcelain, Roman numerals, filigree hands, signed "Rose & Sons."

MOV: Keyset, No. 16116, verge/fusee, gilt, full plate, signed.

C 3	D 3	M 3	R 8
-----	-----	-----	-----

Experts Opinion: This extraordinary clock has a crystal front and back. The special case must have taken many months to craft fine detail on statues and enamel work. A real masterpiece!

Price: \$4,550.00

#69. Oh My Goodness! Amazing Horoscope Dial, Painted Porcelain, Enamel (Cloisonné) Gemstones, Silver Figures & One Of The Finest Early Verge Fusee Movements All Make Up This Unbelievable Timepiece With Key

Ja. Murray (London); Serial # 1289: Circa Date: 1810

CASE: Measures 10" high, 5" wide and 2" thick. Open face, gilt, enamel, precious stones and silver figures.

DIAL: Fancy, hand painted and wonderful, porcelain, horoscope, filigree hands, signed "Chariot & Horses With Goddess.

MOV: Keyset, No. 1289, verge/fusee escapement, gilt, full plate, signed.

C 3	D 3	M 3	R 9
-----	-----	-----	-----

Experts Opinion: I've been in this business for over 35 years and this is truly an incredible clock, the dial alone is extraordinarily rare. Just Wow! Probably Vienese Market! You will never see another until #70.

Price: \$12,550.00

#70. "Holy Cow"! Silver With Gold Overlay Statues Of Knights Guard "George & The Dragon", Various Gemstones Pave The Cloisonné Enamel Case. Embossed Silver Dial & Matching Key

Reicheneder (Braunat, France); Circa Date: 1745

CASE: Measures 12" high, 5-1/2" wide and 2-1/2" thick.

Open face, gilt, floral/barleycorn/geometric/enamel, statues and gemstones.

DIAL: Silver in color, embossed, silver, Arabic/Roman numerals, filigree hands.

MOV: Keyset, verge/fusee, gilt, full plate, signed.

C 3	D 3	M 3	R 9
-----	-----	-----	-----

Experts Opinion: How can I describe this rare clock? Precious, admirable, elegant, excellent, exquisite Nope! Just look at the photos and call quick – unimaginable! The last two clocks should be kept together on the same shelf. Interested? – Call!

Price: \$12,550.00



#65

#65
Movt.

#67
Movt.

#66
Movement
Also on
Back Cover

#67



#68

Also on
Back
Cover

#69

Also on
Front
Cover

#70

Also on
Front
Cover

#69
Dial

#70
Dial



ASHLAND continues to be a major buyer...

in the field of horology and vertu with extreme purchasing power. Please give ASHLAND the opportunity to make an offer on your valued collection when the time comes to liquidate your investment.

Coming in 2010
Grand Opening

- * Informative Articles
- * Market Updates
- * Calendar of Events
- * Appraisals
- * Authentication Service
- * And Much More ...



- * Pocket Watch Sales
- * Wristwatch Sales
- * Jewelry Sales
- * Auctions
- * Accessories
- * Ephemera

R. M. Gilbert Proprietor