

# ASHILAND

*A Catalog of Fine and Important Wristwatches*



Call Toll Free  
1-800-424-5353

or call  
1-941-957-3760

FAX  
1-941-365-4931

SUITE 200, 640 SOUTH WASHINGTON BLVD. • SARASOTA, FL 34236-7137

# ASHLAND

1-800-424-5353  
OR  
1-941-957-3760  
FAX  
1-941-365-4931

- A. Due to rapid sales, ordering by phone is recommended. Please ask for RICHARD GILBERT or JIM WOLF at  
B. Please make checks or money orders payable to: **ASHLAND**.  
We also accept Visa, MasterCard and American Express  
C. ASHLAND offers a full seven (7) day return privilege on items improperly described.  
D. Orders can be held for 45 days with a 20% non-refundable deposit.  
E. Office Hours are 9 a.m. to 5 p.m., Monday through Friday.  
F. Fax orders can be placed 24 hours a day. Items are reserved on a first come basis at full list price only.  
Fax reservations will be confirmed ASAP.

## ABBREVIATIONS

YG — Yellow Gold	PS — Pin Set	CT — Carat	C — Circa
WG — White Gold	SS — Stem Set	TW — Total Weight	MIN — Minute
# — Serial Number	KWKS — Keywind/Keyset	Subsec. — Subsidiary seconds	HR — Hour
OF — Open Face	J — Jewels	REF — Reference Number	NM — Near Mint
HC — Hunter Case	Os-12's — Ladies Sizes	ADJ — Adjusted	VF — Very Fine
LS — Lever Set	12's - 18's — Men's Sizes	CAL — Calibre	Movt. — Movement
R — Rarity Grade	MM — Millimeter	RGP — Rolled Gold Plate	

## GUIDE TO GRADING

The following guide is presented to help you determine the overall quality of a particular timepiece. Bear in mind that this is a guide only, and thus a numerical range is given for each category. A mint watch that shows no wear but is very lightly marred would not be dropped down to excellent because of this minor blemish. The fact remains that the overall condition is still mint. The reverse of this, of course, would be a watch that is graded excellent even though the case shows very little wear. It may show a brassy look and thus the excellent rating. The most important factor is that every watch sold by ASHLAND is fairly priced in relationship to its grade.

## CASES AND MOVEMENTS

- UNUSED — 100% - Never worn, no problems whatsoever, looks the same as it did when it left the jeweler's store. Watches in this condition are seldom seen and command significant premiums.  
MINT 90% — 99% - A seldom used watch showing very minor handling blemishes.  
NEAR MINT — 80% - 89% - Shows evidence of occasional use, no easily noticeable signs of wear. A very presentable watch.  
EXCELLENT — 70% - 79% - Wear and occasional use are evident, but there may be minor brass on gold-filled cases. There may be minor dings or scratches.  
FAIR — 50% - 69% - Daily and frequent use are obvious, easily noticeable brass and wear, and possible dings and scratches.

## DIALS

- SUPERB — No hairlines, scratches, cracks, flakes or chips visible. In metal dials, full original color, no stains, blemishes or scratches.  
VERY FINE — Very attractive but has a light hairline or a couple of edge flakes.  
AVERAGE — A few hairlines or a well repaired flake can be found. In metal dials, some discoloration or other slight problems.  
BELOW AVERAGE — Some damage or other serious problems. In metal dials, discoloration to a point where it should be refinished.

## RARITY GRADE

A select group of watches in this catalog have been assigned a "rarity grade" which will appear in the description heading. The total production number of U.S. made pocket watches and vintage wrist watches are fairly well known and accessible, unlike the large and more varied output of European makers and of early horological examples. Therefore, this simplified 1 thru 10 numerical grade is designed to assist collectors and investors in determining the scarcity of a given timepiece in today's market (#1 is considered common to #10, which is an extremely rare item).

The following factors are the basis of assigned rarity levels:

- Market availability, both past and present.
- Technical quality and innovative design.
- Historical importance.
- Condition in relationship to other examples of similar type.
- Artistic case design, i.e. enamel, unusual shape or form pieces.
- Low survival rate of similar types.
- Investment potential for increase in demand and price.

A rarity grade will be assigned to highlight items which offer strong investment potential (generally items of level 5 thru 10).

We hope this new concept will assist you when making purchasing decisions, and we encourage you to call if more information or details are needed.

Send all checks to: ASHLAND, Suite 200, 640 South Washington Blvd., Sarasota, FL 34236-7137

All Foreign orders should be paid by Bank Wire Transfer

Northern Trust Bank of Florida

ABA #066009650

Checking Account Number 718936

Credit to ASHLAND INVESTMENTS



**1. BAUME & MERCIER LADY'S BAUMATIC C. 1970s**

**Case:** Beautiful two-tone., stainless screw back case with gold screw down crown, gold fluted 18K yellow-gold bezel, near mint condition, 25mm, REF. 1216.

**Dial:** Superb, white enamel, black Roman chapters, gold rectangular minute bars, black minute track, gold batons, date window at 3 o'clock, dial signed "Baume & Mercier Baumatic."

**Movt:** High-grade, 17 jewel, automatic. ....\$725.00

**2. SWISS EARLY ROSE-GOLD WATCH & UNIQUE BAND C. 1910 R-3**

**Case:** 14K rose-gold, hinged back, 27mm. Near mint condition with mint 14K fancy spring expansion style bracelet, crown is on left.

**Dial:** Porcelain, superb, red numeral at twelve, blue spade hands.

**Movt:** 10 Jewel, gilt bridge, cylinder escapement, pin-set. ....\$725.00

**3. SWISS EARLY DIAMOND & RUBY WRIST WATCH C. 1910 R-3**

**Case:** 24mm, hinged back, 18K, No. 45680, near mint condition with four large rose-cut diamonds and four very impressive faceted rubies. Total diamond weight approximately .50 Ct. This early and rare watch comes in a curb link 18K gold bracelet, overall length 6-3/8".

**Dial:** White enamel, superb with Arabic chapters, red numeral at 12, gold Louis XIV hands, gold minute dots.

**Movt:** Gilt bridge model, 10 jewel with cylinder escapement, pin-set mechanism, good running order. A wonderful vintage watch! ....\$1,525.00

**4. ESKA SWISS DIAMOND & ROSE-GOLD BRACELET WATCH C. 1940s**

**Case:** 18mm, 18K gold with impressive full diamond bezel, diamond accents on the center frame, total diamond weight 1.12 Ct. Beautiful tapered bow tie-style high-quality mesh bracelet which is 16mm across, mint condition.

**Dial:** Superb, silver with sunburst pattern, rose-gold Arabic chapters, rose-gold batons, dial signed "Eska."

**Movt:** Swiss, 17 jewel, manual wind. ....\$1,225.00

**5. SWISS LADIES COVERED DIAL GOLD WATCH C. 1960s**

**Case:** 14K, mint, 19mm wide, 7-1/4" long, braided outer edges, flowers on center links.

**Dial:** Mother-of-pearl, superb, black numerals, gold batons.

**Movt:** 17 Jewel, manual wind. ....\$825.00

**6. BOUCHERN-PARIS (OMEGA) ULTRA HIGH-QUALITY LADY'S GOLD BRACELET WATCH C. 1950s R-3**

**Case:** 18K white-gold, rectangular, signed "73747," also signed "Bouchern Paris," marked with Omega symbol, mint condition, 17 x 30mm with original high-quality white-gold band. The band attaches to the engraved top case area by sliding out from the side edge, overall length is 6-3/8", mint condition.

**Dial:** Superb, white-gold with checkerboard pattern, white-gold circular hour marks, white-gold straight batons.

**Movt:** Caliber 244, Omega, 17 jewel, manual wind. ....\$2,050.00

**7. BUECHE GIROD MAGNIFICENT FIRST QUALITY RUBY & DIAMOND BRACELET WATCH C. 1950s R-5**

**Case:** 18K, round, set within a beautiful high-quality wide woven 18K yellow-gold bracelet (the bracelet measures 1-1/8" across), overall length 7-1/2". The gold clasp is signed "R. C. K." In mint condition, this very impressive bracelet has a total weight of 78 dwts. (approx. 4 oz.). The upper top area lifts up to reveal the inner round gold case which measures 15mm in diameter. The case is set with seven spectacular first quality ruby cabochons. The largest measures approximately 6 x 5mm, the total weight is 3.0 Cts. White-gold mounts hold spectacular high-quality VVS grade diamonds. The diamonds have a total weight of 4.6 Cts. Ten diamonds surround each of the top five ruby stones and the bottom two settings carry nine diamonds each.

**Dial:** Superb, signed "Bueche-Girod," silver with yellow-gold hour markers, gold batons.

**Movt:** Super high-quality, 17 jewel, Swiss, manual wind. One of the finest quality ruby and diamond bracelet watches we have ever presented! .....\$6,050.00

**8. EBEL FABULOUS LADY'S GOLD & LAPIS LAZULI BRACELET WATCH C. 1960s R-5**

**Case:** Magnificent, mint, heavy, 18K, signed "Ebel Watch Co." 7-3/4" long bracelet which weighs an impressive 117.6 dwts., the bracelet is 1-3/4" wide. Case No. 878038, REF. 153. Magnificent, one-of-a-kind design, heavy textured gold outer links, rectangular Lapis Lazuli central panels. The bracelet is designed on a curved bias to conform with the wider/thinner areas on the lady's wrist.

**Dial:** Superb, Lapis Lazuli with beautiful gold speckling, gold batons, gold hour marks, signed "Ebel."

**Movt:** 17 Jewel, manual wind, signed "Ebel," Incabloc balance. A superior item! .....\$4,550.00

**9. LE COULTRE DIAMOND WRIST WATCH C. 1955**

**Case:** 18K, white-gold with 14K white-gold bracelet, 15mm, 6-7/8", .70 Ct. total diamond weight, mint and pretty.

**Dial:** Very fine, signed "Le Coultre," white-gold markers and hands.

**Movt:** 17 Jewel, Caliber 490/BW, manual. ....\$775.00

**10. SWISS "PETITE BAGUETTE" PLATINUM & DIAMOND WATCH C. 1930s**

**Case:** Platinum #14639, mint with .70 Ct. total diamond weight, 9 x 31mm.

**Dial:** Superb, Arabic chapters, blue batons.

**Movt:** 17 Jewel, Caliber 91, signed "Mimo Watch Co." .....\$825.00

**11. HAMILTON PLATINUM & DIAMOND WATCH C. 1950**

**Case:** Platinum 14 x 39mm with 1.02 Ct. total diamond weight, mint condition.

**Dial:** Very fine, black minute track and Arabic numerals, blue batons.

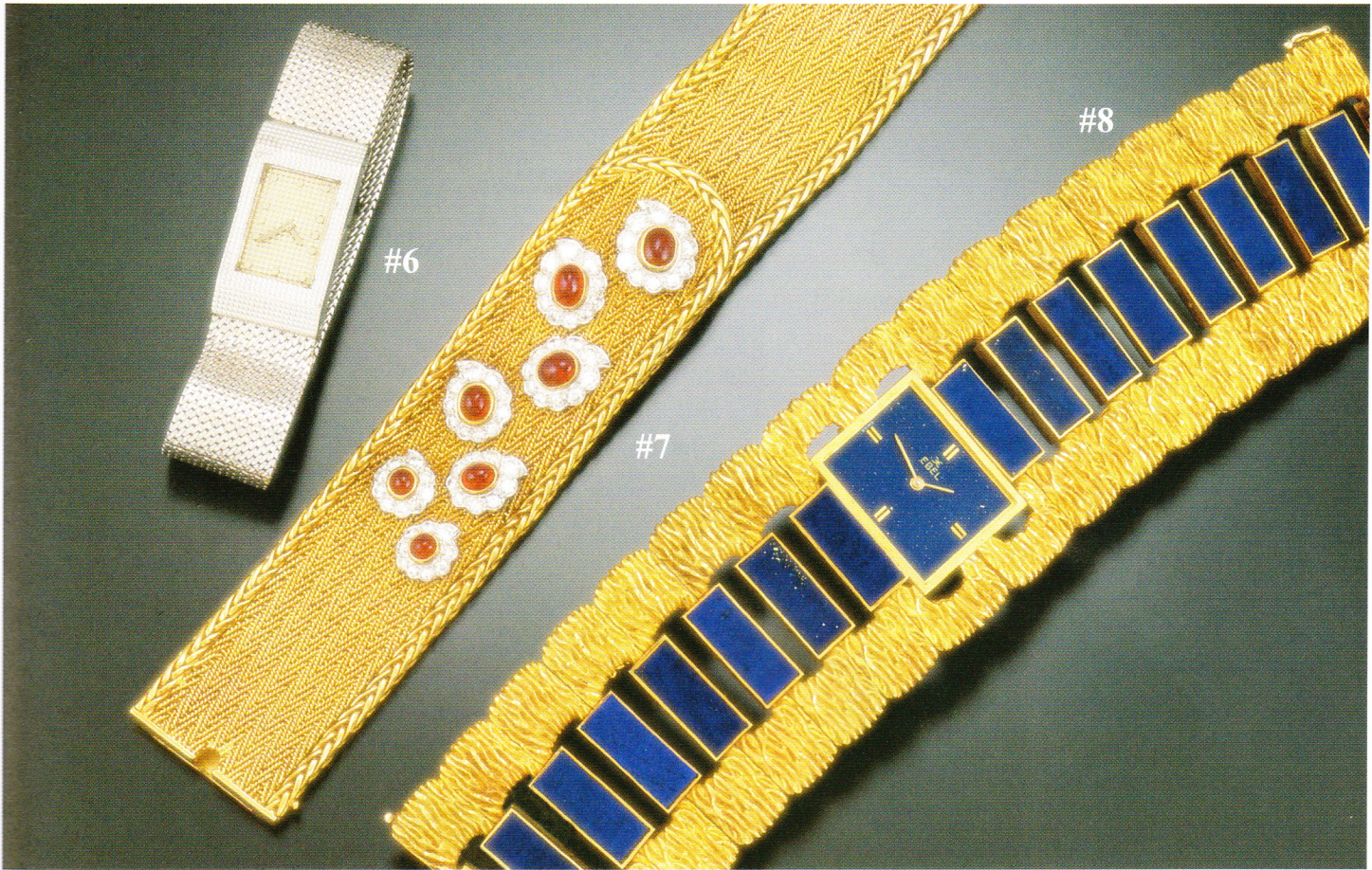
**Movt:** 17 Jewel, manual wind, Grade 721. ....\$1,225.00

**12. FRENCH RARE PLATINUM & DIAMOND BAGUETTE WATCH C. 1930 R-4**

**Case:** Platinum, 13 x 50mm with round, baguette and trapezoid cut diamonds. Total weight 2.2 Cts. The band comes with platinum and diamond fittings and clasp, approx. 6-3/8" long, mint condition.

**Dial:** Silver, very fine with Arabic numerals, blue batons.

**Movt:** No. 3930, 18 jewels, signed "France Adjusted." .....\$4,550.00



**13. INGERSOLL MICKEY MOUSE ORIGINAL WRIST WATCH C. 1937 R-3**

**Case:** Near mint, 32mm, base metal with original band.

**Dial:** Original, very fine, Arabic numerals, rotating "three mice" subsidiary seconds dial.

**Movt:** Signed "Ingersoll," manual wind, pin lever. ....\$675.00

**14. SWISS RARE WOODROW WILSON CAMPAIGN WATCH C. 1912 R-4**

**Case:** Nickel silver, 27 x 43mm, snap back, near mint, extended lower area with sepia tone portrait of Woodrow Wilson.

**Dial:** Silver with fancy central flower and geometric design, very fine, Arabic numerals.

**Movt:** 15 Jewel, manual wind, lever. Very unique! ....\$2,550.00

**15. LUCIEN PICCARD GOLD COIN WATCH C. 1970s**

**Case:** 14K yellow-gold, No. 49466, signed "Lucien Piccard" on the back. Coin edge design on outer rim, blue sapphire stone in winding crown, near mint condition, 22mm.

**Dial:** Beautiful American eagle at center, gold dial, signed "Lucien Piccard," in the style of a \$5.00 gold piece, superb condition, black baton hands.

**Movt:** 17 Jewel, Lucien Piccard, manual wind. ....\$925.00

**16. SWISS TWENTY DOLLAR GOLD COIN WATCH C. 1970 R-3**

**Case:** Solid gold 1897 Liberty twenty dollar coin, 35mm, 18K inner case, mint, flip-open top.

**Dial:** White with black Arabic numerals and batons, superb, signed "Schochet."

**Movt:** 17 Jewel, ultra thin, manual, adjusted 3 positions, signed "Craig Watch Co." ....\$2,550.00

**17. LORD ELGIN DIRECT READ DIGITAL WATCH C. 1940s R-3**

**Case:** REF. 7775, yellow-gold, signed "Lord Elgin" on the top panel, 31mm, near mint condition.

**Dial:** Superb, off-white rotating disc with Arabic numerals for the hours and minutes. The digital discs appear through a triangular window on the front of the case.

**Movt:** 21 Jewel, Grade 719, adjusted, manual wind. ....\$525.00

**18. ELGIN DIRECT READ "GOLF BALL" WATCH C. 1950s R-3**

**Case:** RGP/steel back, 30mm, mint, REF. 9587.

**Dial:** Very fine rotating hour and minute discs.

**Movt:** 17 Jewel, Grade 717, manual wind. ....\$600.00

**19. GRUEN CLASSIC CURVEX WRIST WATCH C. 1940s R-3**

**Case:** 43 x 22mm, very deep curved back design, yellow-gold filled, near mint condition with fancy scalloped form top line designs.

**Dial:** Superb, silver, gold Arabic chapters, black minute track, gold leaf hands.

**Movt:** Caliber 370, 17 jewel, Curvex, manual wind in super sharp condition. ....\$875.00

**20. GRUEN CURVEX VINTAGE WRIST WATCH C. 1930s R-3**

**Case:** Yellow-gold filled, curved top, 46 x 20mm. Stainless back, case signed "Gruen," near mint condition.

**Dial:** Two-tone silver and white dial, very fine with yellow-gold Arabic chapters, gold leaf pointers.

**Movt:** Caliber 500, Gruen, 15 jewel, manual wind movement. ....\$875.00

**21. GRUEN GOLD ART DECO "VERITHIN" C. 1940s**

**Case:** 23 x 40mm, 14K, near mint, fancy lugs.

**Dial:** Superb, silver, gold markers and batons, subsidiary seconds.

**Movt:** 17 Jewel, Grade 430, manual wind. ....\$625.00



## ASHLAND

---

### 22. MOVADO BEAUTIFUL ROSE-GOLD AUTOMATIC C. 1950s

**Case:** REF. 6101, 18K rose-gold, snap back, mint condition, 32mm.

**Dial:** Silver, superb, signed "Movado," black minute track, black Arabic chapters, black batons, center sweep.

**Movt:** Bumper-style, early auto wind, signed "Movado Factories," 18 jewel. Very collectible, very nice sharp condition. ....\$625.00

### 23. DOXA RED-GOLD CENTER SECONDS WATCH C. 1950

**Case:** 36mm, 14K red-gold, near mint, curved lugs, snap back.

**Dial:** Superb, champagne gold with rose markers, center seconds, outer fifth of a second marks.

**Movt:** 18 Jewel, Doxa S. A., manual, REF. 1147. ....\$525.00

### 24. WALTHAM EARLY GOLD WRIST WATCH C. 1915 R-3

**Case:** Hinged back, 14K yellow-gold, No. 187485. Near mint condition with wire lugs, 33mm.

**Dial:** Very fine, porcelain, signed "Waltham U. S. A." Single sunk with Arabic chapters, skeletonized spade pointer, black minute track.

**Movt:** 17 Jewel, nickel, signed "Lady Waltham Adjusted." ....\$925.00

### 25. LONGINES RARE EARLY TONNEAU WATCH C. 1920s R-3

**Case:** Ultra-rare, 14K, elongated oval case, hinged design with wire lugs, near mint condition, 28 x 46mm.

**Dial:** Superb, silver, Breguet moon hands, black Arabic chapters, black minute.

**Movt:** Caliber 10.85, 17 jewel, manual wind, signed "Longines No. 3603119." ....\$1,275.00

### 26. PIAGET MALACHITE DIAL WATCH C. 1970s

**Case:** REF. 705, 27mm, near mint with 18K Piaget buckle.

**Dial:** Superb, beautiful green malachite with gold batons and gold Roman numerals.

**Movt:** 18 Jewel, No. 730226 adjusted 5 positions and temperature, Caliber 9P. ....\$2,050.00

### 27. PIAGET PLATINUM & DIAMOND WRIST WATCH C. 1930s R-4

**Case:** 18mm, platinum with diamond bezel, filigree top and bottom frames and double row diamond and platinum band. TW 1.84 Ct., 7" long, near mint condition.

**Dial:** Silver, superb, white markers, signed "Piaget."

**Movt:** Signed "Piaget," 17 jewel, adjusted. ....\$3,050.00

### 28. INTERNATIONAL WATCH CO. FOR TIFFANY C. 1946 R-3

**Case:** 14K, 30mm, mint, fancy lugs, 1946 First National Bank of N.Y. presentation on back.

**Dial:** Superb, signed "Tiffany & Co., gold Arabic numerals, gold leaf hands.

**Movt:** 17 Jewel, high-grade, nickel bridge, Caliber 83, adjusted 3 positions, signed "International Watch Co." ....\$1,025.00

### 29. BUECH GIROD FABULOUS HEAVY WHITE-GOLD WRIST WATCH C. 1970s

**Case:** Massive, heavy, 18K, high-quality, fancy link bracelet, overall length 7-1/4". Square white-gold case, mint condition, 23mm.

**Dial:** White-gold with beautiful textured crisscross patterns, signed "Buech Girod." Superb with Roman chapters and black batons.

**Movt:** High-grade, 17 jewel, manual wind. ....\$2,350.00





**30. LONGINES PINK-GOLD RECTANGULAR WITH GOLD BAND C. 1940s R-3**

**Case:** 20 x 42mm, near mint condition, 14K pink-gold, curved back with 1943 presentation inscription. The unique pink-gold case comes with a gold 14K brick link band, overall length 6-3/4".

**Dial:** Very fine with gold Arabic chapters, gold leaf hands, subsidiary seconds.

**Movt:** Caliber 9L, 17 jewel, rectangular, manual wind, No. 6284178. ....\$1,225.00

**31. OCTO (SWISS) ROSE-GOLD BRACELET WATCH C. 1940s R-3**

**Case:** Very impressive, heavy, 18K rose-gold half barrel link-style bracelet is featured here with an overall length of 7-1/4". the case and bracelet are mint, the case measures 26mm across. 18K pink-gold with very fancy deep curved tear drop form lugs.

**Dial:** Superb, silver, signed "Octo," black Roman chapters, gold bead hour markers, subsidiary seconds, gold batons.

**Movt:** 15 Jewel, round, Swiss, signed "Octo," manual wind. ....\$1,225.00

**32. LONGINES RECTANGLE WITH DIAMOND DIAL C. 1949 R-3**

**Case:** 14K, 23 X 36mm, mint, 1949 inscription on back.

**Dial:** Superb with diamond markers and golden dot markers, white batons, subsidiary seconds.

**Movt:** 17 Jewel, rectangular, manual wind. ....\$725.00

**33. AGASSIZ EARLY GREEN-GOLD WRIST WATCH C. 1930 R-3**

**Case:** 18K green-gold, hinged back, signed "Agassiz," near mint, 24 x 38mm.

**Dial:** Average, luminescent Arabic numerals and spade hands.

**Movt:** Round, nickel bridge, 18 jewel, 6 adjustments, signed "Agassiz." ....\$1,525.00

**34. GIRARD PERREGAUX "GYRO-MATIC" C. 1955 R-3**

**Case:** 18K, very heavy with four screws on back, florentined bezel, 30 x 40mm, near mint.

**Dial:** Fancy, superb with marble pattern and weave pattern, gold hands.

**Movt:** Girard Perregaux, 39 jewel, automatic. ....\$1,225.00

**35. SWISS DUO-DIAL DOCTORS WATCH C. 1930 R-3**

**Case:** RGP, near mint, 21 x 39mm.

**Dial:** Very fine, signed "Olympic," blue batons, black numerals and markers.

**Movt:** 7 Jewel, manual, signed "Olympic Watch Co." ....\$925.00

**36. ELGIN DOCTORS WATCH C. 1940 R-4**

**Case:** RGP, near mint, 20 x 43mm.

**Dial:** Very fine, two-tone silver and gold, kite hands, Arabic numerals.

**Movt:** S457538, 17 jewel, Grade 673. ....\$1,025.00

**37. ILLINOIS VINTAGE RECTANGLE C. 1928 R-3**

**Case:** WGF, 27 x 39mm, near mint, monogram on back.

**Dial:** Superb, offset seconds, luminescent Arabic numerals, open spade hands.

**Movt:** 15 Jewel, bridge, No. 5,211,593 ....\$425.00

**38. HAMILTON SAVITAR II ELECTRIC 1960s**

**Case:** Mint, yellow-gold filled, 30 x 37mm, unique "tube" lugs.

**Dial:** Very fine, gold rectangular hour bars, gold batons.

**Movt:** Grade 505 electric. ....\$575.00

**39. HAMILTON "WESLEY" GOLD RECTANGLE C. 1940s**

**Case:** 14K, 23 x 41mm, mint condition.

**Dial:** Superb, gold numerals and dots, gold hands.

**Movt:** Grade 982M, 19 jewel, M172615. ....\$600.00



**40. OMEGA TWO-TONE CONSTELLATION C. 1950s**

**Case:** Steel with gold bezel, lugs and observatory logo, screw back, near mint, 34mm. Original Omega gold-filled and steel bracelet, deployment clasp.

**Dial:** Superb, gold bar markers, gold hands.

**Movt:** Automatic, 24 jewel, adjusted 5 positions, Caliber 505. ....\$775.00

**41. OMEGA MINT GOLD SEA MASTER C. 1950**

**Case:** Screw back, 14K, REF. 2520, 34mm, heavy lugs.

**Dial:** Superb, gold markers, gold;d hands, blue sweep.

**Movt:** Caliber 352, bumper automatic, 17 jewel, adjusted 5 positions. ....\$925.00

**42. OMEGA EARLY AUTOMATIC C 1940s R-3**

**Case:** 18K, snap back, near mint, monogram on back, 32mm.

**Dial:** Very fine, gold markers and hands, outer fifth of a second marks.

**Movt:** No. 10,703,897, 17 jewel, bumper automatic. ....\$1,025.00

**43. OMEGA INTERESTING AUTOMATIC WRIST WATCH C. 1950s**

**Case:** Heavy square-style case, 32mm, 18K, signed "Omega 162-052." Near mint condition, 1946-1975 Spanish inscription on the back.

**Dial:** Very fine, gold with rectangle hour markers, black batons, gold center seconds, date window at 3 o'clock.

**Movt:** Interesting high-grade Omega auto wind movement, Caliber 1012. Highly jeweled! ....\$875.00

**44. OMEGA FABULOUS DE VILLE AUTOMATIC WITH FANCY DIAL C. 1970s**

**Case:** Extra-heavy with a total weight of 54.3 dwts. This 18K gold case comes with a gold heavy link Omega band, overall length approximately 7-3/8". The case is near mint with a matte finish, 27 x 37mm, REF. 149, signed "Omega."

**Dial:** Beautiful blue with sunburst finish, superb, signed "Omega" in white lettering. White batons, light-blue hour markers, dial is also signed "De Ville Automatic."

**Movt:** Auto wind, 24 jewel, adjusted 2 positions, Caliber 671. ....\$2,050.00

**45. ZODIAC AUTOMATIC WITH MOON PHASE & CALENDAR C. 1955 R-3**

**Case:** REF. 908, stainless, snap back, near mint, 34mm, fancy lugs.

**Dial:** Black, superb, day and month windows, moon dial at six, outer date numerals.

**Movt:** Caliber 1402, 17 jewel, automatic. ....\$775.00

**46. CYMA WATER PROOF CHRONOGRAPH WRIST WATCH C. 1950**

**Case:** Large, stainless model, 40mm, excellent condition (some pitting on top bezel). Unique two-piece design, Model 992-257, round push buttons.

**Dial:** Superb, silver, blue outer telemeter calibrations, black seconds track, 60-minute subsidiary seconds, 30-minute register at 3 o'clock, black Arabic chapters. Dial is signed "Cyma" with black leaf hands, red center fly back sweep.

**Movt:** High-grade, nickel, 3/4 plate, 17 jewel, manual wind. ....\$525.00

**47. GALLET NEW/OLD STOCK THREE REGISTER CHRONO C. 1970s R-3**

**Case:** Mint, 39mm, stainless, screw back, black bezel.

**Dial:** Superb, white telemeter marks, 30-minute register, 12-hour register, white batons and hour markers.

**Movt:** 17 Jewel, Valjoux 7736, manual wind, signed "ESA." ....\$1,225.00

**48. GALLET NEW/OLD STOCK CHRONOGRAPH C. 1970s R-3**

**Case:** 38mm, mint, stainless, screw back, signed "Chronographe 20 Atmos," rotating bezel.

**Dial:** Red & white telemeter marks, 30-minute register, offset seconds, red sweep, white batons.

**Movt:** 17 Jewel, Landeron 51, manual wind. ....\$1,525.00



**49. BREITLING PREMIER CHRONOGRAPH C. 1960s R-3**

**Case:** Stainless, screw back, round pushers, 36mm, mint condition.

**Dial:** Superb, signed "Breitling Premier," white batons, white hour bars, 30-minute register, 12-hour register.

**Movt:** 17 Jewel, manual wind, signed "Breitling." .....\$1,225.00

**50. BREITLING COSMONAUTE NAVITIMER C. 1970s R-4**

**Case:** RGP and steel, REF. 809, 41mm, near mint, slide rule bezel.

**Dial:** Very fine, original, 24-hour luminescent numerals, 30-minute register, 12-hour register, gold batons.

**Movt:** 17 Jewel, manual, incabloc balance. ....\$2,050.00

**51. SWISS RARE EARLY SINGLE BUTTON CHRONO C. 1915 R-5**

**Case:** 18K, hinged back, signed "Olympic Watch Co.," excellent condition, 33mm.

**Dial:** Rare porcelain, very fine, signed "Olympic Watch Co. Luminescent spade hands, center sweep activated from a button on the crown, 30-minute register, offset seconds, red numeral at 12 o'clock

**Movt:** 17 Jewel, manual, signed "Olympic Watch Co., J. Weil & Co.," three adjustments. ....\$3,050.00

**52. ULYSEE NARDIN ROSE-GOLD SINGLE BUTTON CHRONO C. 1940 R-5**

**Case:** 18K rose-gold, mint, 34mm, snap back, single rectangular button.

**Dial:** Gold markers and hands, 30-minute register, blue sweep, superb condition.

**Movt:** No. 27,525, signed "Ulysee Nardin," 17 jewel, manual wind. ....\$4,550.00

**53. SWISS L'HEURE D'AMOUR WATCH WITH EROTIC AUTOMATON C. 1990**

**Case:** 36mm, signed "Value Swiss, Limited Edition N0015," transparent back with hand painted erotic scene. Motion is activated when button at 4 o'clock is pushed in.

**Dial:** Silver, signed "Value Swiss," blue Breguet moon hands, date window, very fine condition.

**Movt:** Automatic wind, Swiss made. ....\$2,050.00

**54. ROLEX CELLINI WRIST WATCH C. 1980**

**Case:** REF. 4109, 18K, 26mm, near mint. Gold-filled Rolex buckle.

**Dial:** Superb, gold with bar markers, gold batons.

**Movt:** Caliber 1601, 19 jewel, manual wind. ....\$1,325.00

**55. ROLEX LADIES EARLY PERPETUAL C. 1950s**

**Case:** No. 154757, REF. 6509, 18K, oyster, near mint, 24mm.

**Dial:** Very fine, gold "arrow" markers, subsidiary seconds, gold hands.

**Movt:** Caliber 1120, 27 jewels, automatic, adjusted 5 positions & temperature. ....\$2,550.00

**56. ROLEX LADY'S WHITE-GOLD CELLINI WRIST WATCH C. 1970**

**Case:** 18K white-gold, REF. 3803, No. 2643460, mint condition with high-quality 18K white-gold, original bracelet, overall length approximately 7-1/4". Center case measures 23 x 25mm.

**Dial:** Very fine, deep silver, signed "Rolex Geneve Cellini" in white lettering. White-gold rectangular hour markers and batons.

**Movt:** Caliber 1600, 19 jewel, manual wind, mint condition, 9 lignes. ....\$2,050.00



**57. ROLEX PRECISION WRIST WATCH C. 1950s R-3**

**Case:** REF. 8029, stainless, snap back, 37mm, near mint condition, fancy curved lugs.

**Dial:** Average, signed "Rolex Precision," white leaf hands, center sweep, white hour bars.

**Movt:** 17 Jewel, manual wind, signed "Patent Super balance." .....\$1,725.00

**58. ROLEX SCARCE EARLY PRECISION WRIST WATCH C. 1948 R-3**

**Case:** 36mm, REF. 4400, stainless, 36mm, near mint condition.

**Dial:** Gold hands, subsidiary seconds, white enamel dial, superb condition, gold Arabic numerals.

**Movt:** 17 Jewel, manual wind, signed "Rolex Precision." .....\$1,625.00

**59. ROLEX TWO-TONE OYSTER DATE JUST WATCH C. 1991**

**Case:** No. E186118, REF. 6900A, fluted bezel, 25mm, near mint, steel and gold. 14K and steel oyster bracelet.

**Dial:** Gold, superb, quick-set date, gold markers.

**Movt:** Caliber 2135, 29 jewel, auto wind, adjusted. ....\$2,550.00

**60. ROLEX OYSTER PERPETUAL DATE JUST WATCH C. 1979**

**Case:** REF. 6827, No. 5,806,831, gold and steel, 3/4 size, 30mm with steel and gold oyster band, near mint condition.

**Dial:** White, superb, Roman numerals and gold markers, gold batons.

**Movt:** Caliber 2030, 28 jewel, auto wind, adjusted. ....\$2,450.00

**61. ROLEX TWO-TONE DATEJUST C. 1955**

**Case:** No. 220869, REF. 6605, steel oyster with fluted gold bezel, near mint, 35mm.

**Dial:** Very fine, date at 3 o'clock, gold hands and hour indexes, black minute marks.

**Movt:** Caliber 1065, 25 jewel, automatic, adjusted 5 positions and temperature. ....\$825.00

**62. ROLEX TWO-TONE WITH CHAMPAGNE DIAL C. 1970**

**Case:** No. 2,928,494, REF. 1601, near mint, oyster, stainless with smooth gold bezel, gold and steel jubilee band, 36mm.

**Dial:** Superb champagne-gold, white lettering, gold bar markers, gold batons.

**Movt:** Caliber 1570, 26 jewel, adjusted 5 positions and temperature. ....\$2,150.00

**63. ROLEX STEEL & GOLD SUBMARINER C. 1990**

**Case:** No. L747,704, REF. 16613, 40mm, sapphire crystal, 18K and stainless with oyster bracelet, mint condition, quick-set.

**Dial:** Superb, black with luminescent indexes, "skeleton" hands, gold sweep.

**Movt:** Caliber 3135, 31 jewel, adjusted 5 positions. ....\$4,050.00

**64. ROLEX SCARCE EARLY GMT MASTER C. 1984 R-4**

**Case:** No. 8,358,712, REF 16750, steel, near mint, 40mm, black bezel.

**Dial:** Black, superb with luminescent indexes and hands, red 24-hour hand.

**Movt:** Caliber 3075, 27 jewel, adjusted 5 positions, temperature, free sprung balance. ....\$5,550.00

**65. ROLEX STEEL & GOLD GMT MASTER C. 1990**

**Case:** No. E611486, REF. 16713 40mm, near mint with original oyster two-tone bracelet, black bezel, sapphire crystal.

**Dial:** Superb, white hour marks, gold and luminescent hands, quick-set date.

**Movt:** Caliber 3185, 31 jewels, adjusted 5 positions temperature.

This popular GMT Master comes with Rolex inner and outer boxes! .....\$4,250.00





#64  
Also Shown  
on Back  
Cover

## ASHLAND

---

### 66. ROLEX 18K GMT MASTER WITH BOX C. 1967 R-6

**Case:** No. 2,271,682, REF. 1675, 40mm, crown guard, bronze bezel, 18K original oyster bracelet, mint condition.

**Dial:** Brown, superb, gold lettering, gold and luminescent markers and hands.

**Movt:** Caliber 1560, 26 jewel, automatic adjusted 5 positions temperature. This rare REF. 1675 comes with inner and outer Rolex boxes. ....\$13,050.00

### 67. ROLEX BUBBLE BACK WRIST WATCH C. 1940s R-3

**Case:** Stainless, REF. 5050, 31mm, oyster, near mint condition.

**Dial:** Average, tapered golden hour markers, gold batons, blue sweep.

**Movt:** No. 91675, perpetual chronometer. ....\$2,250.00

### 68. ROLEX MINT TWO-TONE BUBBLE BACK C. 1940 R-4

**Case:** Case No. 381,616, REF. 3133, 31mm, mint, steel oyster with smooth gold, oyster crown.

**Dial:** Superb, luminescent Arabic numerals and batons, red sweep.

**Movt:** Perpetual chronometer, N20948. ....\$2,750.00

### 69. ROLEX EARLY WRIST WATCH C. 1930 R-3

**Case:** Original, excellent, stainless back, base metal top, 25 x 36mm, signed "Handley" inside back cover.

**Dial:** Silver with sunburst design, Arabic numerals, subsidiary seconds, blue batons, very fine.

**Movt:** Round, signed "Rolco 15 Jewels," 10 lignes. ....\$1,525.00

### 70. ROLEX TUDOR EARLY WRIST WATCH C. 1948 R-3

**Case:** 26 X 35mm, gold-filled, stainless back, near mint, 1948 date and name on back.

**Dial:** Very fine, signed "Rolex Tudor," gold batons and hour marks.

**Movt:** 10 ligne, 17 jewel, manual, signed "Tudor." ....\$825.00

### 71. ROLEX OYSTER PERPETUAL (BOMBE) WRIST WATCH C. 1950 R-3

**Case:** 18K, screw back, oyster case with screw down oyster crown, fancy fluted gold bezel, near mint condition, 35mm.

**Dial:** Very fine, silver with white tapered triangular hour markers, gold Dauphine hands, gold center sweep, black outer minute track.

**Movt:** Rolex perpetual, No. 19558, marked "Vis Tirette Screw Patented Self-Winder" on the center dome. A very collectible early Rolex oyster! ....\$2,850.00

### 72. ROLEX RARE PINK-GOLD CHRONOMETER WRIST WATCH C. 1950 R-3

**Case:** Mint condition, REF. 4238, 18K pink-gold, snap back, fancy flared lugs, 34mm, gold-filled Rolex buckle.

**Dial:** Rare, very fine, signed "Officially Certified Chronometer" above the seconds track, pink Roman numerals, pink leaf hands.

**Movt:** No. E45474, rare, 16 jewel, timed 6 positions, signed "Rolex Chronometer." ....\$3,050.00

### 73. ROLEX SUPER RED-GOLD WRIST WATCH C. 1940s R-3

**Case:** 14K red-gold, snap back, fancy lugs, reeded center, REF. 4035, 34mm.

**Dial:** Rose, very fine, Arabic numerals, subsidiary seconds, blue batons.

**Movt:** 17 Jewel, chronometer, adjusted 7 positions, No. 12312, manual wind. ....\$2,550.00

### 74. CARTIER AUTOMATIC SANTOS WRIST WATCH C. 1980s

**Case:** 18K steel and gold, classic Santos Model No. 296137528, 30mm with recessed crown ornamented with a sapphire, steel and gold screw accents. Cartier bracelet which is also presented with additional links, mint condition.

**Dial:** White, superb, signed "Cartier," black minute track, Roman chapters, blue batons, blue center sweep, date window at 3 o'clock position.

**Movt:** Cartier auto wind. ....\$2,050.00

### 75. AUDEMARS PIGUET CLASSIC LADY'S WRIST WATCH C. 1950 R-3

**Case:** Signed "Audemars Piguet," 18K, near mint, 17 x 27mm, No. 53865.

**Dial:** Silver, superb, signed, rose markers and batons.

**Movt:** Signed, 18 jewel, 8 adjustments, super high grade. ....\$1,525.00



**76. AUDEMARS PIGUET ULTRA-THIN GOLD WATCH. C. 1970 R-3**

**Case:** REF. 8506, 18K, mid size with 18K bracelet, approx. 6-3/4" long, near mint, 25mm.

**Dial:** Black, superb, white-gold bar markers and batons.

**Movt:** Ultra-thin (2mm), 17 jewel, adjusted heat cold 5 positions .....\$3,050.00

**77. AUDEMARS PIGUET GENT'S ULTRA-THIN WITH GOLD BRACELET C. 1970 R-3**

**Case:** 18K, REF. 6038, near mint, 32mm, 18K link bracelet, 6-3/4".

**Dial:** Superb, golden with black line hour marks, gold batons.

**Movt:** Ultra-thin, 9 douziene, 17 jewel, adjusted temperature & 4 positions. ....\$3,550.00

**78. AUDEMARS PIGUET AUTOMATIC C. 1970 R-3**

**Case:** 18K, near mint, REF. 81129, 33mm, name on back, 7-1/8" long. Audemars 18K bracelet (excellent condition).

**Dial:** Very fine, black batons and hour bars.

**Movt:** 36 Jewel, automatic, adjusted heat cold isochronism and 5 positions, Caliber 2120. ...\$3,550.00

**79. AUDEMARS PIGUET GENT'S CLASSIC WRIST WATCH C. 1955 R-4**

**Case:** 18K, mint, snap back, 31mm, interesting grooved bezel.

**Dial:** Silver, superb, gold batons and and hour bars, subsidiary seconds.

**Movt:** 18 Jewel, nickel bridge, adjusted temperature and 4 positions. ....\$2,850.00

**80. VACHERON & CONSTANTIN THIN WHITE-GOLD WATCH C. 1960s R-3**

**Case:** REF. 6335, No. 369824, ultra-thin around 33mm thick, 18K white-gold with wide brush finished bezel, recessed crown, 33mm, mint condition.

**Dial:** Very fine, silver, white-gold batons, black hour lines.

**Movt:** Caliber 1003, 17 jewel, adjusted heat cold 5 positions. ....\$3,050.00

**81. VACHERON & CONSTANTIN CENTER SECONDS WRIST WATCH C. 1955 R-3**

**Case:** REF. 6406, No. 402,307, 32mm, mint, 18K reeded bezel.

**Dial:** Very fine, champagne gold, gold bar markers, gold batons, center sweep.

**Movt:** No. 673376, Caliber 1002, 18 jewel, adjusted heat cold isochronism & 5 positions. ....\$2,850.00

**82. VACHERON & CONSTANTIN ROSE-GOLD WATCH WITH FANCY LUGS C. 1950 R-4**

**Case:** No. 343569, REF. 6031, 18K rose, very fancy deep curved lugs, 33 x 40mm, near mint.

**Dial:** Very fine, pink batons, center seconds, rose-gold numerals and markers.

**Movt:** Caliber 1002, 18 jewel, manual, adjusted heat cold & 5 positions. ....\$4,550.00

**83. VACHERON & CONSTANTIN EARLY WHITE-GOLD TANK C. 1930 R-4**

**Case:** 18K white-gold, No. 152822, marked "E. E. R." 23 x 31, near mint, monogram on back.

**Dial:** Superb, black minute track, white-gold Arabic numerals, kite-style hands.

**Movt:** No. 413126, 17 jewel, adjusted temperature & 3 positions, round 9 lignes. ....\$3,550.00



**84. PATEK PHILIPPE LADY'S GOLD BRACELET WATCH C. 1945 R-3**

**Case:** 18K, signed "Patek Philippe," REF. 1111, No. 699635, mint condition, round, 21mm with beautiful high quality flexible link yellow-gold bracelet with Patek Philippe emblem on the buckle, overall length approximately 6-3/4".

**Dial:** Silver, very fine with silver minute dots, yellow-gold hour markers, gold batons, dial signed "Patek Philippe Geneva."

**Movt:** Nickel bridge, 18 jewel, manual wind, signed "Patek Philippe & Co." Adjusted heat cold 5 positions, No. 857464. Very sharp! .....\$3,550.00

**85. PATEK PHILIPPE DIAMOND & GOLD BRACELET WATCH C. 1940s R-4**

**Case:** 18K yellow-gold with original Patek Philippe 18K band, 6-1/4", 9 diamonds TW approx. .60 Ct., mint condition, 15 x 33mm, No. 42077.

**Dial:** Silver, superb, gold dots and black line markers, gold batons.

**Movt:** No. 840597, 18 jewel, manual wind. ....\$5,550.00

**86. PATEK PHILIPPE PLATINUM & DIAMOND WATCH C. 1920 R-5**

**Case:** Platinum, hinged back, 14 x 45mm, engraved sides and back, diamond bezel T. W. approx. 1.10 Ct., near mint.

**Dial:** Very fine, signed "Patek Philippe & Co." black minute track, black Arabic numerals, blue spade hands.

**Movt:** No. 820,221, 18 jewel, 3 adjustments, nickel, rectangular. Rare! .....\$7,550.00

**87. PATEK PHILIPPE GENT'S WRIST WATCH C. 1973 R-3**

**Case:** Classic elliptical-style case, 18K yellow-gold, light monogram and date of 1973 engraved on the back, case measures 27 x 35mm.

**Dial:** Very fine, silver with black Roman chapters, signed "Patek Philippe Geneva," black batons.

**Movt:** Patek, nickel bridge, 18 jewel, manual wind. ....\$3,850.00

**88. PATEK GENT'S SQUARE WRIST WATCH C. 1965 R-4**

**Case:** REF. 3490, No. 2,633,567, 18K, snap back, 26 x 34mm, recessed crown, near mint.

**Dial:** White with gold bar markers and batons, very fine.

**Movt:** 18 Jewel, No. 1,130,529, Caliber 175, 18 jewel, adjusted heat cold 5 positions, Gyromax balance. ....\$5,050.00

**89. PATEK PHILIPPE-TIFFANY RARE ROSE-GOLD WRIST WATCH C. 1940s R-5**

**Case:** 30mm, ultra-rare, 18K deep rose-gold, No. 638069, signed "Patek Philippe & Co." Fancy curved tear drop form lugs, mint condition, Spanish inscription on the back cover.

**Dial:** Arabic chapters and circular hour marks, black outer minute track.

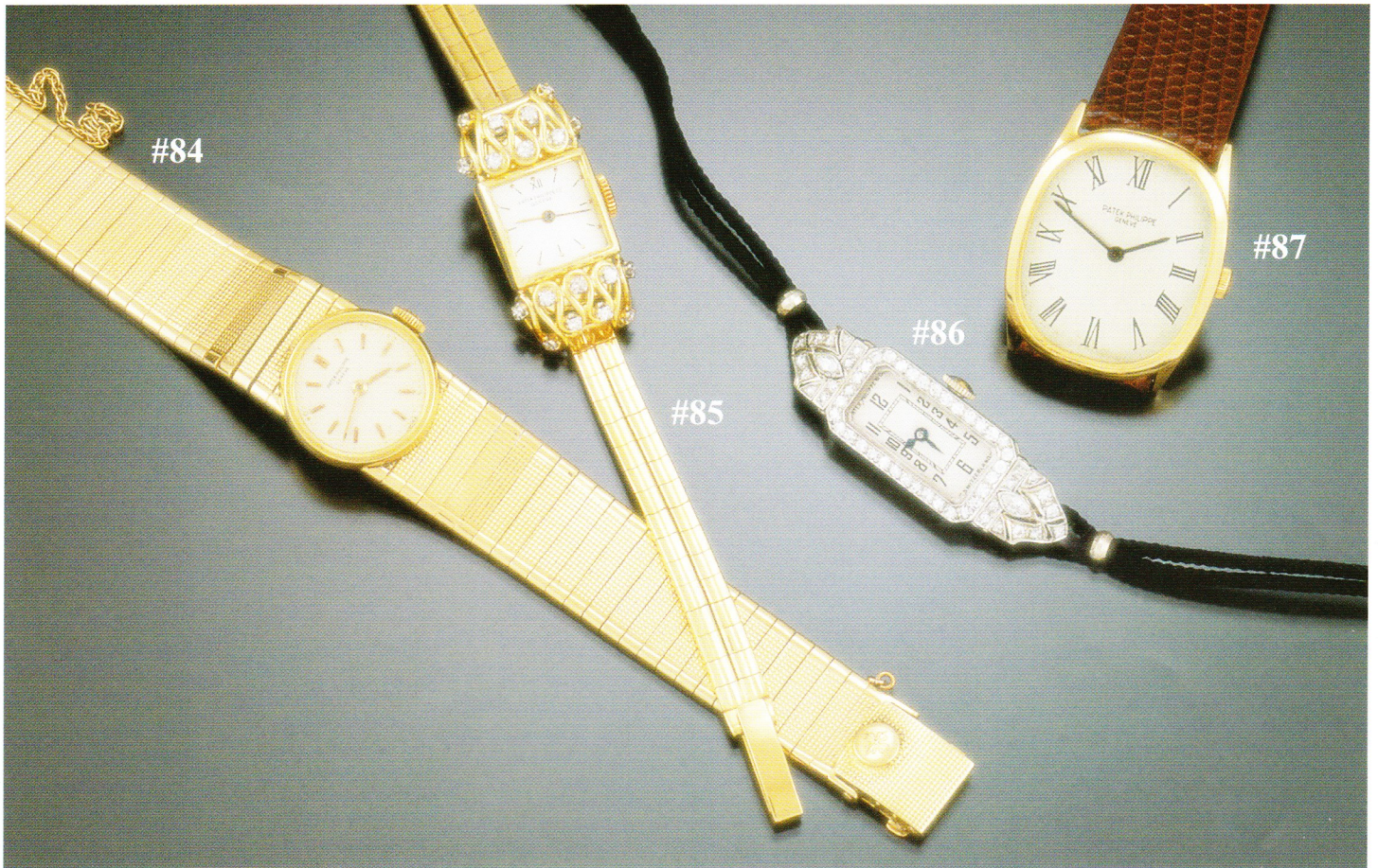
**Movt:** Nickel bridge model, No. 901807, 18 jewel, manual wind, adjusted 5 positions heat and cold, straight line damaskeening. A rare rose-gold early Patek! .....\$7,050.00

**90. PATEK PHILIPPE GOLD ELLIPSE WITH BRACELET C. 1970s R-4**

**Case:** REF. 3598, No. 528,953, 18K, 30 x 34mm, 1977 inscription on back, near mint. Heavy original Patek 18K fancy bracelet, approx. 6-3/4" long.

**Dial:** Superb, fancy textured pattern at center, gold bar hour markers, luminescent hands.

**Movt:** No. 1,268,503, 18 jewel adjusted heat cold 5 positions. ....\$5,050.00





**ASHLAND**  
 continues to be a  
 major buyer...

in the field of horology and vertu with extreme purchasing power. Please give ASHLAND the opportunity to make an offer on your valued collection when the time comes to liquidate your investment.

# Grand Opening

\* Informative Articles

\* Market Updates

\* Calendar of Events

\* Appraisals

\* Authentication Service

\* And Much More...

\* Pocket Watch Sales

\* Wristwatch Sales

\* Jewelry Sales

\* Auctions

\* Accessories

\* Ephemera

**eAshland.net**  
 Watch Collector's Network

**Coming in the Spring of 2007**